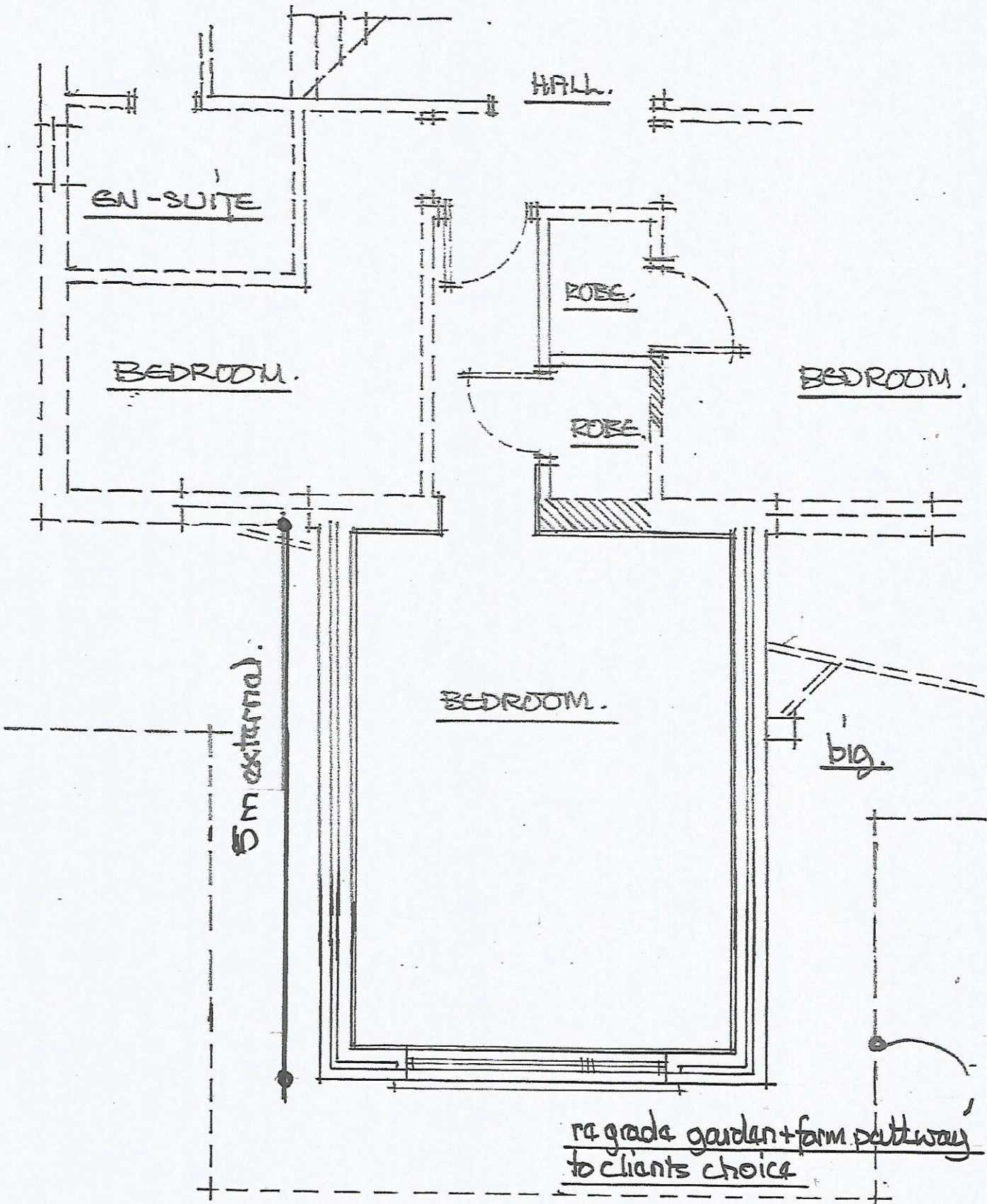


PROPOSED GROUND FLOOR LAYOUT (PART) @ 1:50M.



TRIGONAL CHECK :- floor area created $4.70 \times 3.55 = 16.69 \text{ m}^2 \therefore 25\% \text{ allowance } 4.17 \text{ m}^2$
area covered = $1.35 \times 1.20 = 1.62 \therefore \text{allowed} = 4.17 + 1.62 = 5.79 \text{ m}^2$
proposed = $2.40 \times 1.20 = 2.88 \text{ m}^2 \therefore \text{glazing acceptable.}$