

6 Socio-Economics and Health

6.1 Introduction

6.1.1 This chapter determines the baseline socio-economic conditions and considers the likely socio-economic effects of the Proposed Development. The considerations of this chapter are mostly related to the effects of the Proposed Development on the human population who will live in the vicinity of the Proposed Development site.

6.1.2 This assessment is made by studying the potential effects arising from the Proposed Development and assessing the impact this could have on relevant economic and social baseline, services and facilities. It identifies the socio-economic baseline in relation to key economic and social variables. It then examines the potential effects that could occur, both direct and indirect, resulting from the Proposed Development during construction (temporary effects) and operation (permanent effects).

6.1.3 This assessment has been prepared by Richard Cook, Senior Director within the Economics Services team at Pegasus Group, and member of Institute of Economic Development (IED).

6.2 Assessment Approach

Methodology

6.2.1 There is no specific guidance available which establishes a methodology for undertaking socio-economic effects of a Proposed Development in the context of an EIA. Accordingly, the approach adopted for this assessment is based on professional experience and best practice, and in consideration of the policy requirements/tests set out within the National Planning Policy Framework (NPPF), and the development plan framework.

6.2.2 The range of data sources used in the assessment include, but are not limited to:

- Census data (Census 2021, where available and applicable, otherwise Census 2011).
- Indices of Multiple Deprivation 2019 (IMD 2019).
- Annual Population Services.
- Office for National Statistics.
- Public health England.

Scenarios

6.2.3 A number of scenarios have been tested and assessed within the context of the socio-economic and health ES chapter. The scenarios and the reason for their inclusion are presented in Table 6.1.

Table 6.1: Scenarios to be assessed

Scenario no.	Scenario title	Justification for inclusion
1	Business As Usual (BAU)	<p>This aligns with Option 1 'Do Nothing' outlined in the Outline Business Case in which it is expected that there would be investment to maintain the existing facilities in their current condition. This includes minimum works to the listed Library building which also houses the current Gallery and Queensgate market. This scenario ultimately presents the worst case option in respect of socio-economic and health effects.</p> <p>The Outline Business Case produced for the Proposed Development estimates that the total investment for this option will be £30.7 million. For the purpose of this assessment, a construction cost of £14.9 million has been used, based on calculations by IPW..., and includes the cost of construction and makes allowance for contingencies and risk.</p>
2	Preferred Way Forward (PWF)	<p>This aligns with Option 3 'Preferred Way Forward' outlined in the Outline Business Case which involves the construction of a new Venue and Food Hall. There will be a new Library partly integrated into the Queensgate market combined with a new separate Gallery. The current Library will be refurbished to incorporate a new Museum.</p> <p>The Outline Business Case produced for the Proposed Development estimates that the total investment for this option will be £210 million. For the purpose of this assessment, a construction cost of £146.4 million has been used, based on calculations set out within the Outline Business Case, and includes the cost of construction and makes allowance for contingencies and risk.</p>

6.2.4 Effects for both scenarios are presented in Section 6.4 Assessment of Likely Significant Effects.

Assessment Criteria

6.2.5 The first step in the assessment is to identify the sensitivity of the receptors. In socio-economic assessments, receptors are not sensitive to changing environmental conditions in the same way as many environmental receptors are. To address this, the assessment draws on a combination of measurable indicators and a consideration of the importance of the receptor in policy terms to gauge the receptor’s sensitivity. For example, the number of jobs in the area may increase as new developments are completed and occupied by businesses. This is considered alongside the weight attached to these issues in local policy. For example, the Local Plan may identify that employment and business growth is a particular priority. **Table 6.2** shows the sensitivity criteria followed in this assessment.

Table 6.2: Sensitivity Criteria

Sensitivity	Evidence for Sensitivity Assessment
High	<p>Evidence of direct and significant socio-economic challenges relating to receptor. Accorded a high priority in local, regional or national economic regeneration policy.</p> <p>Evidence of direct and significant socio-economic challenges including:</p> <ul style="list-style-type: none"> • Areas with levels of unemployment well in excess of / below regional / national averages and high levels of relative deprivation (i.e. top 10%). • Areas with claimant count well in excess of / below regional / national averages. • Areas with economic activity rate well in excess of / below regional / national averages. • Areas with levels of crime well in excess of / below regional / national averages. • Areas with life expectancy far lower than / above the regional / national averages. • Areas with identified health inequalities well in excess of / below the regional / national averages, such as in respect of obesity and heart disease in the case of adults, and childhood obesity. • Areas with physical activity levels well below the regional / national averages, in respect of adults or children, or both, as applicable. • Areas with mental health indicators well in excess of / below regional / national averages.
Medium	<p>Some evidence of socio-economic challenges linked to receptor, which may be indirect. Change relating to receptor has medium priority in local, regional and national economic and regeneration policy.</p> <p>Some evidence of socio-economic challenges, including:</p> <ul style="list-style-type: none"> • Areas with levels of unemployment above / below regional / national averages and levels of relative deprivation (i.e. top 50%). • Areas with claimant count well above / below regional / national averages. • Areas with economic activity rate above / below

Sensitivity	Evidence for Sensitivity Assessment
	<p>regional / national averages.</p> <ul style="list-style-type: none"> • Areas with levels of crime above / below regional / national averages. • Areas with life expectancy below / above the regional / national averages. • Areas with identified health inequalities above / below the regional / national averages, such as in respect of obesity and heart disease in the case of adults, and childhood obesity. • Areas with physical activity levels below the regional / national averages, in respect of adults or children, or both, as applicable. • Areas with mental health indicators above / below regional / national averages.
Low	<p>Little evidence of socio-economic challenges relating to receptor. Receptor is accorded a low priority in local, regional and national economic and regeneration policy.</p> <p>Little evidence of socio-economic challenges, including:</p> <ul style="list-style-type: none"> • Areas with levels of unemployment in line with regional / national averages and levels of relative deprivation (i.e. bottom 50%). • Areas with claimant count in line with regional / national averages. • Areas with economic activity rate in line with regional / national averages. • Areas with levels of crime in line with regional / national averages. • Areas with life expectancy in line with regional / national averages. • Areas with identified health inequalities in line with the regional / national averages, such as in respect of obesity and heart disease in the case of adults, and childhood obesity. • Areas with physical activity levels in line with the regional / national averages, in respect of adults or children, or both, as applicable. • Areas with mental health indicators in line with regional / national averages.
Negligible	<p>No socio-economic issues relating to receptor. Receptor is not considered a priority in local, regional and national economic development and regeneration policy.</p> <p>No socio-economic issues relating to a receptor, including:</p> <ul style="list-style-type: none"> • Areas with levels of unemployment less than regional / national averages and low levels of relative deprivation (i.e. bottom 10%). • Areas with claimant count higher than average regional / national averages. • Areas with economic activity rate higher than average regional / national averages. • Areas with minimal issues in respect of crime.

Sensitivity	Evidence for Sensitivity Assessment
	<ul style="list-style-type: none"> • Areas with higher than average life expectancy compared with regional / national averages. • Areas with better than average health indicators compared with the regional / national averages, such as in respect of obesity and heart disease in the case of adults, and childhood obesity. • Areas with physical activity levels above the regional / national averages, in respect of adults or children, or both, as applicable. • Areas with mental health indicators above regional / national averages.

6.2.6 The magnitude of change upon each receptor has been determined by considering the predicted deviation from baseline conditions, both before and, if required, after mitigation. The criteria used for the assessment of magnitude of change, which can be either positive (beneficial) or negative (adverse) are shown in **Table 6.3**.

Table 6.3: Magnitude of Change Criteria

Magnitude of Impact	Description / Criteria
High	<p>Proposed Development would cause a large change to existing socio-economic conditions in terms of absolute and/or percentage change.</p> <ul style="list-style-type: none"> • Greater than 5% increase / decrease on existing baseline levels of employment. • Greater than 5% increase / decrease in GVA from baseline. • Considerable increase in the likely eventuality of crime due to design / intended use of the proposals. • Considerable increase / decrease in opportunities to exercise or involvement in leisure activities (impact on physical and mental wellbeing).
Medium	<p>Proposed Development would cause a moderate change to existing socio-economic conditions in terms of absolute and/or percentage change.</p> <ul style="list-style-type: none"> • 1% - 5% increase / decrease on existing baseline levels of employment. • 1% - 5% increase / decrease in GVA from baseline. • Moderate increase / decrease in the likely eventuality of crime due to design / intended use of the proposals. • Moderate increase / decrease in opportunities to exercise or involvement in leisure activities (impact on physical and mental wellbeing).
Low	<p>Proposed Development would cause a minor change to existing socio-economic conditions in terms of absolute and/or percentage change.</p> <ul style="list-style-type: none"> • Limited increase / decrease on existing baseline levels of 0.1% - 0.99% increase / decrease on existing baseline levels of employment. • 0.1% - 0.99% increase / decrease in GVA from baseline. • Limited increase / decrease in the likely eventuality of

Magnitude of Impact	Description / Criteria
	crime due to design / intended use of the proposals. • Limited increase / decrease in opportunities to exercise or involvement in leisure activities (impact on physical and mental health).
Negligible	No discernible change in baseline socio-economic conditions.

6.2.7 In reporting the effects of significance resulting from the Proposed Development, at construction and operational stages, the assessment contextualises both the sensitivity of the receptor and the magnitude of change. The method uses the matrix shown in Table 6.4.

Table 6.4: Significance of Effect Matrix

		Sensitivity of Receptor			
		High	Medium	Low	Negligible
Magnitude of Change	High	Major	Major	Moderate	Negligible
	Medium	Major	Moderate	Minor	Negligible
	Low	Moderate	Minor	Minor	Negligible
	Negligible	Negligible	Negligible	Negligible	Negligible
	Negligible	Negligible	Negligible	Negligible	Negligible

6.2.8 Using this scale, effects identified as major or moderate are regarded as being significant in EIA terms. Effects of minor or lesser significance are also identified but regarded as not significant.

Scoping and Consultation Responses

6.2.9 A request for a Scoping Opinion was submitted to Kirklees Council in June 2022. Within that, Socio-Economics and Health were proposed to be scoped into the EIA. At the time of writing a formal Scoping Opinion had not been received from Kirklees Council.

6.2.10 The potential effects assessed within this chapter are as follows:

- Demolition and Construction:
 - Employment – direct, indirect and induced jobs based in the local and wider impact areas, growing employment levels in their respective economies.
 - Economic output – measured in gross value added (GVA, generated by the employment supported during the construction process.
 - Amenity impacts – potential impacts on health and wellbeing as a result of air quality, noise and neighbourhood amenity during the construction phase.

- Operation:
 - Employment – direct, indirect and induced jobs based in the local and wider impact areas, growing employment levels in their respective economies.
 - Economic output – measured in gross value added (GVA, generated by the employment supported once operational.
 - Health and well-being – considering the impact of the proposals on the potential change in overall health and well-being of future users including but not limited to consideration of community safety and access to amenity and activities which have potential to change baseline physical and mental health.

6.2.11 The assessment is informed by a Health Impact Assessment (HIA) which is appended to the chapter (**Appendix 6.1**). The HIA is aligned with the expectations presented in Kirklees Council Rapid Health Impact Assessment (HIA) for Spatial Planning Guidance Notes¹, as well as with relevant NPPF and Local Plan policies.

Limitations to the Assessment

6.2.12 Baseline information is derived from the latest available statistics, however, there is often a time-lag associated with the publication of this data. As such, a process of triangulation is utilized wherever possible and relevant whereby baseline data is collated and presented from a range of sources to ensure that as full and up to date picture as possible is presented.

6.2.13 The study area and build programme considered in respect of the cumulative effects are assumed to be the same as those considered in the assessment of the Proposed Development in isolation to enable a worse case assessment.

6.2.14 No additional residents would be generated by the Proposed Development and, as such, there would not be expected to be a change in demand on social infrastructure, for example, education and healthcare facilities. Therefore, this issue is scoped out of the assessment.

6.3 Baseline Conditions

6.3.1 The baseline looks at two different spatial scales: Kirklees and Huddersfield Town Centre:

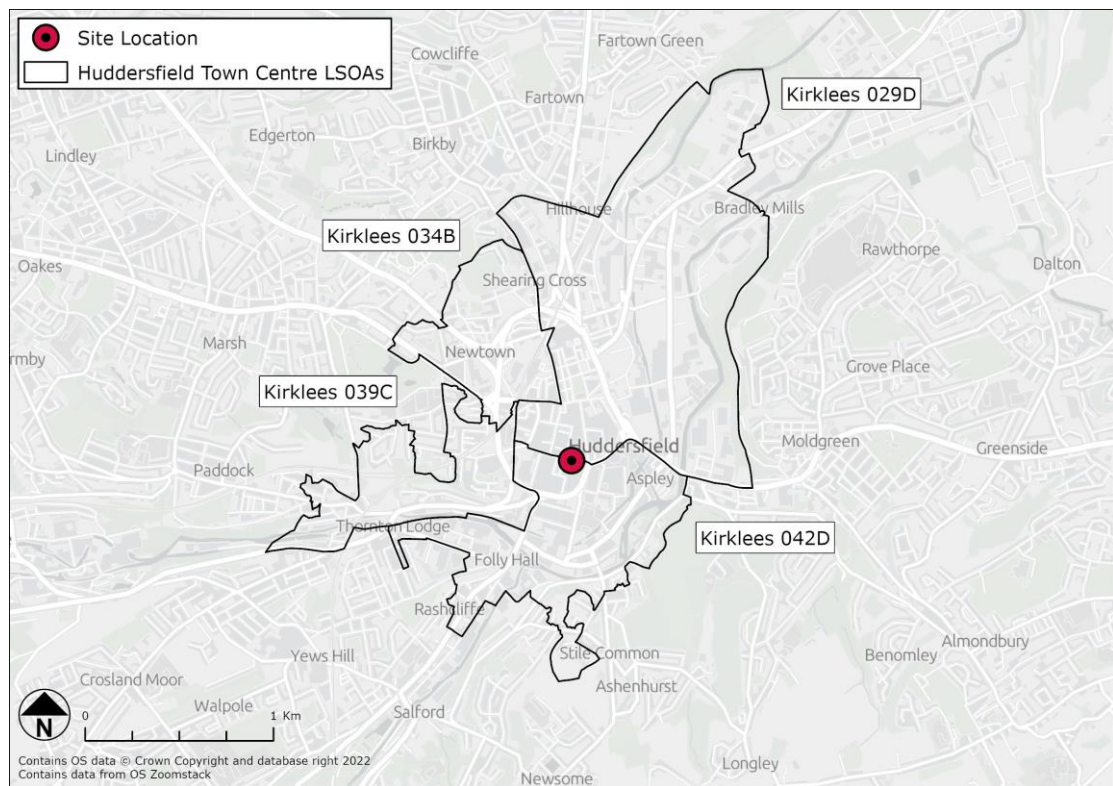
- Kirklees includes the areas of Huddersfield, the Holme Valley, the Colne Valley, the Dearne Valley and North Kirklees (Dewsbury, Batley and Spen Valley), and is essentially the District in which the Site is located.
- Huddersfield Town Centre focuses on the immediate surrounding area of the Proposed Development and is a 'best fit' for the town centre of Huddersfield.

6.3.2 Figure 6.1 shows the Lower Super Output Areas (LSOAs) that have been used to represent Huddersfield Town Centre. Four LSOAs are utilized, namely Kirklees O29D, Kirklees O42D,

¹ *Kirklees Council Rapid Health Impact Assessment (HIA) for spatial planning Guidance Notes*: Kirklees Council, November 2020.

Kirklees O39C and Kirklees O34B. The Site falls roughly in the centre of this area, located across the boundaries of two of the LSOAs, specifically Kirklees O29D and Kirklees O42D.

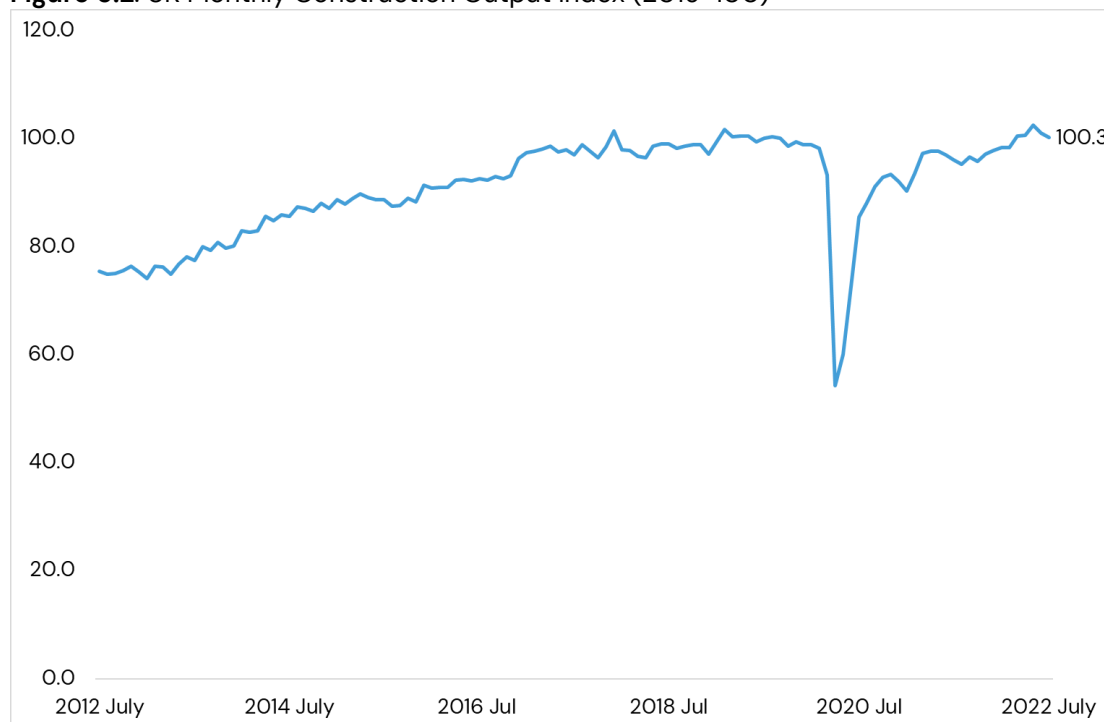
Figure 6.1: Huddersfield Town Centre and Site Location



Construction

6.3.3 The construction industry was severely affected by the pandemic with a sharp decline in construction activity in April 2020 following lockdown restrictions. Construction output decreased by 0.8 percentage points between June 2022 and July 2022.(see Figure 6.2).

Figure 6.2: UK Monthly Construction Output Index (2019=100)

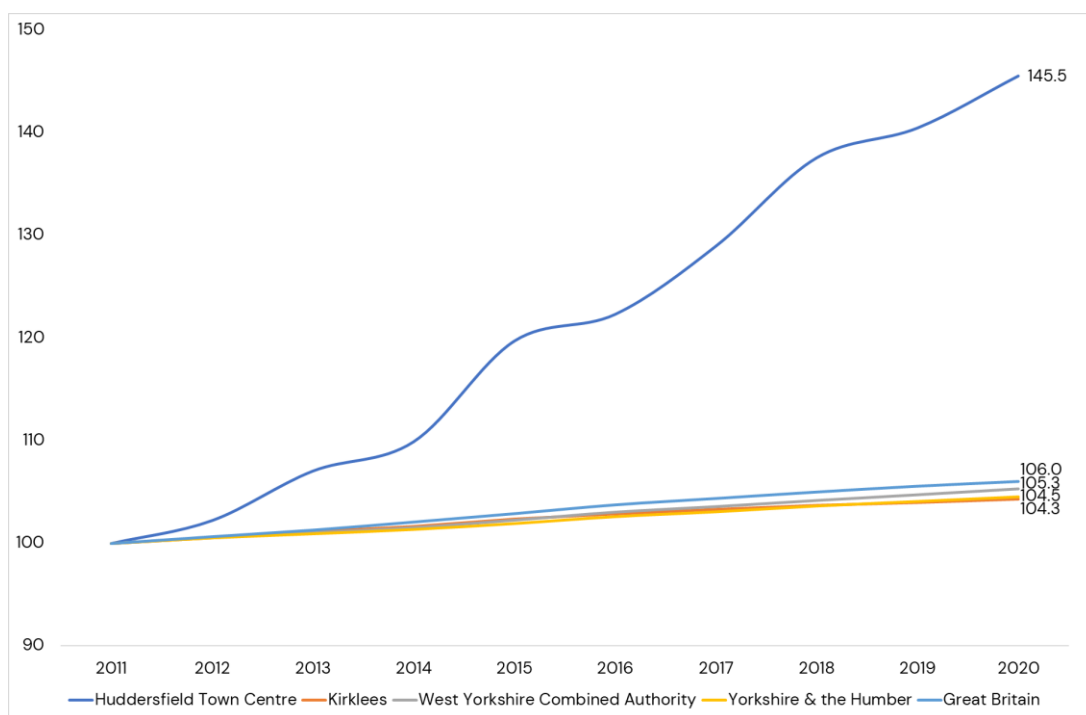


Source: ONS

Population

6.3.4 Based on ONS data, the population of Huddersfield Town Centre increased by 45.5% between 2011 and 2020, an absolute increase of 3,768 people. This compares to growth of 4.3% in Kirklees, 5.3% in West Yorkshire Combined Authority, 4.5% in Yorkshire and the Humber and 6% in Great Britain. Figure 6.3 shows the population changes in more detail.

Figure 6.3: Population Change, 2011-20 (2011=100)



Source: ONS, Population Estimates

- 6.3.5 The fastest growing age group in Huddersfield Town Centre between 2011 and 2020 were those aged 16–64 which increased by 55.3% (3,637). Of this, 51% (1,919) of the increase was a result of people aged 18–25. Based on data from the Higher Education Statistics Authority (HESA), as of the academic year 2020/21 there were 20,610 students at the University of Huddersfield. This represents an increase of almost 1,000 students since 2014/15. It is reasonable to assume that the increase in the younger population in Huddersfield Town Centre could, at least in part, be a result of the increase in the number of students studying and staying in Huddersfield. The number of people aged 0–15 in the Town Centre grew by 16.3% (169), whereas those aged 65 and over fell by 5.7% (38). In all other comparator areas, those aged 65 and over were the fastest growing age group with a rise of 22.1% in Kirklees, 17.7% in West Yorkshire Combined Authority, 18.3% in Yorkshire and the Humber and 19.6% in Great Britain.
- 6.3.6 Tables 6.5–6.8 show the population projections in Kirklees, West Yorkshire Combined Authority, Yorkshire and the Humber and England². It is projected that the fastest growing age group in all areas were those aged 65 and over with a growth of 36.6% in Kirklees, 35.1% in West Yorkshire Combined, 36.3% in Yorkshire and the Humber and 40.8% in England. The number of people aged 0–15 declined in all areas with a fall of 6.8% in Kirklees. Kirklees also saw a decline of 0.6% in people aged 16–64.

Table 6.5: Population Projections in Kirklees, 2018–38

	2018	2038	Absolute Change	% Change
0–15	89,819	83,742	-6,077	-6.8%
16–64	272,060	270,465	-1,595	-0.6%
65+	76,848	104,995	28,147	36.6%
Total	438,727	459,204	20,477	4.7%

Source: ONS, Population Projections

Table 6.6: Population Projections in West Yorkshire Combined Authority, 2018–38

	2018	2038	Absolute Change	% Change
0–15	476,813	464,777	-12,036	-2.5%
16–64	1,460,576	1,493,893	33,317	2.3%
65+	382,825	517,194	134,369	35.1%
Total	2,320,214	2,475,866	155,652	6.7%

Source: ONS, Population Projections

Table 6.7: Population Projections in Yorkshire and the Humber, 2018–38

	2018	2038	Absolute Change	% Change
0–15	1,046,381	1,002,967	-43,414	-4.1%
16–64	3,416,898	3,431,682	14,784	0.4%
65+	1,016,336	1,384,927	368,591	36.3%
Total	5,479,615	5,819,573	339,958	6.2%

Source: ONS, Population Projections

² Data at the LSOA spatial scale is not available in respect of population projections and therefore it is not possible to present projections for Huddersfield Town Centre.

Table 6.8: Population Projections in England, 2018–38

	2018	2038	Absolute Change	% Change
0–15	10,748,458	10,370,237	-378,221	-3.5%
16–64	35,049,467	36,066,076	1,016,609	2.9%
65+	10,179,253	14,329,964	4,150,711	40.8%
Total	55,977,178	60,766,251	4,789,073	8.6%

Source: ONS, Population Projections

Deprivation

- 6.3.7 The 2019 Index of Multiple Deprivation provides an indication of the average levels of deprivation for Lower Layer Super Output Areas (LSOAs) across England. The index provides an overall assessment of the average levels of deprivation as well as an assessment against domains of deprivation. In total, England has 32,844 LSOAs, 258 of which fall within Kirklees.
- 6.3.8 The scheme falls within two LSOAs, these are Kirklees O29D, which has an overall rank of 2,928, putting it in the top 10% most deprived LSOAs in England and Kirklees O42D, which has an overall rank of 9,558, putting it in the top 30% most deprived LSOAs in England. When looking at individual domains of deprivation, Kirklees O29D has its highest rank in the crime domain with a rank of 2,488, putting it in the top 10% most deprived for this domain. Its lowest rank is in health where it ranks 6,409, however this is still in the top 20% most deprived LSOAs for this domain. Kirklees O42D has its highest rank in living environment where it ranks 1,300, putting it in the top 10% most deprived LSOAs for this domain and it has its lowest rank in employment, with a rank of 19,370, putting it in the top 50% least deprived LSOAs for this domain.
- 6.3.9 The full list of the domain rankings for Kirklees O29D and Kirklees O42D are set out in Tables 6.9 and 6.10 respectively below. The lower the number the more deprived the area is relative to other LSOAs nationally.

Table 6.9: Kirklees O29D IMD 2019 Domain Rankings

IMD 2019 Domain	Kirklees O29D Rank (out of 32,844, 1 being the most deprived)
Overall IMD	2,928
Income	3,753
Employment	4,566
Education & Training	5,096
Health	6,409
Crime	2,488
Barriers to Housing and Services	3,677
Living Environment	2,923

Source: Ministry for Housing, Communities & Local Government

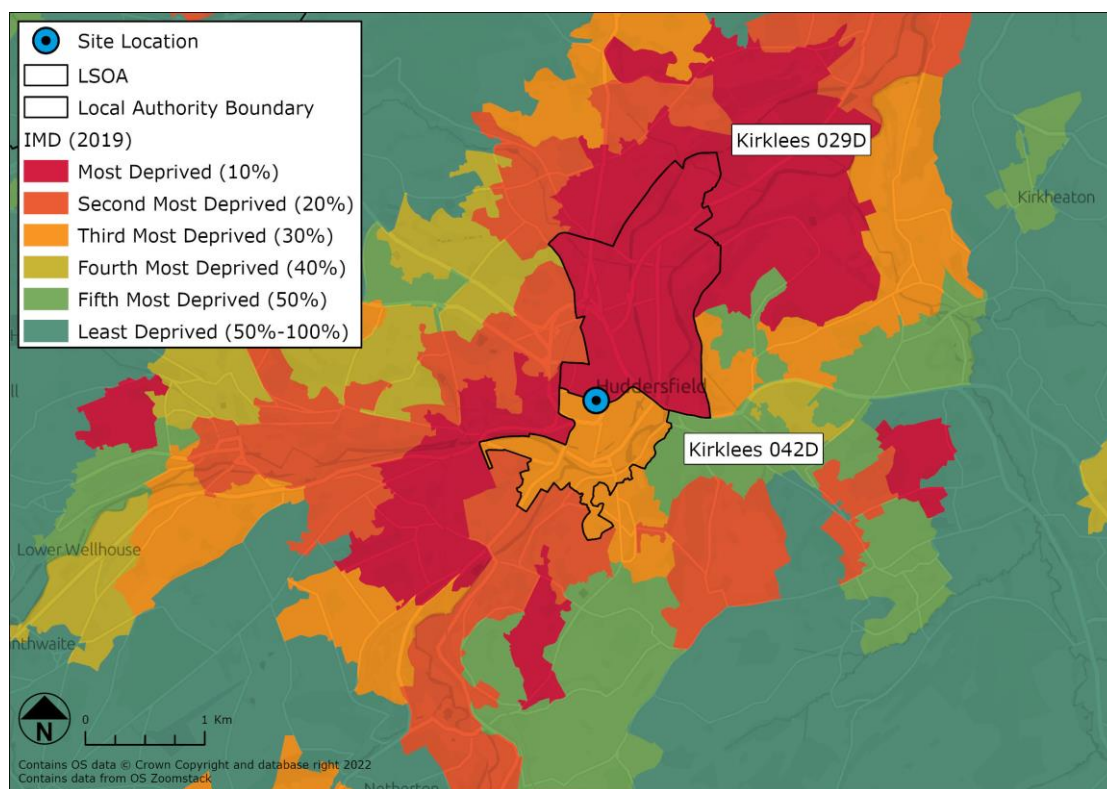
Table 6.10: Kirklees O42D IMD 2019 Domain Rankings

IMD 2019 Domain	Kirklees O42D Rank (out of 32,844, 1 being the most deprived)
Overall IMD	9,558
Income	17,587
Employment	19,370
Education & Training	10,382
Health	3,957
Crime	10,920
Barriers to Housing and Services	8,639
Living Environment	1,300

Source: Ministry for Housing, Communities & Local Government

6.3.10 Figure 6.4 shows the overall IMD rank for the site location, Kirklees O29D and Kirklees O42D. There are large areas of deprivation close to the site, with many of the LSOAs directly next Kirklees O29D and O42D and within Huddersfield Town Centre fall into the top 10% and top 20% most deprived LSOAs in England. Further out from the town centre, the levels of deprivation decline, with some LSOAs falling into the top 50% least deprived LSOAs in England.

Figure 6.4: Index of Multiple Deprivation for Site Location



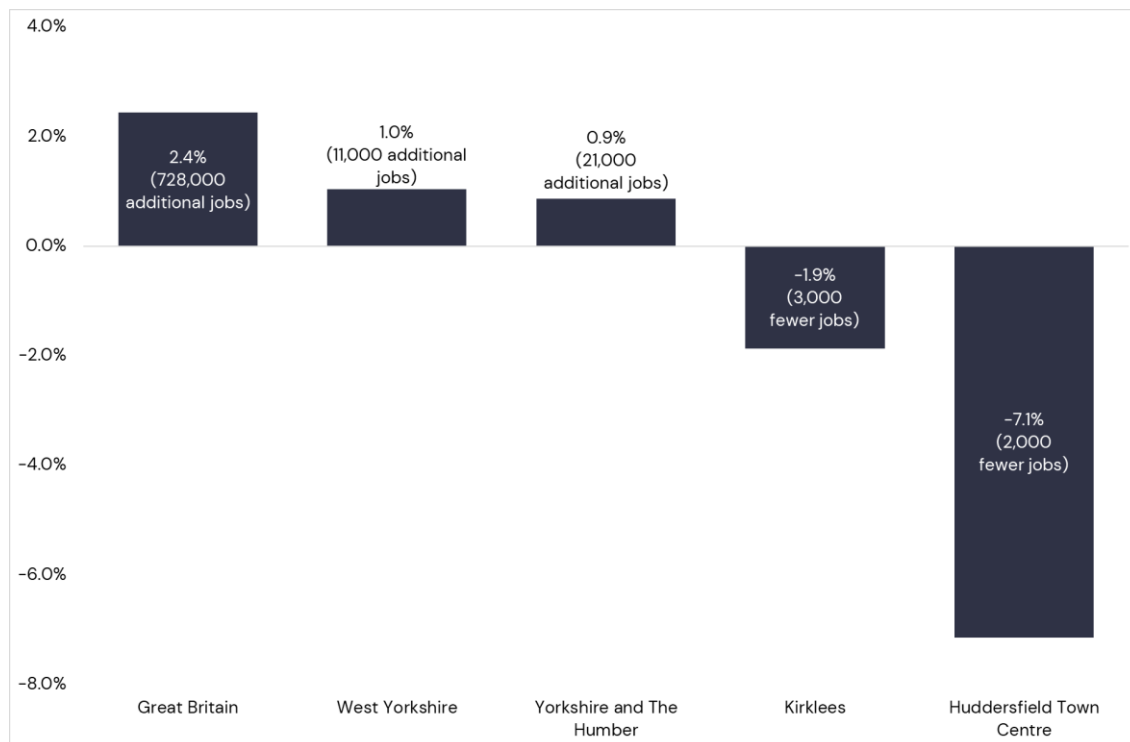
Source: Ministry for Housing, Communities and Local Government

Employment

6.3.11 Based on the most recent data from the Business Register & Employment Survey (BRES) published by ONS, in 2020 around 158,000 people worked in Kirklees (including the self-employed), of which 26,000 people work in Huddersfield Town Centre.

6.3.12 Between 2015 and 2020, both Huddersfield Town Centre and Kirklees LPA both experienced an employment decline of 7.1% (2,000 fewer jobs – see Figure 6.5) and 1.9% (3,000 fewer jobs). This compares to jobs growth of 1% (11,000 additional jobs) in West Yorkshire, 0.9% (21,000 additional jobs) in Yorkshire and the Humber and 2.4% (728,000 additional jobs) in Great Britain. Figure 6.4 shows the data in more detail.

Figure 6.5: Employment Change, 2015–20

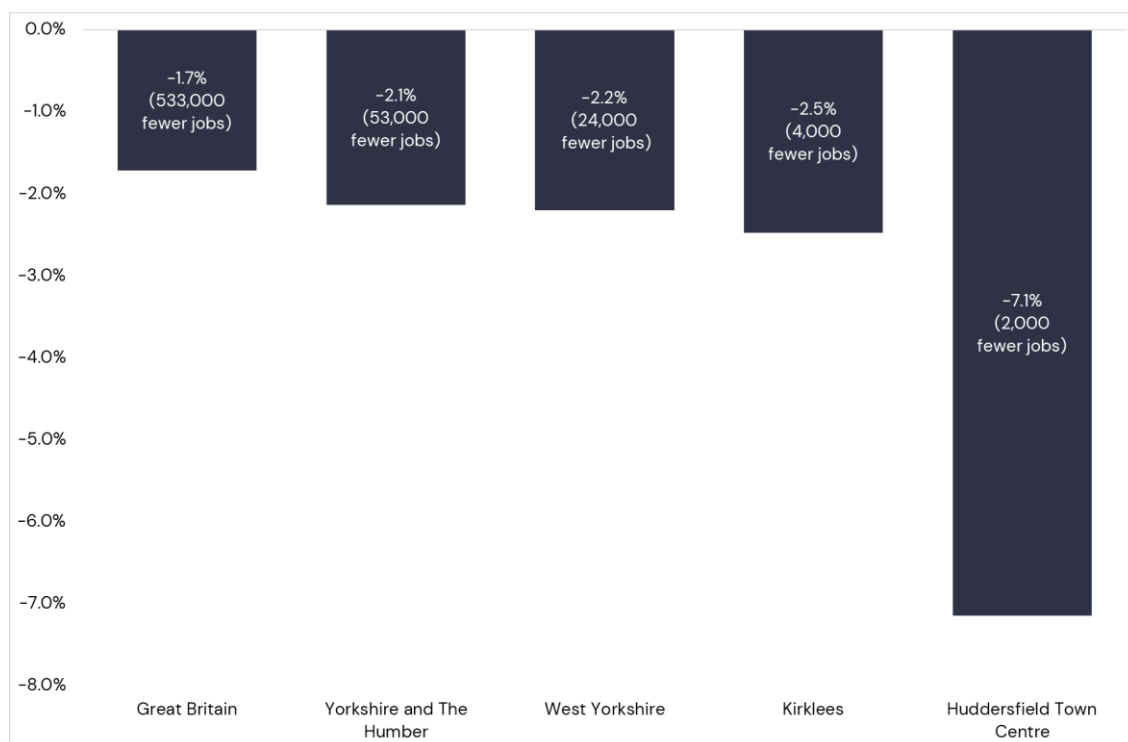


Source: ONS, Business Register & Employment Survey

6.3.13 Figure 6.6 shows the employment change in Huddersfield Town Centre, Kirklees and comparator areas for 2019–2020, reflecting the impact of the Covid-19 pandemic on the labour market. Between 2015 and 2019, employment in Kirklees and in Huddersfield Town Centre remained at a similar level, however, the impact of the Covid-19 pandemic resulted in jobs declining in both Kirklees and Huddersfield Town Centre. The largest decline was seen in Huddersfield Town Centre, where jobs fell by 7.1% (2,000 fewer jobs). This compares to a fall of 2.5% (4,000 fewer jobs) in Kirklees, 2.2% (24,000 fewer jobs) in West Yorkshire, 2.1% (53,000 fewer jobs) in Yorkshire and the Humber and 1.7% (533,000 jobs) in Great Britain.

6.3.14 The sector most likely to benefit during the build phase of the Proposed Development is the construction sector which accounts for 5.7% of total employment in Kirklees and supported around 9,000 jobs in 2020.

Figure 6.6: Employment Change, 2019–20



Source: ONS, Business Register & Employment Survey

Business Base

6.3.15 In Kirklees, 17,930 businesses are recorded as of 2021, compared to 13,860 in 2011. This is an increase of 4,070 which equates to a rise of 29.4%. This growth rate was below the rate seen across West Yorkshire (30.6%), however it was above the rate for Yorkshire and The Humber (23.6%) and Great Britain (27%). Table 6.11 presents the data in more detail.

6.3.16 Of these 17,930 businesses in Kirklees, 25% (4,500) are businesses in the retail, accommodation and food services and the arts, entertainment and recreation sectors which are the sectors most likely to be supported by the Proposed Development. Businesses in all sectors grew between 2011 and 2021, with an overall increase of 23.8% (865).

Table 6.11: Change in Business Number, 2011–2021

	2011	2021	Absolute Change	% Change
Kirklees	13,860	17,930	4,070	29.4%
West Yorkshire	73,100	95,490	22,390	30.6%
Yorkshire & The Humber	184,470	227,970	43,500	23.6%
Great Britain	2,464,265	3,130,100	665,835	27.0%

Source: ONS UK Business Count

6.3.17 Of these 17,930 businesses around 84.3% are micro businesses (employing 0–9 people); 12.8% are small (10–49 employees); 2.6% are medium (50–249 employees); and only 0.3% are large (250+ employees). These figures are similarly aligned to the proportions in West Yorkshire, Yorkshire & The Humber, Great Britain. Table 6.12 presents business share by size data in more detail.

Table 6.12: Business Share by Size, 2021

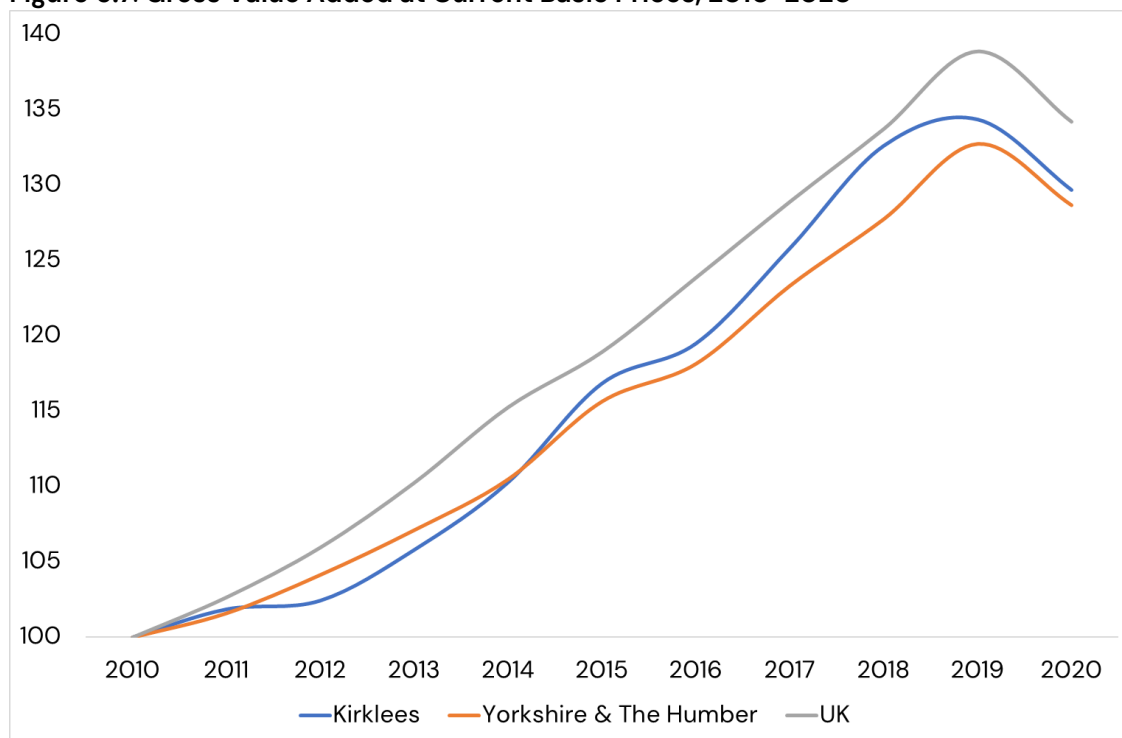
	Micro (0 to 9)	Small (10 to 49)	Medium-Sized (50 to 249)	Large (250+)
Kirklees	84.3%	12.8%	2.6%	0.3%
West Yorkshire	82.9%	13.5%	3.1%	0.5%
Yorkshire & The Humber	83.0%	13.6%	2.9%	0.4%
Great Britain	84.8%	12.3%	2.5%	0.4%

Source: ONS, UK Business Count

Economic Output

6.3.18 Figure 6.7 shows the GVA for Kirklees, Yorkshire & The Humber, and The United Kingdom between 2010 and 2020. In this time, GVA for Kirklees increased by 29.7% (approximate increase of £7.4bn). This was just above the rate for Yorkshire & The Humber, which saw GVA rise by 28.7%, but below the rate for the UK, which saw GVA rise by 34.2%. As of 2020, the GVA in the construction sector in Kirklees was £472 million. Between 2010 and 2020, this increased by 51.3%. This is an absolute increase of £160 million.

Figure 6.7: Gross Value Added at Current Basic Prices, 2010-2020



Source: Office for National Statistics

6.3.19 Using data produced by ONS, it is possible to calculate GVA per worker. In 2020 the GVA per worker in Kirklees was approximately £47,070. This figure is just below the regional GVA per worker for Yorkshire and The Humber of £51,850, however both of these figures are substantially below the GVA per worker across England of £75,175.

Unemployment

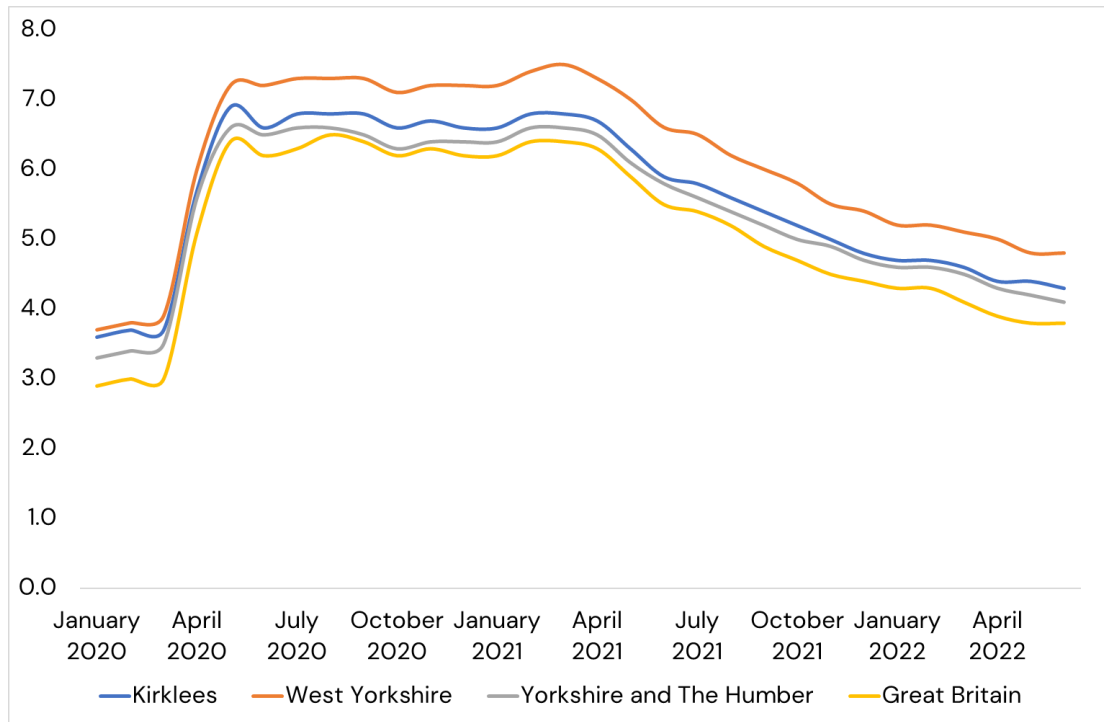
6.3.20 The claimant count gives the number of people claiming Jobseeker's Allowance plus those who claim Universal Credit and are required to seek work and be available for work. Figure 6.8 shows the claimant count as a proportion of those aged 16–64 in Kirklees, West Yorkshire, Yorkshire and The Humber and Great Britain for every month from January 2020 to June 2022. A sharp rise is evident in the claimant count in all areas between March and April 2020, which is a direct result of the impact of Covid-19. This is down in part to more people claiming unemployment-related benefits and also because of changes made to the system by government which means more people are eligible to claim benefits. Further details on this are provided below.

6.3.21 ONS state that enhancements to Universal Credit as part of the UK Government's response to the coronavirus mean that an increasing number of people became eligible for unemployment-related benefit support despite still being in work. Consequently, changes in the claimant count will not be wholly accurate because of changes in the number of people who are not in work. It is not possible to identify to what extent people who are employed or unemployed have affected the numbers.

6.3.22 In January 2020, the claimant count rate in Kirklees was 3.6%. At the height of the pandemic it reached 6.9% but has since decreased to 4.3% in June 2022. This rate is below the rate for the West Yorkshire area (4.8%) but remains above the figures for both Yorkshire and The Humber (4.1%) and Great Britain (3.8%).

6.3.23 Changes to the benefits system which came into force at the beginning of October 2021 may mean the claimant count starts to drop at a slightly faster rate, however it is still reasonable to assume that the legacy effects of the pandemic mean it will be higher than it was pre-March 2020. Figure 6.7 shows the data in more detail.

Figure 6.8: Claimant count as % of residents aged 16-64, January 2020 – April 22

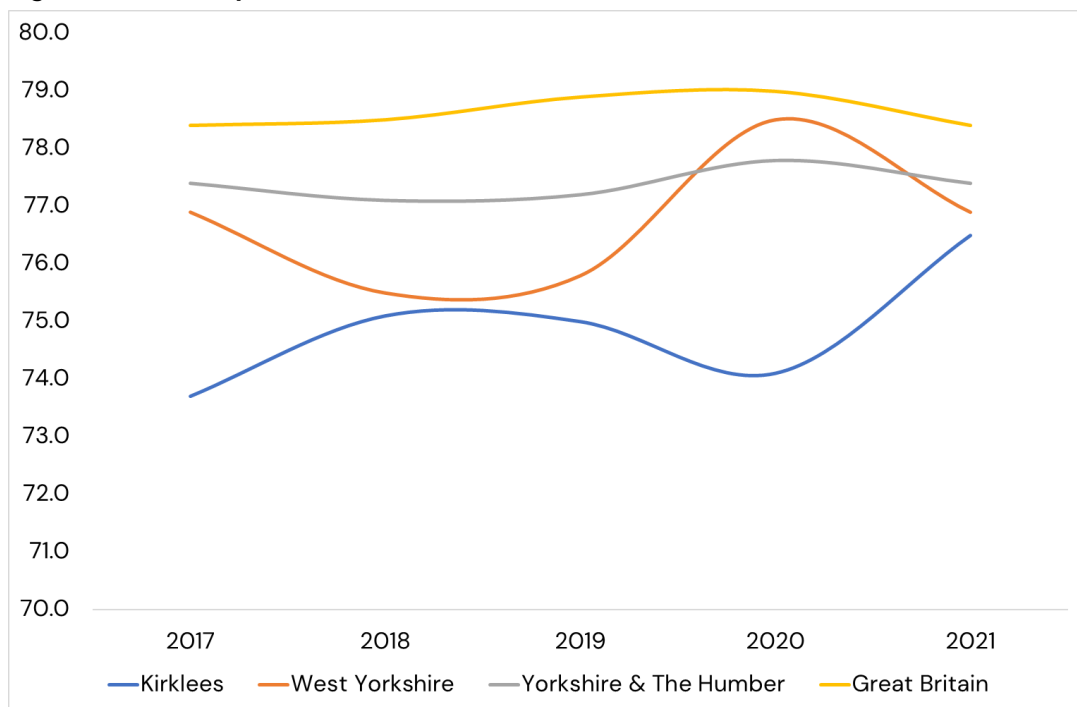


Source: Nomis

Economic Activity

6.3.24 Economic activity rates (the proportion of the working age population in, or seeking work) have fluctuated over the past four years, for Kirklees the rate is currently around 76.5%. This figure is below the rates for West Yorkshire (76.9%), Yorkshire & The Humber (77.4%) and Great Britain (78.4%). Figure 6.9 shows the data in more detail.

Figure 6.9: Activity rate (16-64), 2017-2021



Source: ONS, Annual Population Survey

Crime

- 6.3.25 Based on data from LG Inform³, the number of total recorded offences per 1,000 population in Q1 2022 was 102 in Kirklees. This represents an increase of 14.4% from the 2021 Q1 figure. This rate was lower than the average rate across Yorkshire and The Humber (108) which increased by 13.7%.
- 6.3.26 The rate of victim-based crimes reported in Q1 2022 was 81 in Kirklees, which again was below the average for Yorkshire and The Humber of 87. However, when looking at rates of violence against the person, the most common type of offence, Kirklees saw a rate above the average for Yorkshire and The Humber. In Kirklees the rate was 46 per 1,000, whilst for Yorkshire and The Humber this figure is rounded to 44 per 1,000.
- 6.3.27 It is noted that, as indicated under 'Deprivation', one of the LSOAs in which the Site is located is in the top 10% most deprived for crime in England. This indicates that overall, crime is an issue of note in Huddersfield Town Centre.

Health Overview

- 6.3.28 Overall, many of the health indicators in Kirklees are significantly worse when compared to averages for England. Life expectancy for males in Kirklees is 78.5, this compares to 78.7 in Yorkshire and the Humber and is significantly worse than the England average of 79.6⁴. Life expectancy for females in Kirklees is 82.5, compared to 82.4 in Yorkshire and the Humber and 83.2 in England. Life expectancy in Kirklees also varies within the local authority. Life expectancy is 9.1 years lower for men and 6.9 years lower for women in the most deprived areas of Kirklees than the least deprived areas.
- 6.3.29 The under 75 mortality rate in Kirklees was 364.9. This was above the rate in the North West at 363.2 and is significantly worse than the rate in England at 330.5. This was similar for the under 75 mortality rate from cardiovascular diseases in Kirklees where the rate was 83 per 100,000. This compares to 82 in Yorkshire and the Humber and 71.7 in England.
- 6.3.30 In Kirklees 21.1% of children in year 6 were classified as obese, this is better than the rate in the Yorkshire and the Humber of 21%, but above the rate in England of 20.2%. At a ward level, data from Public Health England⁵ shows that in Newsome ward (within which the Proposed Development sits), 24.5% of year 6 children were classed as obese between 2017/18 and 2019/20. This was the fourth highest rate of all the wards within Kirklees.
- 6.3.31 Data from the Office for National Statistics looks at annual personal well-being estimates⁶. The data presents results from a survey where respondents rank how

³ Available at: [Total recorded offences \(excluding fraud\) \(offences per 1,000 population\) in Kirklees | LG Inform \(local.gov.uk\)](https://www.local.gov.uk)

⁴ Public Health Profile: Kirklees, 2019. Public Health England, March 2020. Accessed 3 August 2022. Available at: <https://fingertips.phe.org.uk/static-reports/health-profiles/2019/E08000034.html?area-name=Kirklees>

⁵ Obesity Profile: Kirklees 2017/18-2019/20. Accessed 3 August 2022. Available at: <https://fingertips.phe.org.uk/profile/national-child-measurement-programme/data#page/3/gid/1938133288/pat/401/par/E08000034/ati/8/iid/93107/age/201/sex/4/cat/-1/ctp/-1/yr/3/cid/4/tbm/1/page-options/car-do-0>

⁶ Office for National Statistics: Annual Personal well-being estimates. Accessed 3 August 2022. Available here: <https://www.ons.gov.uk/peoplepopulationandcommunity/wellbeing/datasets/headlineestimatesofpersonalwellbeing>.

satisfied they were with life on a scale from 0 to 10, where 0 was not satisfied at all and 10 was completely satisfied. In Kirklees, the average rate for life satisfaction in 2020/21 was 7.20 (see figure 6.5). This was below the average rate of 7.32 in Yorkshire and the Humber and the rate of 7.38 in the whole of England.

6.3.32 The same survey asks respondents how anxious they felt yesterday, where a rank of 0 is not anxious at all and a rank of 10 is completely anxious. The average rank for anxiety in Kirklees for 2020/21 was 3.51. This is above the average rank seen in Yorkshire and the Humber of 3.36 and the average seen in England of 3.31.

Huddersfield Town Centre investment and change

6.3.33 A research briefing from the House of Commons Library on Town Centre Regeneration⁷ looks at the trends and challenges being faced by high streets and what can be done to support town centres. Before the Covid-19 pandemic, high streets were already facing challenges through changes in the retail industry, consumers shopping habits and spending power and the change in use of office space. These impacts were only accelerated by the Covid-19 pandemic. The Government has given focus to supporting high streets following the pandemic through its levelling up agenda and published policy on how they will build back better on the high streets.

6.3.34 The report looks at a paper produced by the Centre for Local Economic Strategies on building resilient town centres⁸. The challenges faced across town centres and how these can be overcome to build resilient centres is considered. The report identifies that one focus of town centres to become more resilient is to redefine or broaden their functions. It is outlined that some town centres need to take a more balanced approach away from focusing on just retail and encourage more leisure use on the high street alongside retail and focus on community needs. The Proposed Development will deliver a mix of culture and leisure facilities alongside retail and food and drink to create a diverse mix of amenities.

6.3.35 Research from What Works Centre for Economic Growth⁹ looks at how investment and interventions can be effective in promoting economic growth on high streets and in town centres. Improving high streets and town centres was already a priority before the Covid-19 pandemic, however, the challenges from the pandemic such as a shift towards online shopping and an increase in the number of people working from home has exacerbated the problems that town centres were already facing.

6.3.36 One of the points found in the research is the need for an increase in demand to meet supply-side intervention to ensure that there is a sustained improvement in the high street or town centre. As outlined above, between 2011 and 2020 there has been an increase in the population in Kirklees (4.3%) and a significant increase in the population of Huddersfield Town Centre (45.5%) which could be considered a latent demand for the Proposed Development, not least the large increase in population of working age (16 to 64 years). The working age population would be expected to have disposable income which could be spent at the Proposed Development once it is operational.

⁷ *Town Centre Regeneration*: House of Commons Library, December 2021.

⁸ *Developing Resilient Town Centres*: Centre for Local Economic Strategies & DCLG, 2016.

⁹ *Evidence Briefing: local growth, high street and town centres*: What Works Centre for Local Economic Growth, March 2021.

- 6.3.37 Further research by the High Street Taskforce¹⁰ also identifies the fall in footfall in town centres with high street footfall falling by 5% since 2015. Footfall declined significantly during the peak of the Covid-19 pandemic lockdowns with major cities being impacted the most: on average footfall fell by 75.9% between March and June 2020. However, this decline in footfall does not mean all high streets are failing, but provides a signal that the function of high streets is changing. There has been an increase in the number of town centres that are considered 'multifunctional', with retail declining as the dominant occupier. Multifunctional towns have suffered lower declines in footfall than 'comparison retail' towns. It is also expected that multifunctional towns recover faster from the effects of the Covid-19 pandemic. Kirklees Cultural Heart is considered to be a fundamental element of Huddersfield Town Centre being considered as a multifunctional town, as opposed to a retail town.
- 6.3.38 Although in general there has been a fall in footfall on high streets, especially in bigger cities, district and neighbourhood centres haven't been as badly affected. Between March and June 2020, footfall in district centres only fell by 34.5%, this compares to the 75.9% drop seen in major cities. With essential retail and open space being crucial during the Covid-19 lockdowns, district and neighbourhood centres have been rediscovered. Therefore, schemes such as Kirklees Cultural Heart would benefit from more support through national, regional and local policy to ensure they are attracting local people through providing a diverse range of services and ensuring high footfall.

6.4 Assessment of Likely Significant Effects

Demolition and Construction

Scenario 1: Business As Usual

Employment

- 6.4.1 The Outline Business case for the Proposed Development estimates the build cost at £14.9 million for the business as usually scenario¹¹. Using professional experience, we have estimated the build time at 18-months.
- 6.4.2 To estimate construction employment supported during the building phase, the total construction cost has been divided by the average turnover per construction employee in Yorkshire and the Humber of £142,614¹². Over the estimated 18-month build programme, 69 construction jobs could be supported on-site per annum.
- 6.4.3 It is widely recognised that construction has knock-on effects for other sectors, which leads to increased demand for building materials and equipment at the construction phase, as well as furniture, carpets etc. following completion. This generates and sustains employment in other sectors. This is known as the 'multiplier effect' and analysis published by the Homes & Communities Agency (HCA – now Homes England) indicates that the employment multiplier for construction activities in the UK is 2.7 – i.e. for every construction job created, a further 1.7 jobs are supported in the wider economy. This

¹⁰ Review of High Street Footfall July 2019 – June 2020: High Streets Task Force, September 2020.

¹¹ The Business as usual scenario aligns with option 1 do nothing in the outline business case.

¹² Calculated using data for the Yorkshire and the Humber construction sector from the 2021 edition of Business Population Estimates produced by the Office for National Statistics.

suggests that as well as the 69 on-site jobs, development could support a total of 118 additional jobs during the build phase.

- 6.4.4 In total, an estimated 188 jobs temporary jobs could be supported during the 18-month build phase.
- 6.4.5 The sensitivity of the receptor in Kirklees is **high** given that employment declined between 2015 and 2020. The area also has high levels of deprivation surrounding the site. The magnitude of the effect is considered to be **medium** (188 jobs accounts for 2.1% of construction employment in Kirklees as of 2020). Therefore, the significance of the effect is considered to be **major beneficial** which is significant in EIA terms.

Economic Output

- 6.4.6 Another way of looking at the economic impact of the construction phase is to calculate the contribution a development makes to wealth creation, as measured by the increase in the value of goods and services generated within an area. This can be done by looking at the increase in GVA¹³, a common proxy for economic output. Using ONS data, it is possible to calculate GVA per employee by sector at a regional level¹⁴. Applying these estimates to the employment estimates outlined above, the construction of the Proposed Development could generate around £10 million of GVA per annum or £15million of GVA over the 18-month build timeframe in current prices.
- 6.4.7 The sensitivity of the receptor in Kirklees is **medium** given the GVA in the construction sector in Kirklees increased by 51.3% between 2010 and 2020. The magnitude of the effect is considered to be **medium** as the GVA generated per annum during the construction phase would lead to a 2.1% uplift in the GVA generated by the construction sector in 2020. As such, the significance of the temporary effect is assessed as being **major beneficial** in Kirklees which is significant in EIA terms.

Amenity Impacts

- 6.4.8 It is noted that the assessments relating to Air Quality (ES Chapter 9) and Noise (standalone assessment report) used to inform the consideration of potential impacts on nearby residents and users of the Town Centre during the period of construction have been undertaken based the proposals associated with the PWF. As such, the discussion and associated impacts from a socio-economic and health perspective relating to amenity impacts during the construction phase are presented under Scenario 2: Preferred Way Forward and are accepted as representative of the worst case position for both Scenarios 1 and 2 assessed within this chapter.

Scenario 2: Preferred Way Forward

Employment

- 6.4.9 As outlined in the Outline Business Case the construction cost for the Preferred Way Forward is estimated at £146.4 million¹⁵ over a 3-year build timeframe.

¹³ Gross value added is the measure of the value of goods and services produced in an area, industry or sector of an economy.

¹⁴ GVA per employee estimates calculated using data from the 2020 Business Register and Employment Survey, as well as regional GVA estimates for 2019 – both published by ONS.

¹⁵ This includes the total construction cost and allowance for contingency and risk costs.

- 6.4.10 To estimate construction employment supported during the building phase, the total construction cost has been divided by the average turnover per construction employee in Yorkshire and the Humber of £142,614¹⁶. Over the estimated 3-year build programme, 342 construction jobs could be supported on-site per annum.
- 6.4.11 Applying the same multiplier as used above in the business as usual scenario, as well as the 342 on-site jobs, the development could support a total of 582 additional jobs during the build phase.
- 6.4.12 In total, an estimated 924 temporary jobs could be supported by the 3-year build phase.
- 6.4.13 The sensitivity of the receptor in Kirklees is **high** given that employment declined between 2015 and 2020. The area also has high levels of deprivation surrounding the site. The magnitude of the effect is considered to be **high** (924 direct construction jobs per annum in Kirklees accounts for 10.3% of construction employment in 2020). Therefore, the significance of the temporary effect on employment during construction is **major beneficial** in Kirklees which significant in EIA terms.

Economic Output

- 6.4.14 Another way of looking at the economic impact of the construction phase is to calculate the contribution a development makes to wealth creation, as measured by the increase in the value of goods and services generated within an area. This can be done by looking at the increase in GVA¹⁷, a common proxy for economic output. Using ONS data, it is possible to calculate GVA per employee by sector at a regional level¹⁸. Applying these estimates to the employment estimates outlined above, the construction of the Proposed Development could generate around £49.3 million of GVA per annum or £148million of GVA over the 3-year build timeframe in current prices.
- 6.4.15 The sensitivity of the receptor in Kirklees is **medium** given the GVA in the construction sector in Kirklees increased by 51.3% between 2010 and 2020. The magnitude of the effect is considered to be **high** as the GVA generated per annum during the construction phase would lead to a 10.5% uplift in the GVA generated by the construction sector in 2020. As such, the significance of the temporary effect is assessed as being **major beneficial** in Kirklees which is significant in EIA terms.

Amenity Impacts

- 6.4.16 There is potential for negative impacts on local amenities, including closest residents and users of the immediate surrounding area, as a result of pollution and nuisance caused by construction works. This includes the potential for dust, noise and vibration generated as a result of construction traffic movements and construction activities on site.
- 6.4.17 For the purposes of the consideration of potential impacts on local amenities during the construction period in the context of the Socio-Economic and Health assessment, a

¹⁶ Calculated using data for the Yorkshire and the Humber construction sector from the 2021 edition of Business Population Estimates produced by the Office for National Statistics.

¹⁷ Gross value added is the measure of the value of goods and services produced in an area, industry or sector of an economy.

¹⁸ GVA per employee estimates calculated using data from the 2020 Business Register and Employment Survey, as well as regional GVA estimates for 2019 – both published by ONS.

conservative approach is taken. It is assumed that there is potential for receptors to have a **high** sensitivity in respect of their vulnerability to change, and that the magnitude of effect is also **high**, albeit for a short, temporary period within the construction phase.

- 6.4.18 To address potential negative effects, a Construction Environment Management Plan (CEMP) will be prepared and secured by Condition, which will uphold construction works to a wide range of best practice measures throughout the construction phase, and serve to minimise any potential temporary construction effect to **minor to moderate adverse** in Huddersfield Town Centre which is **not significant** in EIA terms

Operation

Scenario 1: Business As Usual

Employment

- 6.4.19 Based on calculations provided by IPW..., once operational, the business as usual scenario will support an estimated 61 gross full-time equivalent (FTE) jobs.
- 6.4.20 The sensitivity of the receptor in Kirklees is **medium** given that employment in Kirklees declined slightly between 2015 and 2020 and unemployment is almost in line with regional and national trends. The magnitude of the effect is **negligible** given that the 61 gross FTE jobs from the scheme once it is operational account for 0.04% of total employment in Kirklees. As such, the significance of the permanent employment on Kirklees is considered to be **negligible** which is **not significant** in EIA terms.
- 6.4.21 The sensitivity of the receptor in Huddersfield Town Centre is **medium** given that employment in Huddersfield Town Centre declined between 2015 and 2020 and unemployment is almost in line with regional and national trends. The magnitude of the effect is **low** given that the 61 gross FTE jobs from the scheme once it is operational account for 0.3% of total employment in Huddersfield Town Centre. As such, the significance of the permanent employment on Huddersfield Town Centre is considered to be **minor beneficial** which is **not significant** in EIA terms.

Economic Output

- 6.4.22 In the Outline Business Case produced for the scheme used GVA per employee of £34,000. Applying this to the 50 net additional FTEs outlined above gives the net GVA per annum from the Proposed Development at £1.7million.
- 6.4.23 The sensitivity of the receptor in Kirklees is **medium** given that between 2010 and 2020, the GVA in Kirklees for all industries increased by 29.7% which was between the growth seen at a regional and national level. The magnitude of the effect is **negligible** given that the annual GVA generated by the scheme once operational accounts for 0.02% of total GVA in Kirklees. As such, the permanent effect if GVA once the scheme is operational is considered to be **negligible** in Kirklees which is **not significant** in EIA terms.
- 6.4.24 Data relating to the change in GVA at the LSOA spatial scale is not available. Therefore, to enable consistency and worst case assumptions to be applied, the sensitivity of the receptor in Huddersfield Town Centre is assumed to align with that identified for Kirklees, i.e. **medium**. The magnitude of the effect is **low** given that the annual GVA generated by the scheme once operational accounts for 0.2% of total GVA in Huddersfield Town Centre. As such, the permanent effect if GVA once the scheme is operational is

considered to be **minor beneficial** in Huddersfield Town Centre which is **not significant** in EIA terms.

Health and Wellbeing

6.4.25 The HIA presented in **Appendix 6.1** of this ES Chapter, provides a detailed review of potential health and wellbeing impacts of the Proposed Development. Considerations were made in respect of a wide range of relevant determinants, considering social, economic and physical factors which all have potential to influence health and wellbeing of local residents and/or of the Proposed Development.

6.4.26 In association with Scenario 1: BAU, it is noted that there would be investment of £30m to maintain the existing facilities in their current condition, and also include some limited works to the listed Library building which also houses the current Gallery and Queensgate market. It is expected that health and wellbeing effects associated with Scenario 1: BAU would include:

- 61 gross FTE jobs once operational (including existing and generated employment).
- £30m economic investment which will have direct and indirect benefits for the District's economy.
- Maintenance of existing buildings on site and some works to the Library building, albeit limited in scope.
- Continuation of range of amenities and activities offered to date.

6.4.27 The sensitivity of the receptors, local residents and/or users of the Proposed Development, is **medium** given that claimant count is above regional and national averages, economic activity rate is below regional and national averages albeit fast rate of growth seen in last 12 months compared to other spatial scales, deprivation is particularly high in the Town Centre, crime is noted as being a key issue in the area, fewer people are physically active in Kirklees than at the regional / national level and mental health is slightly worse than regional/national averages, and there are noted differences in life expectancy of males and females between the least and most deprived areas of the town. The magnitude of the effect is considered to be **low** as the area is maintained for use as community facilities and amenity, and there is some investment made under Scenario 1: BAU, but the potential for change would be limited. As such, the significance of the permanent effect is assessed as being **minor beneficial** in Kirklees and Huddersfield Town Centre which is **not significant** in EIA terms.

Scenario 2: Preferred Way Forward

Employment

6.4.28 The Proposed Development will create permanent employment opportunities once it is built, many of which are likely to prove attractive to residents of Kirklees and the wider area.

6.4.29 Based on information provided by IPW... it is estimated that the Proposed Development will support 459 gross full-time equivalent (FTE) jobs.

- 6.4.30 The sensitivity of the receptor in Kirklees is **medium** given that employment in Kirklees declined slightly between 2015 and 2020 and unemployment is almost in line with regional and national trends. The magnitude of the effect is **low** given that the 459 gross FTE jobs from the scheme once it is operational account for 0.2% of total employment in Kirklees. As such, the significance of the permanent employment on Kirklees is considered to be **minor beneficial** which is **not significant** in EIA terms.
- 6.4.31 The sensitivity of the receptor in Huddersfield Town Centre is **medium** given that employment in Huddersfield Town Centre declined between 2015 and 2020 and unemployment is almost in line with regional and national trends. The magnitude of the effect is **medium** given that the 459 gross FTE jobs from the scheme once it is operational account for 1.8% of total employment in Huddersfield Town Centre. As such, the significance of the permanent employment on Kirklees is considered to be **moderate beneficial** which is **significant** in EIA terms.

Economic Output

- 6.4.32 Based on calculations provided by IPW... on the GVA (a proxy for economic output) associated with the Proposed Development. On an annual basis the net GVA contribution is calculated to be £10.2 million.
- 6.4.33 The sensitivity of the receptor in Kirklees is **medium** given that between 2010 and 2020, the GVA in Kirklees for all industries increased by 29.7% which was between the growth seen at a regional and national level. The magnitude of the effect is **low** given that the annual GVA generated by the scheme once operational accounts for 0.1% of total GVA in Kirklees. As such, the permanent effect of GVA once the scheme is operational is considered to be **minor beneficial** in Kirklees which is **not significant** in EIA terms.
- 6.4.34 Data relating to the temporal change in GVA at the LSOA spatial scale is not available. Therefore, to enable consistency and worst case assumptions to be applied, the sensitivity of the receptor in Huddersfield Town Centre is assumed to align with that identified for Kirklees, i.e. **medium**. The magnitude of the effect is **medium** given that the annual GVA generated by the scheme once operational accounts for 1.2% of total GVA in Huddersfield Town Centre¹⁹. As such, the permanent effect of GVA once the scheme is operational is considered to be **moderate beneficial** in Huddersfield Town Centre which is **significant** in EIA terms.

Health and Wellbeing

- 6.4.35 The HIA presented in **Appendix 6.1** of this ES Chapter, provides a detailed review of potential health and wellbeing impacts of the Proposed Development. Considerations were made in respect of a wide range of relevant determinants, considering social, economic and physical factors which all have potential to influence health and wellbeing of local residents and/or of the Proposed Development.
- 6.4.36 **Appendix 6.1** HIA notes that the Proposed Development will have a beneficial impact on health and wellbeing overall once completed and operational. Key benefits include, but are not limited to:

¹⁹ Note: GVA for Huddersfield Town Centre has been calculated by multiplying the total employment in Huddersfield Town Centre (26,000) by the GVA per job given in the Outline Business Case (£34,000) giving GVA in Huddersfield Town Centre of £884 million.

- Generation of 459 gross FTE jobs, which will contribute to improving the proportion of people who are of working age, economically active and in employment.
- Economic investment which will have direct and indirect benefits for the District's economy.
- Creation of refurbished and new, safe, exciting and inspiring community spaces, both external to and within the buildings proposed, through well considered and informed design.
- Enable accessibility for all individuals in all parts of the Proposed Development, both internally within buildings proposed and externally in public realm areas.
- Offer a wider range of amenities and activities to suit people of varying age groups and for varying budgets, which have the potential to benefit physical and mental health, directly and indirectly.
- Generation of additional social value in the form of a wellbeing value and an amenity value, which overall has been estimated by the Outline Business Case to be worth £10.5 million per annum. In addition, the estimated 1 million visitors to the Proposed Development are estimated to generate £15.3 million in spend per annum.

6.4.37 The sensitivity of the receptors, local residents and/or users of the Proposed Development, is **medium** given that claimant count is above regional and national averages, economic activity rate is below regional and national averages albeit fast rate of growth seen in last 12 months compared to other spatial scales, deprivation is particularly high in the Town Centre, crime is noted as being a key issue in the area, fewer people are physically active in Kirklees than at the regional / national level and mental health is slightly worse than regional/national averages, and there are noted differences in life expectancy of males and females between the least and most deprived areas of the town. The magnitude of the effect is considered to be **high** as there will be significant amount of investment under Scenario 2: PWF, which will result in complete refurbishment and new, additional provision for a wide range of leisure and community uses. As such, the significance of the permanent effect is assessed as being **major beneficial** which is **significant** in EIA terms: this applies to both Kirklees District and Huddersfield Town Centre spatial scales.

6.5 Mitigation, Enhancement and Residual Effects

- 6.5.1 There are no mitigation or enhancement measures specific to socio-economic and health.
- 6.5.2 Residual effects remain unchanged from those impacts identified in Section 6.4 Assessment of Likely Significant Effects of this ES chapter.

6.6 Cumulative Effects

- 6.6.1 There are no cumulative schemes identified that need to be assessed from a socio-economic and health perspective.

6.7 Summary

Introduction

6.7.1 This chapter considered the potential socio-economic effects of the Proposed Development during both the construction and operational phases.

Baseline Conditions

6.7.2 Population has increased at a considerably faster growth rate in the last 10 years in Huddersfield Town Centre in comparison to Kirklees as a whole, West Yorkshire Combined Authority and Great Britain. Those people within working age (16–64 years) have seen the greatest growth (potentially attributable in part to the increase in the number of students studying and staying in Huddersfield), with a smaller proportion of growth shown for those aged 0–15 years, whilst there was a reduction in those aged 65 years and over. Population projections indicate that there is expected to be similar growth rates at all spatial scales in the over 65 years age group, whereas there is predicted to be a decline in proportion of the population between 0–15 years and 16–64 years.

6.7.3 The part of the District in which the Proposed Development is located is in at least the top 30% most deprived LSOAs in the country, with part of the Site and some of the immediate surrounding areas noted as being within the top 10% most deprived LSOAs in the country.

6.7.4 Employment in Kirklees declined slightly between 2015 and 2020 and unemployment is almost in line with regional and national trends. The claimant count in Kirklees is above regional and national averages, economic activity rate is below regional and national averages albeit a fast rate of growth was seen in the last 12 months compared to other spatial scales.

6.7.5 There are 17,930 businesses recorded as of 2021 in Kirklees with a rise of 29.4% seen since 2011. Of these businesses, 25% (4,500) are the retail, accommodation and food services and the arts, entertainment and recreation sectors which are the sectors most likely to be supported by the Proposed Development. This and all other sectors had grown in the period 2011 to 2021.

6.7.6 Fewer people are physically active in Kirklees than at the regional and national level and mental health is slightly worse in Kirklees than regional and national averages. There are noted differences in life expectancy of males and females between the least and most deprived areas of the town.

Likely Significant Effects

6.7.7 Effects are identified for both the 'Do Nothing' scenario, in which minimal investment is made, as well as the 'Preferred Way Forward' scenario, in which the maximum potential investment is assumed. The potential range of effects generated by the Proposed Development is presented.

6.7.8 In respect of the construction phase, the assessment indicates that the Proposed Development will have the following temporary economic effects:

- Generate between 188 and 924 temporary jobs per annum over the build period.

- Generate between £10million and £49.3million of gross value added per annum is estimated to be contributed to the local economy during the build programme.
- 6.7.9 In EIA terms, these impacts are considered to have a significant beneficial temporary effect at the District scale for both the 'Do Nothing' and the 'Preferred Way Forward' scenario.
- 6.7.10 Once operational, the effects are identified at both the Huddersfield Town Centre spatial scale as well as the Kirklees District scale to determine spatial differentiation in respect of the expected effects. In respect of the operational phase, the assessment indicates that the Proposed Development will have the following permanent economic effects:
- Generate between 61 and 459 gross FTE jobs.
 - Generate between £1.7million and £10.2million gross value added per annum contributed to the local economy.
- 6.7.11 In EIA terms, these impacts are considered to have a permanent beneficial effect at both the Huddersfield Town Centre and Kirklees District scale, but it is only the 'Preferred Way Forward' scenario that generates the significant beneficial effects.
- 6.7.12 In terms of health and wellbeing, during the construction phase there is potential for a temporary adverse effect as a result of pollution and nuisance on local residents and users of the Town Centre. However, this will be minimized by best practice construction measures to be implemented by a Construction Environment Management Plan, secured by Condition. The effect is not expected to be significant in EIA terms.
- 6.7.13 Once operational, the Proposed Development is expected to have a significant beneficial impact at both the Huddersfield Town Centre and Kirklees District spatial scale on both physical and mental health and wellbeing. Key benefits relate to additional employment improving the proportion of people who are working age, economically active and in employment, creation of refurbished and new, safe, exciting and inspiring community spaces, accessibility for all individuals, and the offer of a wide range of amenities and activities to suit people of varying age groups and budgets.

Mitigation and Enhancement

- 6.7.14 There are no mitigation or enhancement measures specific to socio-economic and health.

Conclusion

- 6.7.15 A review of relevant literature has been undertaken focused on the issues faced by town centres in the UK and options for effective management to reinstate use, vibrancy and ultimately economic growth of town centres in the context of historic economic downturn and, most recently, Covid-19 pandemic. Overall, research has indicated that a broad mix of uses within a town centre generates greatest potential for economic revival and growth. The proposal to reinvigorate and increase the provision of leisure and cultural amenity in Huddersfield Town Centre through this Proposed Development, with the overall aim of contributing to the regeneration and economic growth of Huddersfield Town Centre, is in line with research findings. Specific to the Socio-Economic and Health assessment of the Proposed Development, it is considered that beneficial socio-economic effects will be generated and will contribute to much needed regeneration in the Town Centre.

6.7.16 **Table 6.13** presents a summary of the effects, mitigation and residual effects in relation to Socio-Economics and Health.

Table 6.13: Summary of Effects

Development Phase	Description of Effect	Nature of Effect	Receptor	Sensitivity of Effect	Magnitude of Effect	Significance	Mitigation	Residual Effect
Demolition and Construction								
<i>Scenario 1: Business As Usual (BAU)</i>								
Employment	Generation of jobs during the build phase	Temporary	Kirklees District	High	Medium	Major Beneficial	None required	Major Beneficial
Economic Output	Generation of GVA by construction employment	Temporary	Kirklees District	Medium	Medium	Major Beneficial	None required	Major Beneficial
Amenity	Potential for nuisance as a result of construction activities	Temporary	Huddersfield Town Centre	High	High	Major Adverse	Construction Environment Management Plan (CEMP)	Minor to Moderate Adverse
<i>Scenario 2: Preferred Way Forward</i>								
Employment	Generation of jobs during the build phase	Temporary	Kirklees District	High	High	Major Beneficial	None required	Major Beneficial
Economic Output	Generation of GVA by construction employment	Temporary	Kirklees District	Medium	High	Major Beneficial	None required	Major Beneficial
Amenity	Potential for nuisance as a result of construction activities	Temporary	Huddersfield Town Centre	High	High	Major Adverse	Construction Environment Management Plan (CEMP)	Minor to Moderate Adverse

Development Phase	Description of Effect	Nature of Effect	Receptor	Sensitivity of Effect	Magnitude of Effect	Significance	Mitigation	Residual Effect
Operation								
<i>Scenario 1: Business As Usual (BAU)</i>								
Employment	Generation of jobs once complete and fully occupied	Permanent	Kirklees District	Medium	Negligible	Negligible beneficial	None required	Negligible beneficial
			Huddersfield Town Centre	Medium	Low	Minor Beneficial	None required	Minor Beneficial
Economic Output	Generation of GVA by operational employment	Permanent	Kirklees District	Medium	Negligible	Negligible beneficial	None required	Negligible beneficial
			Huddersfield Town Centre	Medium	Low	Minor Beneficial	None required	Minor Beneficial
Health and Wellbeing	Potential effects on health and wellbeing of population in respect of a range of related determinants	Permanent	Kirklees District	Medium	Low	Minor Beneficial	None required	Minor Beneficial
			Huddersfield Town Centre	Medium	Low	Minor Beneficial	None required	Minor Beneficial
<i>Scenario 2: Preferred Way Forward</i>								
Employment	Generation of jobs once complete and fully occupied	Permanent	Kirklees District	Medium	Low	Minor Beneficial	None required	Minor Beneficial
			Huddersfield Town Centre	Medium	Medium	Moderate Beneficial	None required	Moderate Beneficial
Economic Output	Generation of GVA by operational employment	Permanent	Kirklees District	Medium	Low	Minor Beneficial	None required	Minor Beneficial
			Huddersfield Town Centre	Medium	Medium	Moderate Beneficial	None required	Moderate Beneficial
Health and Wellbeing	Potential effects on health and wellbeing of population in	Permanent	Kirklees District	Medium	High	Major Beneficial	None required	Major Beneficial
			Huddersfield Town Centre	Medium	High	Major Beneficial	None required	Major Beneficial

ENVIRONMENTAL STATEMENT

Socio-Economics and Health

Development Phase	Description of Effect	Nature of Effect	Receptor	Sensitivity of Effect	Magnitude of Effect	Significance	Mitigation	Residual Effect
	respect of a range of related determinants							