

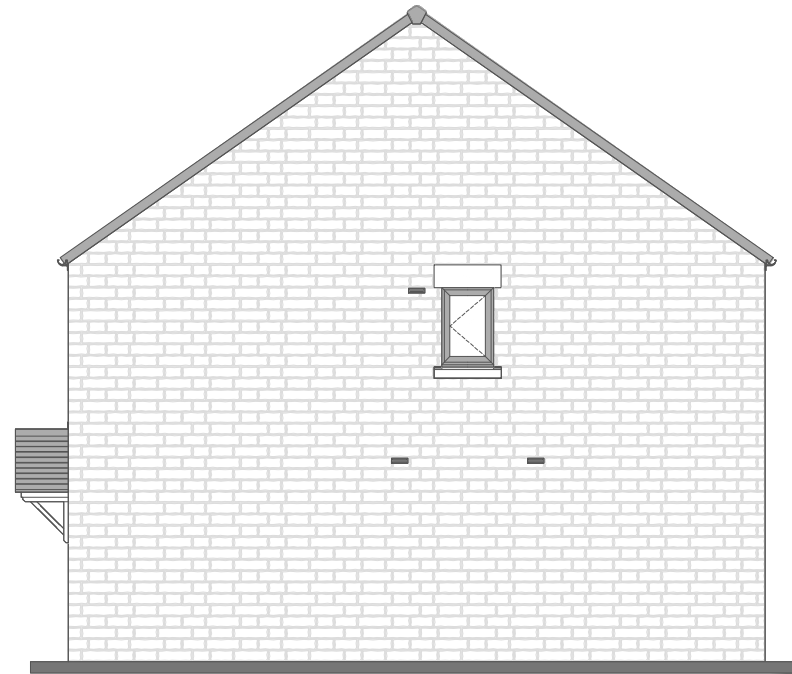
Materials and finishes

PV - Representative in roof PV panel system - Black.
Roof - Wienerberger - New Rivius Antique slate roof tile
Boxed eaves and Verge - Anthracite colour.
Rainwater goods - Black colour.

Walls - Marshall Cromwell pitched faced stone weathered.
Doors - Anthracite coloured.
Windows - Contemporary style casements in anthracite colour.



Rear Elevation



Right Elevation

Pitched face Stone

The Dandelion Detached

10



995

3 Bed

M4 (2)

NDSS

1:100