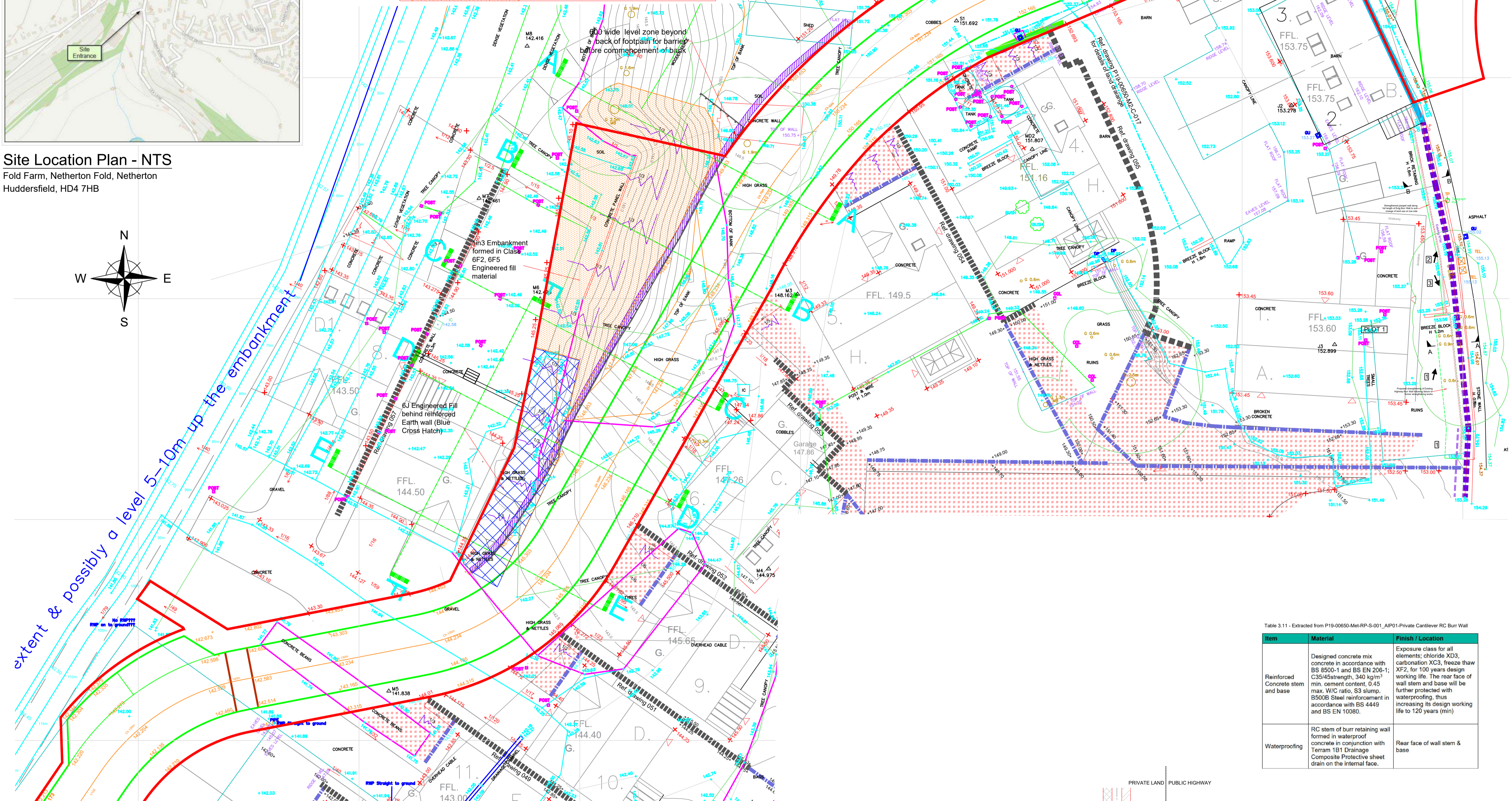
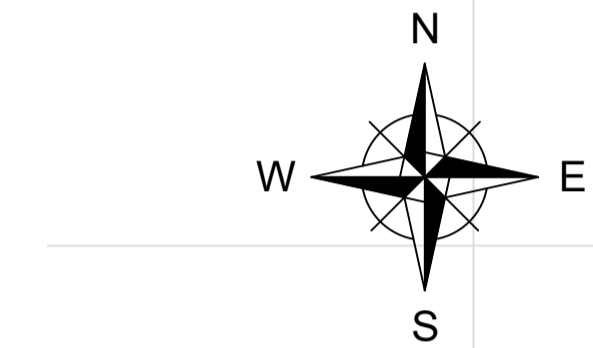


**Site Location Plan - NTS**  
 Fold Farm, Netherton Fold, Netherton  
 Huddersfield, HD4 7HB

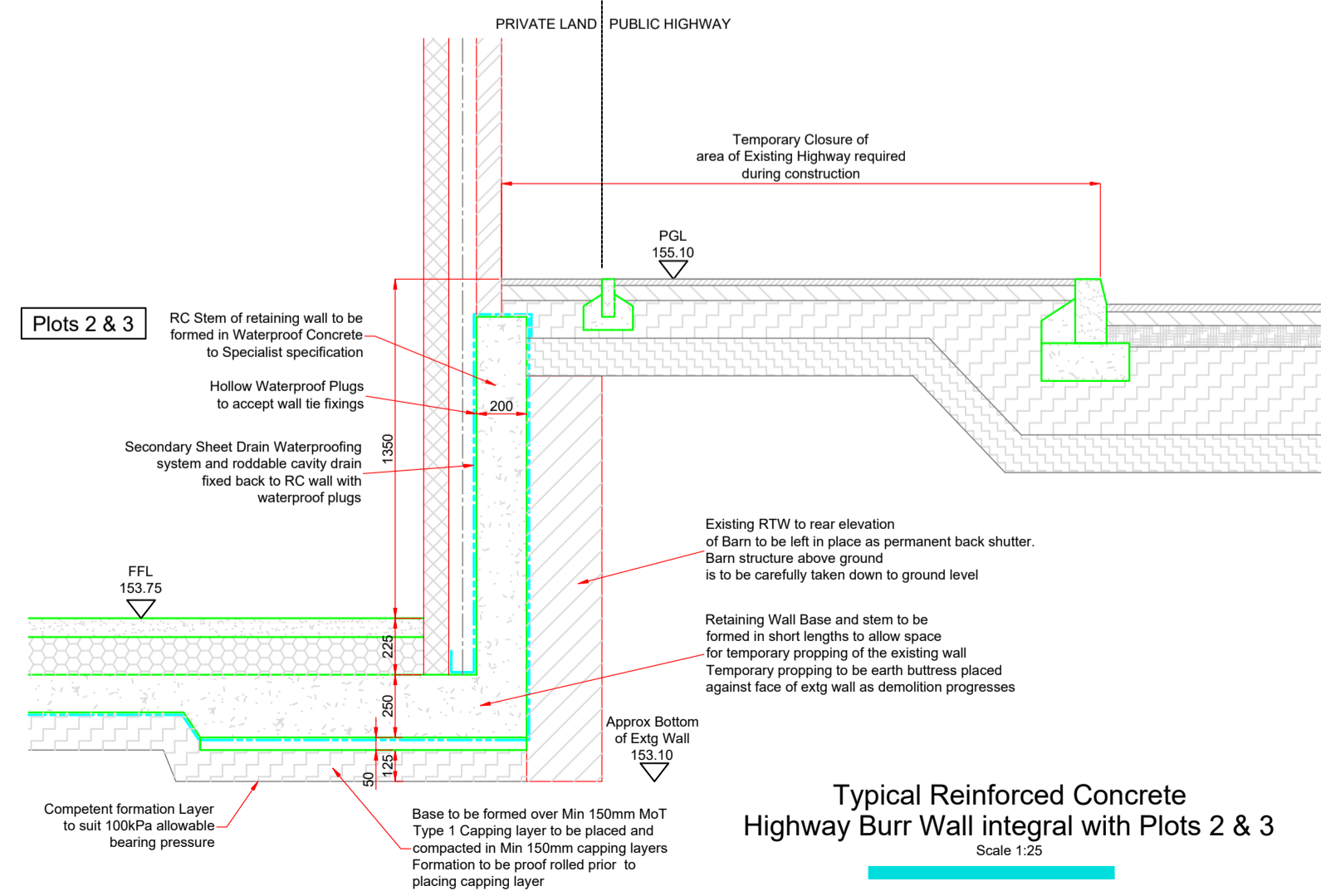
- Highway Burr Wall - Mass Concrete Construction
- Highway Burr Wall - RC Construction
- Highway Burr Wall - Existing Wall
- Development Highway Boundary
- Highway Embankment Section - Ref P19-00650-Met-M2-S-060
- Extent of Highway Embankment - Reinforced Earth
- Extent of Highway Embankment - 6F2/6F5



extent & possibly a level 5-10m up the embankment

Table 3.11 - Extracted from P19-00650-Met-SP-001\_AIP01-Private Cantilever RC Burr Wall

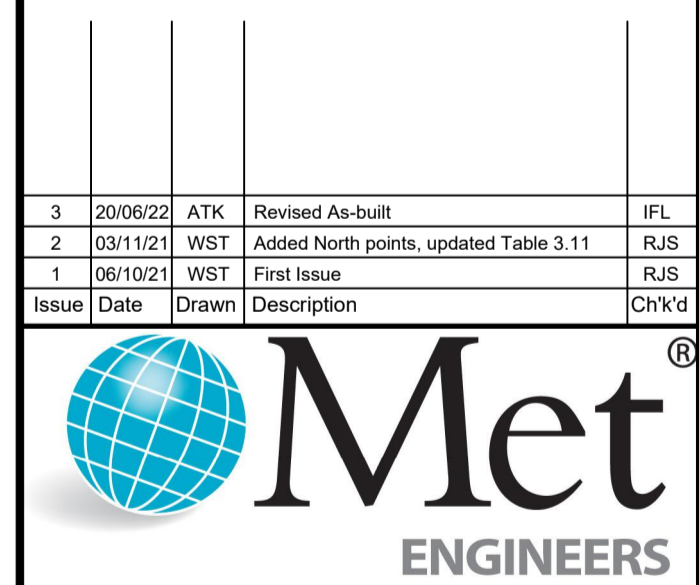
Item	Material	Finish / Location
Reinforced Concrete stem and base	Designed concrete mix concrete in accordance with BS 8500-1 and BS EN 206-1 C35/45 strength, 340 kg/m <sup>3</sup> min. cement content, 0.45 max. W/C ratio, S3 slump, B500B Steel reinforcement in accordance with BS 4449 and BS EN 10080.	Exposure class for all elements: chloride XD3, carbonation XC3, freeze thaw XF2, for 100 years design working life. The rear face of wall stem and base will be further protected with waterproofing, thus increasing its design working life to 120 years (min)
Waterproofing	RC stem of bur retaining wall formed in waterproof concrete in conjunction with Terram 181 Drainage Composite Protective sheet drain on the internal face.	Rear face of wall stem & base



- This drawing and the copyright in it are the property of Met Engineers Limited. It must not be copied, reproduced, or used in whole or in part for any other drawing or reproduced three dimensionally without the consent in writing from Met Engineers Limited and it must be returned to them on request.
- Do not scale dimensions from this drawing in either paper or electronic format.
  - To be read in conjunction with all relevant Engineer's, Architect's and Other drawings and specifications.
  - All building products to be used in strict accordance with the manufacturer's recommendations.
  - Any discrepancies are to be reported to the Engineer immediately.
  - Main Contractor to provide a detailed method statement for all works prior to commencement on site.

Design Risk	
# Hazard/Risk	Mitigation / Residual Risk
1. XXX (Risk-High)	XXX (Risk-Low)
2. XXX (Risk-High)	XXX (Risk-Low)
3. XXX (Risk-High)	XXX (Risk-Low)
4. XXX (Risk-High)	XXX (Risk-Low)
5. XXX (Risk-High)	XXX (Risk-Low)

Issue	Date	Drawn	Description	Ch'k'd
3	20/06/22	ATK	Revised As-built	IFL
2	03/11/21	WST	Added North points, updated Table 3.11	RJS
1	06/10/21	WST	First Issue	RJS



Met Engineers Ltd  
 Southgate House  
 Pontefract Road  
 Stourton, Leeds  
 West Yorkshire  
 LS10 1SW  
 Tel: 0113 200 8900  
 Fax: 0113 200 8901  
 email: admin@metengineers.com  
 www.metengineers.com

Client	Holroyd Homes (Yorkshire) Ltd				
Project	Netherton Fold Netherton				
Title	Highway Burr Wall within Plots 2 & 3				
Drawn	WST	Checked	RJS	Scale	1:200 / 1:25
Date	Oct 21	Date	Oct 21	Status	As-built
Original Size	A1	Issue	3	P19-00650-Met-S-079	