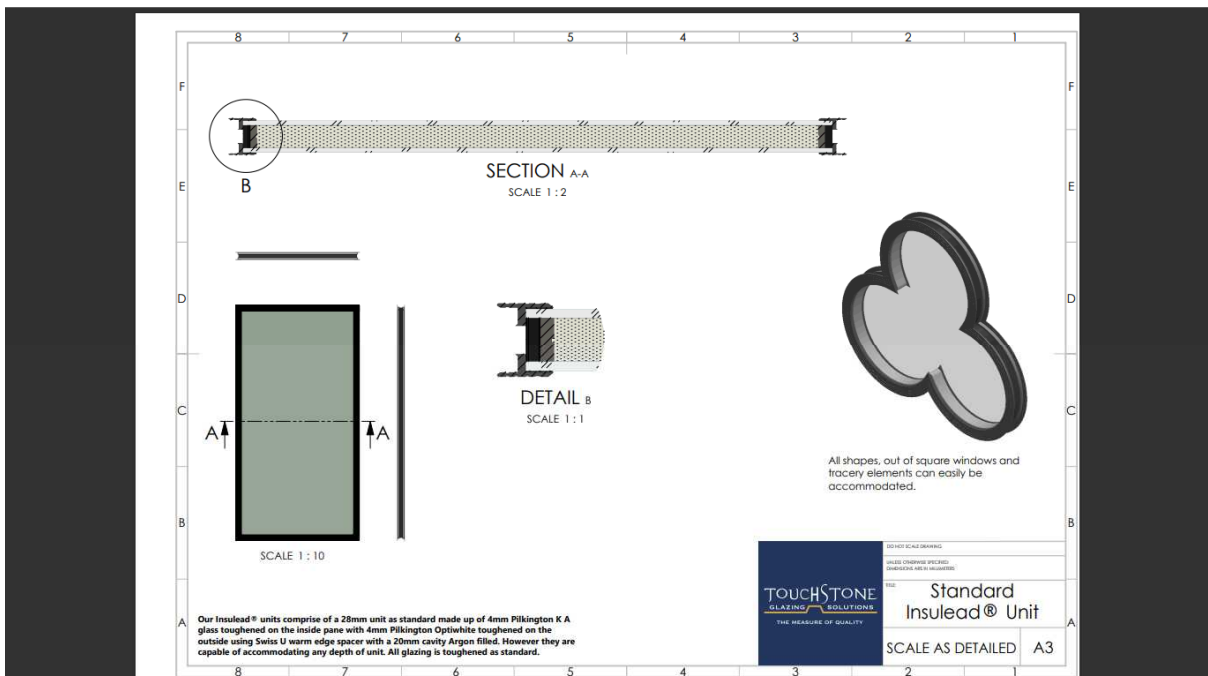
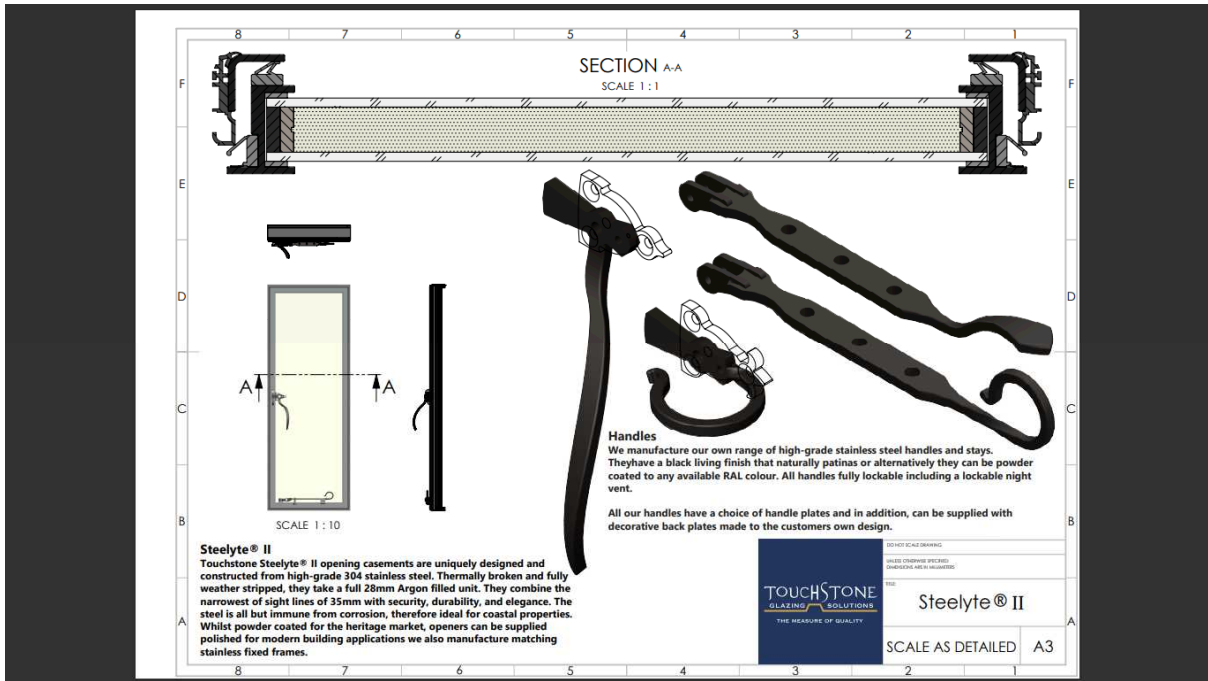




To replace old wooden windows with Touchstone lead framed windows.



Proposed fixed new lead framed windows.



Proposed opening windows.

TOUCHSTONE
GLAZING SOLUTIONS

Albion Crowne Glass

- Our own kiln (*Albion Crowne*) Glass achieves the appearance of traditional hand-blown glass.
- Incorporates reems and seeds, replicating the beauty of historic glass.
- Designed to work seamlessly with our Insulead system and Steelyte casements.
- Can be cut in house to accommodate simple and complex shapes.
- Supplied as standard as 4mm toughened.
- Used as the outer panel on a double-glazed unit, fitting the time-honored look of the building.
- Varying levels of distortion can be produced to match the variability in hand-blown glass.
 - Light Albion Crowne
 - Heavy Albion Crowne

handmade — bespoke — original — tradition — innovative — design — quality — distinct

Albion Mill, Thornhill Beck Lane, Brighouse, West Yorkshire, HD6
4AH | Company Reg No. — 7886469 01488 40023 |
www.touchstoneglazing.co.uk | info@touchstoneglazing.co.uk

Albion crown glass to be used.