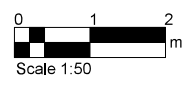


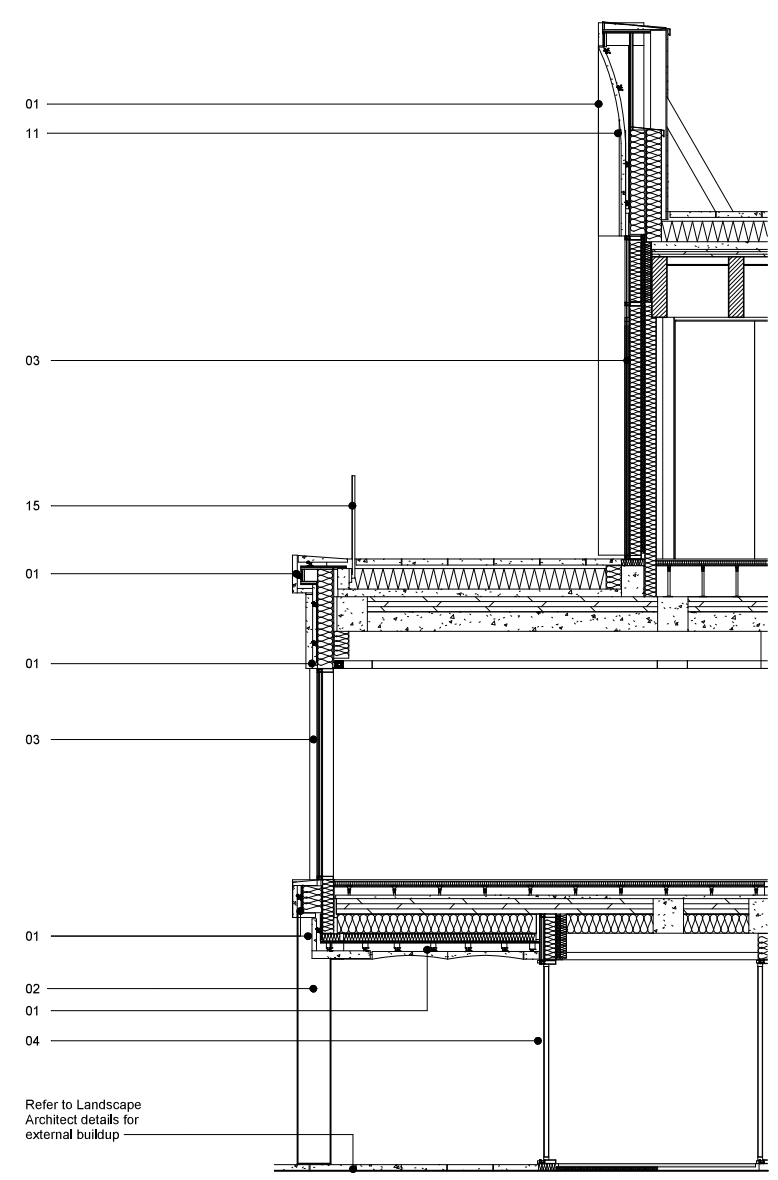
1 Library West Bay Study - Elevation
1 : 50

3 Library West Bay Level 02 - Plan
1 : 50

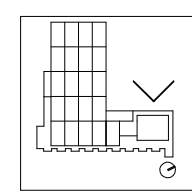
4 Library West Bay Level 01 - Plan
1 : 50



5 Library West Bay Study - Section Copy 1
1 : 50



- Elevation Key and Notes**
1. Precast concrete fascia, profiled panels & coping cladding
 2. Decorative precast concrete columns
 3. Dark metal capped windows and curtain walling system (opaque insulated glazing toned darker grey).
 4. Dark metal capped glazed and solid metal door systems
 5. Decorative metal ventilation and plant screen louvres
 6. Clear glazed balustrade
 7. Replacement of the existing system with new thermally broken curtain wall mounting double glass unit, with integrated single/double doors & windows. (Opaque insulated glazing toned darker grey)
 8. Existing clerestory glazing - New curtain walling to match fenestration and aesthetic of original hung patent glazing
 9. Library glazed louvred window with dark metal outer frame.
 10. Metal canopy
 11. Precast concrete profiled panels
 12. Glazed louvred curtain walling panels to renewed clerestory windows.
 13. Improvement of thermal performance of existing solid facade with additional internal layer of insulation
 14. Curtain Wall System to Food Hall (opaque glazing with solid insulated panels toned darker grey). Double glazed timber stick system with anodised aluminium capping. Integrated Double doors & top hung windows.
 15. Flat Stone rainscreen cladding to match existing
 16. Existing stairs with new metal balustrade with vertical flats
 17. Signage - type and extent tbc by condition
 18. Stone clad door to match existing stone wall
 19. Existing window to be replaced with top hung openable window with timber frame and anodised aluminium capping.
 20. Dark metal perforated roller shutter
- Movement and Bespoke Assemblies- each shell moved independently of its neighbour. Bespoke made movement assemblies will be required at each interface.
- Note, scope of fabric removal/demolition is not shown on these elevations
- Glazed elements (Windows and Doors)
 - Spandrel Panels / Back Painted Glass
 - Louvred / Ventilation Panel
- Dimensions are not to be scaled from this drawing
 - Drawing only to be used for the purposes it was issued for
 - Landscape, public realm and neighbouring buildings shown indicatively
 - Existing locations and footprints of surrounding buildings are taken from; (OS Map - Promap-1634985-1735589-720-0.dwg) received 2021.10.27; (21359-100-Topo-Millimetres.dwg) received from Malby Surveys on 2022.02.23
 - Existing building plans and elevations are based on Malby Surveys drawings received on 2022.02.18 and 2022.03.15



FelldenCleggBradleyStudios
LLP

London Office
Tottenham Street
London
W1T 4RG

t +44 20 7323 5737
e london@fcbstudios.com

Rev	Status	Date
P01	S2 Issued for Planning and Listed Building Consent Approval	30/09/22
P02	S2 Issued for Planning and Listed Building Consent Approval	01/12/22

Job/Drawing No	Revision
IR430301-FCB-XX-XX-DR-A-040900	P02
Kirklees Cultural Heart	Status
Huddersfield Library - Proposed West External Bay Study 01	S2
Scale As indicated@A1	FCBS project
Date 30/09/22	no IR430301
Drawn London Studio	
Checked London Studio	
Do not scale All dimensions to be checked on site	