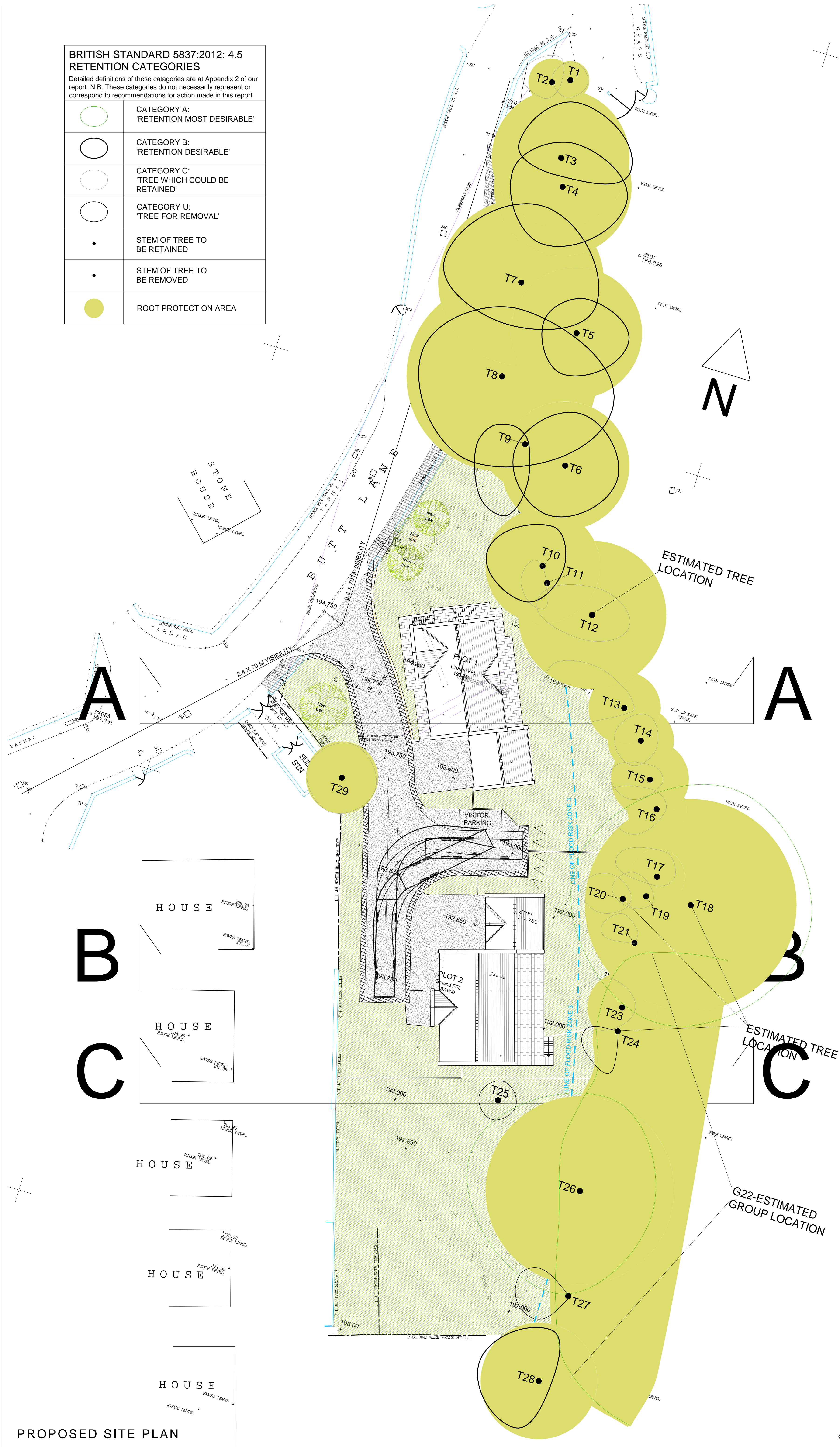


BRITISH STANDARD 5837:2012: 4.5  
RETENTION CATEGORIES

Detailed definitions of these categories are at Appendix 2 of our report. N.B. These categories do not necessarily represent or correspond to recommendations for action made in this report.

|  |  |
|--|--|
|  | CATEGORY A:<br>'RETENTION MOST DESIRABLE'        |
|  | CATEGORY B:<br>'RETENTION DESIRABLE'             |
|  | CATEGORY C:<br>'TREE WHICH COULD BE<br>RETAINED' |
|  | CATEGORY U:<br>'TREE FOR REMOVAL'                |
|  | STEM OF TREE TO<br>BE RETAINED                   |
|  | STEM OF TREE TO<br>BE REMOVED                    |
|  | ROOT PROTECTION AREA                             |



PLANNING

REV G: Plot 3 omitted following LPA feedback. JF 05.09.18

REV F: Plot 2 repositioned to conform to BE12. Plot 1 rotated away from root protection area. JF 22.08.18

REV E: All trees under TPO to be retained. JF 18.07.18

REV D: Plot 3 reverted to previous house type. Line of flood risk shown dashed, tree survey overlaid. JF 16.07.18

REV C: 2M Footway added as shown on outline permission. JF 08.06.18

REV B: Change of house type to plot 3 with appropriate landscape changes based on its design. OT 04.06.18

REV A: Plot 4 omitted, new house type for plot 3 added, plot 1 and 2 moved following away from TPO trees. JF 06.03.18

Revision:

**acumen**  
designers & architects  
acumenarchitects.co.uk 01484 546000  
Headrow House, Old Leeds Road, Huddersfield, HD1 1SG

|                 |  |
|-----------------|--|
| CLIENT:         | ACUMEN   |
| JOB TITLE:      | LAND OFF BUTT LANE<br>HEPWORTH<br>HUDDERSFIELD |
| DRAWING TITLE:  | PROPOSED SITE PLAN                             |
| DRAWN: JF       | DATE: SEP '17                                  |
| CHECKED: JC     | SCALE: 1:200 @ A1                              |
| DRAWING NUMBER: | 2397 - 03G                                     |