

| Shrubs | | | | | |
|---------|--------------|-----------------------------------|---------|---------------|------------------|
| Number | Abbreviation | Species | Height | Specification | Density |
| 16 No. | Ctr | Ceanothus thyrsiflorus repens | 30-40cm | 3L pot | 4/m ² |
| 158 No. | EFSQ | Euonymus fortunei 'Silver Queen' | 30-40cm | 3L pot | 4/m ² |
| 161 No. | Lav Mun | Lavandula angustifolia 'Munstead' | 30-40cm | 3L pot | 4/m ² |
| 11 No. | Mah Ap | Mahonia aquifolium 'Apollo' | 30-40cm | 3L pot | 4/m ² |
| 130 No. | POG | Pyracantha 'Orange Glow' | 40-60cm | 3L pot | 3/m ² |
| 19 No. | SoP | Salvia officinalis 'Purpurascens' | 30-40cm | 3L pot | 4/m ² |
| 102 No. | Santo ch N | Santolina chamaecyparissus 'Nana' | 20-30cm | 3L pot | 5/m ² |
| 66 No. | Sk Rub | Skimmia japonica 'Rubella' | 30-40cm | 3L pot | 4/m ² |
| 59 No. | V min Al | Vinca minor 'Alba' | 20-30cm | 2L pot | 5/m ² |

| Herbaceous | | | | |
|------------|--------------|------------------------------------|---------------|------------------|
| Number | Abbreviation | Species | Specification | Density |
| 22 No. | Alys sax | Alyssum saxatile | 9cm pot | 5/m ² |
| 21 No. | As PB | Astilbe 'Peach Blossom' | 9cm pot | 5/m ² |
| 17 No. | Aub LC | Aubrieta 'Lavender Cascade' | 9cm pot | 5/m ² |
| 13 No. | Th cit AG | Thymus citriodorus 'Archer's Gold' | 9cm pot | 6/m ² |

| Marginal / Aquatics | | | | |
|---------------------|--------------|-------------------|---------------|------------------|
| Number | Abbreviation | Species | Specification | Density |
| 15 No. | lr ps | Iris pseudacorus | 9cm pot | 5/m ² |
| 23 No. | Lyth sal | Lythrum salicaria | 9cm pot | 5/m ² |

| Gravel plants mix | | | | | |
|-------------------|--------------|--------------------------------|---------------|------------------|--------|
| Number | Abbreviation | Species | Specification | Density | Weight |
| 6 No. | ArBG | Ajuga reptans 'Burgundy Glow' | 9cm pot | 2/m ² | |
| 6 No. | Aq RP | Aquilegia vulgaris 'Ruby Port' | 9cm pot | 2/m ² | |
| 6 No. | Ger sA | Geranium sanguineum 'Album' | 9cm pot | 2/m ² | |
| 8 No. | Luz niv | Luzula nivea | 9cm pot | 2/m ² | |
| 8 No. | PaS | Persicaria affinis 'Superba' | 9cm pot | 2/m ² | |
| 6 No. | SEDACA | Sedum acre aureum | 9cm pot | 2/m ² | |
| Total :40 No. | | | | | |

PREPARATION AND PLANTING
 All plant material shall conform to BS3936 Parts 1 and 4 and BS 4428.
 Topsoil to comply with BS3882, 2015.
 Organic matter to be proprietary shrub planting compost, or approved compost derived from recycled organic matter.
 Slow release fertiliser to be 'Enmag' or similar.

Shrub planting.
 1 Shrubs to be planted into 400mm depth of high quality topsoil complying with BS3882, 1994.
 2 Organic matter to be spread over planting area and cultivated into soil to a min 400mm depth.
 3 Shrubs to be planted into prepared soil in pits large enough to accommodate full rootball.
 4 Finished beds to be lightly forked over and dressed with 50mm depth of coarse forest bark mulch, or 50mm gravel.

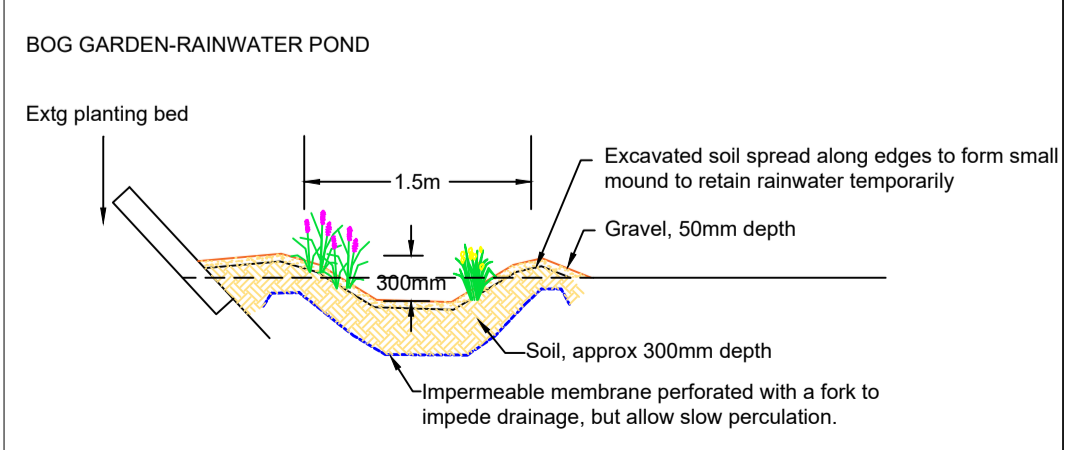
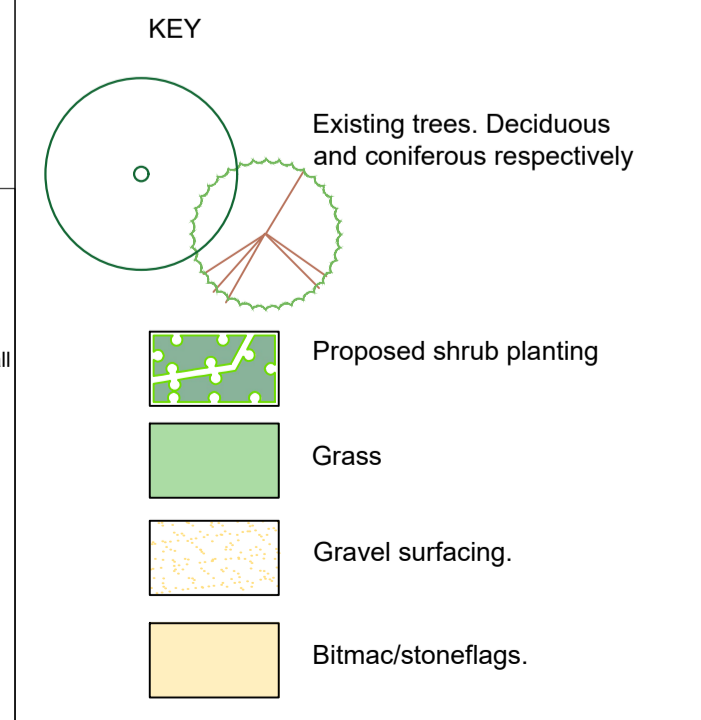
Herbaceous planting into gravel
 1. Existing gravel to be removed and saved for re-use.
 2. Excavate to 300mm depth, then spread 300mm depth topsoil.
 3. Lay weed suppressant membrane over cultivated soil.
 4. Plants to be notch planted into soil through membrane. Plant @ 250mm centres in small groups of 3-6, each group approx 300-750mm apart.
 5. Finished area to be dressed with 50mm depth gravel.

PHASING
 All container grown shrubs, herbaceous and emergent/aquatic plants to be planted in the first March/April after completion of construction.

AFTERCARE - 5 YEARS
 Shrubs, herbaceous, emergent/aquatic plants
 1 Keep all shrub and gravel areas free from weeds by hand pulling or spot treatment with a translocated herbicide.
 2 Replace plants that die or fail to thrive, annually.
 3 Top up mulch annually.
 4 Trim all shrubs along the edges of footpaths after flowering, to encourage bushiness and keep paths clear.
 5 Cut back herbaceous species in March.

Watering
 In years 1-3, water plants in periods of prolonged dry weather, approx 10 litres per plant.
 Watering to be undertaken in early morning or evening, avoiding periods of bright sunshine or windy conditions.

Rev A. 2 Jun 19. Amends to garden areas to correspond with architects amended dwg of 13/5/19



CP Landscape
 179 High Moor Road, Tingley, Wakefield, West Yorkshire, WF3 1RE
 TEL: 0113 251 5200 email: sales@cplandscape.co.uk

Client: **San Pedro Properties**

Project: **Development at Highfields New North Road Huddersfield**

Drawing title: **Landscape proposals**

Scale: 1:200 @ A1 Date: Nov 18 Drawn by: CTF Drawing no: SPP/H/541/1a