

S p a c e

architecture and design limited

Park Bottom
Litton
Skipton
BD23 5QJ

e: md@spacearchitecture.net
w: www.spacearchitecture.net

Window and External Door Schedule

Conversion of Former College Buildings to

Residential Apartments

Highfields

New North Road

Huddersfield HD1 5LS

This Schedule to be read in conjunction with the following drawings:

18.007(2-)001 / 18.007(2-)002 / 18.007(2-)003 / 18.007(2-)004 / 18.007(2-)005 / 18.007(2-)011 /18.007(2-)012 /18.007(2-)013 /18.007(2-)014 / 18.007(2-)015.

Preamble.

The current windows were installed in the 1920s

The whole of the exterior was decorated in 2019

Repairs have been ongoing since 2018.

Generally, the existing windows are in a good state of repair and require only to be repainted and opening lights to be eased and made fully operational

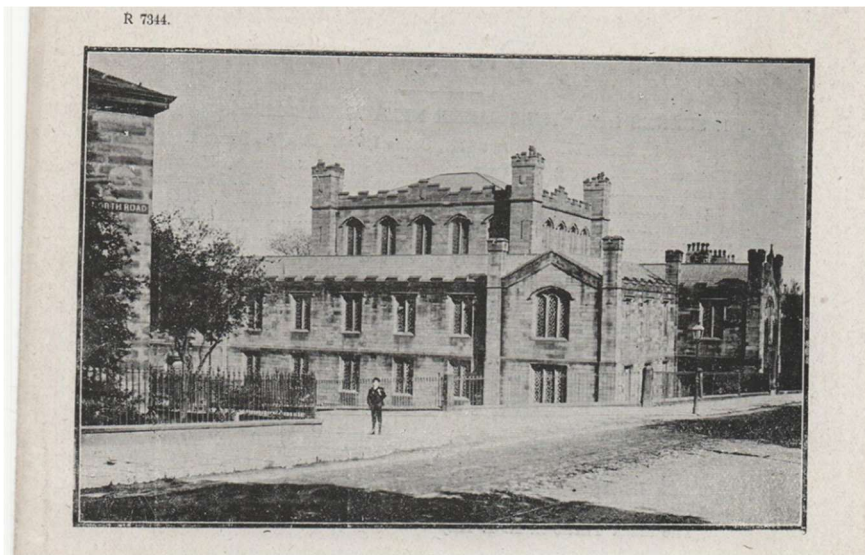


Image from 1919

General location	Ref.	Type	Existing condition	Schedule of work required	Additional notes
Main Building					
2 nd floor	w2.01	A	good	To be repainted Diamond shaped opener repaired, eased and made operational	
2 nd floor	w2.02	A	good	To be repainted Diamond shaped opener repaired, eased and made operational	
2 nd floor	w2.03	A	good	To be repainted Diamond shaped opener repaired, eased and made operational	
2 nd floor	w2.04	A	good	To be repainted Diamond shaped opener repaired, eased and made operational	
2 nd floor	w2.05	A	good	To be repainted Diamond shaped opener repaired, eased and made operational	
2 nd floor	w2.06	A	good	To be repainted Diamond shaped opener repaired, eased and made operational	
2 nd floor	w2.07	A	good	To be repainted Diamond shaped opener repaired, eased and made operational	
2 nd floor	w2.08	A	good	To be repainted Diamond shaped opener repaired, eased and made operational	
2 nd floor	w2.09	A	good	To be repainted Diamond shaped opener repaired, eased and made operational	
2 nd floor	w2.10	A	good	To be repainted Diamond shaped opener repaired, eased and made operational	
2 nd floor	w2.11	A	good	To be repainted Diamond shaped opener repaired, eased and made operational	
2 nd floor	w2.12	A	good	To be repainted Diamond shaped opener repaired, eased and made operational	
2 nd floor	w2.01	A	good	To be repainted Diamond shaped opener repaired, eased and made operational	
2 nd floor	w2.13	A	good	To be repainted Diamond shaped opener repaired, eased and made operational	
2 nd floor	w2.14	A	good	To be repainted Diamond shaped opener repaired, eased and made operational	
2 nd floor	w2.15	A	good	To be repainted Diamond shaped opener repaired, eased and made operational	
2 nd floor	w2.16	A	good	To be repainted Diamond shaped opener repaired, eased and made operational	
2 nd floor	w2.17	A	good	To be repainted Diamond shaped opener repaired, eased and made operational	
2 nd floor	w2.18	A	good	To be repainted Diamond shaped opener repaired, eased and made operational	

General location	Ref.	Type	Existing condition	Schedule of work required	Additional notes
2 nd floor	w2.19	A	good	To be repainted Diamond shaped opener repaired, eased and made operational	
2 nd floor	w2.20	A	good	To be repainted Diamond shaped opener repaired, eased and made operational	

General location	Ref.	Type	Existing condition	Schedule of work required	Additional notes
Main Building					
1st floor	w1.01	B	good	To be repainted Rectangular side hung opener repaired, eased and made operational. Ironmongery renewed.	
1st floor	w1.02	B	good	To be repainted Rectangular side hung opener repaired, eased and made operational. Ironmongery renewed.	
1st floor	w1.03	B	good	To be repainted Rectangular side hung opener repaired, eased and made operational. Ironmongery renewed.	
1st floor	w1.04	B	good	To be repainted Rectangular side hung opener repaired, eased and made operational. Ironmongery renewed.	
1st floor	w1.05	B	good	To be repainted Rectangular side hung opener repaired, eased and made operational. Ironmongery renewed.	
1st floor	w1.06	B	good	To be repainted Rectangular side hung opener repaired, eased and made operational. Ironmongery renewed.	
1st floor	w1.07	B	good	To be repainted Rectangular side hung opener repaired, eased and made operational. Ironmongery renewed.	
1st floor	w1.08	B	good	To be repainted Rectangular side hung opener repaired, eased and made operational. Ironmongery renewed.	
1st floor	w1.09	J	good	To be repainted Rectangular side hung opener repaired, eased and made operational. Ironmongery renewed.	
1st floor	w1.10	D	good	To be repainted Rectangular side hung opener repaired, eased and made operational. Ironmongery renewed.	
1st floor	w1.11	B	good	To be repainted Rectangular side hung opener repaired, eased and made operational. Ironmongery renewed.	
1st floor	w1.12	D	good	To be repainted Rectangular side hung opener repaired, eased and made operational. Ironmongery renewed.	
1st floor	w1.13	B	good	To be repainted Rectangular side hung opener repaired, eased and made operational. Ironmongery renewed.	
1st floor	w1.14	D	good	To be repainted Rectangular side hung opener repaired, eased and made operational. Ironmongery renewed.	
1st floor	w1.15	J	good	To be repainted Rectangular side hung opener repaired, eased and made operational. Ironmongery renewed.	
1st floor	w1.16	B	good	To be repainted Rectangular side hung opener repaired, eased and made operational. Ironmongery renewed.	
1st floor	w1.17	D	good	To be repainted Rectangular side hung opener repaired, eased and made operational. Ironmongery renewed.	

General location	Ref.	Type	Existing condition	Schedule of work required	Additional notes
1st floor	w1.18	B	good	To be repainted Rectangular side hung opener repaired, eased and made operational. Ironmongery renewed.	
1st floor	w1.19	N	good	To be repainted Rectangular side hung opener repaired, eased and made operational. Ironmongery renewed.	
1st floor	w1.20	E	good	To be repainted Rectangular side hung opener repaired, eased and made operational. Ironmongery renewed.	
1st floor	w1.21	N	good	To be repainted Rectangular side hung opener repaired, eased and made operational. Ironmongery renewed.	
1st floor	w1.22	B	good	To be repainted Rectangular side hung opener repaired, eased and made operational. Ironmongery renewed.	
1st floor	w1.23	D	good	To be repainted Rectangular side hung opener repaired, eased and made operational. Ironmongery renewed.	
1st floor	w1.24	B	good	To be repainted Rectangular side hung opener repaired, eased and made operational. Ironmongery renewed.	
1st floor	w1.25	J	good	To be repainted Rectangular side hung opener repaired, eased and made operational. Ironmongery renewed.	
1st floor	w1.26	C	good	To be repainted Rectangular side hung opener repaired, eased and made operational. Ironmongery renewed.	
1st floor	w1.27	K	good	To be repainted Rectangular side hung opener repaired, eased and made operational. Ironmongery renewed.	
1st floor	w1.28	C	good	To be repainted Rectangular side hung opener repaired, eased and made operational. Ironmongery renewed.	
1st floor	w1.29	K	good	To be repainted Rectangular side hung opener repaired, eased and made operational. Ironmongery renewed.	
1st floor	w1.30	C	good	To be repainted Rectangular side hung opener repaired, eased and made operational. Ironmongery renewed.	
1st floor	w1.31	J	good	To be repainted Rectangular side hung opener repaired, eased and made operational. Ironmongery renewed.	

General location	Ref.	Type	Existing condition	Schedule of work required	Additional notes
Main Building					
Ground floor	wg.01	G	n/a	Existing non original, relatively modern glass door and side lights removed Replaced with re-configured hardwood and glass screens retained from the interior. All timber components re-painted to match windows elsewhere	
Ground floor	w1.02	G	n/a	Existing non original, relatively modern glass door and side lights removed Replaced with re-configured hardwood and glass screens retained from the interior. All timber components re-painted to match windows elsewhere	
Ground floor	wg.03	G	n/a	Existing non original, relatively modern glass door and side lights removed Replaced with re-configured hardwood and glass screens retained from the interior. All timber components re-painted to match windows elsewhere	
Ground floor	wg.04	G	n/a	Existing non original, relatively modern glass door and side lights removed Replaced with re-configured hardwood and glass screens retained from the interior. All timber components re-painted to match windows elsewhere	
Ground floor	wg.05	G	n/a	Existing non original, relatively modern glass door and side lights removed Replaced with re-configured hardwood and glass screens retained from the interior. All timber components re-painted to match windows elsewhere	
Ground floor	w1.06	G	n/a	Existing non original, relatively modern glass door and side lights removed Replaced with re-configured hardwood and glass screens retained from the interior. All timber components re-painted to match windows elsewhere	
Ground floor	wg.07	G	n/a	Existing non original, relatively modern glass door and side lights removed Replaced with re-configured hardwood and glass screens retained from the interior. All timber components re-painted to match windows elsewhere	
Ground floor	wg.08	G	n/a	Existing non original, relatively modern glass door and side lights removed Replaced with re-configured hardwood and glass screens retained from the interior. All timber components re-painted to match windows elsewhere	
Ground floor	wg.09	H	good	Existing non original, relatively modern glass door and side lights retained	
Ground floor	wg.10	L	good	To be repainted Rectangular side hung and bottom openers repaired, eased and made operational. Ironmongery renewed.	
Ground floor	dg.01	n/a	good	Existing non original, relatively modern glass door and fanlight retained	
Ground floor	wg.11	L	good	To be repainted Rectangular side hung and bottom openers repaired, eased and made operational. Ironmongery renewed.	
Ground floor	wg.12	C	good	To be repainted Rectangular side hung and bottom openers repaired, eased and made operational. Ironmongery renewed.	
Ground floor	wg.13	L	good	To be repainted Rectangular side hung and bottom openers repaired, eased and made operational. Ironmongery renewed.	
Ground floor	wg.14	L	good	To be repainted Rectangular side hung and bottom openers repaired, eased and made operational. Ironmongery renewed.	

General location	Ref.	Type	Existing condition	Schedule of work required	Additional notes
Ground floor	wg.15	C	good	To be repainted Rectangular side hung and bottom openers repaired, eased and made operational. Ironmongery renewed.	
Ground floor	wg.16	L	good	To be repainted Rectangular side hung and bottom openers repaired, eased and made operational. Ironmongery renewed.	
Ground floor	wg.17	C	good	To be repainted Rectangular side hung and bottom openers repaired, eased and made operational. Ironmongery renewed.	
Ground floor	dg.02	n/a	good	To be repainted. Ironmongery renewed. Fire escape ironmongery added internally	
Ground floor	wg.17.a	F	good	To be repainted	
Ground floor	dg.03	n/a	good	To be repainted. Ironmongery renewed. Fire escape ironmongery added internally	
Ground floor	wg.17.b	F	good	To be repainted	
Ground floor	dg.04	n/a	good	To be repainted. Ironmongery renewed. Fire escape ironmongery added internally	
Ground floor	wg.18	C	good	To be repainted Rectangular side hung and bottom openers repaired, eased and made operational. Ironmongery renewed.	
Ground floor	wg.19	L	good	To be repainted Rectangular side hung and bottom openers repaired, eased and made operational. Ironmongery renewed.	
Ground floor	wg.20	C	good	To be repainted Rectangular side hung and bottom openers repaired, eased and made operational. Ironmongery renewed.	
Ground floor	wg.21	L	good	To be repainted Rectangular side hung and bottom openers repaired, eased and made operational. Ironmongery renewed	
Ground floor	w1.22	C	good	To be repainted Rectangular side hung and bottom openers repaired, eased and made operational. Ironmongery renewed	
Ground floor	wg.23	L	good	To be repainted Rectangular side hung and bottom openers repaired, eased and made operational. Ironmongery renewed	
Ground floor	wg.24	C	good	To be repainted Rectangular side hung and bottom openers repaired, eased and made operational. Ironmongery renewed	
Ground floor	wg.25	L	good	To be repainted Rectangular side hung and bottom openers repaired, eased and made operational. Ironmongery renewed	
Ground floor	w1.26	C	good	To be repainted Rectangular side hung and bottom openers repaired, eased and made operational.	

General location	Ref.	Type	Existing condition	Schedule of work required	Additional notes
				Ironmongery renewed	
Ground floor	wg.27	H	good	Existing non original, relatively modern glass door and side lights retained	

General location	Ref.	Type	Existing condition	Schedule of work required	Additional notes
Building B					
1st floor	wb1.01	A	good	To be repainted Sashes eased, weights / springs adjusted as required. Weatherseals added/renewed as required	
1st floor	wb1.02	A	good	To be repainted Sashes eased, weights / springs adjusted as required. Weatherseals added/renewed as required	
1st floor	wb1.03	A	good	To be repainted Sashes eased, weights / springs adjusted as required. Weatherseals added/renewed as required	
1st floor	wb1.04	B	good	To be repainted	
1st floor	wb1.05	A	good	To be repainted Sashes eased, weights / springs adjusted as required. Weatherseals added/renewed as required	
1st floor	wb1.06	A	good	To be repainted Sashes eased, weights / springs adjusted as required. Weatherseals added/renewed as required	
1st floor	wb1.07	A	good	To be repainted Sashes eased, weights / springs adjusted as required. Weatherseals added/renewed as required	
1st floor	wb1.08	A	good	To be repainted Sashes eased, weights / springs adjusted as required. Weatherseals added/renewed as required	
1st floor	wb1.09	A	good	To be repainted Sashes eased, weights / springs adjusted as required. Weatherseals added/renewed as required	
1st floor	wb1.10	A	good	To be repainted. Existing blacked out glazing to be replace with new clear (slimline dg) units Sashes eased, weights / springs adjusted as required. Weatherseals added/renewed as required	
1st floor	wb1.11	C	n/a	New window.	
1st floor	wb1.12	C	n/a	New window.	
1st floor	wb1.13	D	V.poor	New window. All frame and profiles to match adj. retained window w1.14	
1st floor	wb1.14	D	good	To be repainted Sashes eased, weights / springs adjusted as required.	

General location	Ref.	Type	Existing condition	Schedule of work required	Additional notes
				Weatherseals added/renewed as required	
1st floor	wb1.15	E	good	To be repainted Sashes eased, weights / springs adjusted as required. Weatherseals added/renewed as required	
1st floor	wb1.16	F	good	To be repainted	
1st floor	wb1.17	E	good	To be repainted Sashes eased, weights / springs adjusted as required. Weatherseals added/renewed as required	
1st floor	wb1.14	D	good	To be repainted Sashes eased, weights / springs adjusted as required. Weatherseals added/renewed as required	
Ground floor	wbg.01	A	good	To be repainted Sashes eased, weights / springs adjusted as required. Weatherseals added/renewed as required	
Ground floor	wbg.02	A	good	To be repainted Sashes eased, weights / springs adjusted as required. Weatherseals added/renewed as required	
Ground floor	wbg.03	A	good	To be repainted Sashes eased, weights / springs adjusted as required. Weatherseals added/renewed as required	
Ground floor	wbg.04	B	good	To be repainted	
Ground floor	wbg.05.a	G	good	Sashes eased, weights / springs adjusted as required. Weatherseals added/renewed as required	
Ground floor	wbg.05.b	G	good	To be repainted Sashes eased, weights / springs adjusted as required. Weatherseals added/renewed as required	
Ground floor	wbg.05.c	G	good	To be repainted Sashes eased, weights / springs adjusted as required. Weatherseals added/renewed as required	
Ground floor	dbg.01	n/a	n/a	New Georgian style door to replace narrow pair of doors – refer to elevations Pannelled and fielded Fanlight over.	
Ground floor	wbg.06	A	good	To be repainted Sashes eased, weights / springs adjusted as required. Weatherseals added/renewed as required	
Ground floor	dbg.02	n/a	n/a	New Georgian style door to replace narrow pair of doors – refer to elevations Pannelled and fielded Fanlight over.	
Ground floor	wbg.07	A	good	To be repainted Sashes eased, weights / springs adjusted as required. Weatherseals added/renewed as required	
Ground floor	wbg.08	A	good	To be repainted. Existing blacked out glazing to be replace with new clear (slimline dg) units Sashes eased, weights / springs adjusted as required.	

General location	Ref.	Type	Existing condition	Schedule of work required	Additional notes
				Weatherseals added/renewed as required	
Ground floor	Wbg.09	C	n/a	New window.	
Ground floor	dbg.02	n/a	n/a	New Georgian style door to replace existing internal door– refer to elevations Pannelled and fielded Fanlight over.	
Ground floor	wbg.10	D	good	To be repainted Sashes eased, weights / springs adjusted as required. Weatherseals added/renewed as required	
Ground floor	wbg.11	D	good	To be repainted Sashes eased, weights / springs adjusted as required. Weatherseals added/renewed as required	
Ground floor	wbg.12.a	G	good	To be repainted Sashes eased, weights / springs adjusted as required. Weatherseals added/renewed as required	
Ground floor	wbg.12.b	G	good	To be repainted Sashes eased, weights / springs adjusted as required. Weatherseals added/renewed as required	
Ground floor	wbg.12.b	G	good	To be repainted Sashes eased, weights / springs adjusted as required. Weatherseals added/renewed as required	
Ground floor	dbg.04	n/a	fair	To be repainted Weather mpoulding to be replaced New escape ironmongery to inside.	
Ground floor	wbg.13	D	good	To be repainted Sashes eased, weights / springs adjusted as required. Weatherseals added/renewed as required	
Ground floor	wbg.14	D	good	To be repainted Sashes eased, weights / springs adjusted as required. Weatherseals added/renewed as required	
Ground floor	wbg.14	D	good	To be repainted Sashes eased, weights / springs adjusted as required. Weatherseals added/renewed as required Internal shutters to be refurbished and repainted	
Ground floor	wbg.15	G	good	To be repainted Sashes eased, weights / springs adjusted as required. Weatherseals added/renewed as required Internal shutters to be refurbished and repainted	

General location	Ref.	Type	Existing condition	Schedule of work required	Additional notes
Link Building					
Ground floor	wg.l.01	A	n/a	New window ppc alu – refer to elevations	
Ground floor	wg.l.02	B	n/a	New window ppc alu – refer to elevations	
Ground floor	wg.l.03	B	n/a	New window ppc alu – refer to elevations Glazed door with full height glazed panel to side	
Ground floor	dg.l.01	n/a	n/a	New solid timber door (to give access to boiler room)	
First Floor	w1.l.01	A	n/a	New window ppc alu – refer to elevations	
First Floor	w1.l.02	B	n/a	New window ppc alu – refer to elevations	
First Floor	w1.l.03	B	n/a	New window ppc alu set into dormer– refer to elevations	

General location	Ref.	Type	Existing condition	Schedule of work required	Additional notes
Link Tower Building					
Ground floor	dg.lt.01	n/a	n/a	New glazed door ppc alu – refer to elevations	
Lower Ground floor	wg.lt.01	A	n/a	New window ppc alu – refer to elevations	
Upper Ground floor	wug.lt.01	A	n/a	New window ppc alu – refer to elevations	
First floor	w1.lt.01	A	n/a	New window ppc alu – refer to elevations	