

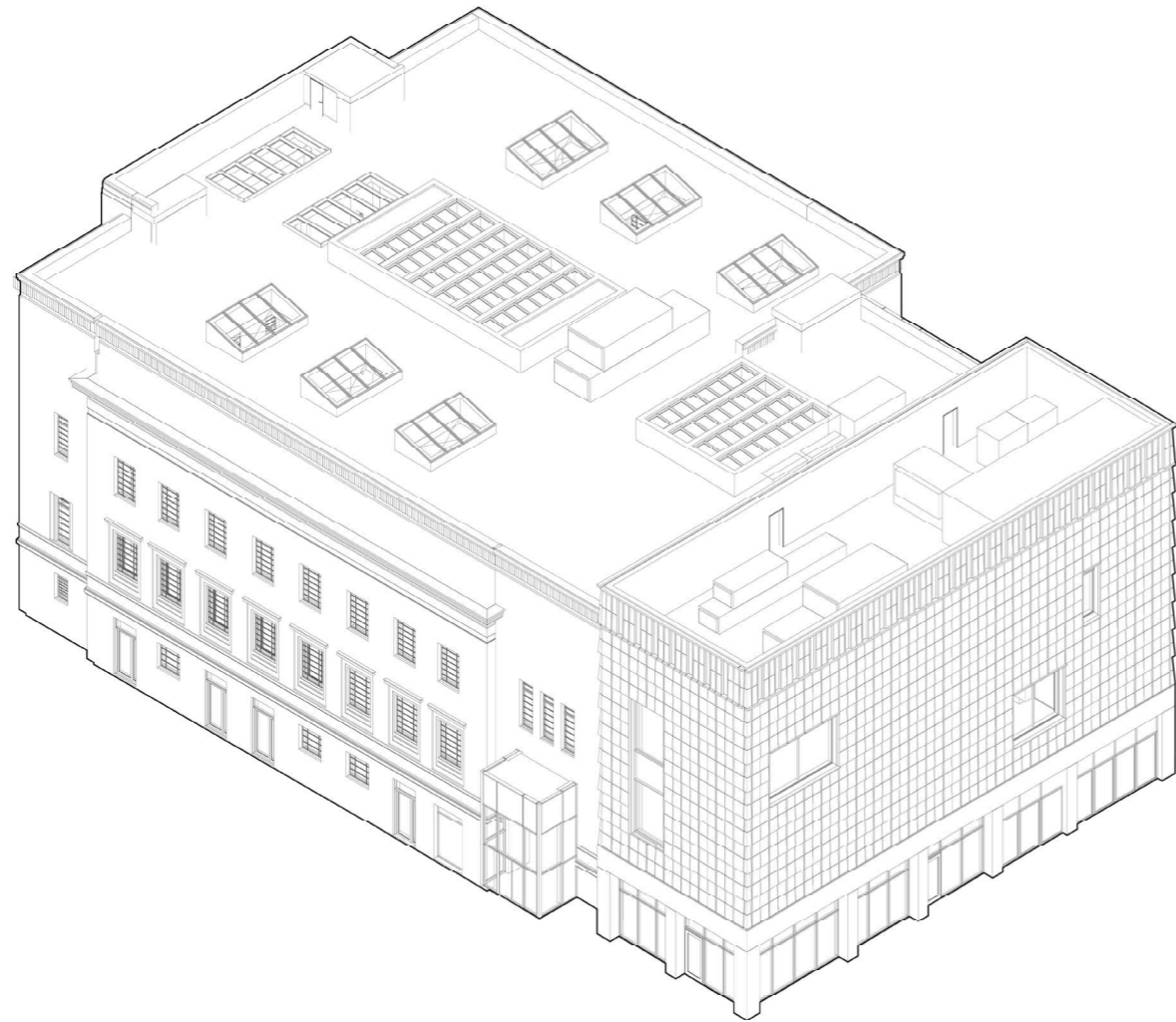


KIRKLEES CULTURAL HEART

Proposed Planning
Amendments and Further
Detail of Submitted Design

MUSEUM

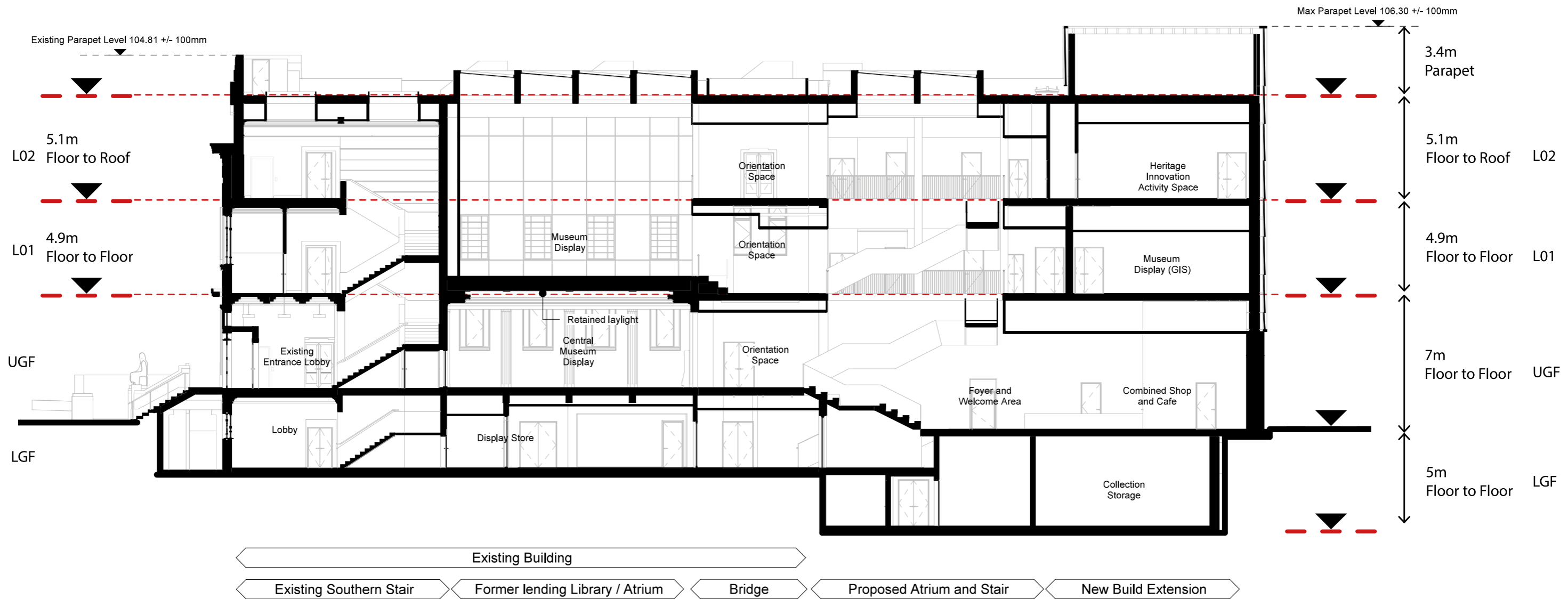
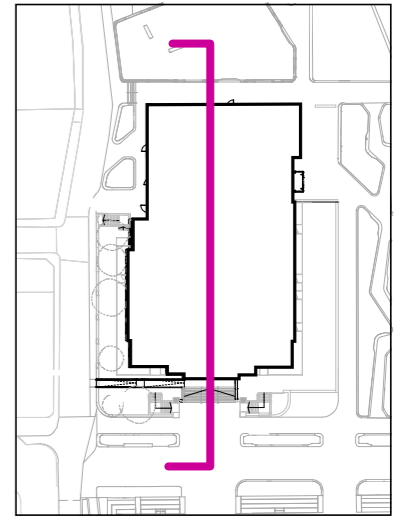
MUSEUM CONTENTS



- Height of Extension
- Western Infill Elevation

MUSEUM

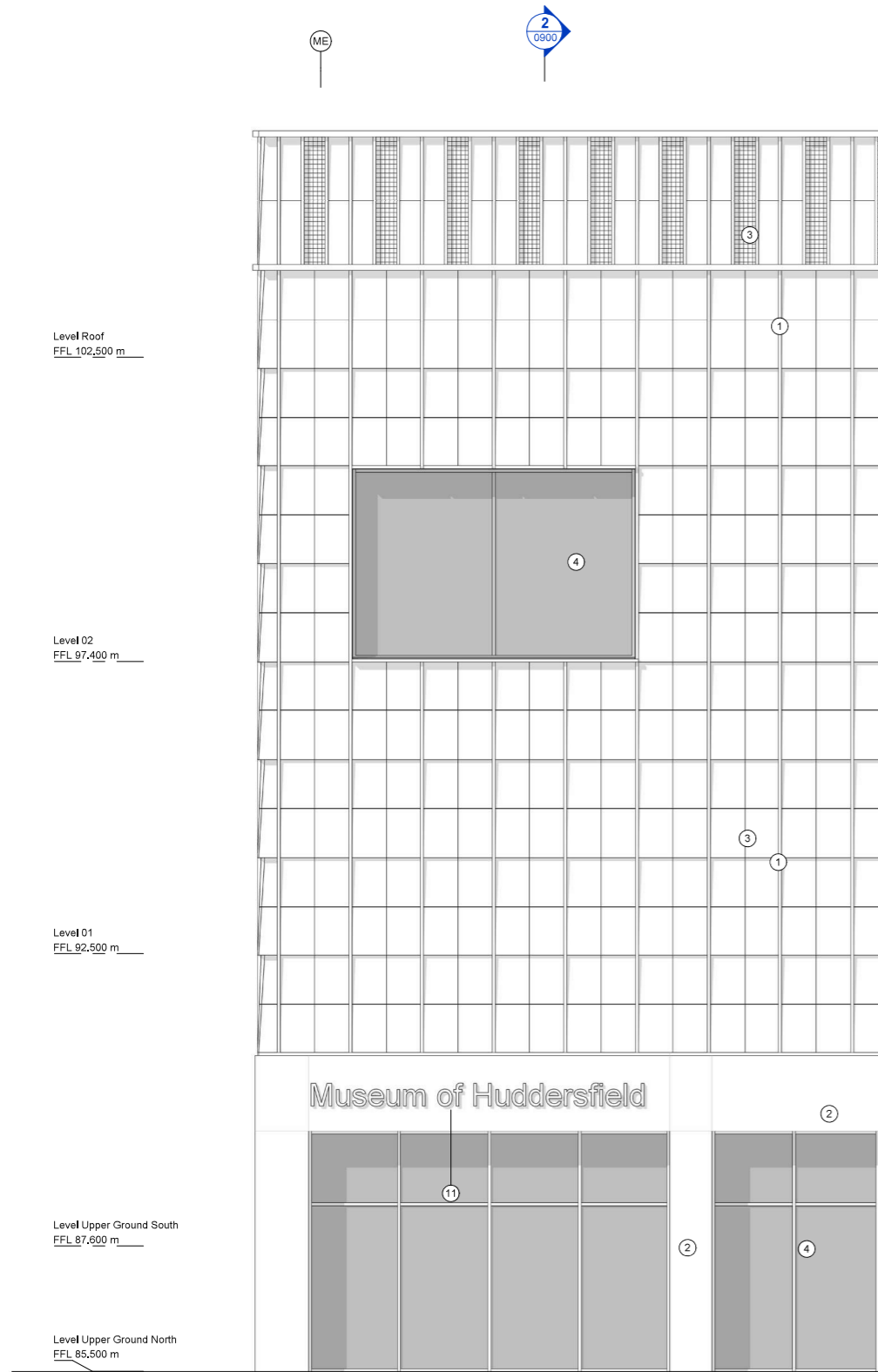
HEIGHT OF EXTENSION



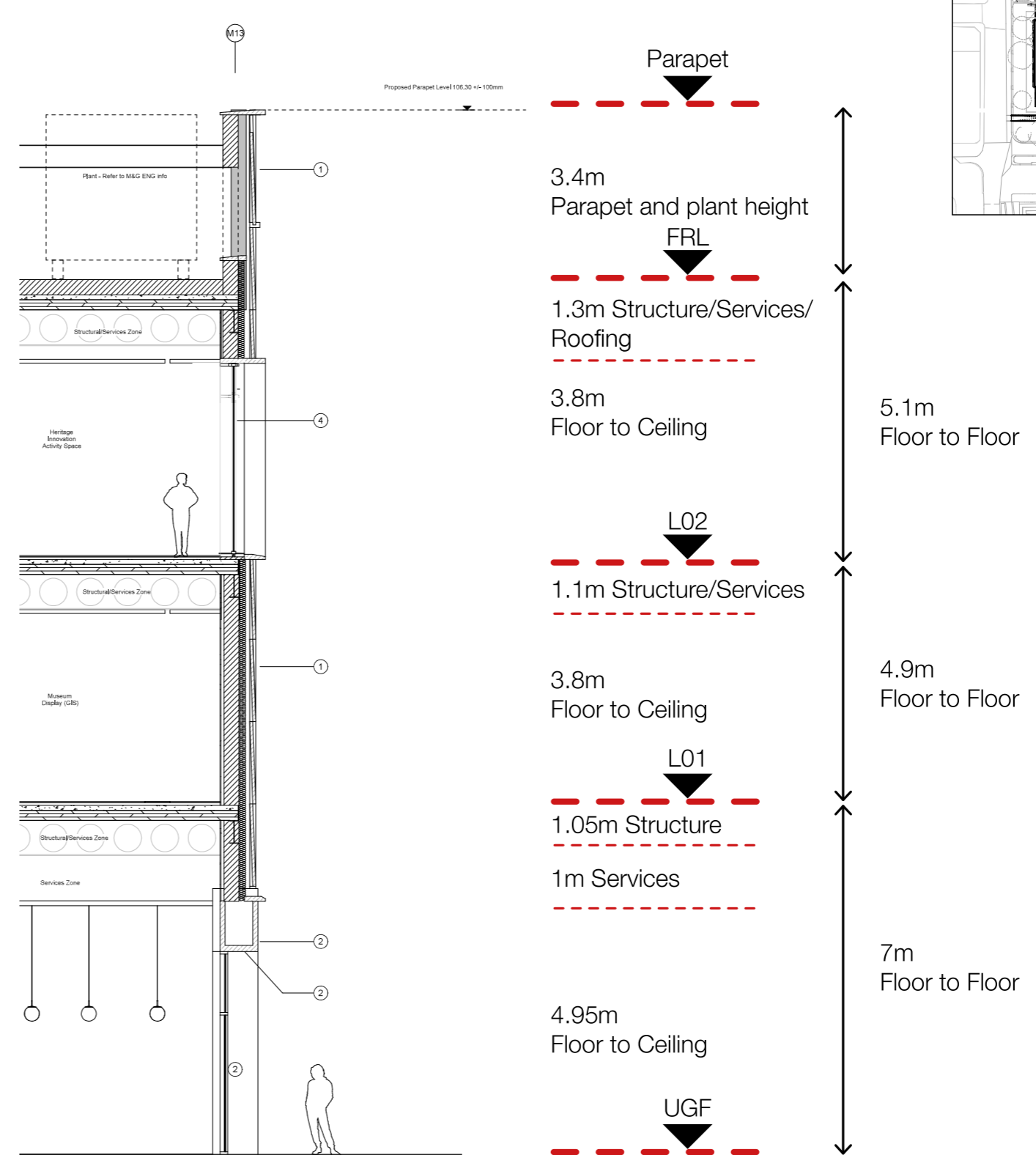
PROPOSED EXTENSION ALIGNING WITH EXISTING FLOOR LEVEL CONSTRAINTS

MUSEUM

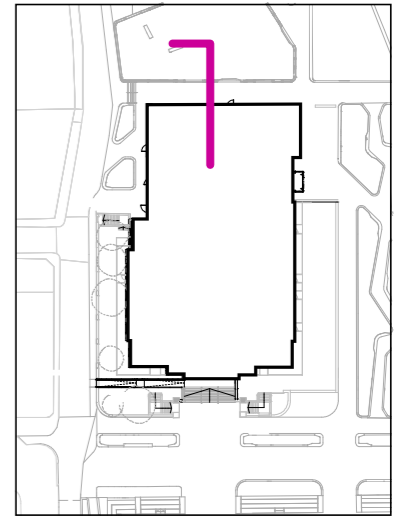
HEIGHT OF EXTENSION



1 Bay Study - Museum Extension North Elevation
1:50



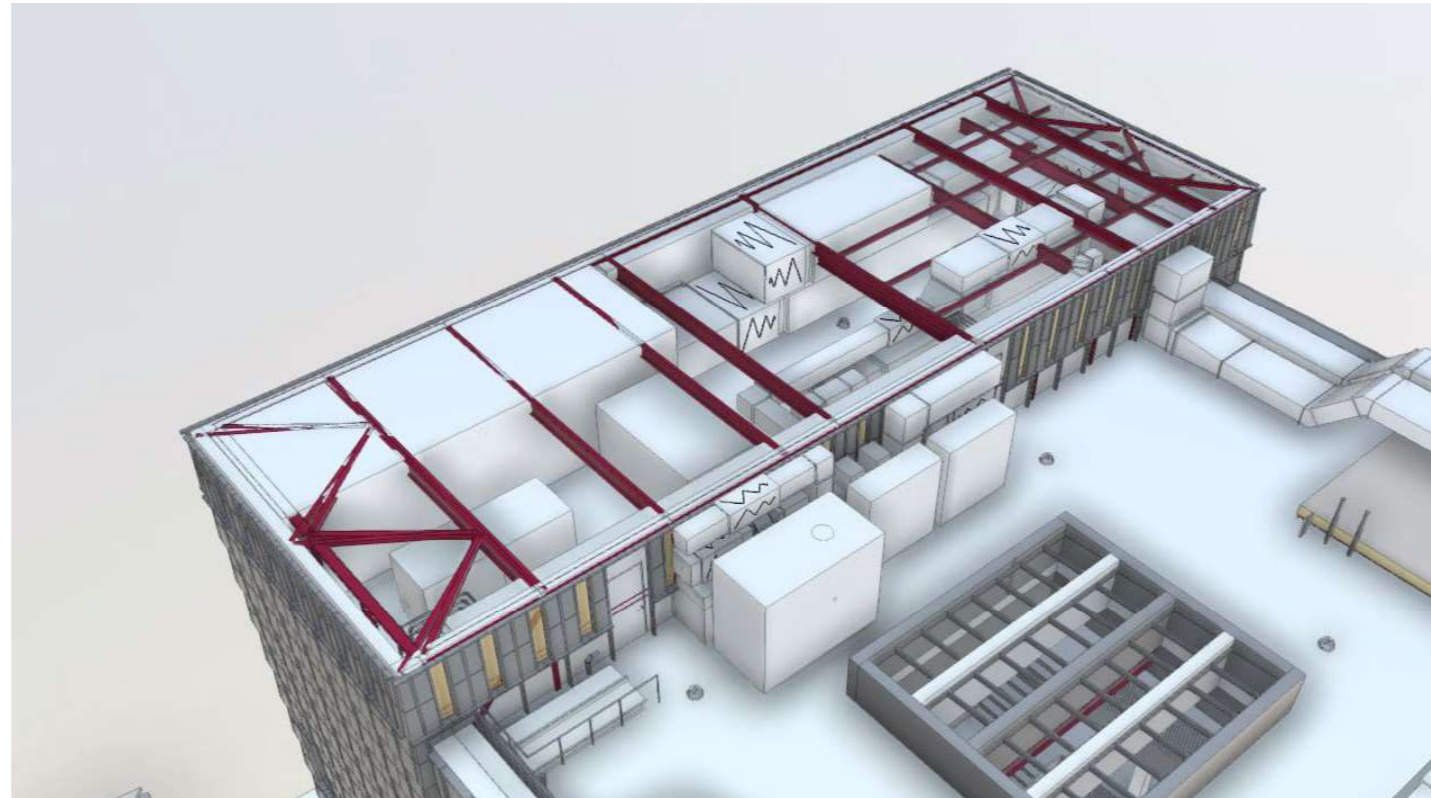
2 Bay Study 01 - Museum Extension North Elevation Section Detail
1:50



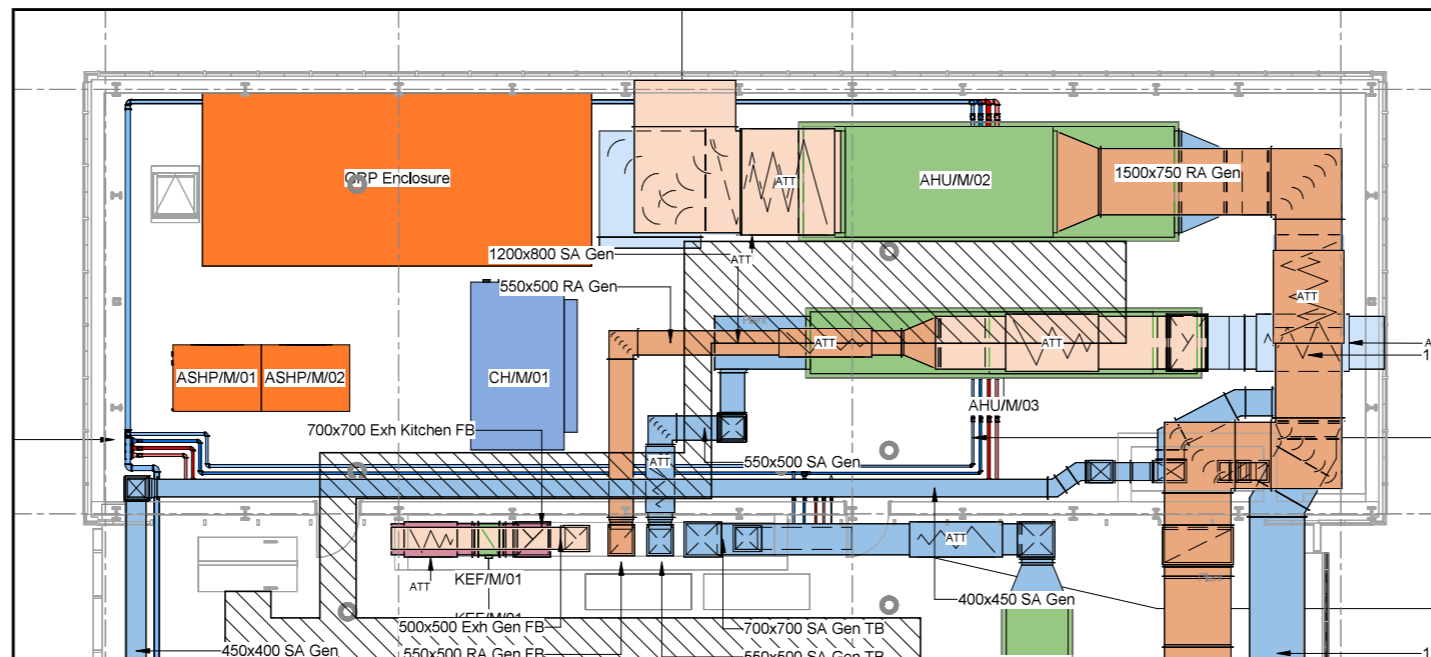
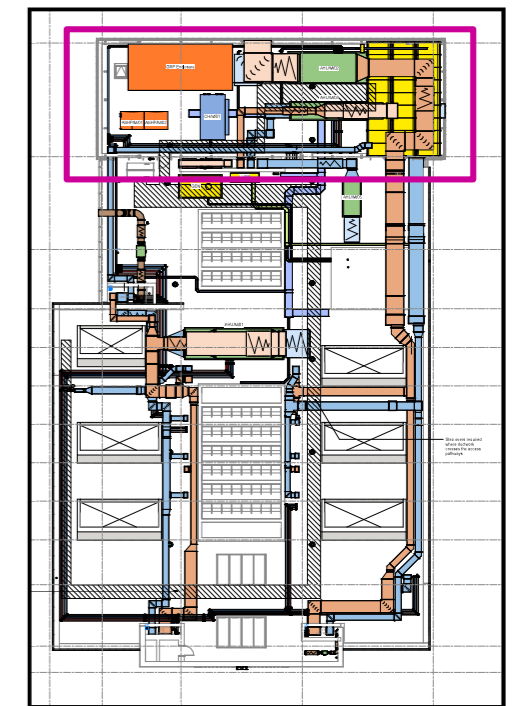
PROPOSED FLOOR TO CEILING HEIGHTS IN EXTENSION

MUSEUM

HEIGHT OF EXTENSION



Aerial view of plant space above roof level



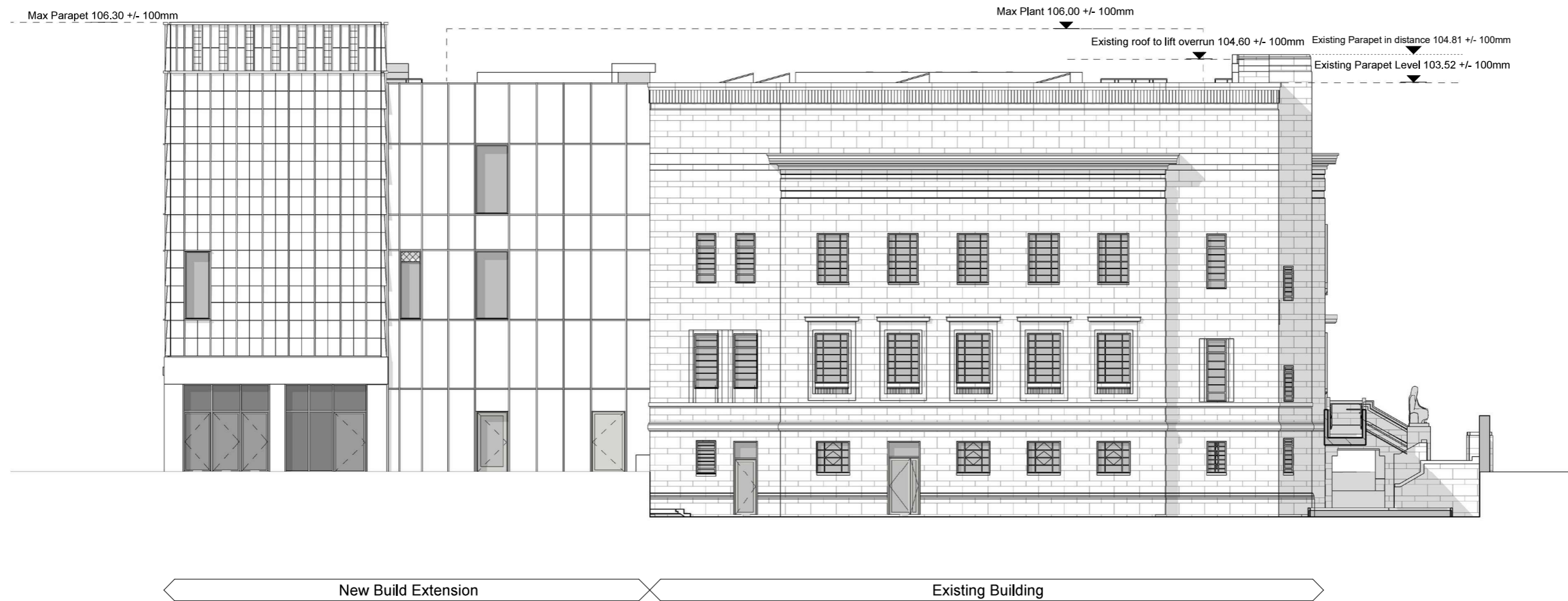
Engineers plan of plant space above roof level
(Heating and cooling shown only)

Legend

- Heating plant
- Ventilation plant
- Electrical plant
- PH plant
- Fresh air ductwork
- Exhaust air ductwork
- Supply air ductwork
- Return air ductwork

MUSEUM

WEST INFILL ELEVATION



Design as per planning
submission

MUSEUM

WEST INFILL ELEVATION

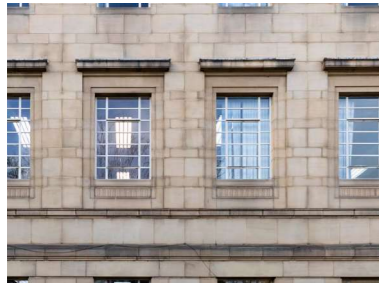


Proposed Amendment

Reduced mullions to accentuate horizontals & perforate panels in front of windows/ false windows. Signage zone shown indicatively on new stone extension.

MUSEUM

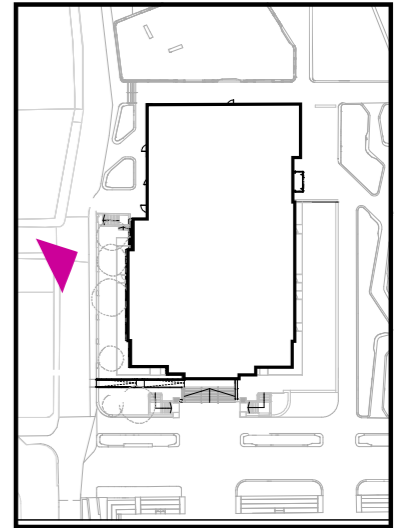
WEST INFILL ELEVATION VIEW 01



Existing Stone



Potential Re-Use Stone



Design as per planning submission



Proposed Amendment 1
Reduced mullions to accentuate horizontals & perforate panels in front of windows/ false windows. Signage zone shown indicatively on new stone extension.

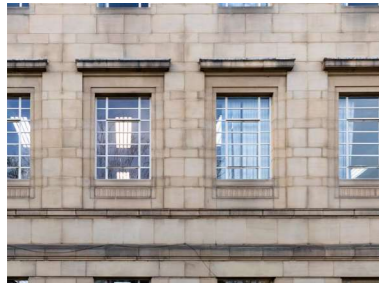


Proposed Amendment 2
As Proposed Amendment 1 with lighter contrasting metal

Signage shown indicatively

MUSEUM

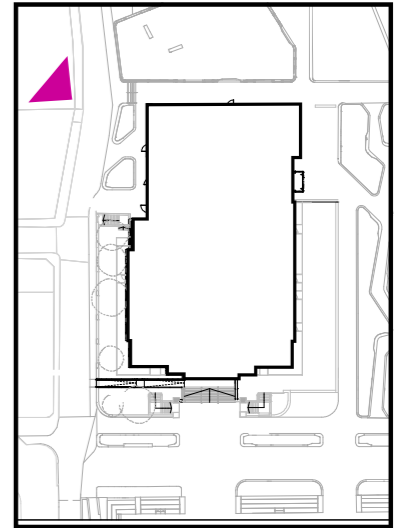
WEST INFILL ELEVATION VIEW 02



Existing Stone



Potential Re-Use Stone



Design as per planning submission



Proposed Amendment 1
Reduced mullions to accentuate horizontals & perforate panels in front of windows/ false windows. Signage zone shown indicatively on new stone extension.



Proposed Amendment 2
As Proposed Amendment 1 with lighter contrasting metal

Signage shown indicatively

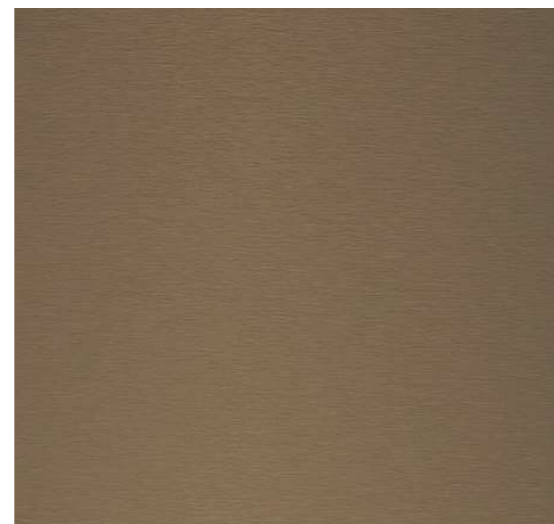
MUSEUM

MATERIAL TONE

Bronze proposed. Final colour dependant on stone re-use feasibility and suggested to be agreed through condition and sample review



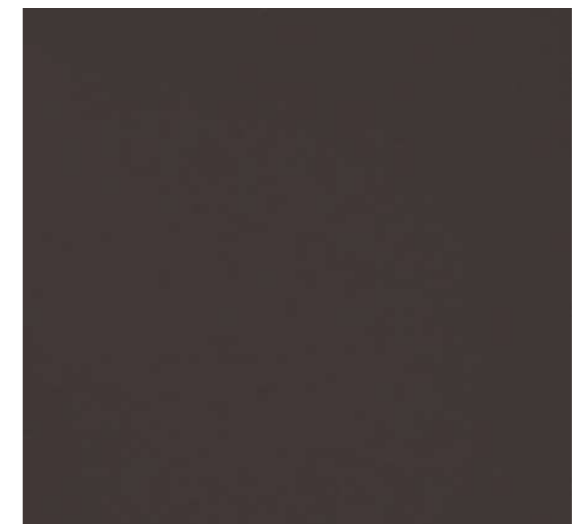
Light bronze



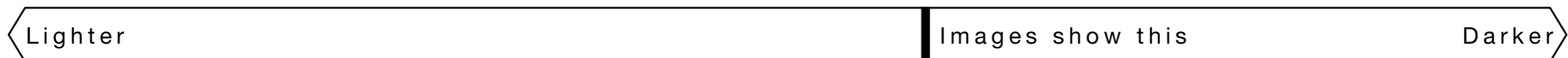
Medium bronze



Dark bronze



Extra dark bronze



GALLERY

GALLERY

SOUTH FACADE STUDY



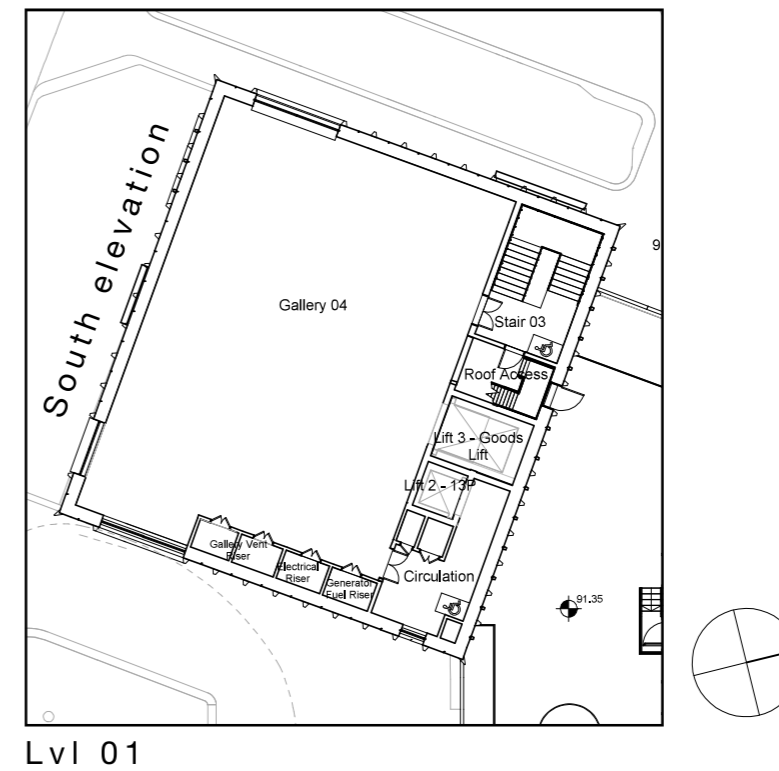
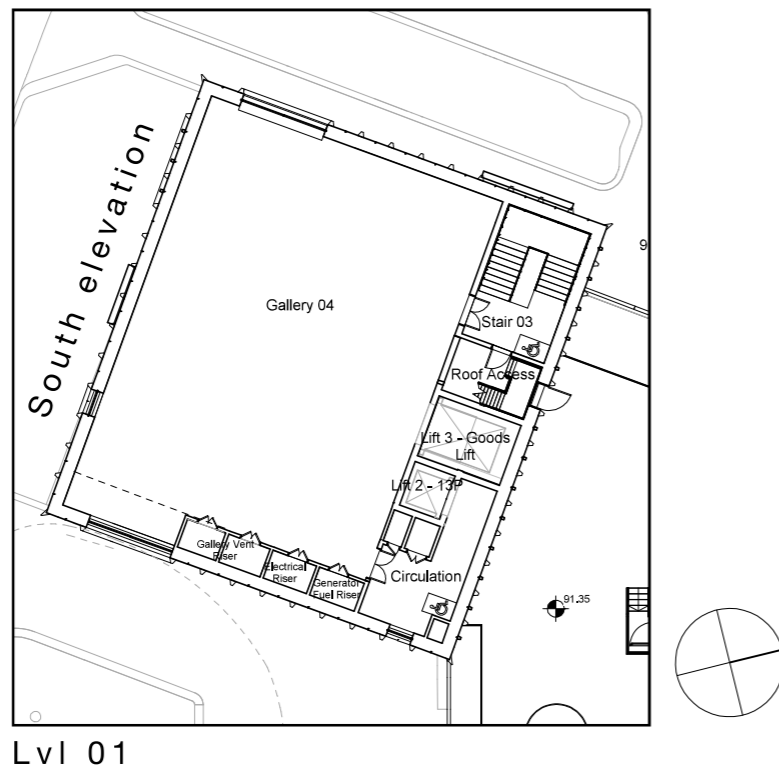
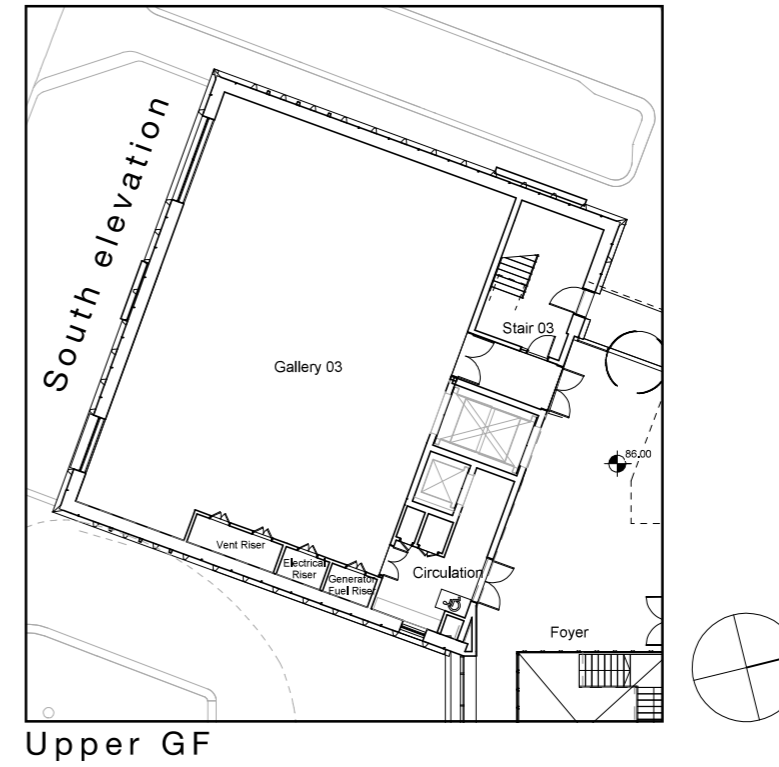
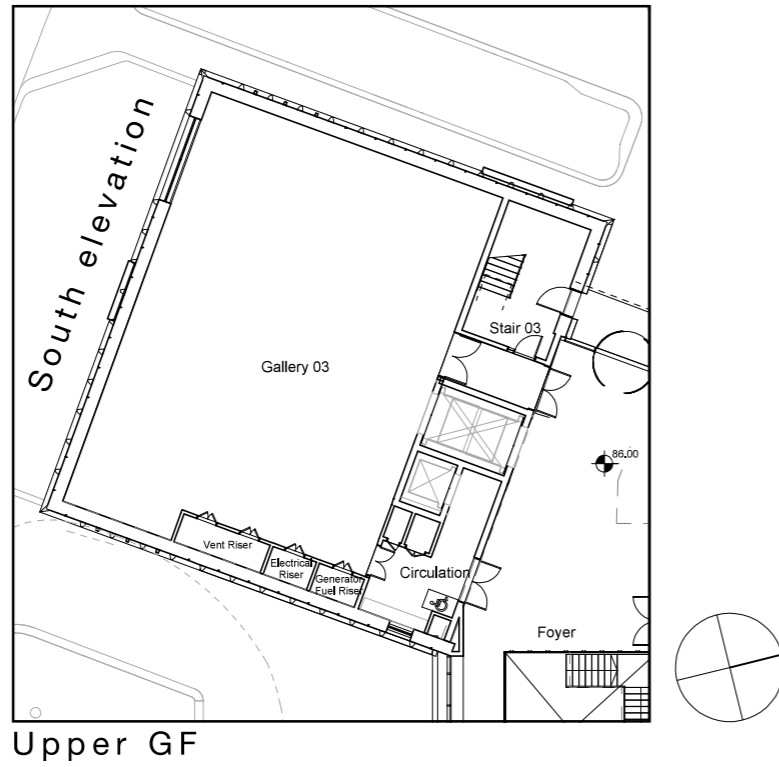
Design as per planning submission



Proposed Amendment -
Additional and wider windows + shifted across one bay

GALLERY

SOUTH FACADE STUDY



Design as per planning submission

Suggested Amendment -
Additional and wider windows + shifted across one bay

VENUE

VENUE AND MSCP

EXTERNAL CHARACTER AND MATERIALITY



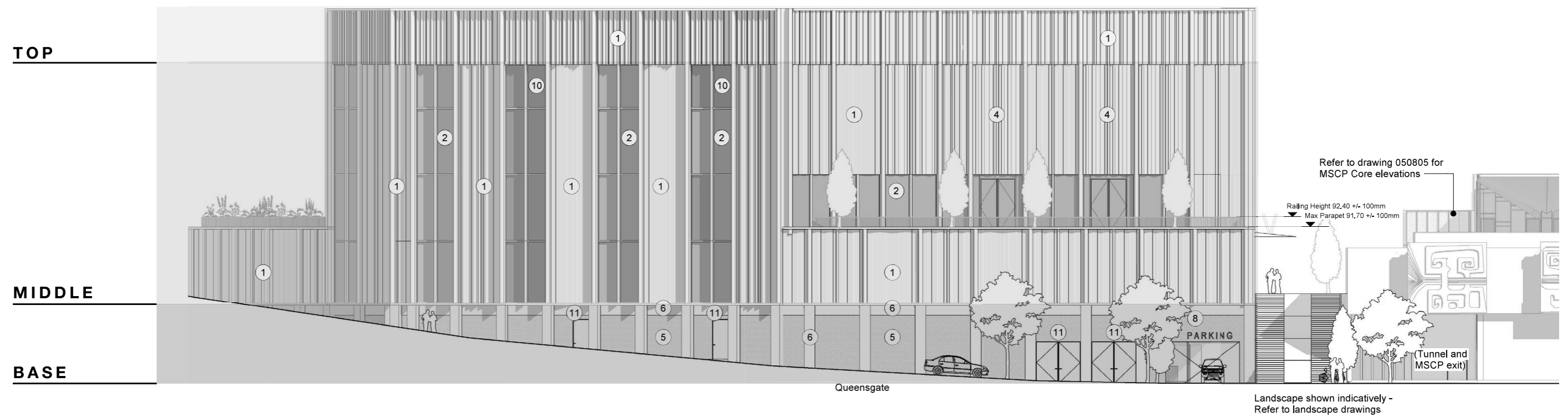
TOP

MIDDLE

BASE

VENUE AND MSCP

EXTERNAL CHARACTER AND MATERIALITY



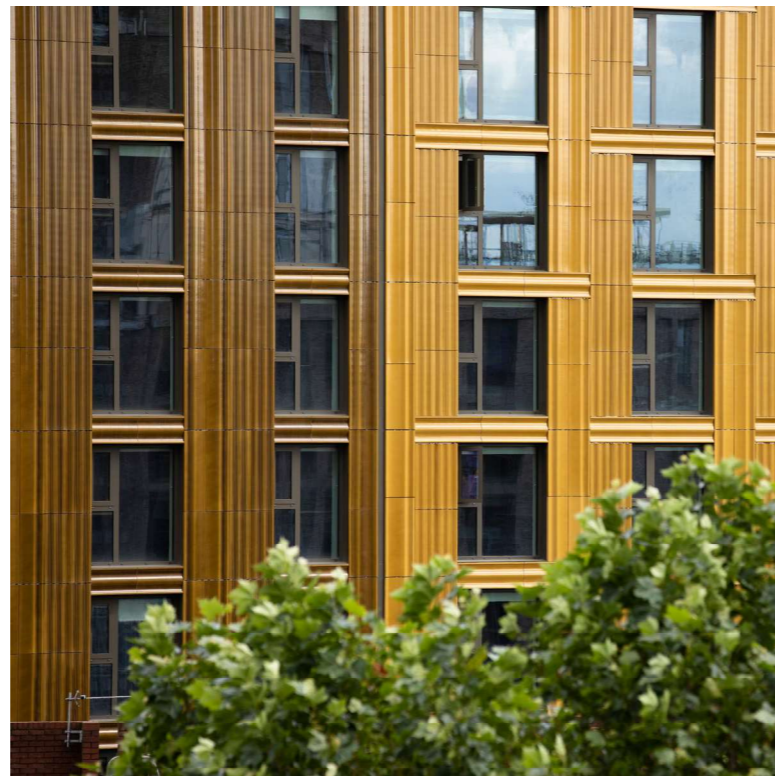
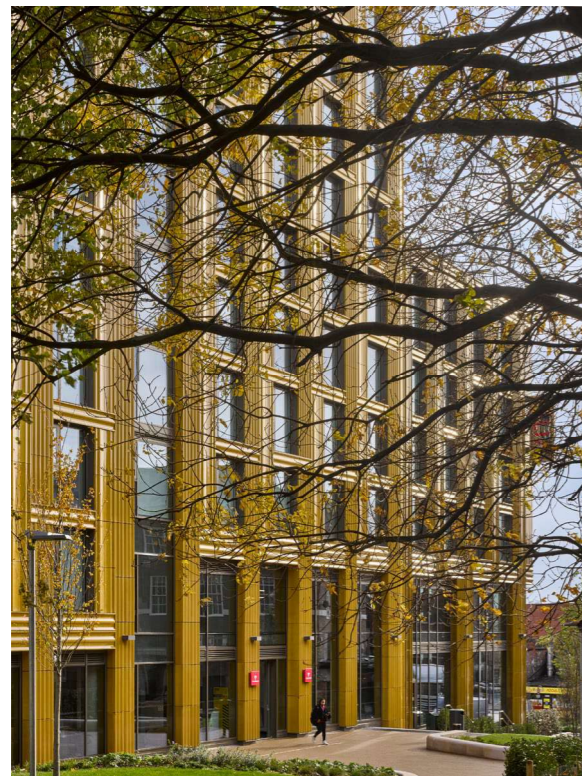
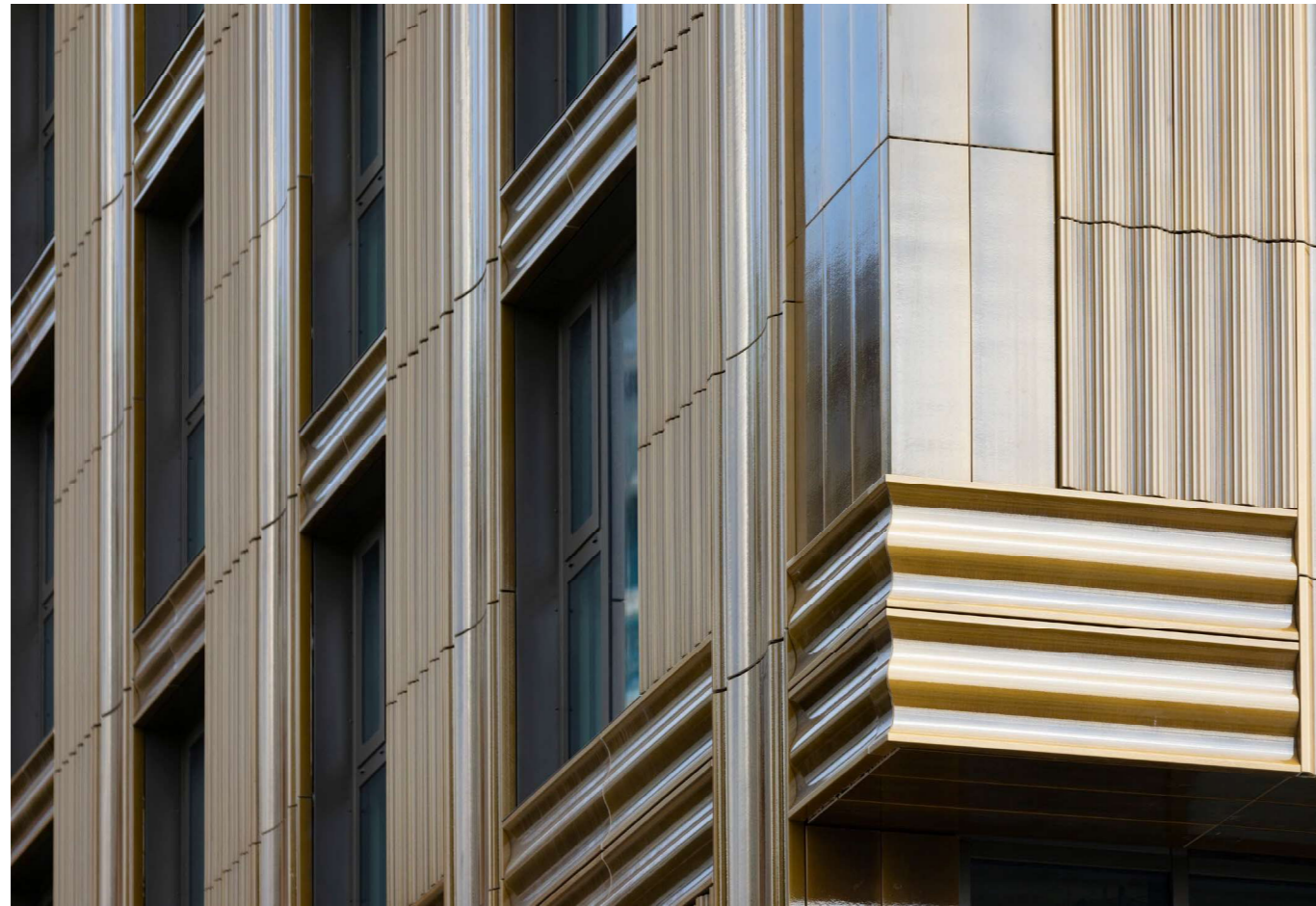
VENUE AND MSCP

EXTERNAL CHARACTER AND MATERIALITY



VENUE AND MSCP

EXTERNAL CHARACTER AND MATERIALITY



St Albans Place Leeds, FCBS - RIBA Yorkshire Award 2021 and RIBA Yorkshire Building of the Year 2021

VENUE AND MSCP

EXTERNAL CHARACTER AND MATERIALITY - DEVELOPING THE OVERALL SENSE OF TONE

Profile - waved profiles proposed with different densities



Tile Texture - Smooth texture proposed



Glaze colour - Buff tone proposed within the range below



RAL 1013

RAL 1015

RAL 1014

RAL 1000

RAL 1001

Lighter

Images show this

Darker

Final colour suggested to be agreed through condition by reviewing a range of glazes in-situ on the correct profile and texture

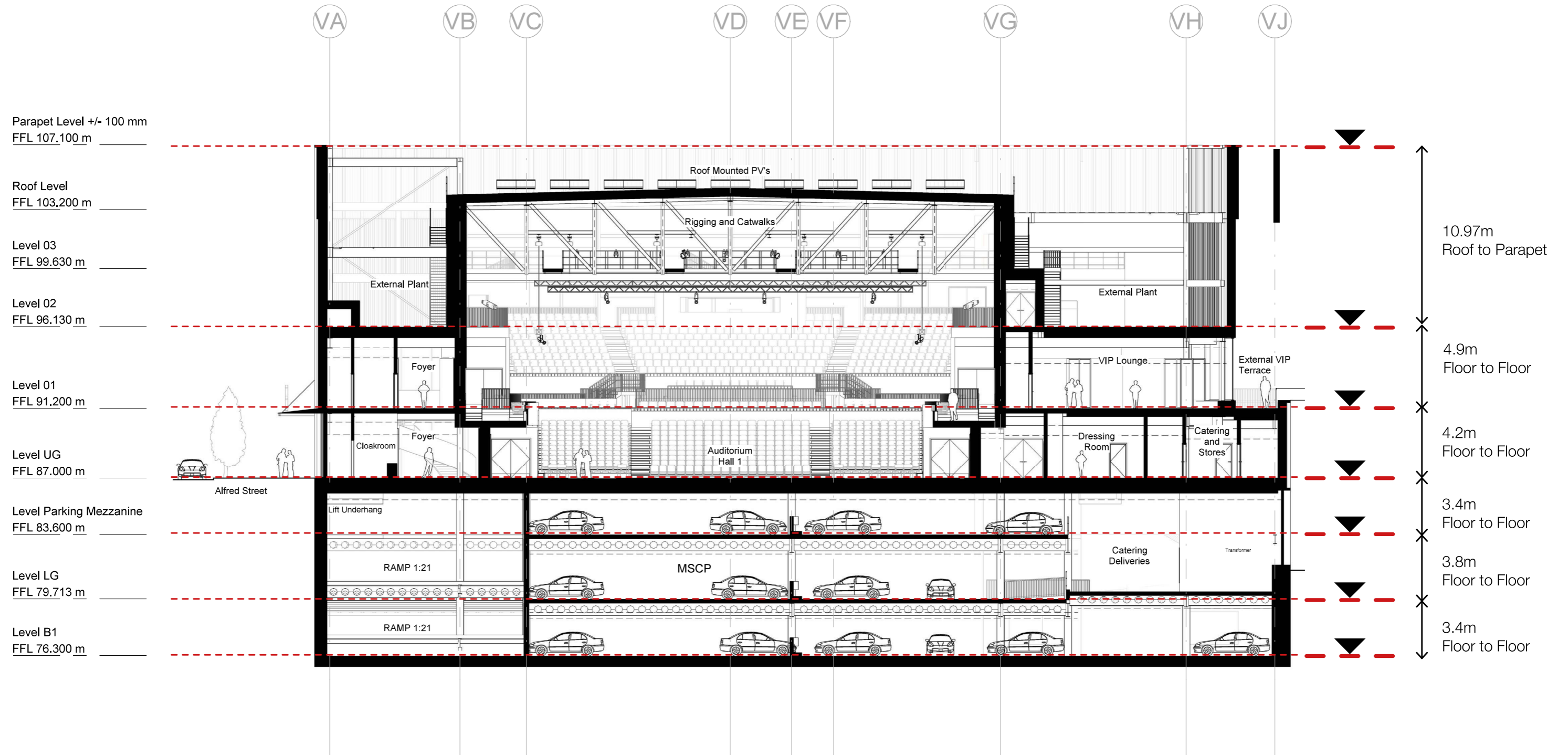
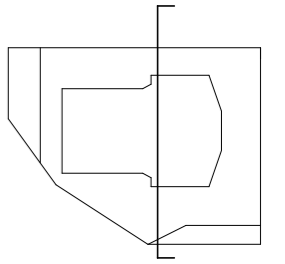
VENUE - ENVELOPE STUDIES

RESPONSE TO QUERIES - PLANT VENT AND CHARACTER OF BASE



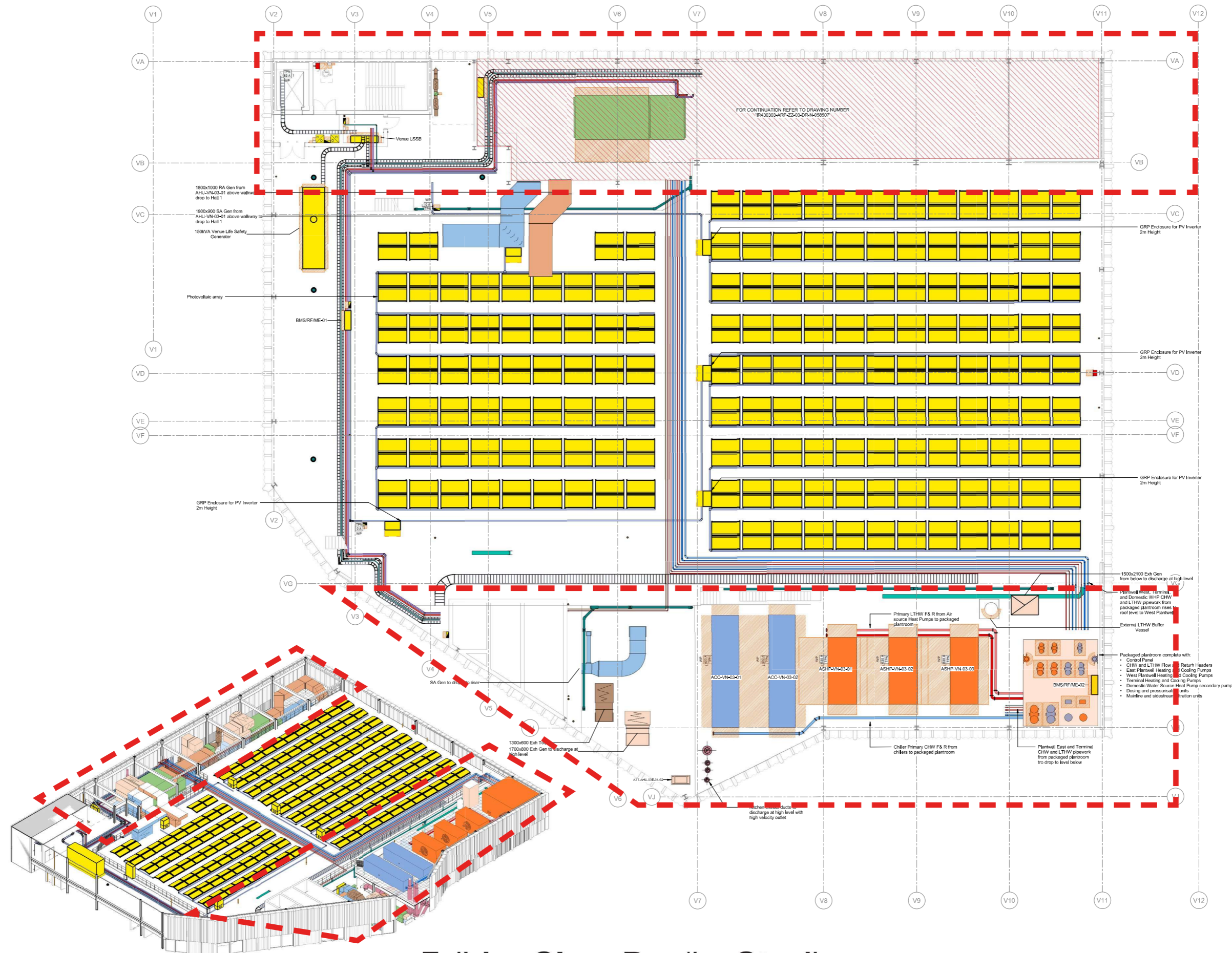
VENUE - ENVELOPE STUDIES

RESPONSE TO QUERIES - PLANT VENT



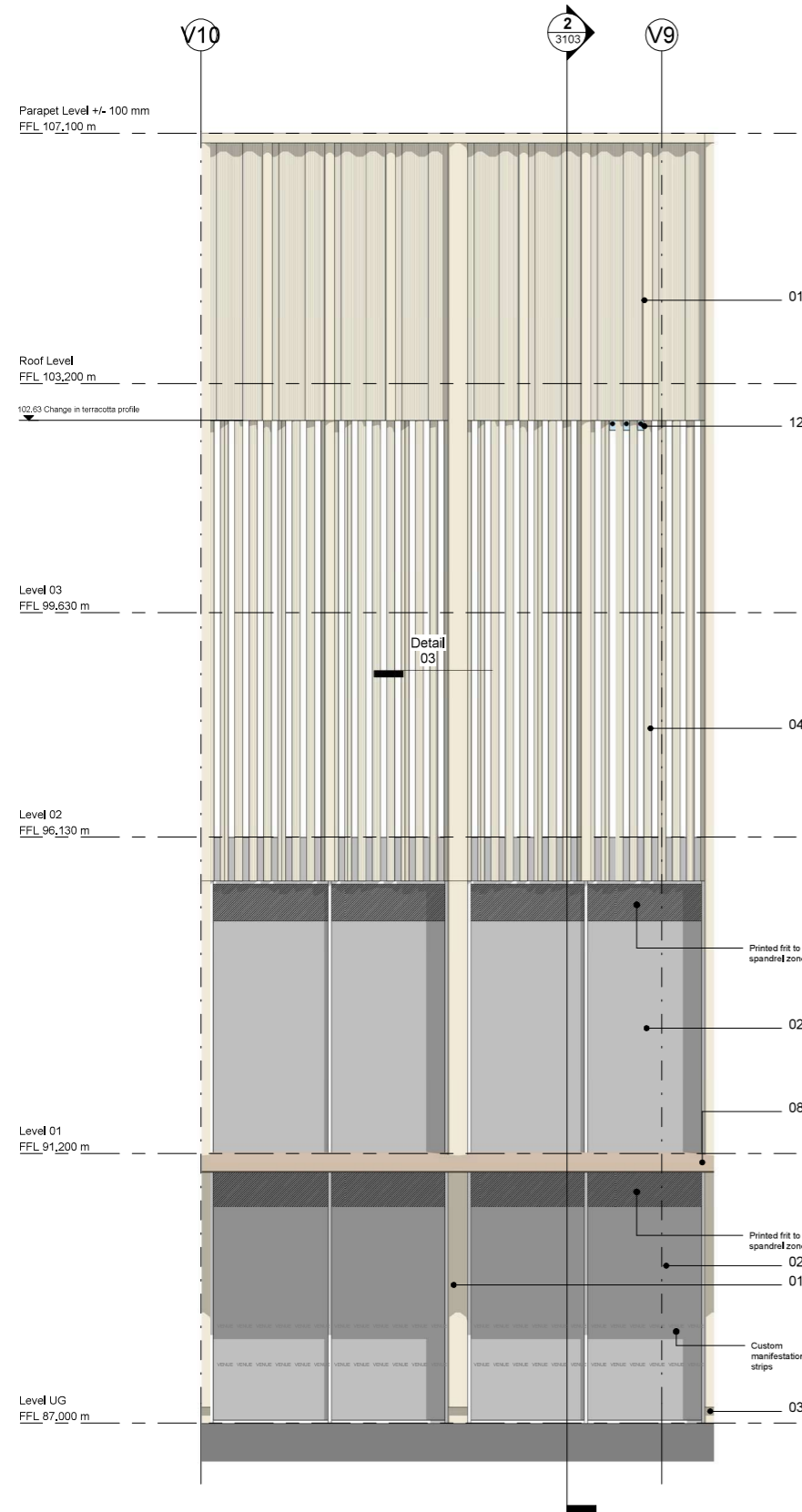
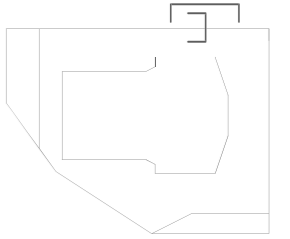
VENUE - ENVELOPE STUDIES

RESPONSE TO QUERIES - PLANT VENT

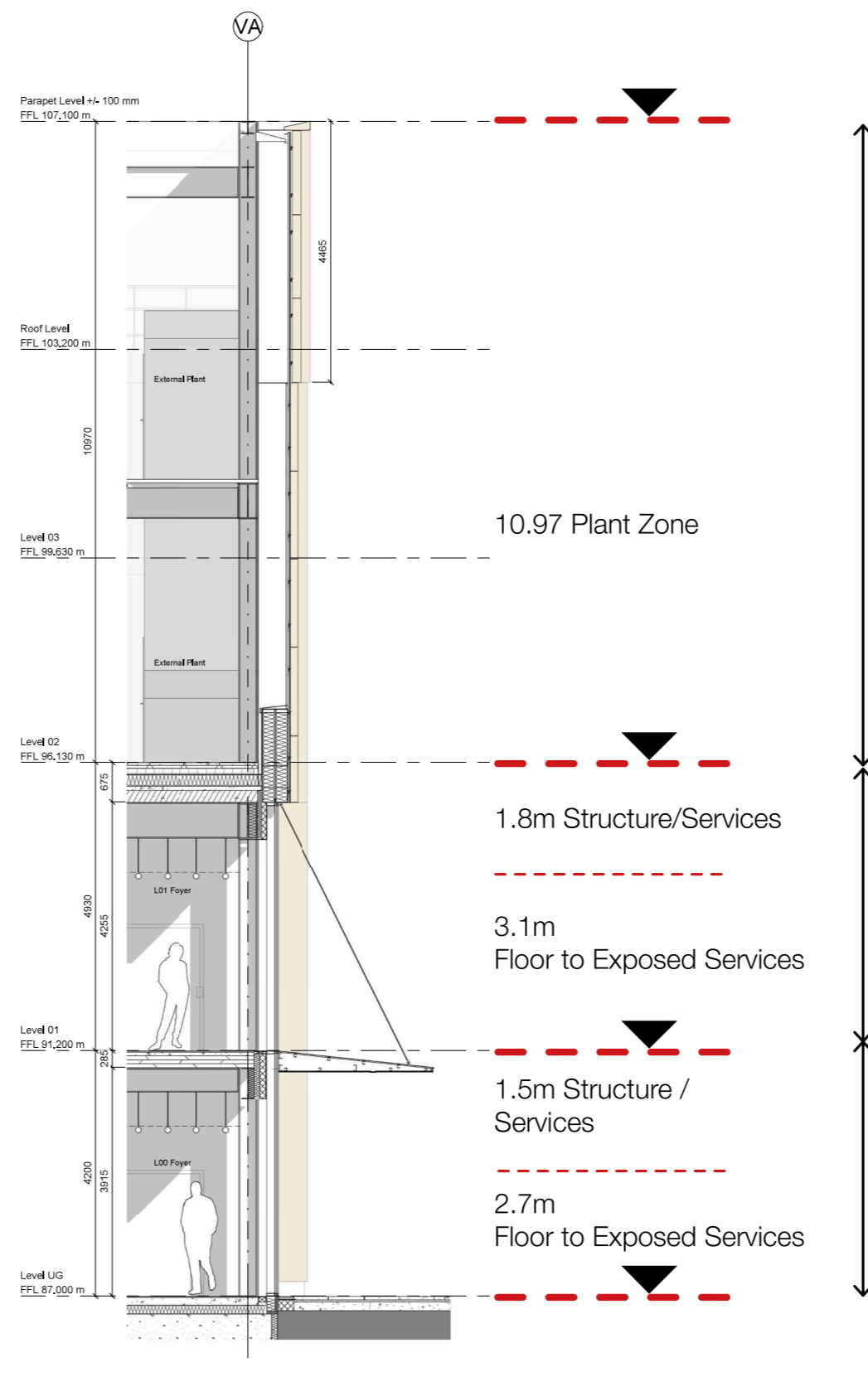


VENUE - ENVELOPE STUDIES

RESPONSE TO QUERIES - PLANT VENT



1 Bay Study Elevation 03 - Ceramic + Louvred Panels
1:50

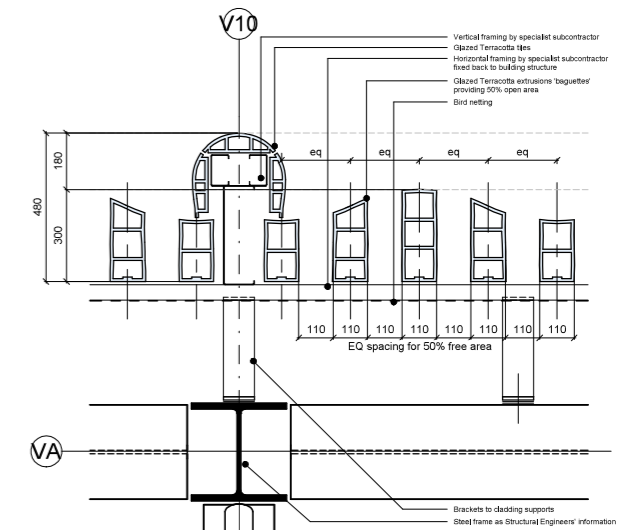


2 Bay Study Section 03 - Ceramic + Louvred Panels
1:50

10.97m
Roof to Parapet
Total Plant Zone required

4.9m
Floor to Floor

4.2m
Floor to Floor



VENUE - ENVELOPE STUDIES

RESPONSE TO QUERIES - PLANT VENT



Zoomed in view of crown



Zoomed in view of crown



Material precedents

VENUE - ENVELOPE STUDIES

RESPONSE TO QUERIES - PLANT VENT

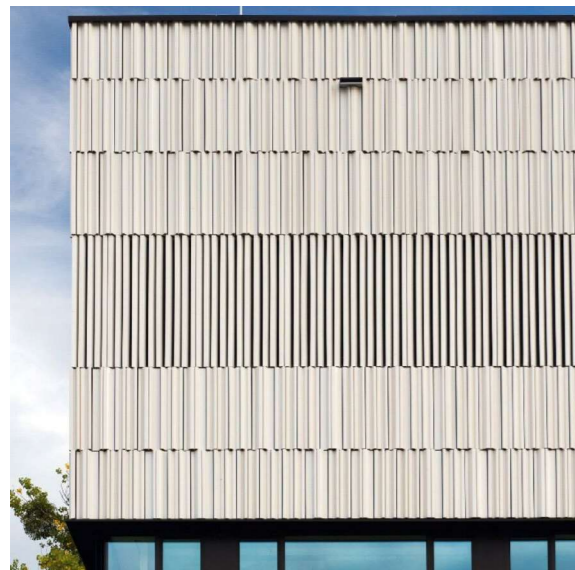


Vent area



Vent area

Terracotta baguette vent precedent - Munich University Nano Institute

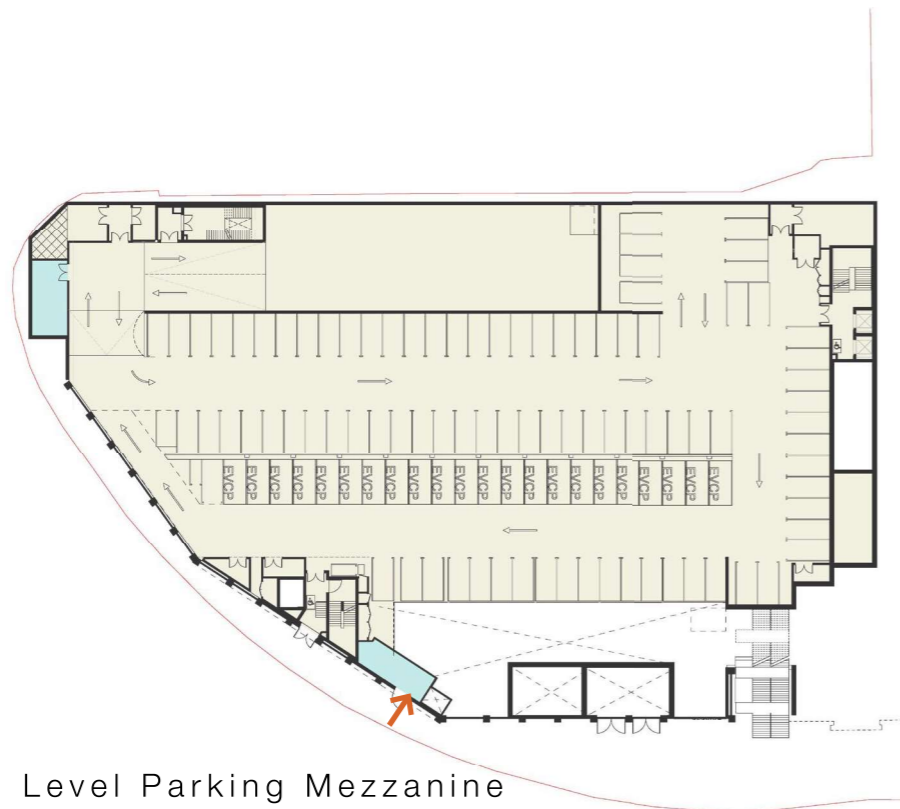


Close up facade view

Rear elevation with different colour vent baguettes

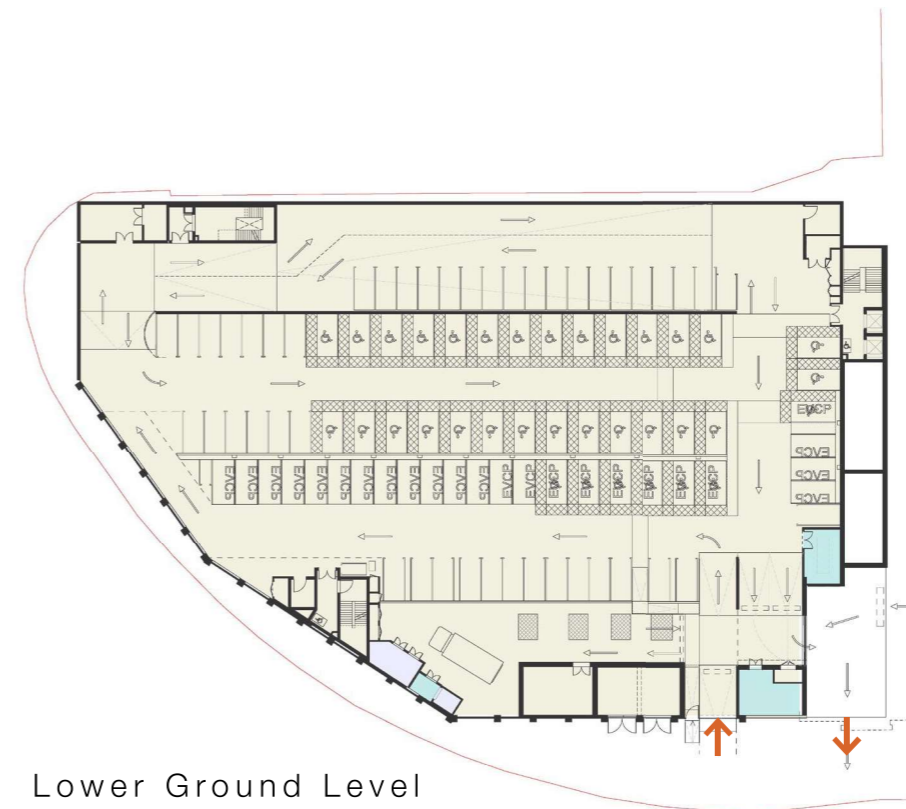
VENUE - ENVELOPE STUDIES

RESPONSE TO QUERIES - CHARACTER OF BASE



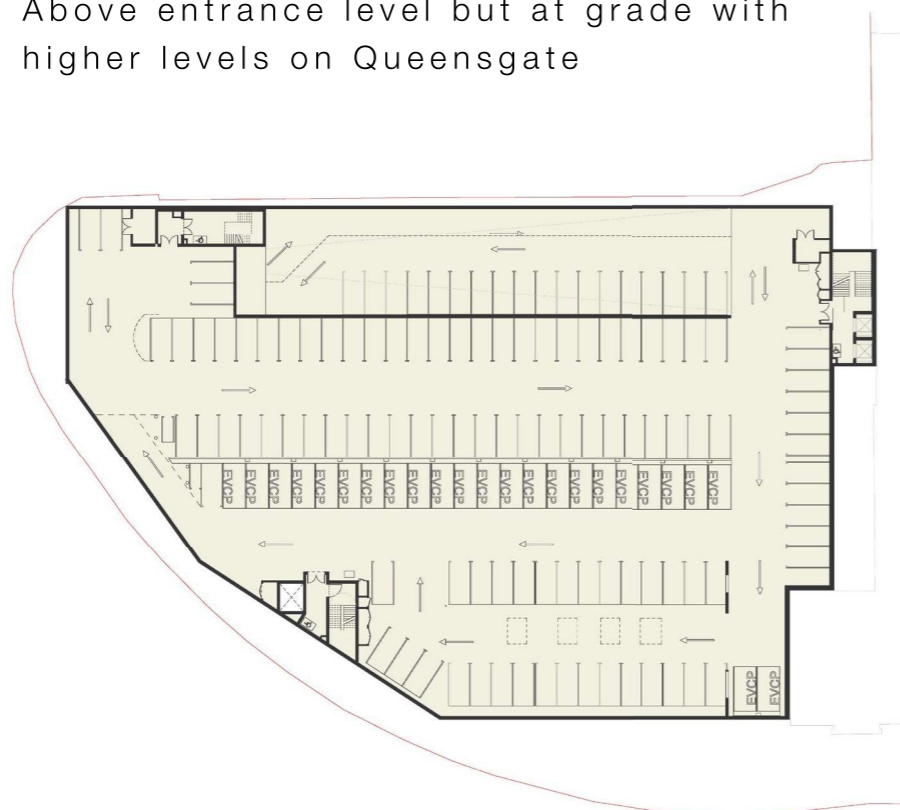
Level Parking Mezzanine

Above entrance level but at grade with higher levels on Queensgate



Lower Ground Level

Entrance level



Basement Level

Below Queensgate

- MSCP
- BOH
- Dressing Room
- Catering
- Entrance

VENUE - ENVELOPE STUDIES

RESPONSE TO QUERIES - CHARACTER OF BASE



Base during the day



Base at night

Signage and lighting shown indicatively



Material precedents

VENUE - ENVELOPE STUDIES

RESPONSE TO QUERIES - QUEENSGATE EXPERIENCE



Signage shown indicatively



VENUE - ENVELOPE STUDIES

RESPONSE TO QUERIES - QUEENSGATE EXPERIENCE



Signage shown indicatively

VENUE - ENVELOPE STUDIES

RESPONSE TO QUERIES - QUEENSGATE EXPERIENCE



Signage shown indicatively

VENUE - ENVELOPE STUDIES

RESPONSE TO QUERIES - QUEENSGATE EXPERIENCE



Signage shown indicatively



VENUE - ENVELOPE STUDIES

RESPONSE TO QUERIES - QUEENSGATE EXPERIENCE



Signage and lighting shown indicatively

Kirklees Cultural Heart | Proposed Planning Amendments and Further
Detail of Submitted Design

FeildenCleggBradleyStudios

Feilden Clegg Bradley Studios

Feilden Clegg Bradley Studios LLP

LONDON

Twenty
Tottenham Street
London W1T 4RG
T +44 (0)20 7323 5737