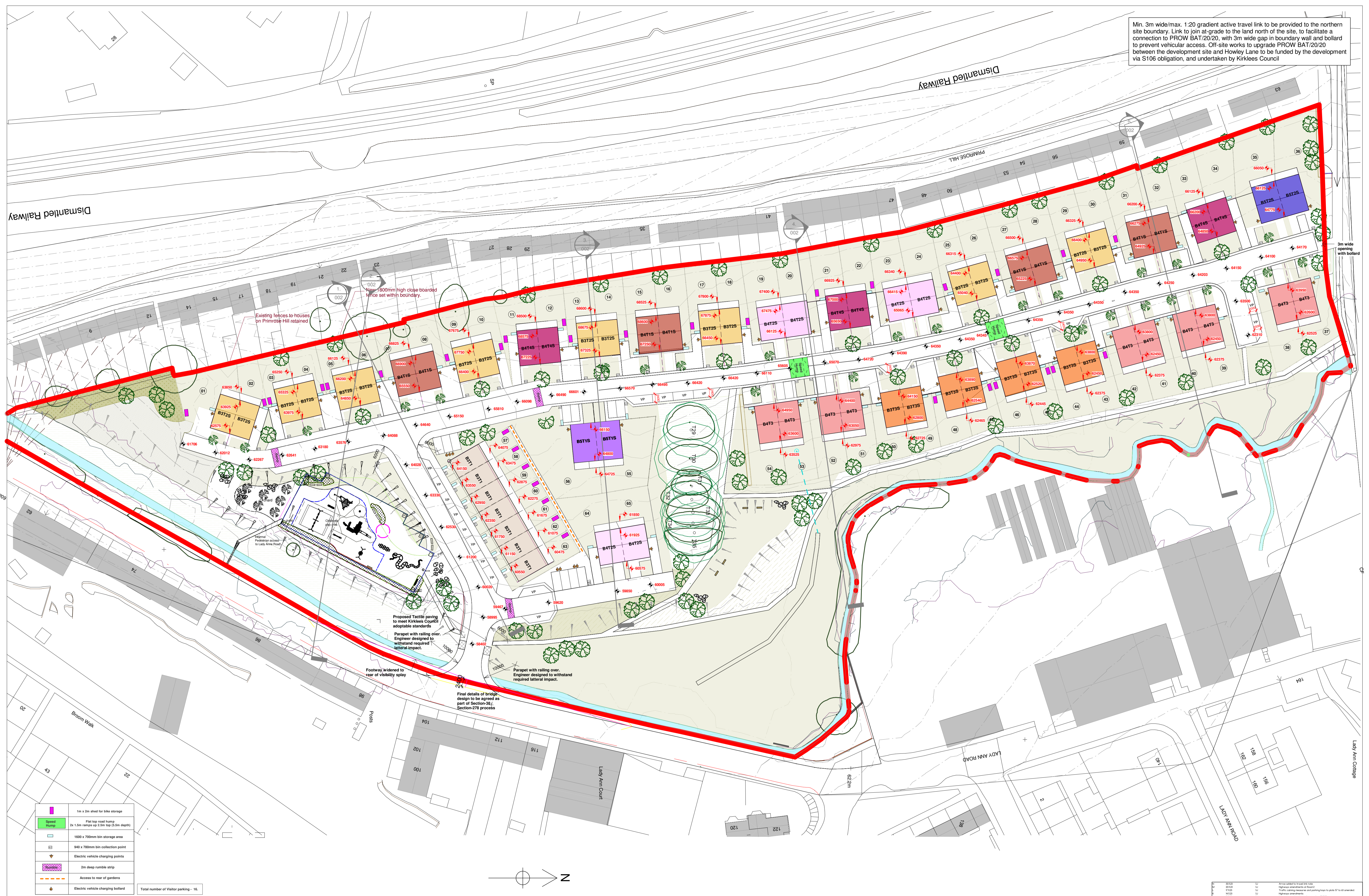


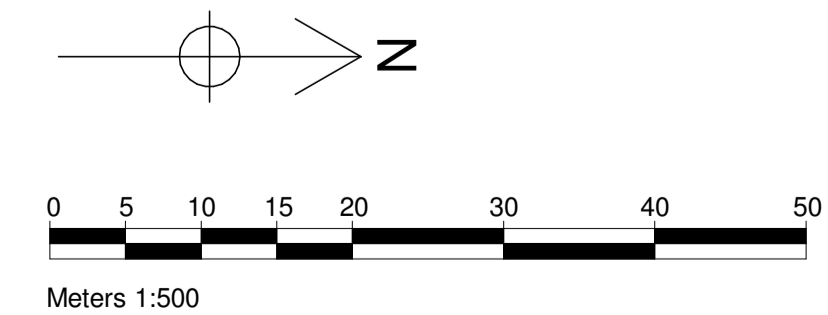
Min. 3m wide/max. 1:20 gradient active travel link to be provided to the northern site boundary. Link to join at-grade to the land north of the site, to facilitate a connection to PROW BAT/20/20, with 3m wide gap in boundary wall and bollard to prevent vehicular access. Off-site works to upgrade PROW BAT/20/20 between the development site and Howley Lane to be funded by the development via S106 obligation, and undertaken by Kirklees Council



	1m x 2m shed for bike storage
	Flat top road hump (2x 1.5m range up 2.5m top (5.5m depth))
	1800 x 700mm bin storage area
	940 x 700mm bin collection point
	Electric vehicle charging points
	2m deep rumble strip
	Access to rear of gardens
	Electric vehicle charging bollard

Total number of Visitor parking - 16

PROPOSED SITE PLAN



DEVELOPED DESIGN

Client: D Noble Ltd
Project: Lady Ann Road Batley

Scales@A1 1:500 Drawn: AJB Date: 11/10/22 Checked: NB

Drawing no: 10703-SELF-P-ZZ-A-M3- 001
Rev: N

Rev	Date	Drawn	Description
1			Issue for client review
2			Highways amendments at house 2
3			Highways amendments at house 2
4			Highways amendments at house 2
5			Highways amendments at house 2
6			Highways amendments at house 2
7			Highways amendments at house 2
8			Highways amendments at house 2
9			Highways amendments at house 2
10			Highways amendments at house 2
11			Highways amendments at house 2
12			Highways amendments at house 2
13			Highways amendments at house 2
14			Highways amendments at house 2
15			Highways amendments at house 2
16			Highways amendments at house 2
17			Highways amendments at house 2
18			Highways amendments at house 2
19			Highways amendments at house 2
20			Highways amendments at house 2
21			Highways amendments at house 2
22			Highways amendments at house 2
23			Highways amendments at house 2
24			Highways amendments at house 2
25			Highways amendments at house 2
26			Highways amendments at house 2
27			Highways amendments at house 2
28			Highways amendments at house 2
29			Highways amendments at house 2
30			Highways amendments at house 2
31			Highways amendments at house 2
32			Highways amendments at house 2
33			Highways amendments at house 2
34			Highways amendments at house 2
35			Highways amendments at house 2
36			Highways amendments at house 2
37			Highways amendments at house 2
38			Highways amendments at house 2
39			Highways amendments at house 2
40			Highways amendments at house 2
41			Highways amendments at house 2
42			Highways amendments at house 2
43			Highways amendments at house 2
44			Highways amendments at house 2
45			Highways amendments at house 2
46			Highways amendments at house 2
47			Highways amendments at house 2
48			Highways amendments at house 2
49			Highways amendments at house 2
50			Highways amendments at house 2
51			Highways amendments at house 2
52			Highways amendments at house 2
53			Highways amendments at house 2
54			Highways amendments at house 2
55			Highways amendments at house 2
56			Highways amendments at house 2
57			Highways amendments at house 2
58			Highways amendments at house 2
59			Highways amendments at house 2
60			Highways amendments at house 2
61			Highways amendments at house 2
62			Highways amendments at house 2
63			Highways amendments at house 2
64			Highways amendments at house 2
65			Highways amendments at house 2
66			Highways amendments at house 2
67			Highways amendments at house 2
68			Highways amendments at house 2
69			Highways amendments at house 2
70			Highways amendments at house 2
71			Highways amendments at house 2
72			Highways amendments at house 2
73			Highways amendments at house 2
74			Highways amendments at house 2
75			Highways amendments at house 2
76			Highways amendments at house 2
77			Highways amendments at house 2
78			Highways amendments at house 2
79			Highways amendments at house 2
80			Highways amendments at house 2
81			Highways amendments at house 2
82			Highways amendments at house 2
83			Highways amendments at house 2
84			Highways amendments at house 2
85			Highways amendments at house 2
86			Highways amendments at house 2
87			Highways amendments at house 2
88			Highways amendments at house 2
89			Highways amendments at house 2
90			Highways amendments at house 2
91			Highways amendments at house 2
92			Highways amendments at house 2
93			Highways amendments at house 2
94			Highways amendments at house 2
95			Highways amendments at house 2
96			Highways amendments at house 2
97			Highways amendments at house 2
98			Highways amendments at house 2
99			Highways amendments at house 2
100			Highways amendments at house 2