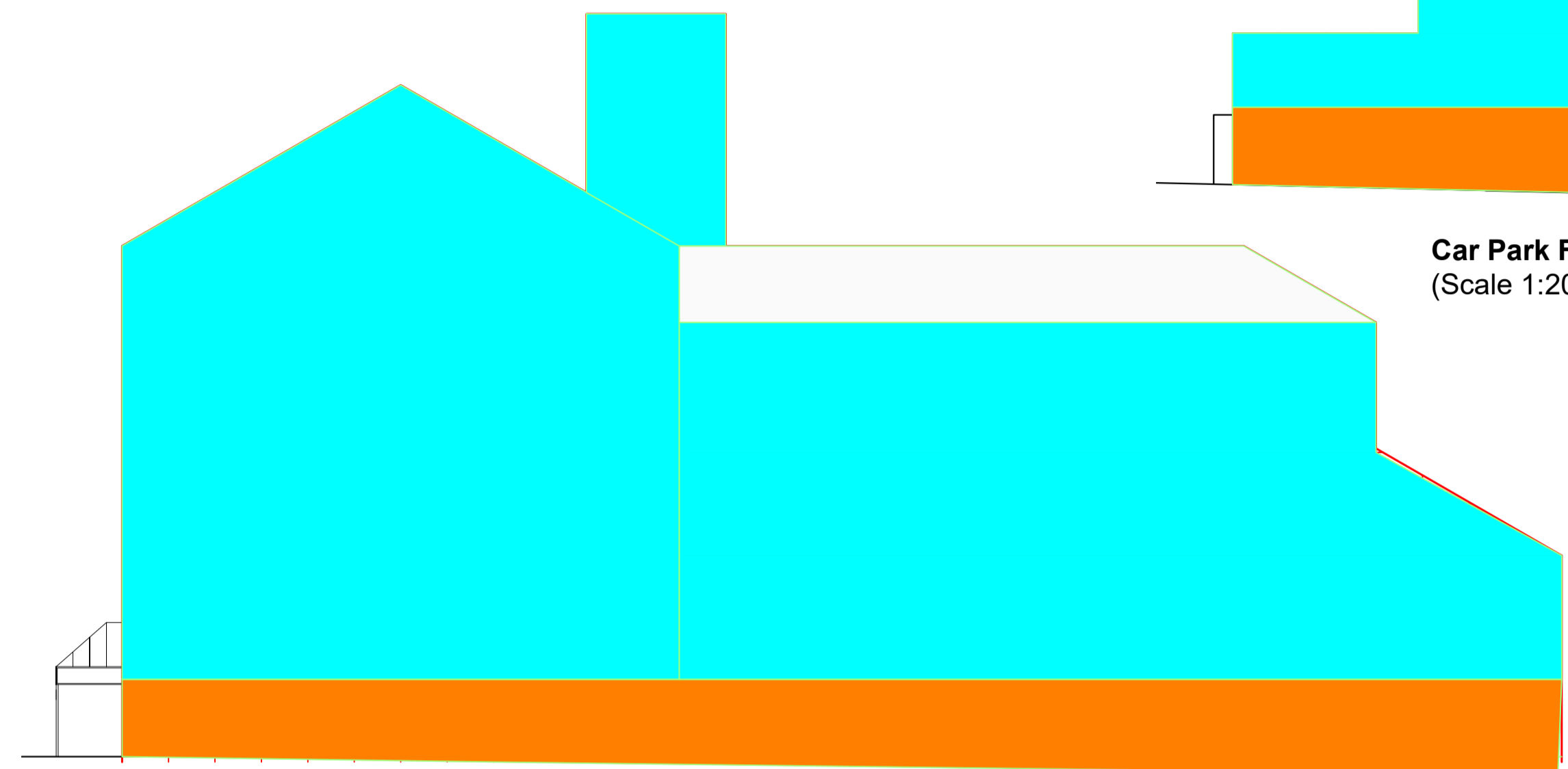
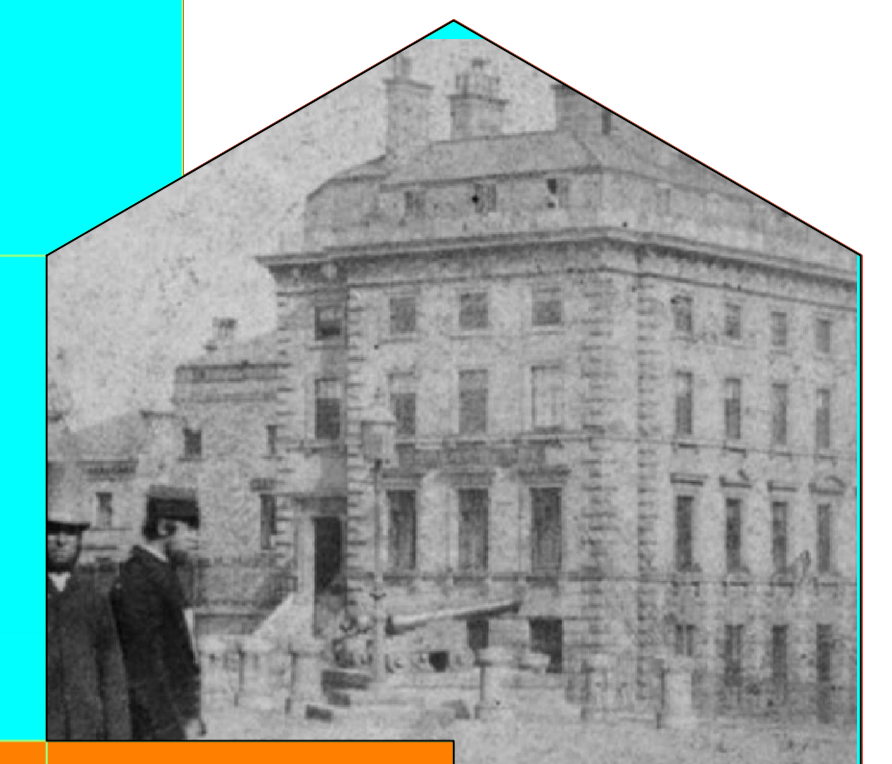


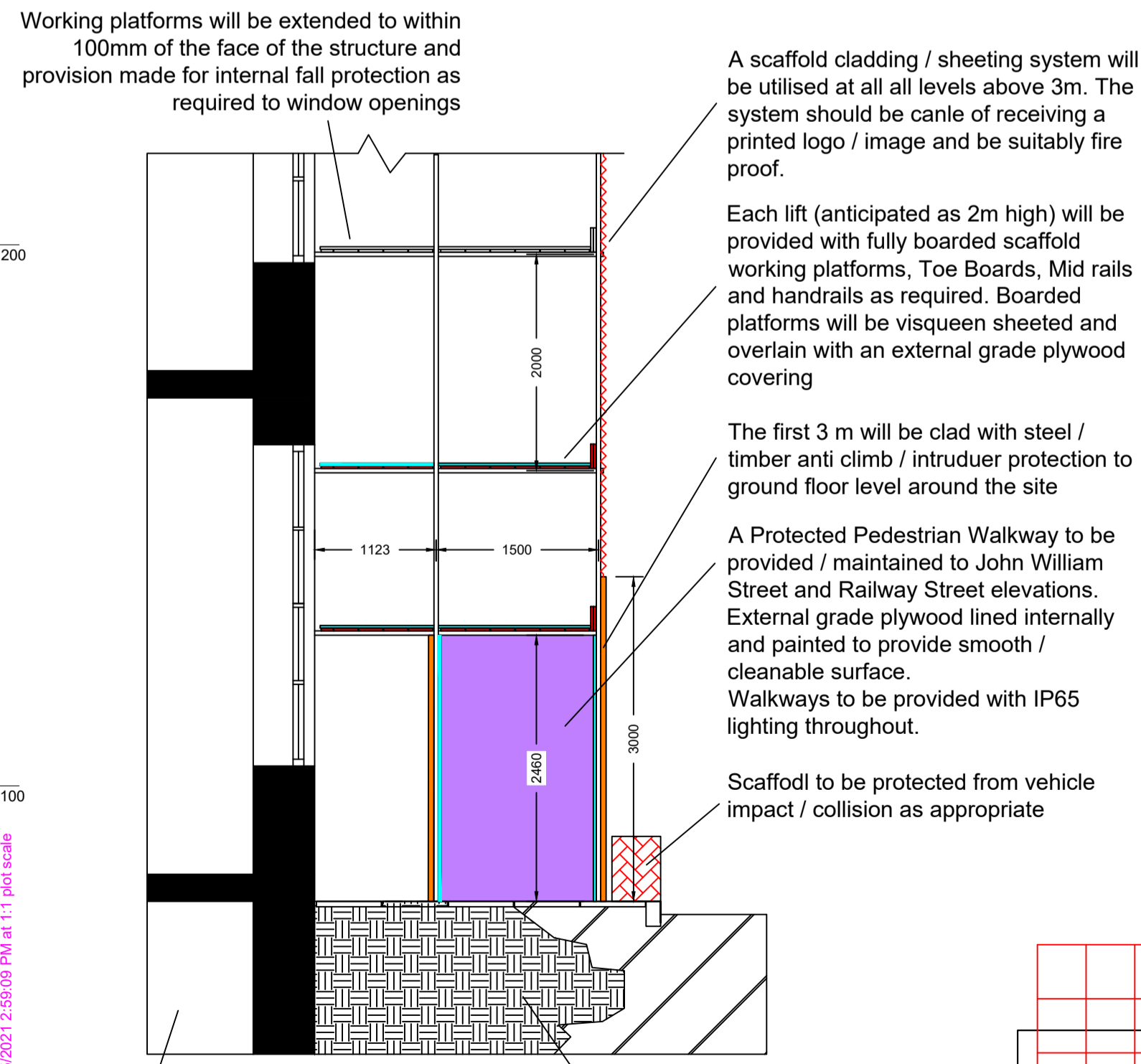
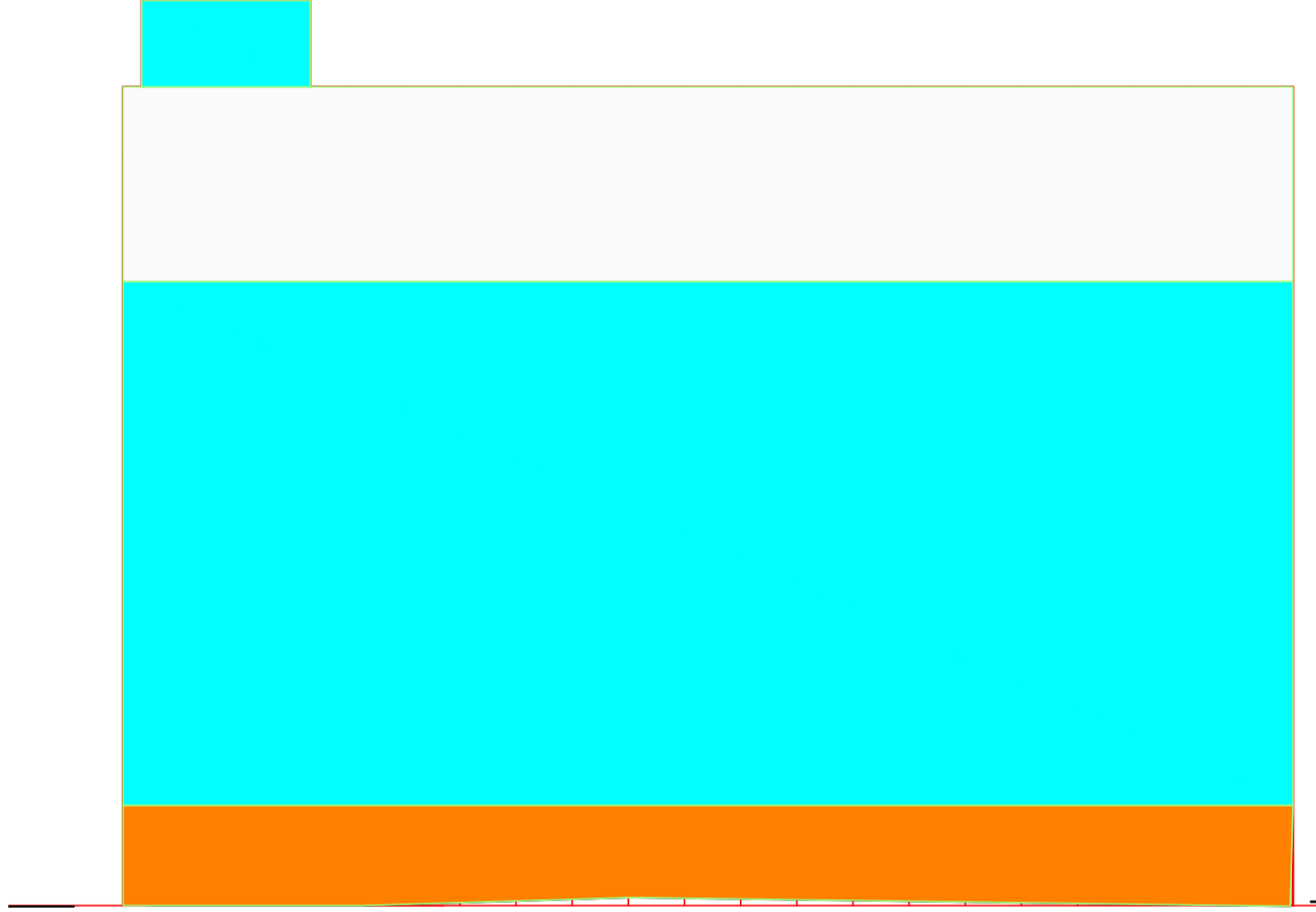
- Plan Key**
- External Scaffold Footprint
  - Site Compound
  - Space Required for Scaffold
  - Possible Locations for Lift / Staircase Access Points
  - Site Boundary / Fencing

All Dims, scaffold suggestions etc are subject to Design and indicative at this stage to aid in the expectation and planning

Notes



**Potential Image Options**  
The Cyan marked areas are vertical faces with the potential for a branded image. An image is shown above as an example. The Orange marked areas will form a rigid board surface to prevent un-authorized access to a height of 3m. The grey areas indicate sloping roof surfaces which are unlikely to be viewable



The Hotel does have a basement level

It is presumed that the scaffolder will reassure himself that surveys undertaken and provided as part of the tender process are suitable and sufficient for the task at hand. It is presumed likely that voids have been present around the scaffolded area and these may be unfilled or filled in subsequent years.

**Kirklees COUNCIL**

Directorate: Kirklees Council

Premise: The George Hotel

Drawing Title: Indicative Scaffold Details

Reference No. P1104	Scale A1 VAR	Drawn TON 24/2/21	Checked TON 24/2/21
Revision 001/01	Revision Prov		

Plotted by Tony Steeds on 22/02/21 12:50:00 PM at 1:1 (A1) scale