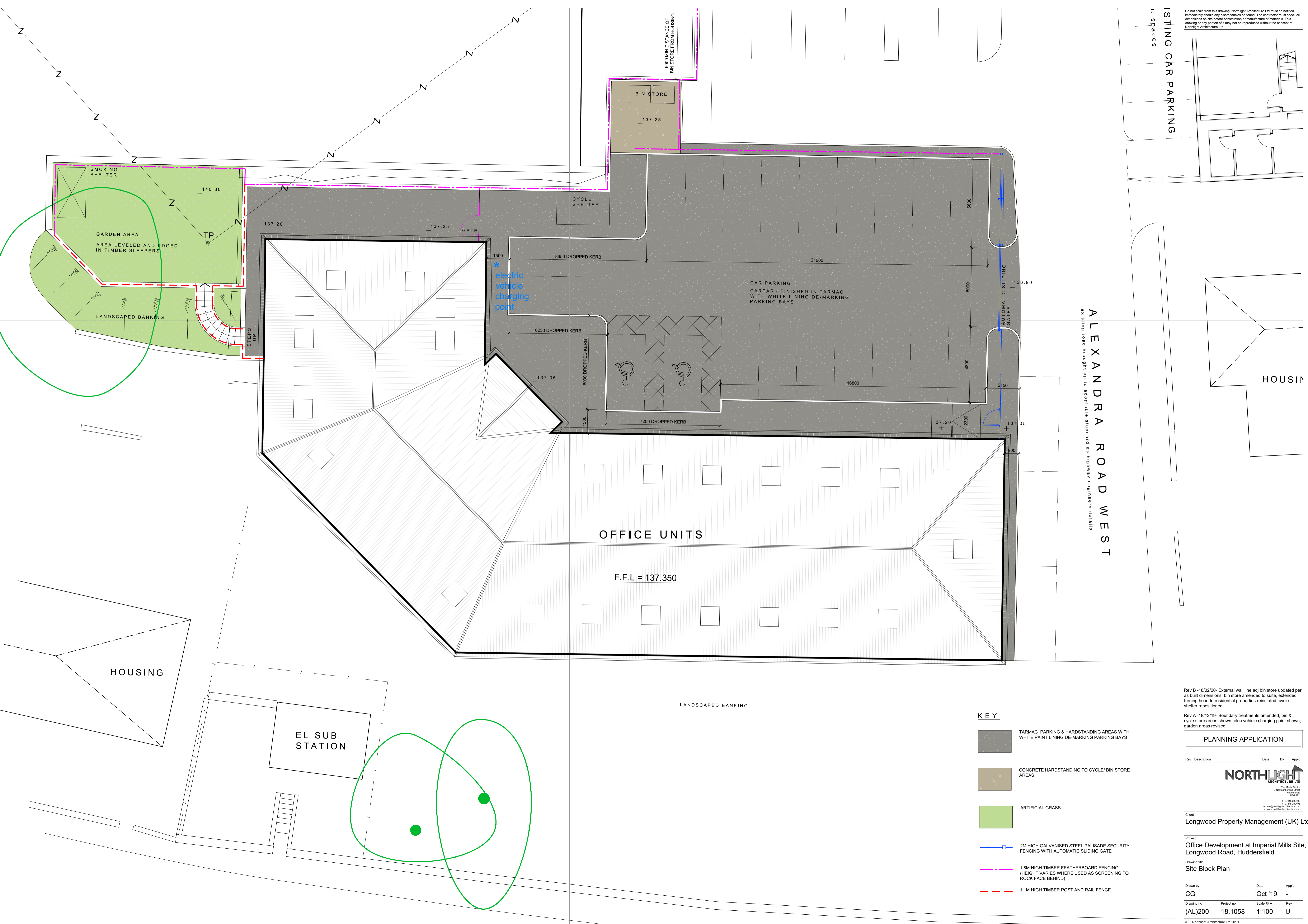


Do not scale from this drawing. Northlight Architecture Ltd must be notified immediately should any discrepancies be found. The contractor must check all dimensions on site before construction or manufacture of materials. This drawing or any portion of it may not be reproduced without the consent of Northlight Architecture Ltd.



ALEXANDRA ROAD WEST
existing road brought up to adoptable standard as highway engineers details

- KEY**
- TARMAC PARKING & HARDSTANDING AREAS WITH WHITE PAINT LINING DE-MARKING PARKING BAYS
 - CONCRETE HARDSTANDING TO CYCLE/ BIN STORE AREAS
 - ARTIFICIAL GRASS
 - 2M HIGH GALVANISED STEEL PALISADE SECURITY FENCING WITH AUTOMATIC SLIDING GATE
 - 1.8M HIGH TIMBER FEATHERBOARD FENCING (HEIGHT VARIES WHERE USED AS SCREENING TO ROCK FACE BEHIND)
 - 1.1M HIGH TIMBER POST AND RAIL FENCE

Rev B -18/02/20- External wall line adj bin store updated per as built dimensions, bin store amended to suite, extended turning head to residential properties reinstated, cycle shelter repositioned.

Rev A -18/12/19- Boundary treatments amended, bin & cycle store areas shown, elec vehicle charging point shown, garden areas revised

PLANNING APPLICATION

| Rev | Description | Date | By | App'd |
|-----|-------------|------|----|-------|
| | | | | |



Client
Longwood Property Management (UK) Ltd

Project
Office Development at Imperial Mills Site, Longwood Road, Huddersfield

Drawing title
Site Block Plan

| | | |
|------------------------|------------------------|---------------------|
| Drawn by CG | Date Oct '19 | App'd - |
| Drawing no. (AL)200 | Project no. 18.1058 | Scale @ A1 1:100 |
| | | Rev B |