

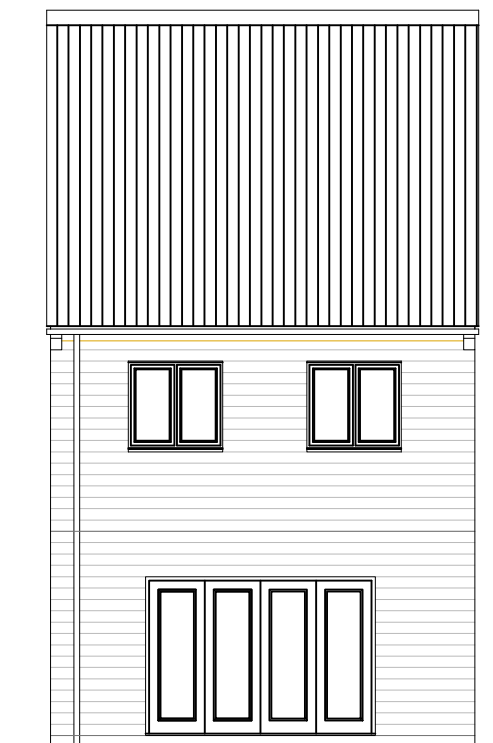
Proposed Residential Development at Halifax Road, Liversedge



Front Elevation



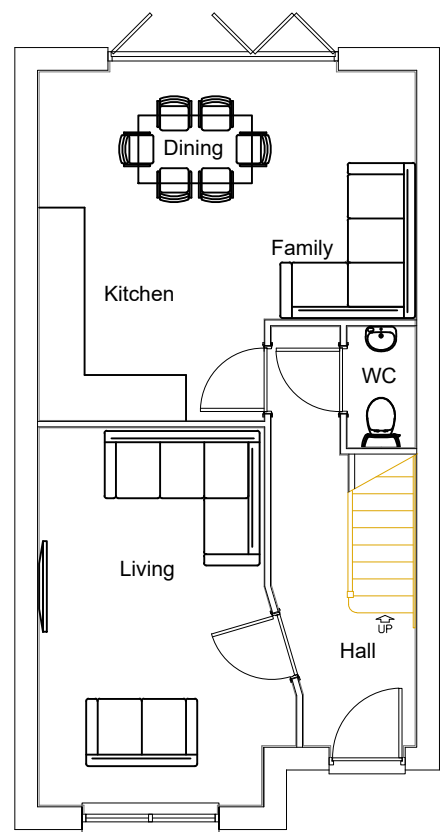
Side Elevation



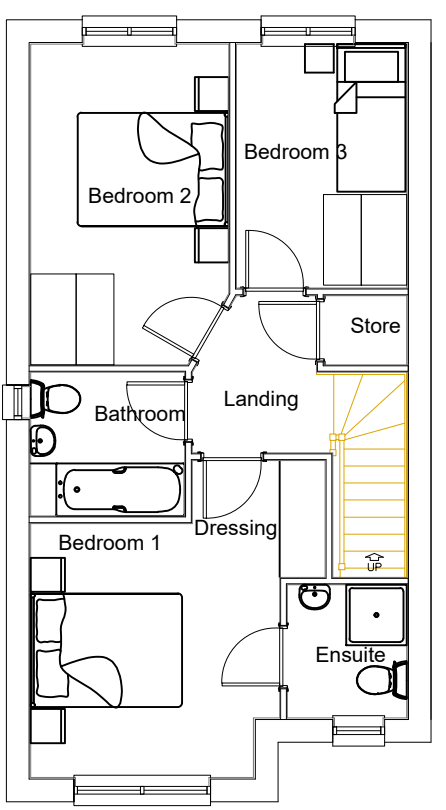
Rear Elevation



Side Elevation



Ground Floor Plan



First Floor Plan

Rev	By	Note	Date



Thorp Arch Grange Walton Road Thorp Arch Wetherby LS23 7BA
 T: 01937 543 595 F: 01937 582 333 E: info@berkeleydeveer.co.uk

PROJECT	Halifax Road, Liversedge		
TITLE	B301 House Type		
DATE	July 2018	SCALE	1:100@A3
DWG NO	BDV.18.B301.02	REVISION	-
DRAWN	JT	CHECKED	

DO NOT SCALE FROM DRAWINGS. ANY DISCREPANCIES TO BE NOTIFIED TO THE ARCHITECTS. COPYRIGHT RESERVED

B301 House Type