

# BLACKMOORFOOT ROAD

LANDSCAPE AND VISUAL IMPACT ASSESSMENT  
FIGURES & PHOTOMONTAGES

FEBRUARY 2018

**APPENDIX 1.0**





|  |    |
|--|----|
| 1.1 Site Location and Context                                | 4  |
| 1.2 Strategic sites, other site allocations and designations | 5  |
| 1.3 Landscape Character - National/ County Level             | 6  |
| 1.4 Landscape Character - District Level                     | 7  |
| 1.5 Landscape Character - Local Level                        | 8  |
| 1.6 Environmental Designations                               | 9  |
| 1.7 Site Features  | 10 |
| 1.8 Listed Buildings   | 11 |
| 1.9 Townscape Character: Urban Grain/ Levels                 | 12 |
| 1.10 Townscape Character: Urban Grain/ Levels                | 13 |
| 1.11 Townscape Character: Urban Grain/ Levels                | 14 |
| 1.12 Townscape Character: Edge Conditions                    | 15 |
| 1.13 Townscape Character: Edge Conditions                    | 16 |
| 1.14 Townscape Character: Edge Conditions                    | 17 |
| 1.15 Topography  | 18 |
| 1.16 Open Space & Public Rights of Way                       | 19 |
| 1.17 Parameters Plan - All Parameters                        | 20 |
| 1.18 Illustrative Masterplan                                 | 21 |
| 1.19 Principal Viewpoints                                    | 22 |
| 1.20 Distance Viewpoints                                     | 23 |
| 1.21 Photoviewpoints   | 24 |
| 1.22 Photoviewpoints   | 25 |
| 1.23 Photoviewpoints   | 26 |

CONTENTS



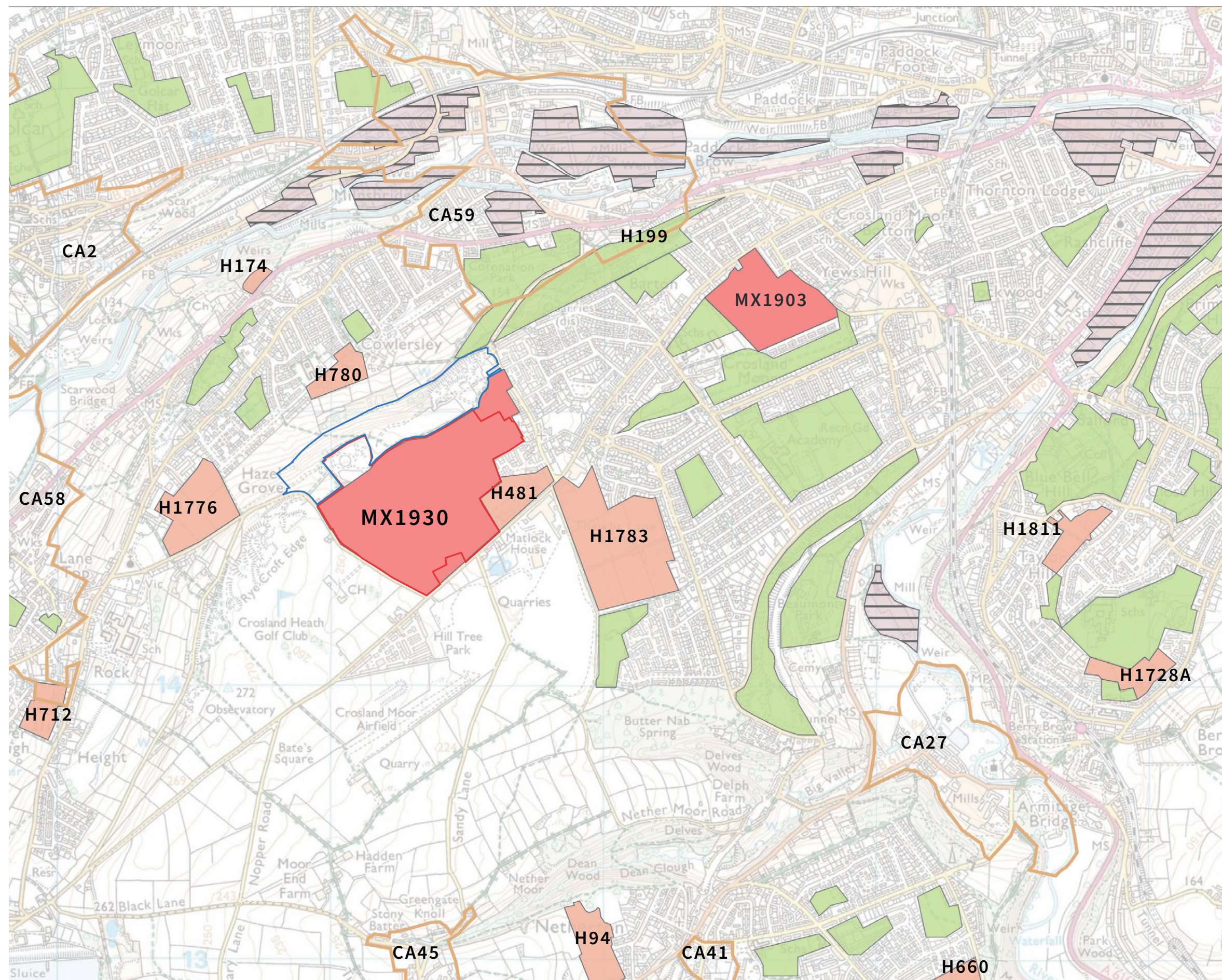


## 1.1 SITE LOCATION AND CONTEXT



KEY

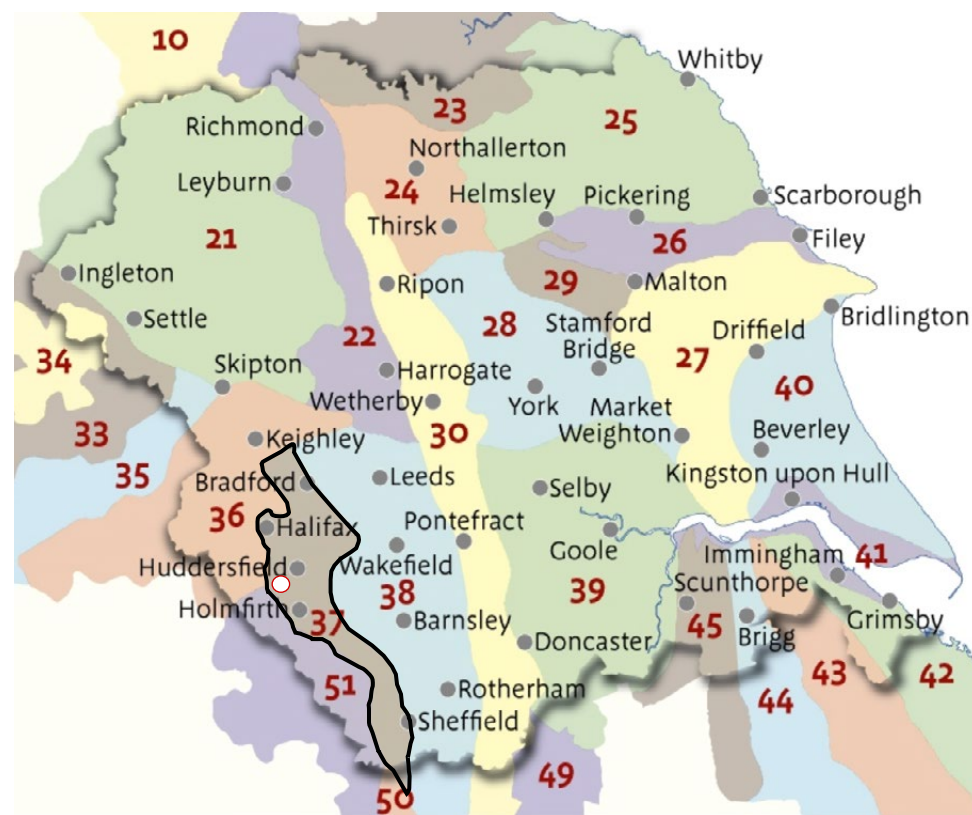
- Application site boundary
- Greenbelt land within land ownership
- Allocated housing site
- Allocated mixed use site
- Priority employment area
- Urban open space
- Conservation area



SOURCE: KIRKLEES COUNCIL

## 1.2 STRATEGIC SITES, OTHER SITE ALLOCATIONS AND DESIGNATIONS

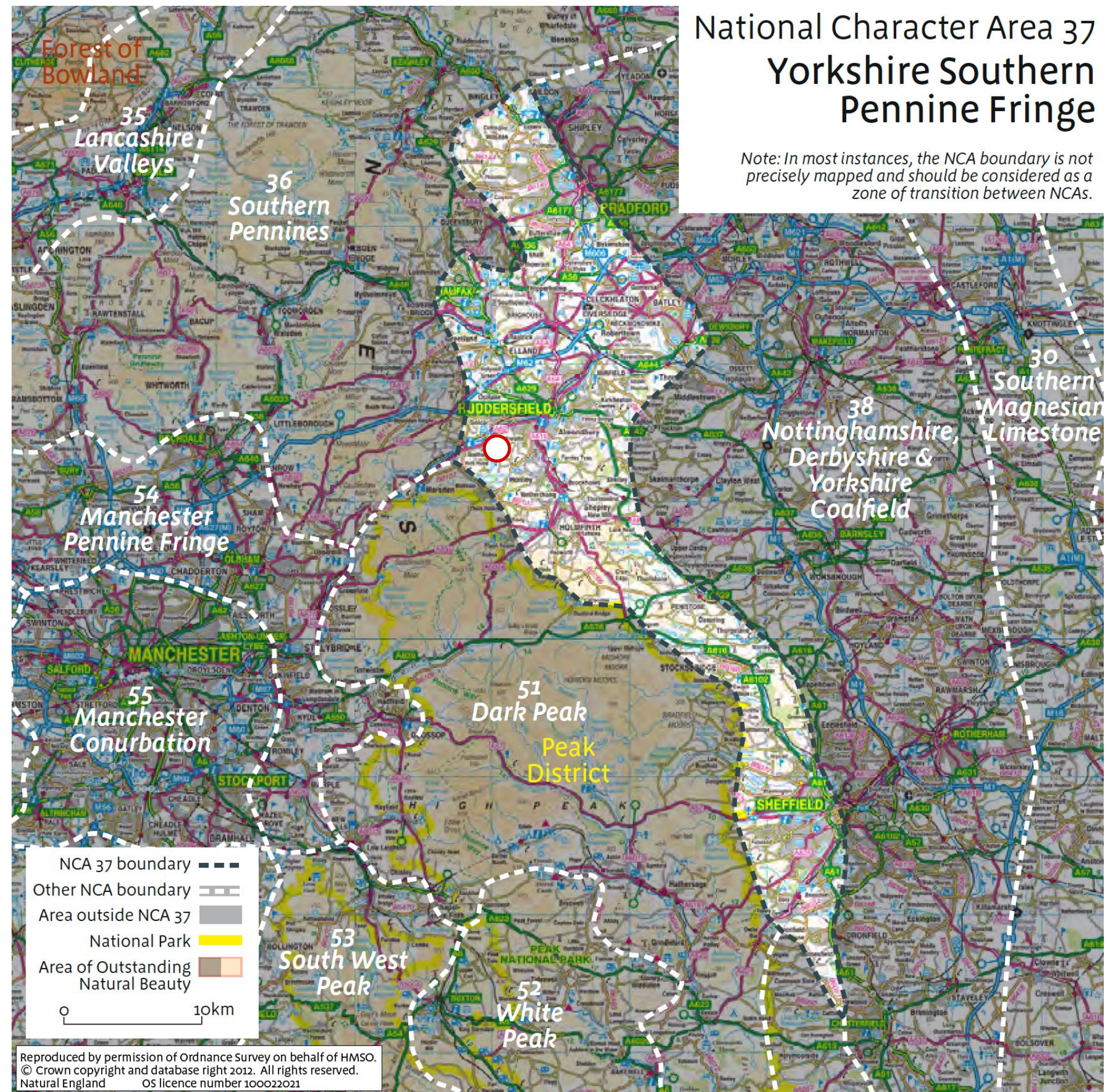




SOURCE: NATURAL ENGLAND

## National Character Area 37 Yorkshire Southern Pennine Fringe

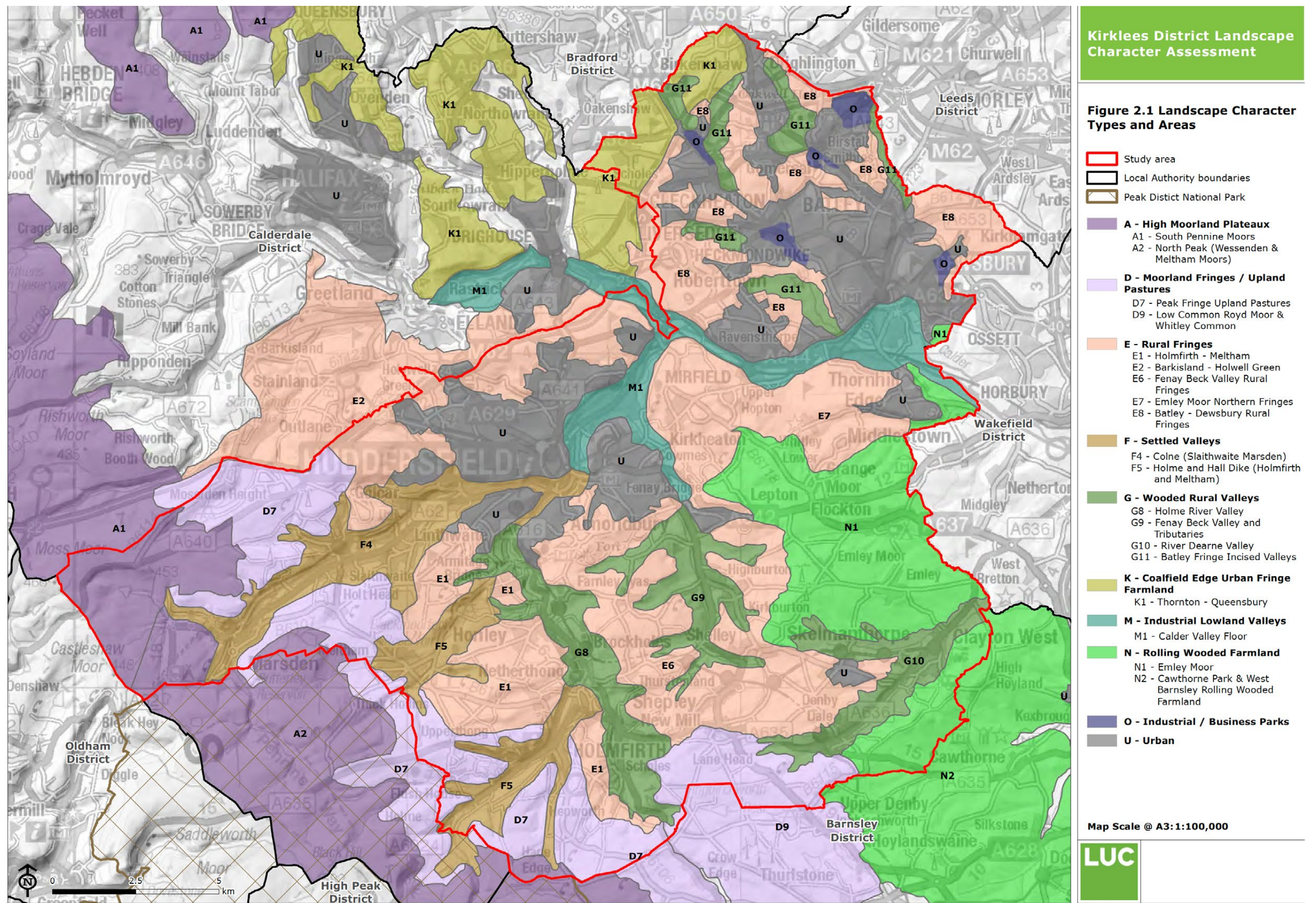
Note: In most instances, the NCA boundary is not precisely mapped and should be considered as a zone of transition between NCAs.



SOURCE: NATURAL ENGLAND

### 1.3 LANDSCAPE CHARACTER - NATIONAL/COUNTY LEVEL





## 1.4 LANDSCAPE CHARACTER - DISTRICT LEVEL



**1. Traditional farming [grazing, silage and hay making]** – which is principally pastoral plateau farmland - mixed agricultural fields, hay and grazing land with occasional groups of broadleaf trees with isolated small trees occasionally on field boundaries.

**2. Industrial [fireworks factory]** - The key characteristics are an industrial firework factory compound, access roads grass and scrub, with occasional groups of trees and scrub between shed with areas of rough grassland with areas of naturalised vegetation and rose bay willow herb. There appears to be little landscape maintenance to the storage area and outer lying sheds.

**3. Managed recreational land and small scale agricultural fields** - Character Area 3 is essentially a mix of managed recreational land associated with the Fireworks Factory and small-scale agricultural fields used for with grazing, which are bounded by stone walls. A public footpath runs west to east along the southern boundary of the fields which is also defined by a stone boundary wall and trees.

**4. Green Belt** - Character Area 4, to the north of the Firework Factory, which will remain within the Green Belt, is also a distinct landscape character area. This area is characterized by sloping and undulating land around the upper slopes and crest of Crossland Hill.

KEY

 Application site boundary

 Greenbelt land within land ownership



AERIAL SOURCE: GOOGLE MAPS

# 1.5 LANDSCAPE CHARACTER - LOCAL LEVEL