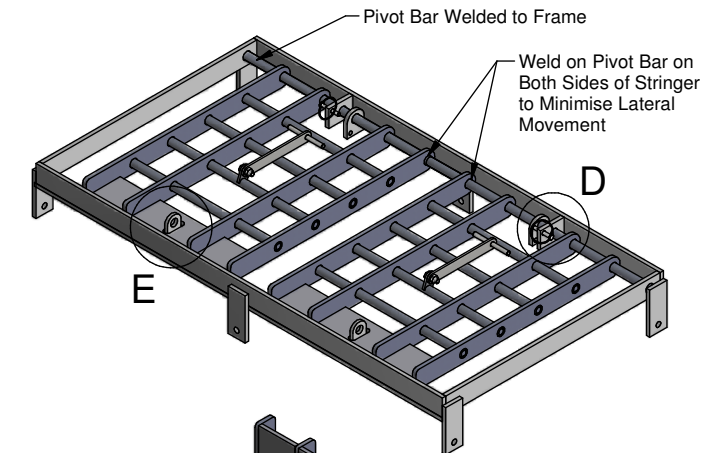
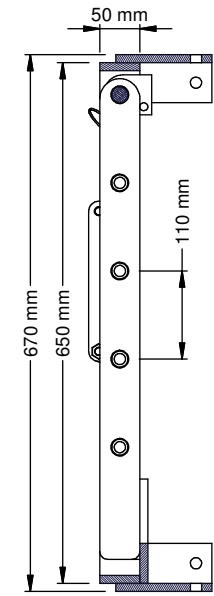
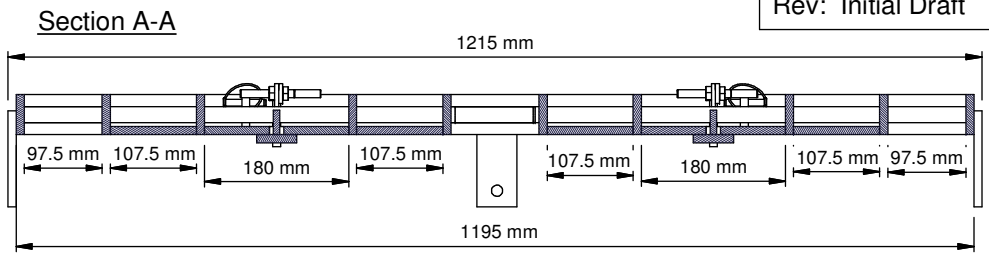
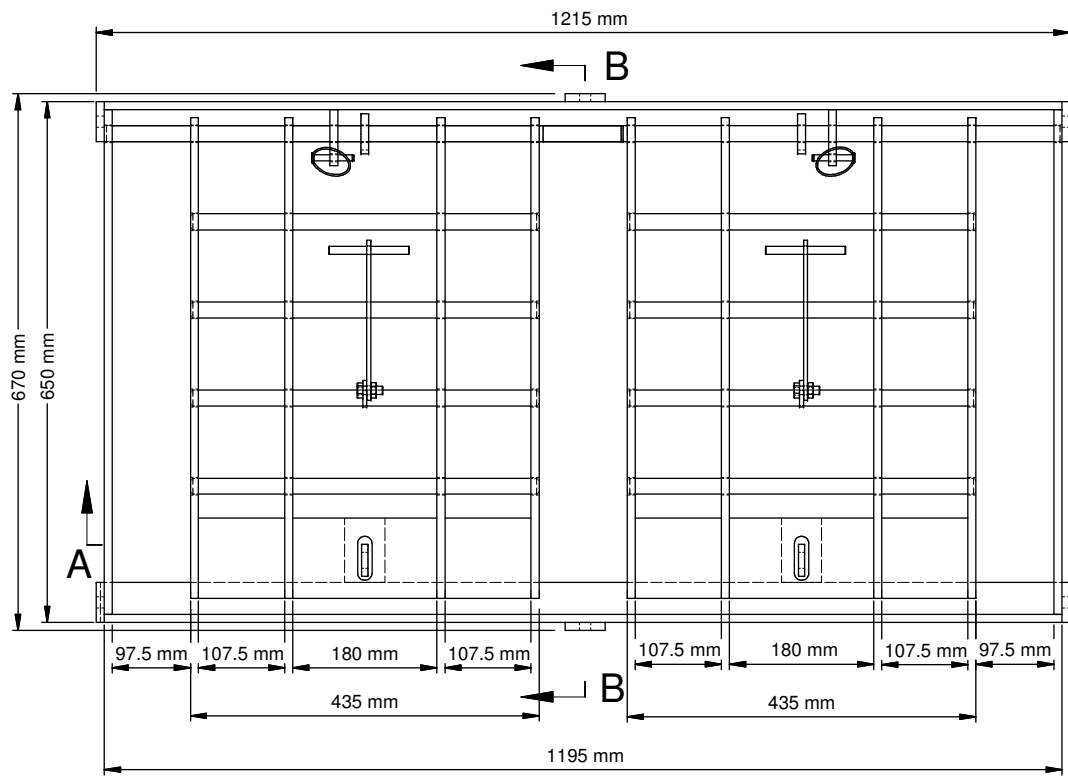
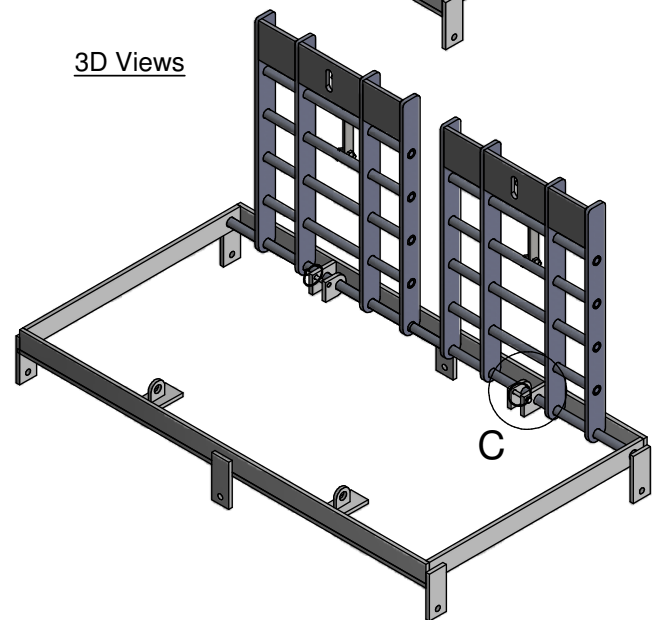


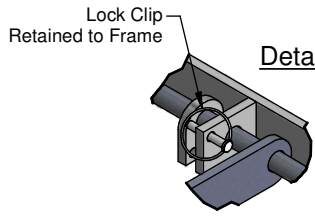
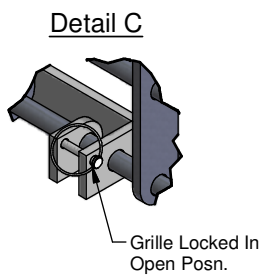
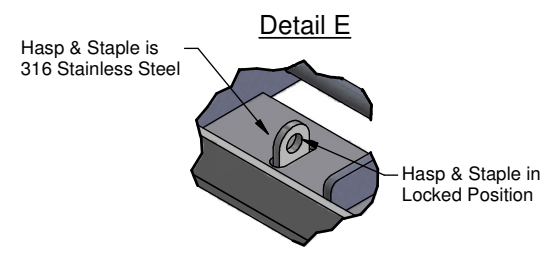
To Suit KD19 - Retro Fit



3D Views



Section B-B



Detail D

PROJECT: Product Development		REVISION:	DATE:
LOADING: FACTA Class B - 44 Tonne GLVV		REVISION: Initial Draft	DATE:
DESCRIPTION: KD19 Retro Fit - Prison Grille 1220x675mm	LOAD TEST VALIDATION: Y N	PETER SAVAGE LIMITED LIBERTY HOUSE, LIBERTY BUSINESS PARK, ATTLEBOROUGH, NUNEATON, WARWICKSHIRE, CV11 6RZ, F.A.C.T.A. Founder Members TEL: 024 7654 1777 FAX: 024 7637 5250 EMAIL: design@peter-savage.co.uk www.peter-savage.co.uk	
MATERIAL: Mild Steel to BS EN ISO 1401:1999	TOLERANCE: ± 0.1mm FOR SPACINGS	DRAWN BY: TK	ISO 9001
DWG No: IS 12370dw	DATE: 13 Jun 17	DESIGNED BY: J.Clarke	