

■ COPYRIGHT
 THE DRAWING IS THE SOLE COPYRIGHT OF KILMARTIN PLOWMAN ARCHITECTS & PARTNERS LIMITED. ALL RIGHTS RESERVED. NO PART OF THIS DRAWING IS TO BE REPRODUCED OR TRANSMITTED IN ANY FORM OR BY ANY MEANS, ELECTRONIC OR MECHANICAL, INCLUDING PHOTOCOPYING, RECORDING, OR BY ANY INFORMATION STORAGE AND RETRIEVAL SYSTEM, WITHOUT THE WRITTEN PERMISSION OF KILMARTIN PLOWMAN ARCHITECTS & PARTNERS LIMITED.
 DO NOT SCALE FROM THIS DRAWING. ANY DISCREPANCIES ON RELIABLE DRAWINGS SHALL PREVAIL.
 WORK AND MATERIALS MUST COMPLY WITH THE CURRENT BUILDING REGULATIONS AND CODES OF PRACTICE. ALL OTHERS SHALL BE RESPONSIBLE FOR OBTAINING NECESSARY CONSENTS FROM THE RELEVANT AUTHORITIES AND OTHER SUB CONTRACTORS INFORMATION.



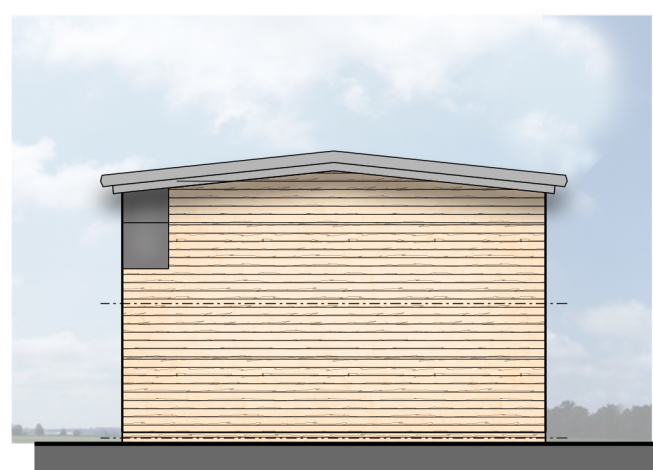
FRONT ELEVATION



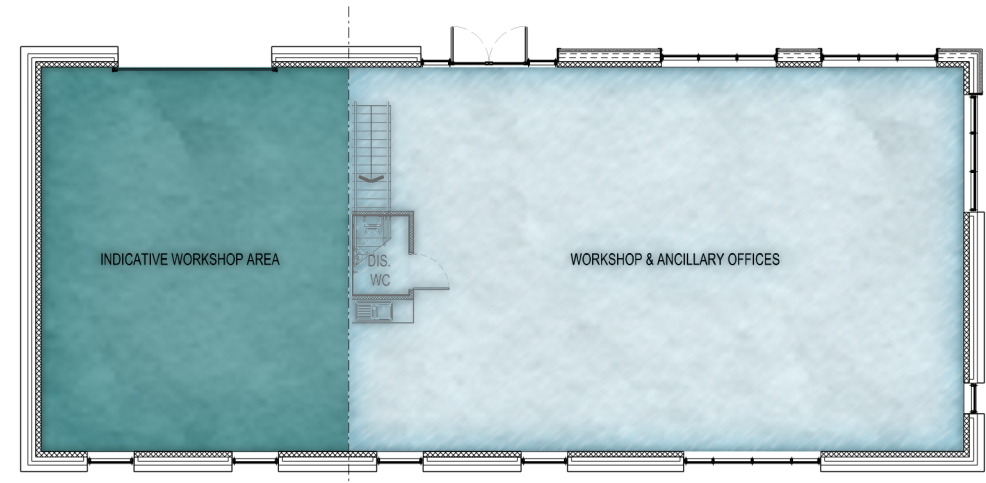
SIDE ELEVATION



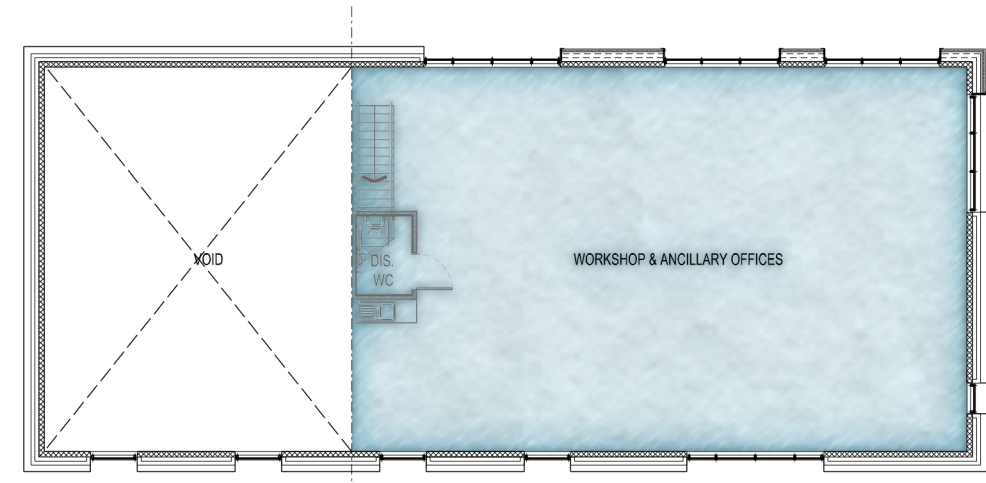
REAR ELEVATION



SIDE ELEVATION



GROUND FLOOR PLAN



FIRST FLOOR PLAN

REV	DRAWN	DATE	DESCRIPTION
A	AB	21.02.18	MATERIAL AND GLAZING AMENDMENTS AT PLANNER'S REQUEST

KPP
 ARCHITECTS
 KILMARTIN PLOWMAN & PARTNERS LIMITED

- LODGE HOUSE 12 TOWN STREET HORSFORTH LEEDS LS18 4RJ
- T: 0113 239 0460 F: 0113 239 0475
- E: architects@kpp-leeds.co.uk
- W: www.kpp-leeds.co.uk

PROJECT TITLE: RESIDENTIAL AND MIXED USE REDEVELOPMENT OF DOBROYD MILLS
 UNIT 1 PLANS AND ELEVATIONS

■ PLANNING ■ PROJECTS2D	SCALE: 1:100 @A1	■ DR
PROJECT: - 2009	YEAR: - 2022	DATE: FEB'18
		SHEET: - A