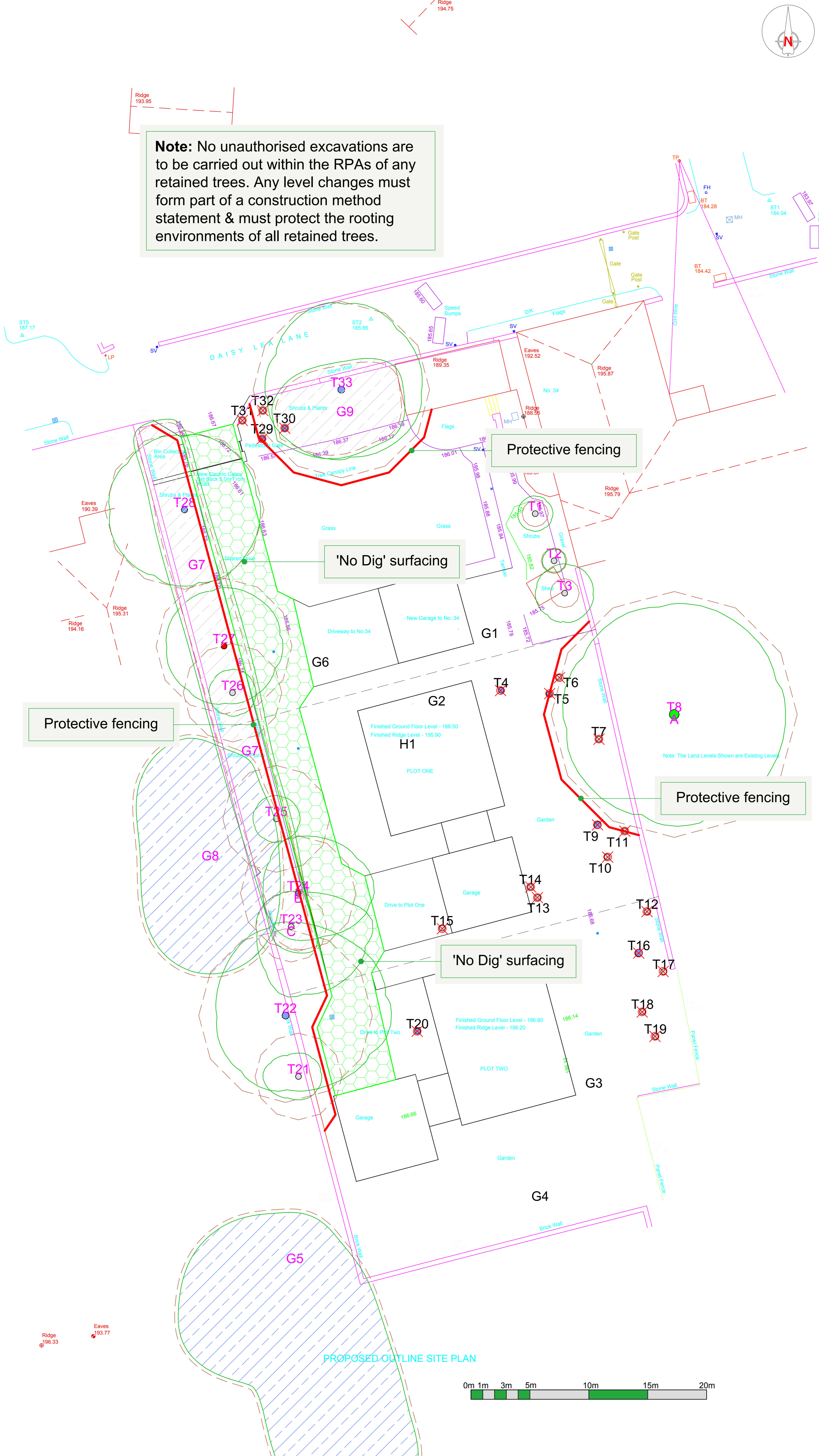


**Note:** No unauthorised excavations are to be carried out within the RPAs of any retained trees. Any level changes must form part of a construction method statement & must protect the rooting environments of all retained trees.



**Tree Categories**

Trees are categorised in accordance with the cascade chart in Table 1 of the British Standard BS 5837:2012 'Trees in relation to design, demolition and construction - Recommendations'

Category 'U' - Trees in such condition that they cannot realistically be retained as living trees in context of the current land use for longer than 10 years.

Category 'A' - Trees of high quality with an estimated remaining life expectancy of at least 40 years.

Category 'B' - Trees of moderate quality with an estimated remaining life expectancy of at least 20 years.

Category 'C' - Trees of low quality with an estimated remaining life expectancy of at least 10 years, or young trees with a stem diameter below 150mm.

**Root Protection Area**

In order to avoid damage to the roots or rooting environment of retained trees, the Root Protection Areas (RPAs) should be plotted around each of the category A, B and C trees. This is a minimum area in m<sup>2</sup> which should be left undisturbed around each retained tree.

The RPA is calculated using the British Standard BS 5837:2012 'Trees in relation to design, demolition and construction - Recommendations'.

The calculated RPA is capped to 707m<sup>2</sup>, which is the equivalent to a circle with a radius of 15m. Where there appears to be restrictions to root growth the root protection area is reshaped to more accurately reflect the likely distribution of the roots.

**Tree Protection Area**

**KEEP OUT**

Do **not** move this fence

(TOWN & COUNTRY PLANNING ACT 1990)  
TREES ENCLOSED BY THIS FENCE ARE PROTECTED BY PLANNING CONDITIONS AND/OR ARE THE SUBJECT OF A TREE PRESERVATION ORDER.  
CONTRAVENTION OF A TREE PRESERVATION ORDER MAY LEAD TO CRIMINAL PROSECUTION

ANY INCURSION INTO THE PROTECTED AREA MUST BE WITH THE WRITTEN PERMISSION OF THE LOCAL PLANNING AUTHORITY

**Protective Fencing**

To be erected prior to the commencement of all works on site, and retained in place throughout construction.

Default specification: To comprise either 2.4m wooden site hoarding; or a 2.3m high scaffolding framework comprising of vertical and horizontal framework, well braced to resist impacts, with uprights to be spaced at a maximum of 3.0m intervals and driven into the ground by a minimum of 600mm. On to this, standard anti-climb welded mesh panels are to be securely fixed to each other with at least two scaffold clamps and to the scaffold framework with wire.

Secondary Specification: To comprise of 2m tall welded mesh panels on rubber or concrete feet. Panels are to be joined together using a minimum of two anti-tamper couplers, installed so that they can only be removed from inside the fence. The panels should be supported on the inner side by stabilizer struts, which should be attached to a base plate and secured with ground pins.

All weather notices should be erected at regular intervals on the weld mesh panels with words such as "Construction exclusion zone - Keep out".

**'No Dig' Surfacing**

Multi-dimensional confinement system.

Existing vegetation may be removed with hand tools or sprayed with an approved non residual herbicide such as 'Glyphosate'. The new hard surfacing will be constructed using a 'No Dig' surfacing situated entirely above the existing soil surface and where needed using a proprietary cellular confinement system (GeoWeb or similar) laid over a bi-axial geo-grid (tensar TriAx or similar). Prior to this any small hollows on the surface may be filled with clean sharp sand (not builders sand) to a maximum depth of 150mm. The 'GeoWeb' is to be back filled by hand with a no-fines aggregate of 20mm - 30mm. The area of 'GeoWeb' will be covered with a permeable geotextile fabric and the finished wearing course laid on top. Edge supports of an appropriate size and strength should be set above ground level and secured with haunching or steel pins driven into the ground. The outer edge of the supports may be banked up with clean top soil.

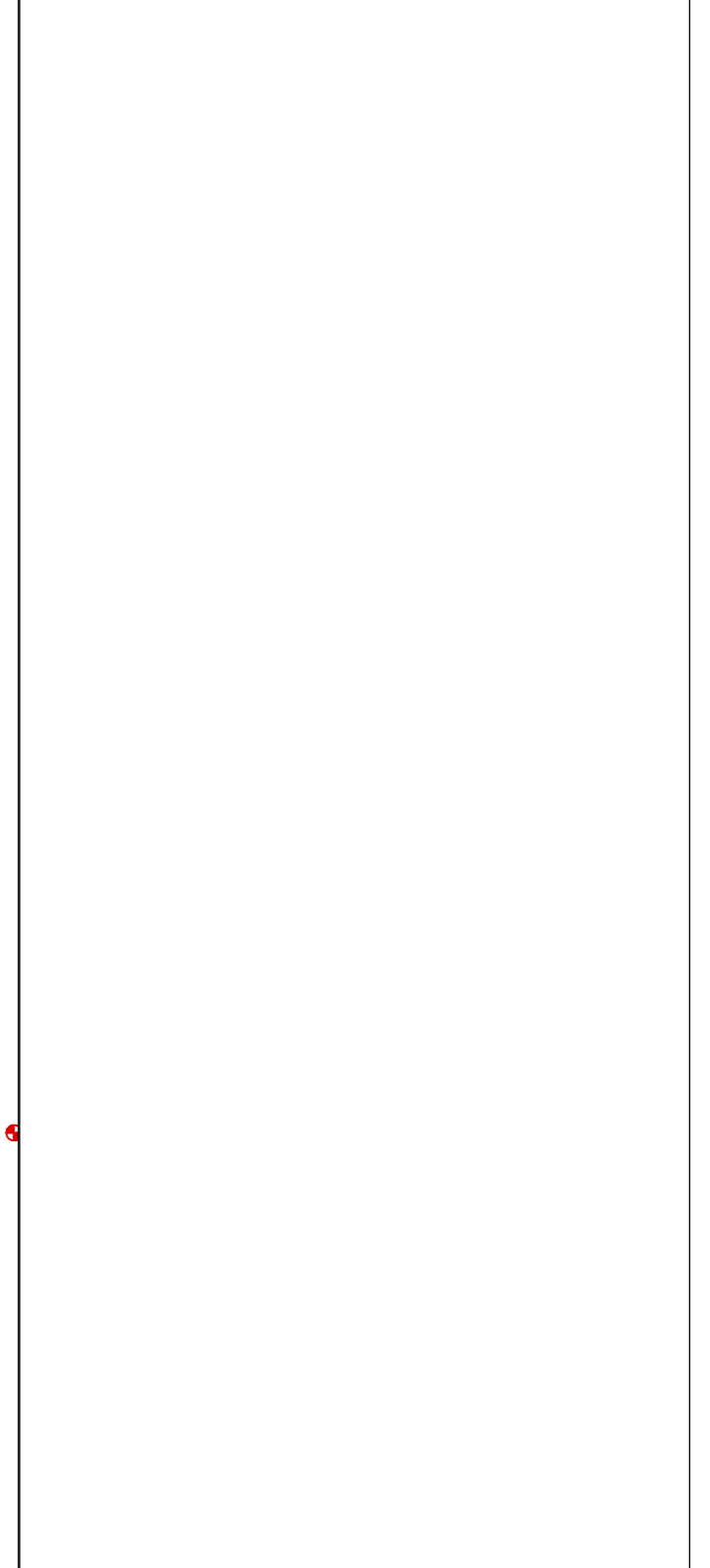
**Arboricultural Supervision**

The arboricultural consultant will be required to attend site to directly supervise all demolition and construction works that have to be undertaken within the root protection areas. This will include:

1. Pre-commencement site meeting.
2. Location of protective measures.
3. Installation of 'No Dig' hard surfacing.
4. Any excavations within or adjacent to RPAs, including foundations, hard surfacing or underground services.
5. Removal of protective measures and sign off.

**Arboricultural Method Statement**

Please refer to Arbtch Consulting Ltd. Tree Schedule and Arboricultural Method Statement, for full details on all surveyed trees and how all aspects of the development maybe implemented without detriment to retained trees.



**ARBTECH**

Unit 3, Well House Barns, Chester, CH4 0DH  
www.arbtech.co.uk, email@arbtech.co.uk, 01244 661170

Project:  
34 Daisy Lea Lane,  
Huddersfield,  
Yorkshire,  
HD3 3LP

Client:  
Betty Webb

Drawing:  
Tree Protection Plan

Based on:  
Proposed Plan 230916

Drawing No:  
Arbtech TPP 01

Date:  
Nov 2016

Scale:  
1:150 @ A1

Drawn:  
AST

**Key:**

Tree Nos.	T1	Tree Canopies	(Green Circle)	Trunks	(Black Circle)
RPAs:	Category 'U' trees	Category 'A' trees	(Red Circle)	Category 'B' trees	(Green Circle)
Category 'C' trees:	(Blue Circle)	Category 'B' trees:	(Grey Circle)	Location of removed trees:	(T4 with X)
Protective Fencing:	(Red Line)	'No Dig' hard surfacing:	(Green Grid)		

All dimensions should be checked on site. No responsibility can be accepted from this drawing. Please notify us of any discrepancies found. Arbtch Consulting Ltd. cannot be held responsible for inaccuracies in the data obtained in which this plan is based. This drawing is designed to reflect the progress of the layout or design only, and relates only to the protection of retained trees. This drawing is not to be used as a definitive part of the engineering or construction design or method statement. An architect or structural engineer should be consulted over any matters of construction, detailing or specification and for any standards or regulatory requirements relating to proposed structures, hard surfacing or underground services. This drawing was produced in colour - a monochrome copy should not be relied upon.

© Arbtch Consulting Ltd, 2016

