

## Appendix B

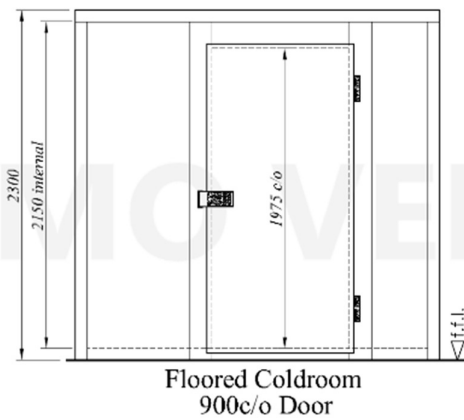
### Modular Walk-in Cold Room Details



Location for Proposed Coldrooms

(2no. 1500 x 2000 x 2300mm high)

(To be screened behind 2400mm High Close Vertically Boarded Rough Sawn Treated Timber Fence)



Elevation

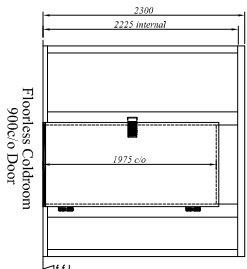
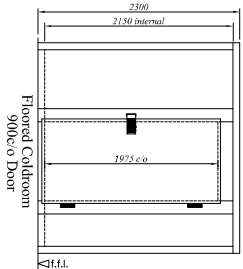
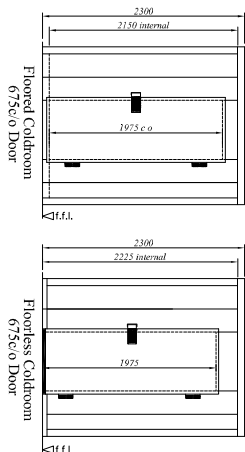


General View

**Pro-Line Coldroom Models**

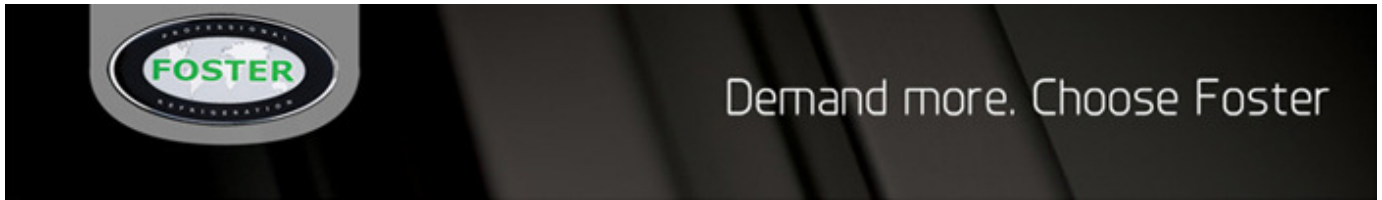
<p><b>PL1509</b></p>	<p><b>PL1812</b></p>	<p><b>PL2412</b></p>	<p><b>PL3012</b></p>	<p><b>PL3612</b></p>
<p><b>PL1515</b></p>	<p><b>PL1818</b></p>	<p><b>PL2418</b></p>	<p><b>PL3018</b></p>	<p><b>PL3618</b></p>
<p><b>PL1824</b></p>	<p><b>PL1830</b></p>	<p><b>PL2424</b></p>	<p><b>PL3024</b></p>	<p><b>PL3624</b></p>
<p><b>PL1836</b></p>	<p><b>PL1830</b></p>	<p><b>PL2430</b></p>	<p><b>PL3030</b></p>	<p><b>PL2436</b></p>

**Panel Specification:**  
 WALLS: 75mm insulation  
 2300mm panel height  
 External finish: White Powdered PVC-U laminate  
 Internal finish: White Fostite PVC-U laminate  
**CEILING:** 75mm insulation  
 External finish: White Powdered PVC-U laminate  
 Internal finish: Smooth Galv. Steel  
**FLOOR:** (Optional)  
 75mm insulation  
 Internal finish: 1.5mm Rippled Galv. Steel  
 External finish: Smooth Galv. Steel



**Foster Coldstones**  
 Holdings (Pty) Ltd, 1000 Strydom Road, 1601, Midrand, 2008, South Africa  
 E-mail: [enquiry@fostercoldstones.com](mailto:enquiry@fostercoldstones.com)  
 C.A.D. N.T.S. 38099101

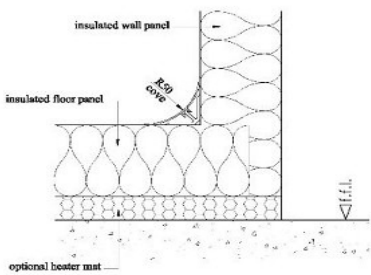
Project: **Pro Line S**  
 Standard Coldrooms  
 General Arrangements  
 Date: 10/05/2024  
 Drawn: **STD 052**



## Modular Floors

Foster modular floors are constructed from 1200mm wide panels with all-round tongue & groove joints and cam operated locks to draw the panels tightly together.

If required, modular floors can be recessed into the building floor to allow level entry:



Floor

Standard Modular

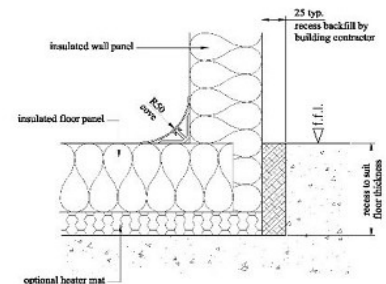


Fig. 3: Recessed Modular Floor

Recessed Modular Floor

- Standard stock floor panels comprise:
  - 75mm insulation
  - 1.5mm rigidised galvanised steel finish to the internal face
  - Smooth galvanised steel finish to the external face
- Floor panels are also available with 100mm insulation and a range of internal finishes to suit different applications (see below). Please note that Foster Coldstores do not recommend mild steel galvanised floors in acid / saline environments.

### Foster Refrigerator (UK Specifiers)

Oldmedow Road  
King's Lynn  
Norfolk  
PE30 4JU  
United Kingdom

Telephone: **0843 216 8866**  
Facsimile: **0843 216 4704**

projects@foster-uk.com

### Foster Refrigerator (Coldstores)

Oldmedow Road  
King's Lynn  
Norfolk  
PE30 4JU  
United Kingdom

Telephone: **01553 698278**  
Facsimile: **0843 216 4704**

projects@fostercoldstores.com



Demand more. Choose Foster

## Walls

Foster coldroom walls are constructed from 1200mm wide modular panels with tongue & groove joints & cam operated locks to draw the panels tightly together.

Standard stock wall panels are available with:

- 75mm insulation
- white 'food-safe' laminate finish to internal & external faces
- choice of 2100, 2300 & 2600mm heights

However, this need not limit the design as the following wall panel options are readily available when specified:

- Any height up to 6000mm
- Smooth 304 Stainless Steel finish to one or both faces
- 100mm insulation

Please note the following when specifying wall panels:

Wall panels over 3700mm high are only available with 100mm insulation

Stainless Steel finish is only available for panels up to 4000mm high

Minor fixings can be made into the wall panel cladding but reinforcing should be specified for hanging lightweight items like hand wash basins

[More Wall Options](#)

[ [Print](#) ]

### **Foster Refrigerator (UK Specifiers)**

Oldmedow Road  
King's Lynn  
Norfolk  
PE30 4JU  
United Kingdom

Telephone: **0843 216 8866**

Facsimile: **0843 216 4704**

projects@foster-uk.com

### **Foster Refrigerator (Coldstores)**

Oldmedow Road  
King's Lynn  
Norfolk  
PE30 4JU  
United Kingdom

Telephone: **01553 698278**

Facsimile: **0843 216 4704**

projects@fostercoldstores.com



Demand more. Choose Foster

## Ceilings

Foster coldroom ceilings are constructed from 1200mm wide modular panels with all-round tongue & groove joints & cam operated locks to draw the panels tightly together.

Standard stock ceiling panels comprise:

- 75mm insulation
- white 'food-safe' laminate finish to the internal face
- smooth galvanised steel finish to the external face

Other options available on request include:

- 100mm insulation
- Smooth 304 Stainless Steel finish to the internal face
- PIR insulated panels

The maximum unsupported length span for modular ceiling panels is:

- 4200mm for 75mm insulation
- 6000mm for 100mm insulation

[More Ceiling Options Including longer spans](#)

[ [Print](#) ]

### **Foster Refrigerator (UK Specifiers)**

Oldmedow Road  
King's Lynn  
Norfolk  
PE30 4JU  
United Kingdom

Telephone: **0843 216 8866**  
Facsimile: **0843 216 4704**

[projects@foster-uk.com](mailto:projects@foster-uk.com)

### **Foster Refrigerator (Coldstores)**

Oldmedow Road  
King's Lynn  
Norfolk  
PE30 4JU  
United Kingdom

Telephone: **01553 698278**  
Facsimile: **0843 216 4704**

[projects@fostercoldstores.com](mailto:projects@fostercoldstores.com)



Demand more. Choose Foster

## Standard Coldroom Door

Hinged Single Leaf Door in a Modular Jamb



<b>Insulation</b>	110mm thickness Polyurethane
<b>Finish options</b>	0.55mm White foodsafe laminate 0.7mm 304 Stainless steel
<b>Furniture</b>	Standard - Grey polycarbon Option - Chrome plates
<b>Locks</b>	Integral to either type of handle finish as standard
<b>Frame</b>	Insulated jamb provides a flush finish with adjacent wall panels
<b>Heaters</b>	Standard on all rooms operating below -20C

**Choice of standard opening sizes available;**

**Widths** 600, 675, 800 & 900mm

**Heights** 1750, 1825 & 1975mm

Other sizes available on request.

**Foster Refrigerator (UK Specifiers)**

Oldmedow Road  
King's Lynn  
Norfolk  
PE30 4JU  
United Kingdom

Telephone: **0843 216 8866**  
Facsimile: **0843 216 4704**

**Foster Refrigerator (Coldstores)**

Oldmedow Road  
King's Lynn  
Norfolk  
PE30 4JU  
United Kingdom

Telephone: **01553 698278**  
Facsimile: **0843 216 4704**

projects@foster-uk.com

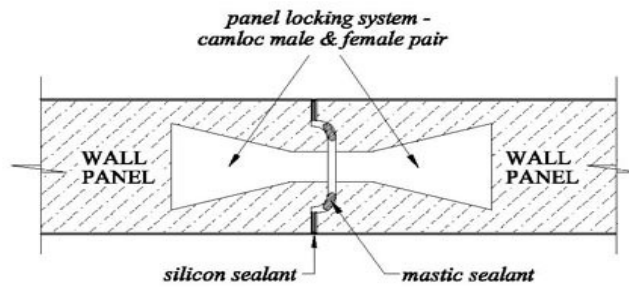
projects@fostercoldstores.com



Demand more. Choose Foster

## Panel Joints

Each panel is locked securely to adjacent panels and drawn tightly together by cam-operated locks. Two beads of mastic sealer are applied to the female recess of each panel before locking tight to the male profile of the next panel. A silicone sealer is applied between the returned metal edges of the panels inside and outside the coldroom to prevent any ingress of moisture.



### Standard Lock Joint

Standard lock joint detail applies to wall, ceiling and floor joint applications

[More Panel Joint Options](#)

[\[ Print \]](#)

#### Foster Refrigerator (UK Specifiers)

Oldmedow Road  
King's Lynn  
Norfolk  
PE30 4JU  
United Kingdom

Telephone: **0843 216 8866**  
Facsimile: **0843 216 4704**

[projects@foster-uk.com](mailto:projects@foster-uk.com)

#### Foster Refrigerator (Coldstores)

Oldmedow Road  
King's Lynn  
Norfolk  
PE30 4JU  
United Kingdom

Telephone: **01553 698278**  
Facsimile: **0843 216 4704**

[projects@fostercoldstores.com](mailto:projects@fostercoldstores.com)