

Operator  
Telephone  
Fax  
e-Mail

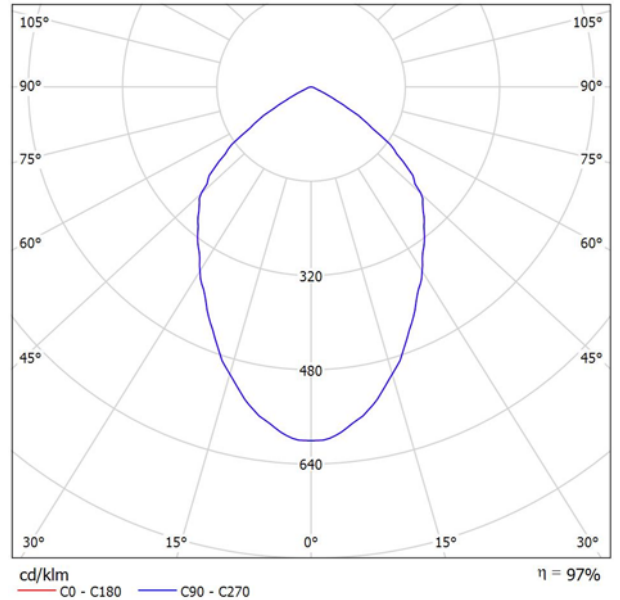
**NS Cree NS-600A-6K-L60 / Luminaire Data Sheet**

See our luminaire catalog for an image of the luminaire.



Luminaire classification according to CIE: 100  
CIE flux code: 65 96 100 100 97

Luminous emittance 1:



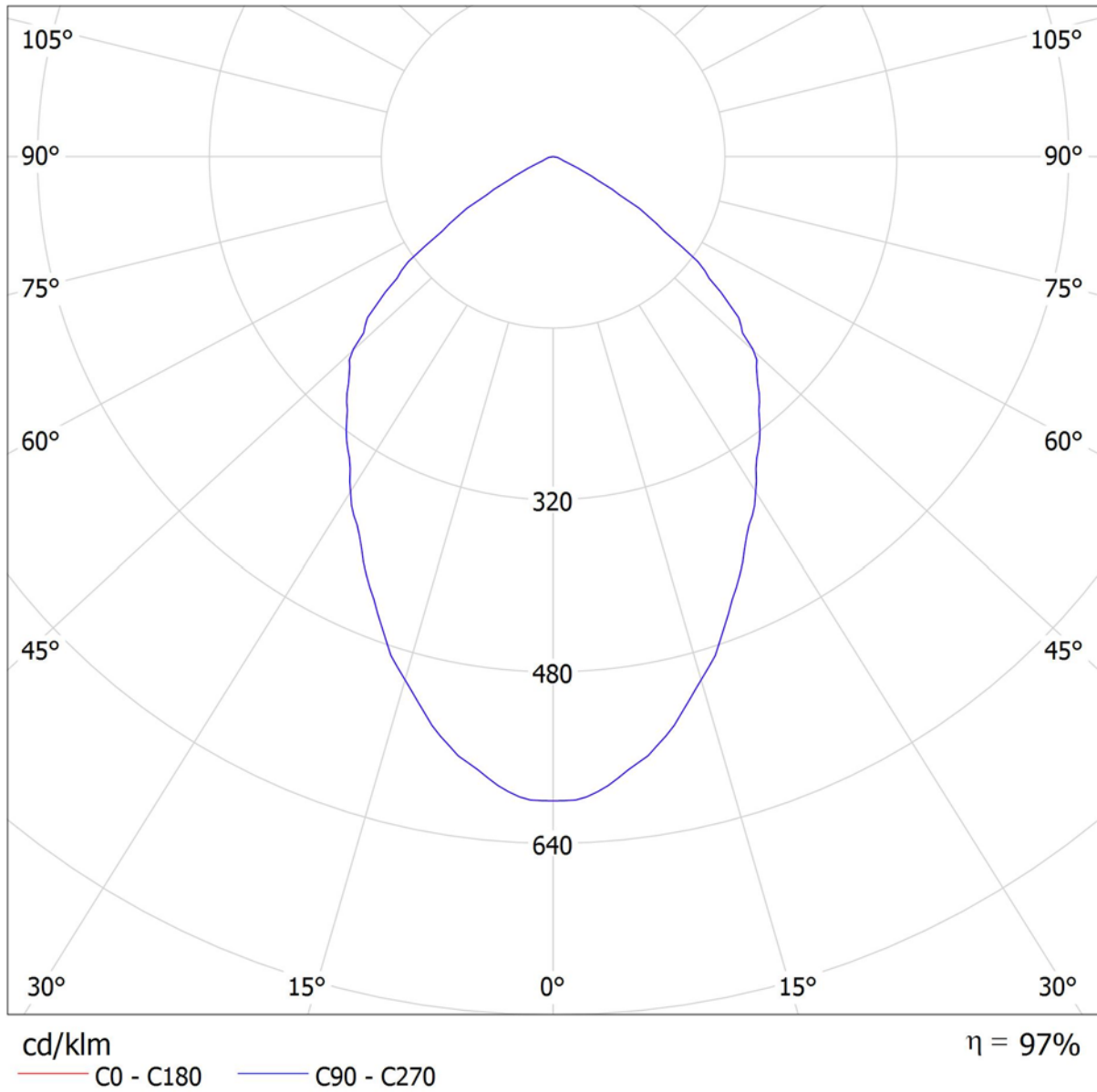
Luminous emittance 1:

Glare Evaluation According to UGR											
ρ Ceiling	70	70	50	50	30	70	70	50	50	30	
ρ Walls	50	30	50	30	30	50	30	50	30	30	
ρ Floor	20	20	20	20	20	20	20	20	20	20	
Room Size X Y	Viewing direction at right angles to lamp axis					Viewing direction parallel to lamp axis					
2H	2H	29.8	30.9	30.1	31.1	31.3	29.8	30.9	30.1	31.1	31.3
	3H	29.7	30.6	30.0	30.9	31.1	29.7	30.6	30.0	30.9	31.1
	4H	29.6	30.5	30.0	30.8	31.1	29.6	30.5	30.0	30.8	31.1
	6H	29.6	30.4	29.9	30.7	31.0	29.6	30.4	29.9	30.7	31.0
	8H	29.6	30.3	29.9	30.6	30.9	29.6	30.3	29.9	30.6	30.9
4H	12H	29.5	30.2	29.9	30.6	30.9	29.5	30.2	29.9	30.6	30.9
	2H	29.8	30.7	30.1	31.0	31.2	29.8	30.7	30.1	31.0	31.2
	3H	29.7	30.5	30.1	30.8	31.1	29.7	30.5	30.1	30.8	31.1
	4H	29.7	30.3	30.1	30.7	31.0	29.7	30.3	30.1	30.7	31.0
	6H	29.7	30.2	30.1	30.6	31.0	29.7	30.2	30.1	30.6	31.0
8H	12H	29.6	30.0	30.0	30.4	30.9	29.6	30.0	30.0	30.4	30.9
	4H	29.6	30.1	30.0	30.5	30.9	29.6	30.1	30.0	30.5	30.9
	6H	29.6	30.0	30.0	30.4	30.8	29.6	30.0	30.0	30.4	30.8
	8H	29.5	29.9	30.0	30.3	30.8	29.5	29.9	30.0	30.3	30.8
	12H	29.5	29.8	30.0	30.2	30.7	29.5	29.8	30.0	30.2	30.7
12H	4H	29.6	30.0	30.0	30.4	30.8	29.6	30.0	30.0	30.4	30.8
	6H	29.5	29.9	30.0	30.3	30.8	29.5	29.9	30.0	30.3	30.8
	8H	29.5	29.8	30.0	30.2	30.7	29.5	29.8	30.0	30.2	30.7
Variation of the observer position for the luminaire distances S											
S = 1.0H	+0.6 / -0.8					+0.6 / -0.8					
S = 1.5H	+1.9 / -5.7					+1.9 / -5.7					
S = 2.0H	+3.6 / -11.0					+3.6 / -11.0					
Standard table	BK00					BK00					
Correction Summand	11.3					11.3					
Corrected Glare Indices referring to 48000lm Total Luminous Flux											

Operator  
Telephone  
Fax  
e-Mail

**NS Cree NS-600A-6K-L60 / LDC (Polar)**

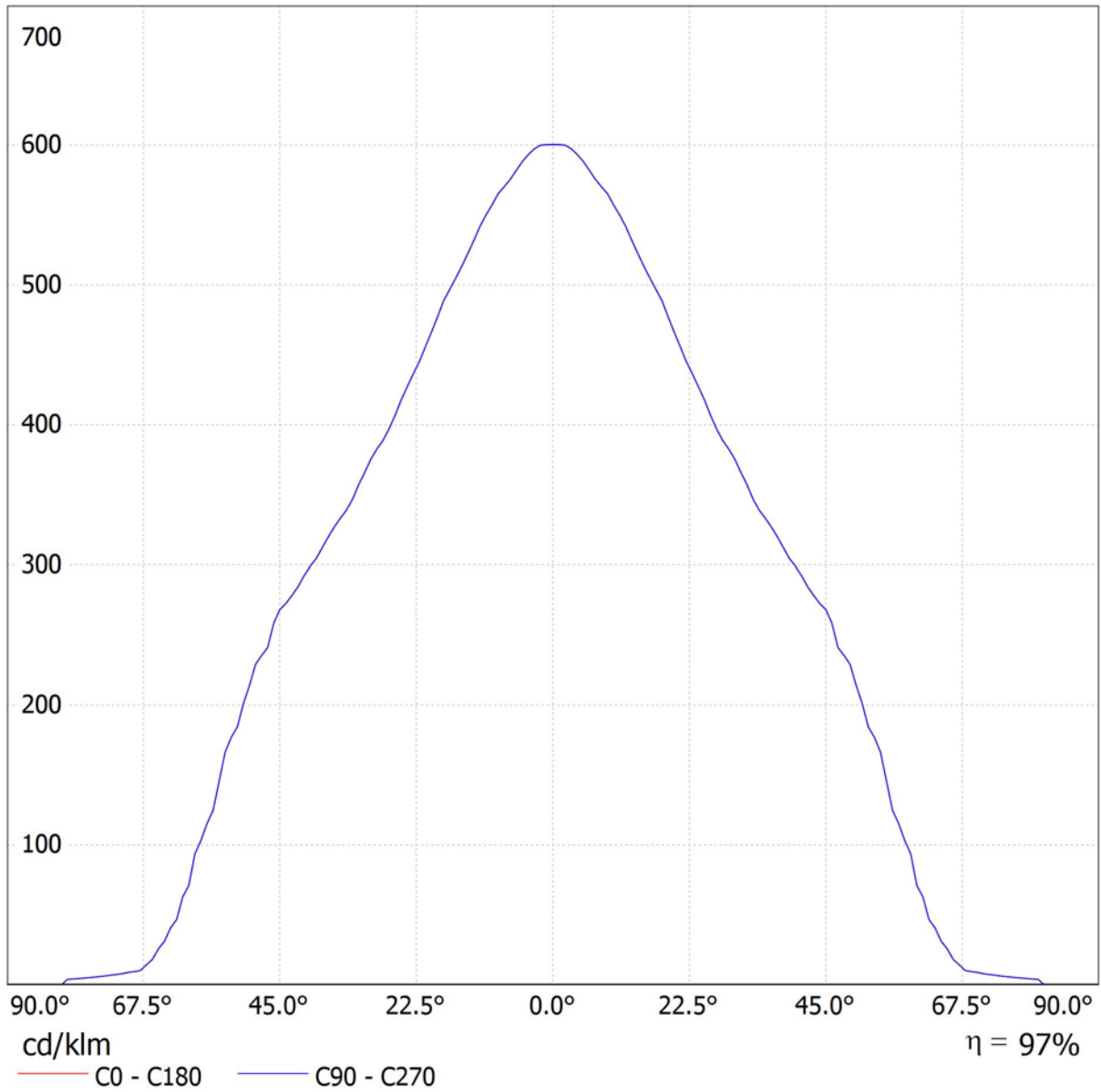
Luminaire: NS Cree NS-600A-6K-L60  
Lamps: 1 x LED



Operator  
Telephone  
Fax  
e-Mail

**NS Cree NS-600A-6K-L60 / LDC (Linear)**

Luminaire: NS Cree NS-600A-6K-L60  
Lamps: 1 x LED



Operator  
Telephone  
Fax  
e-Mail

## NS Cree NS-600A-6K-L60 / UGR-Table

Luminaire: NS Cree NS-600A-6K-L60  
Lamps: 1 x LED

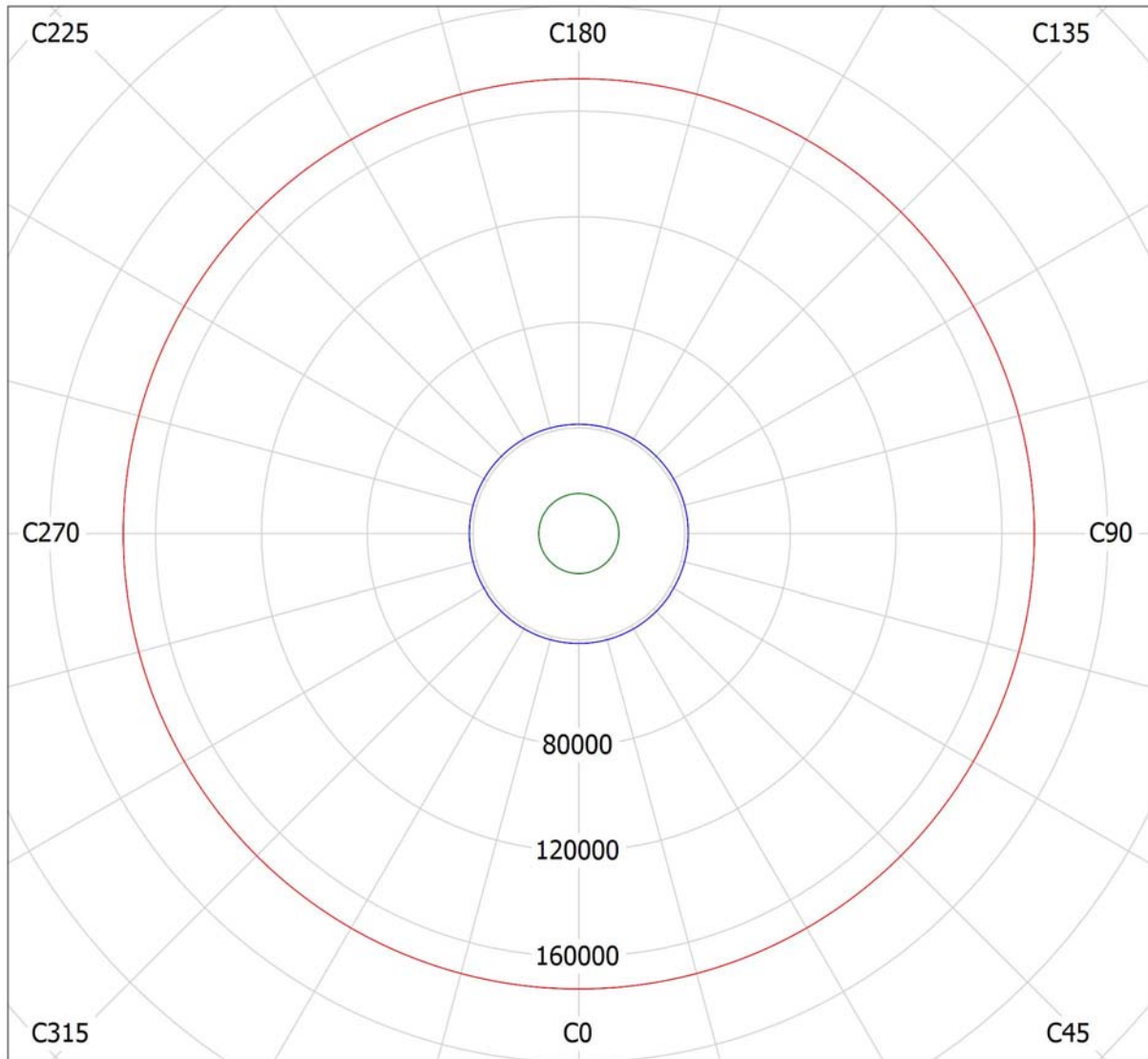
<b>Glare Evaluation According to UGR</b>											
$\rho$ Ceiling	70	70	50	50	30	70	70	50	50	30	
$\rho$ Walls	50	30	50	30	30	50	30	50	30	30	
$\rho$ Floor	20	20	20	20	20	20	20	20	20	20	
Room Size X Y		Viewing direction at right angles to lamp axis					Viewing direction parallel to lamp axis				
2H	2H	29.8	30.9	30.1	31.1	31.3	29.8	30.9	30.1	31.1	31.3
	3H	29.7	30.6	30.0	30.9	31.1	29.7	30.6	30.0	30.9	31.1
	4H	29.6	30.5	30.0	30.8	31.1	29.6	30.5	30.0	30.8	31.1
	6H	29.6	30.4	29.9	30.7	31.0	29.6	30.4	29.9	30.7	31.0
	8H	29.6	30.3	29.9	30.6	30.9	29.6	30.3	29.9	30.6	30.9
4H	12H	29.5	30.2	29.9	30.6	30.9	29.5	30.2	29.9	30.6	30.9
	2H	29.8	30.7	30.1	31.0	31.2	29.8	30.7	30.1	31.0	31.2
	3H	29.7	30.5	30.1	30.8	31.1	29.7	30.5	30.1	30.8	31.1
	4H	29.7	30.3	30.1	30.7	31.0	29.7	30.3	30.1	30.7	31.0
	6H	29.7	30.2	30.1	30.6	31.0	29.7	30.2	30.1	30.6	31.0
8H	8H	29.6	30.1	30.0	30.5	30.9	29.6	30.1	30.0	30.5	30.9
	12H	29.6	30.0	30.0	30.4	30.9	29.6	30.0	30.0	30.4	30.9
	4H	29.6	30.1	30.0	30.5	30.9	29.6	30.1	30.0	30.5	30.9
	6H	29.6	30.0	30.0	30.4	30.8	29.6	30.0	30.0	30.4	30.8
	8H	29.5	29.9	30.0	30.3	30.8	29.5	29.9	30.0	30.3	30.8
12H	12H	29.5	29.8	30.0	30.2	30.7	29.5	29.8	30.0	30.2	30.7
	4H	29.6	30.0	30.0	30.4	30.8	29.6	30.0	30.0	30.4	30.8
	6H	29.5	29.9	30.0	30.3	30.8	29.5	29.9	30.0	30.3	30.8
	8H	29.5	29.8	30.0	30.2	30.7	29.5	29.8	30.0	30.2	30.7
Variation of the observer position for the luminaire distances S											
S = 1.0H	+0.6 / -0.8					+0.6 / -0.8					
S = 1.5H	+1.9 / -5.7					+1.9 / -5.7					
S = 2.0H	+3.6 / -11.0					+3.6 / -11.0					
Standard table	BK00					BK00					
Correction Summand	11.3					11.3					
Corrected Glare Indices referring to 48000lm Total Luminous Flux											

The UGR values have been calculated according to CIE Publ. 117 Spacing-to-Height-Ratio = 0.25.

Operator  
Telephone  
Fax  
e-Mail

### NS Cree NS-600A-6K-L60 / Luminance Diagram

Luminaire: NS Cree NS-600A-6K-L60  
Lamps: 1 x LED

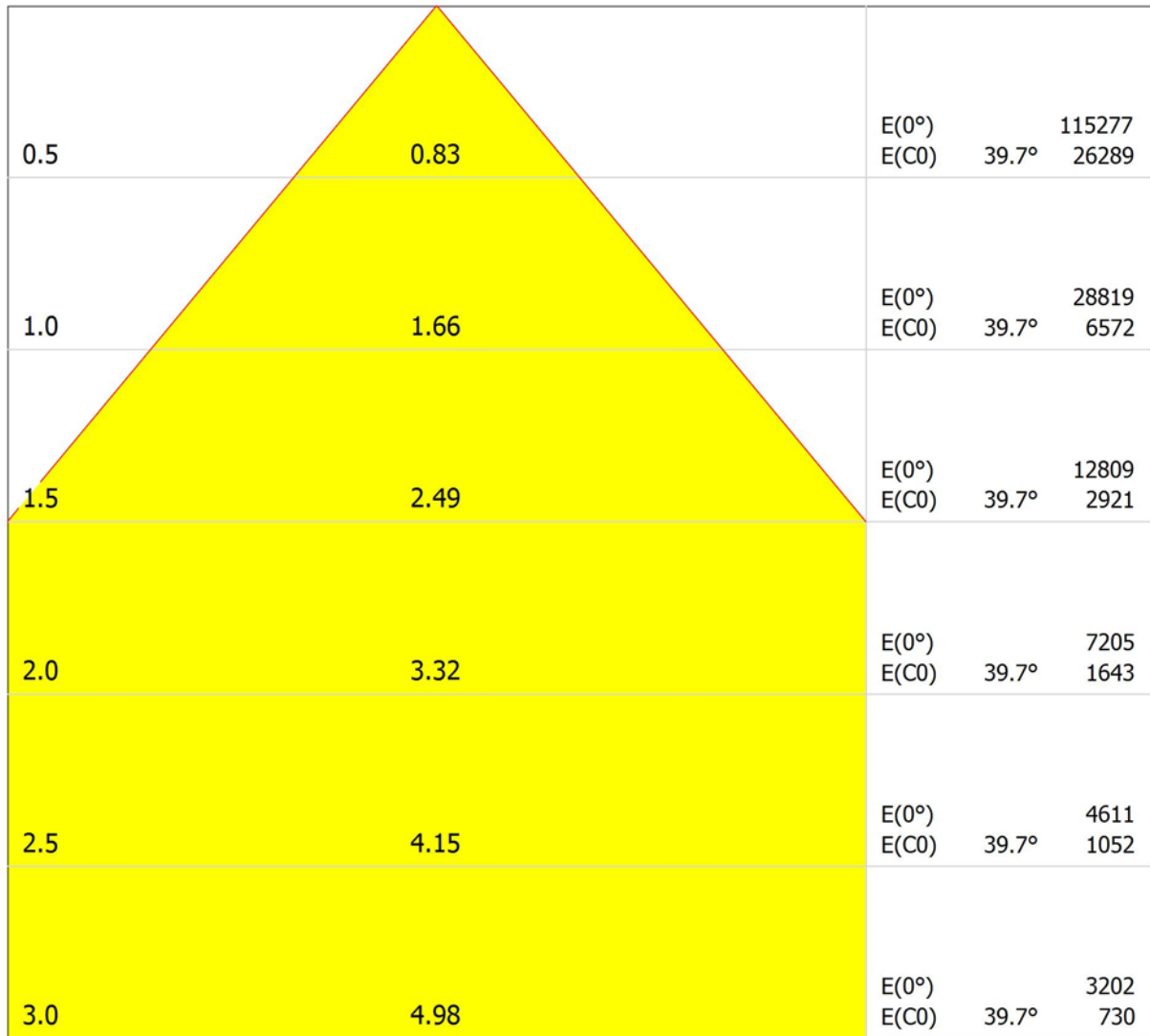


cd/m<sup>2</sup>  
— g = 55.0°    — g = 65.0°    — g = 75.0°

Operator  
 Telephone  
 Fax  
 e-Mail

**NS Cree NS-600A-6K-L60 / Cone Diagram**

Luminaire: NS Cree NS-600A-6K-L60  
 Lamps: 1 x LED



Distance [m]                      Cone Diameter [m]

Illuminance [lx]

— C0 - C180 (Half-value Angle: 79.4°)

Operator  
Telephone  
Fax  
e-Mail

## NS Cree NS-600A-6K-L60 / Luminous intensity table

Luminaire: NS Cree NS-600A-6K-L60  
Lamps: 1 x LED

<b>Gamma</b>	<b>C 0°</b>
0.0°	600
5.0°	588
10.0°	557
15.0°	513
20.0°	466
25.0°	418
30.0°	375
35.0°	333
40.0°	299
45.0°	268
50.0°	214
55.0°	146
60.0°	71
65.0°	26
70.0°	8.92
75.0°	5.77
80.0°	3.93
85.0°	0.00
90.0°	0.00

Values in cd/klm

Operator  
Telephone  
Fax  
e-Mail

---

**NS Cree NS-600A-6K-L60 / Luminance Table**

---

Luminaire: NS Cree NS-600A-6K-L60  
Lamps: 1 x LED

<b>Gamma</b>	<b>C 0°</b>
0.0°	407708
5.0°	401086
10.0°	384348
15.0°	360928
20.0°	336968
25.0°	312966
30.0°	294356
35.0°	276299
40.0°	265049
45.0°	257659
50.0°	226076
55.0°	172258
60.0°	96400
65.0°	41391
70.0°	17708
75.0°	15144
80.0°	15353
85.0°	0.00

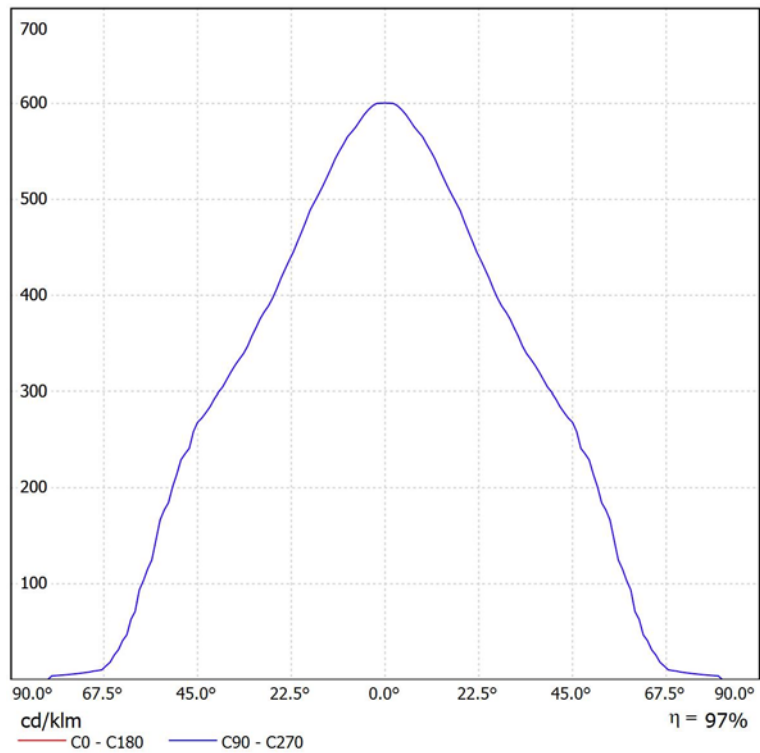
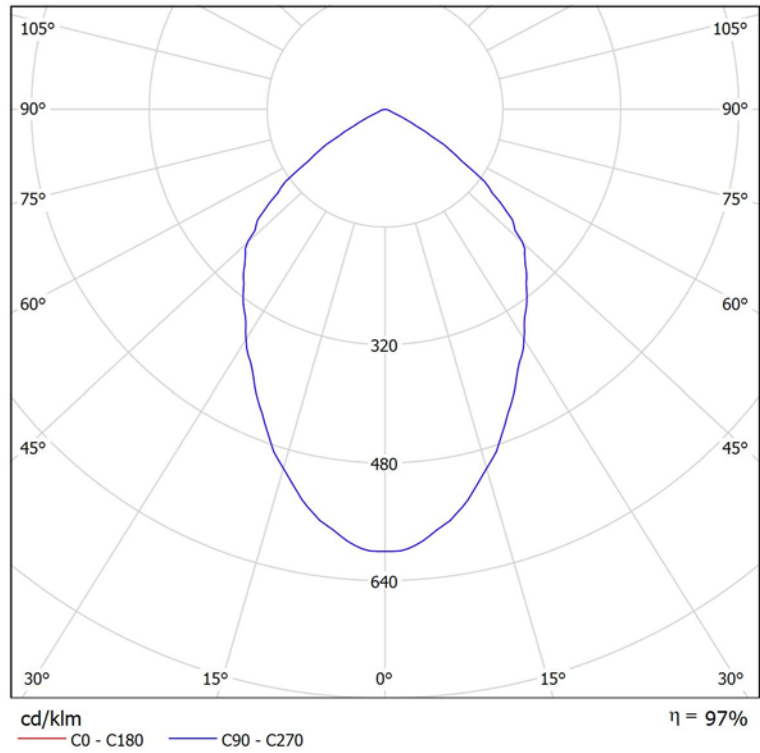
Values in Candela/m<sup>2</sup>.

Operator  
Telephone  
Fax  
e-Mail

**NS Cree NS-600A-6K-L60 / LDC Data Sheet**

Luminaire: NS Cree NS-600A-6K-L60

Lamps: 1 x LED



Operator  
Telephone  
Fax  
e-Mail

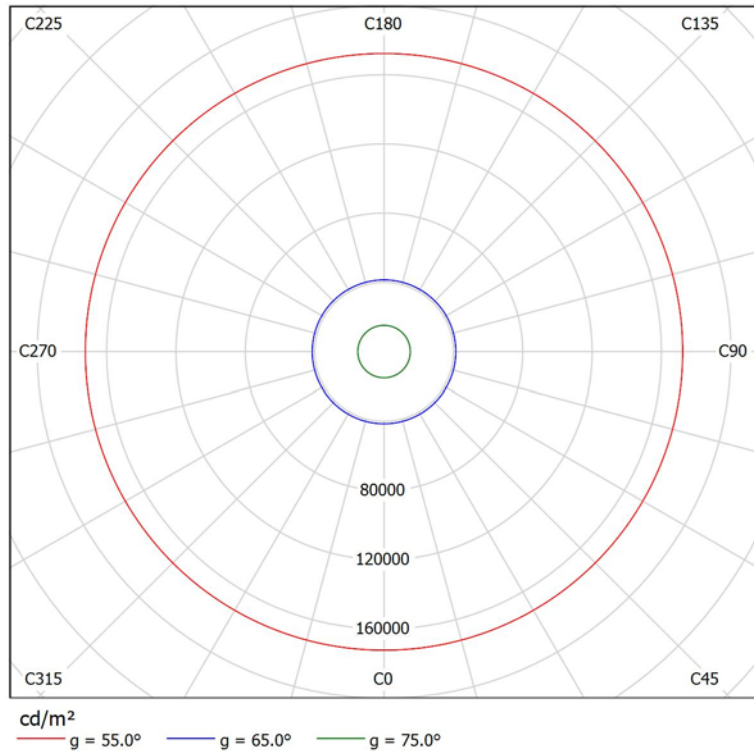
**NS Cree NS-600A-6K-L60 / Glare Data Sheet**

Luminaire: NS Cree NS-600A-6K-L60

Lamps: 1 x LED

Glare Evaluation According to UGR											
p Ceiling		70	70	50	50	30	70	70	50	50	30
p Walls		50	30	50	30	30	50	30	50	30	30
p Floor		20	20	20	20	20	20	20	20	20	20
Room Size X Y		Viewing direction at right angles to lamp axis					Viewing direction parallel to lamp axis				
2H	2H	29.8	30.9	30.1	31.1	31.3	29.8	30.9	30.1	31.1	31.3
	3H	29.7	30.6	30.0	30.9	31.1	29.7	30.6	30.0	30.9	31.1
	4H	29.6	30.5	30.0	30.8	31.1	29.6	30.5	30.0	30.8	31.1
	6H	29.6	30.4	29.9	30.7	31.0	29.6	30.4	29.9	30.7	31.0
	8H	29.6	30.3	29.9	30.6	30.9	29.6	30.3	29.9	30.6	30.9
	12H	29.5	30.2	29.9	30.6	30.9	29.5	30.2	29.9	30.6	30.9
4H	2H	29.8	30.7	30.1	31.0	31.2	29.8	30.7	30.1	31.0	31.2
	3H	29.7	30.5	30.1	30.8	31.1	29.7	30.5	30.1	30.8	31.1
	4H	29.7	30.3	30.1	30.7	31.0	29.7	30.3	30.1	30.7	31.0
	6H	29.7	30.2	30.1	30.6	31.0	29.7	30.2	30.1	30.6	31.0
	8H	29.6	30.1	30.0	30.5	30.9	29.6	30.1	30.0	30.5	30.9
	12H	29.6	30.0	30.0	30.4	30.9	29.6	30.0	30.0	30.4	30.9
8H	4H	29.6	30.1	30.0	30.5	30.9	29.6	30.1	30.0	30.5	30.9
	6H	29.6	30.0	30.0	30.4	30.8	29.6	30.0	30.0	30.4	30.8
	8H	29.5	29.9	30.0	30.3	30.8	29.5	29.9	30.0	30.3	30.8
	12H	29.5	29.8	30.0	30.2	30.7	29.5	29.8	30.0	30.2	30.7
12H	4H	29.6	30.0	30.0	30.4	30.8	29.6	30.0	30.0	30.4	30.8
	6H	29.5	29.9	30.0	30.3	30.8	29.5	29.9	30.0	30.3	30.8
	8H	29.5	29.8	30.0	30.2	30.7	29.5	29.8	30.0	30.2	30.7
Variation of the observer position for the luminaire distances S											
S = 1.0H		+0.6 / -0.8					+0.6 / -0.8				
S = 1.5H		+1.9 / -5.7					+1.9 / -5.7				
S = 2.0H		+3.6 / -11.0					+3.6 / -11.0				
Standard table		BK00					BK00				
Correction Summand		11.3					11.3				
Corrected Glare Indices referring to 48000lm Total Luminous Flux											

The UGR values have been calculated according to CIE Publ. 117 Spacing-to-Height-Ratio = 0.25.



Operator  
Telephone  
Fax  
e-Mail

**NS Cree NS-600A-6K-L60 / Data sheet emergency lighting**

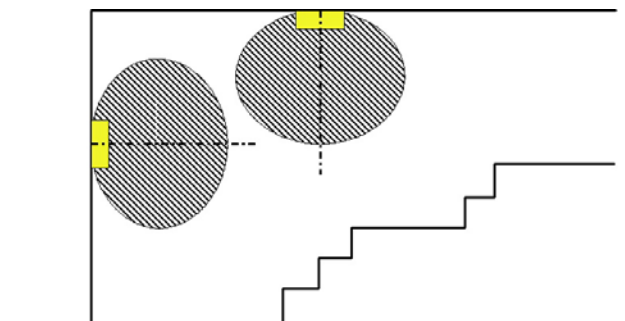
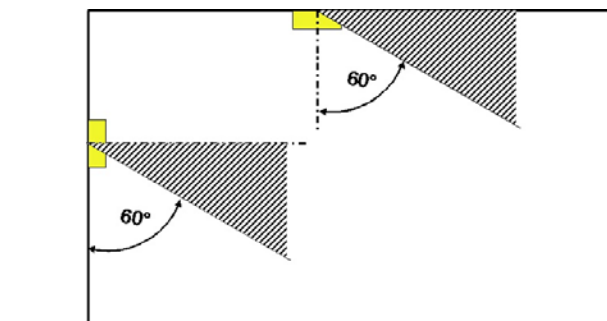
Luminaire: NS Cree NS-600A-6K-L60

Lamps: 1 x LED

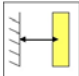
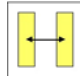
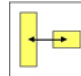
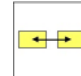
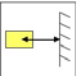
Colour rendering index: 75  
Luminous flux: 48000 lm  
Correction Factor: 1.000  
Emergency lighting factor: 1.00  
Emergency lighting luminous flux: 48000 lm  
Light output ratio: 96.72  
Light output ratio (lower hemisphere): 100.00  
Light output ratio (upper hemisphere): 0.00

Glare valuation (Maximum luminous intensity [cd])

	C0	C90	C0 - C360
Gamma 60° - 90°	3407.0	3407.0	3407.0
Gamma 0° - 180°	28819.2	28819.2	28819.2



Distance table for even escape routes

Mounting Height [m]					
2.00	3.33	7.15	7.15	7.15	3.33
2.50	4.16	8.94	8.94	8.94	4.16
3.00	4.99	10.73	10.73	10.73	4.99
3.50	5.82	12.52	12.52	12.52	5.82
4.00	6.66	14.31	14.31	14.31	6.66

The spacing table is based on the following parameters:

- Maintenance factor: 0.72
- Emergency lighting factor: 1.00
- Minimum illuminance on centre line: 1.00 lx
- Minimum illuminance on half of escape route width: 0.50 lx
- Diversity on the centre line max. 40 : 1
- Width of escape route: 2.00 m

Operator  
 Telephone  
 Fax  
 e-Mail

**Exterior Scene 1 / Planning data**



Maintenance factor: 0.80, ULR (Upward Light Ratio): 38.0%

Scale 1:745

**Luminaire Parts List**

No.	Pieces	Designation (Correction Factor)	Φ (Luminaire) [lm]	Φ (Lamps) [lm]	P [W]
1	8	NS Cree NS-600A-6K-L60 (Type 1)* (1.000)	60934	63000	603.0
*Modified Technical Specifications			Total: 487472	Total: 504000	4824.0

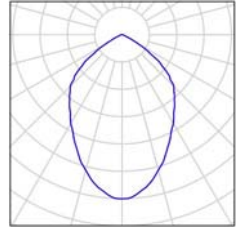
Operator  
Telephone  
Fax  
e-Mail

---

## Exterior Scene 1 / Luminaire parts list

8 Pieces NS Cree NS-600A-6K-L60 (Type 1)  
Article No.: Cree  
Luminous flux (Luminaire): 60934 lm  
Luminous flux (Lamps): 63000 lm  
Luminaire Wattage: 603.0 W  
Luminaire classification according to CIE: 100  
CIE flux code: 65 96 100 100 97  
Fitting: 1 x User defined (Correction Factor 1.000).

See our luminaire  
catalog for an image of  
the luminaire.



Operator  
Telephone  
Fax  
e-Mail

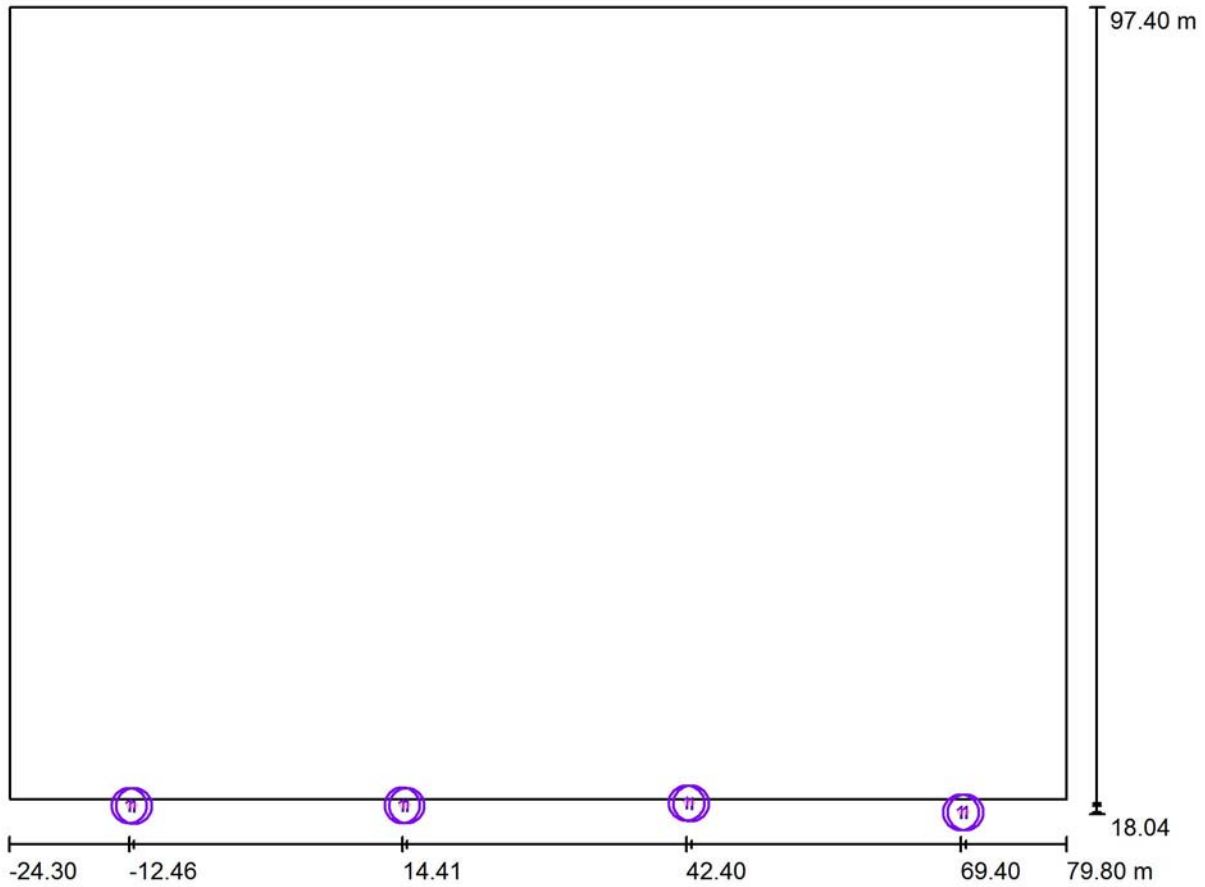
**Exterior Scene 1 / Floor plan**



Scale 1 : 745

Operator  
 Telephone  
 Fax  
 e-Mail

**Exterior Scene 1 / Luminaires (layout plan)**



Scale 1 : 745

**Luminaire Parts List**

No.	Pieces	Designation
1	8	NS Cree NS-600A-6K-L60 (Type 1)*

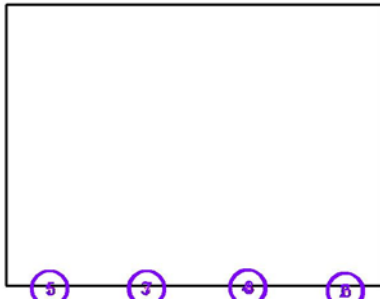
\*Modified Technical Specifications

Operator  
Telephone  
Fax  
e-Mail

## Exterior Scene 1 / Luminaires (coordinates list)

### NS Cree NS-600A-6K-L60 (Type 1)

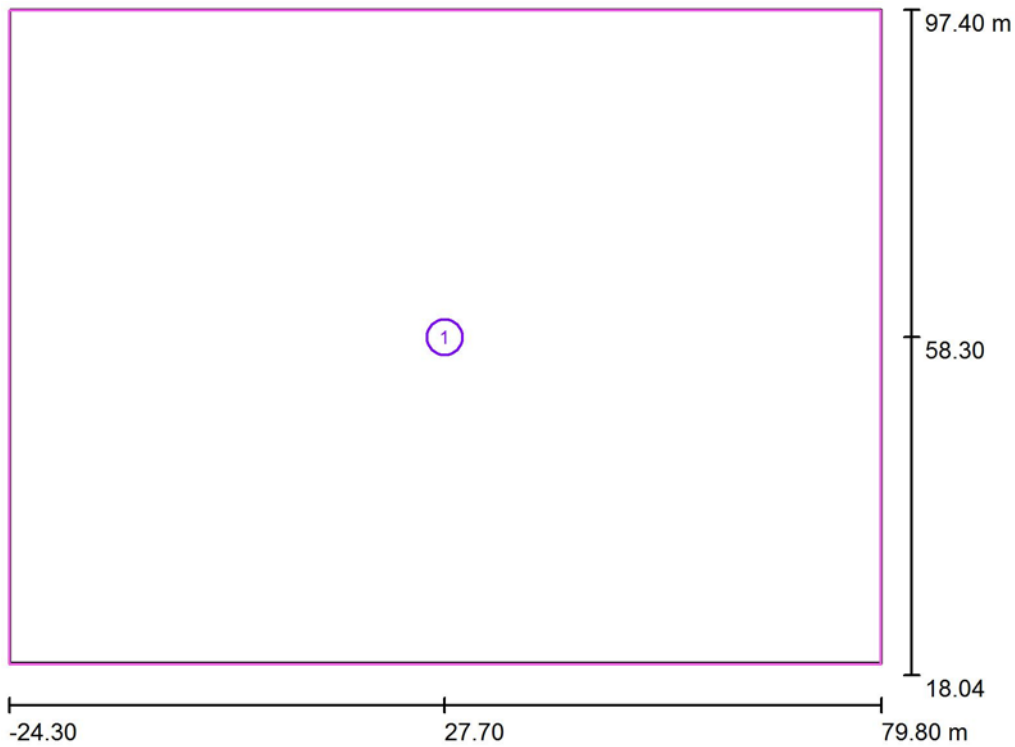
60934 lm, 603.0 W, 1 x 1 x User defined (Correction Factor 1.000).



No.	Position [m]			Rotation [°]		
	X	Y	Z	X	Y	Z
1	-12.460	18.850	8.000	80.3	0.0	25.0
2	69.400	18.200	8.000	80.3	0.0	25.0
3	14.408	18.865	8.000	80.3	0.0	25.0
4	42.400	19.100	8.000	80.3	0.0	25.0
5	-11.995	18.824	8.000	80.3	0.0	-25.0
6	69.865	18.174	8.000	80.3	0.0	-25.0
7	14.873	18.839	8.000	80.3	0.0	-25.0
8	42.865	19.074	8.000	80.3	0.0	-25.0

Operator  
 Telephone  
 Fax  
 e-Mail

**Exterior Scene 1 / Calculation surfaces (results overview)**



Scale 1 : 903

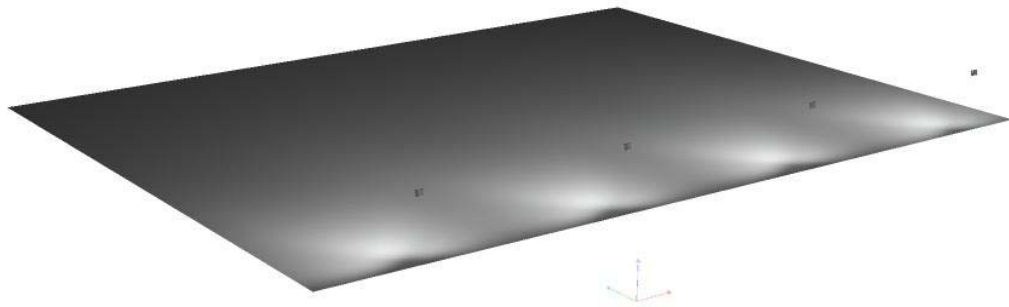
**Calculation Surface List**

No.	Designation	Type	Grid	$E_{av}$ [lx]	$E_{min}$ [lx]	$E_{max}$ [lx]	u0	$E_{min} / E_{max}$
1	Calculation Surface 1	perpendicular	128 x 128	24	1.41	238	0.059	0.006

Operator  
Telephone  
Fax  
e-Mail

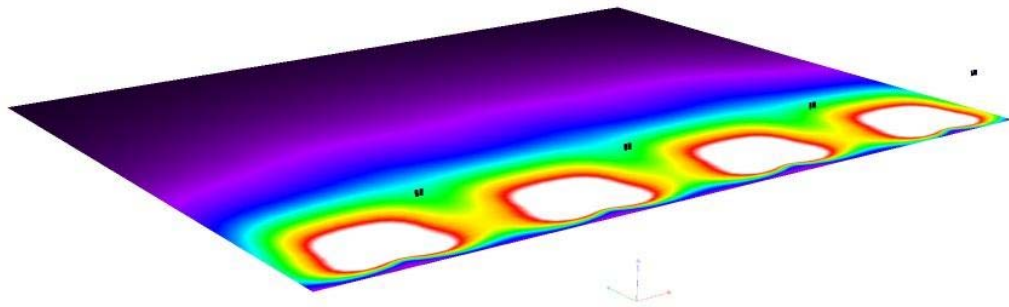
**Exterior Scene 1 / 3D Rendering**

---



Operator  
Telephone  
Fax  
e-Mail

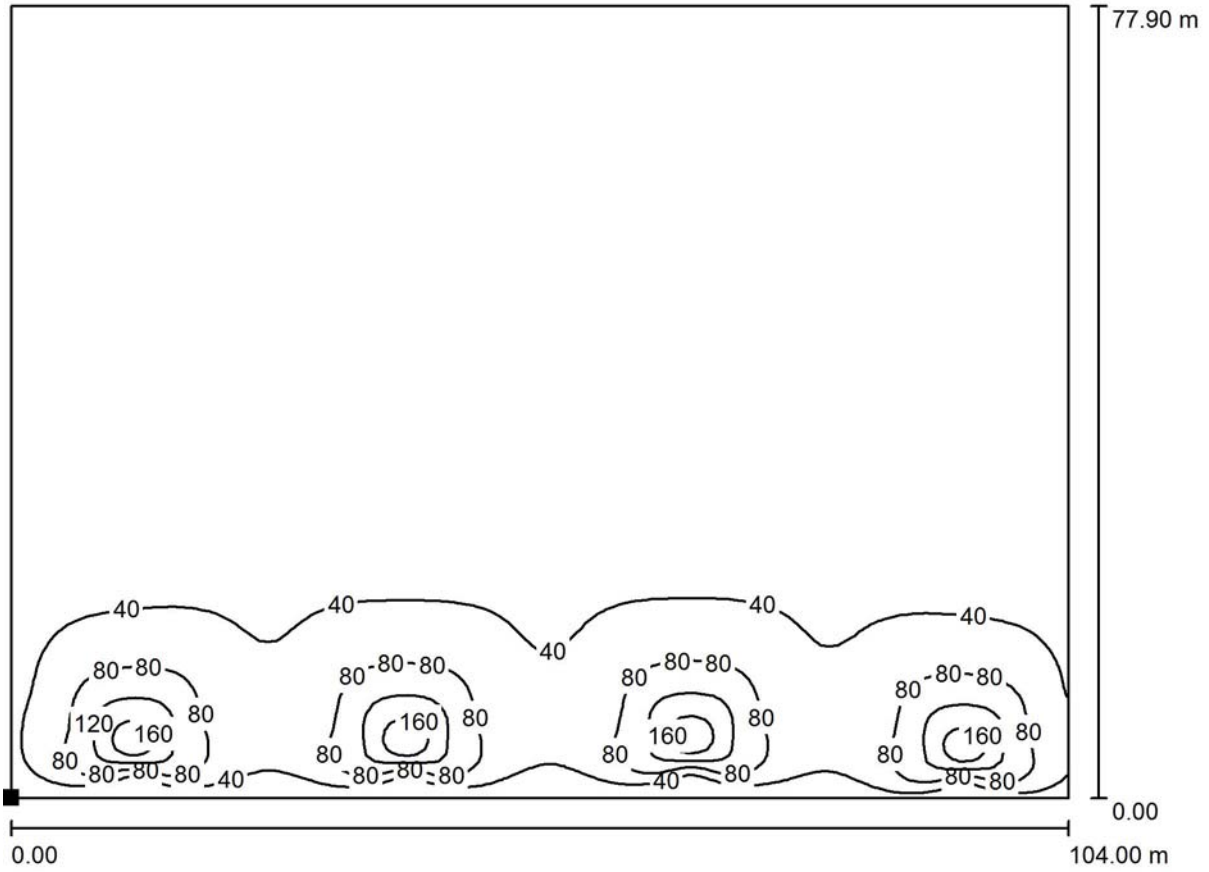
Exterior Scene 1 / False Colour Rendering



lx

Operator  
 Telephone  
 Fax  
 e-Mail

Exterior Scene 1 / Ground Element 1 / Surface 1 / Isolines (E)



Values in Lux, Scale 1 : 744

Position of surface in external scene:  
 Marked point:  
 (-24.200 m, 19.500 m, 0.000 m)

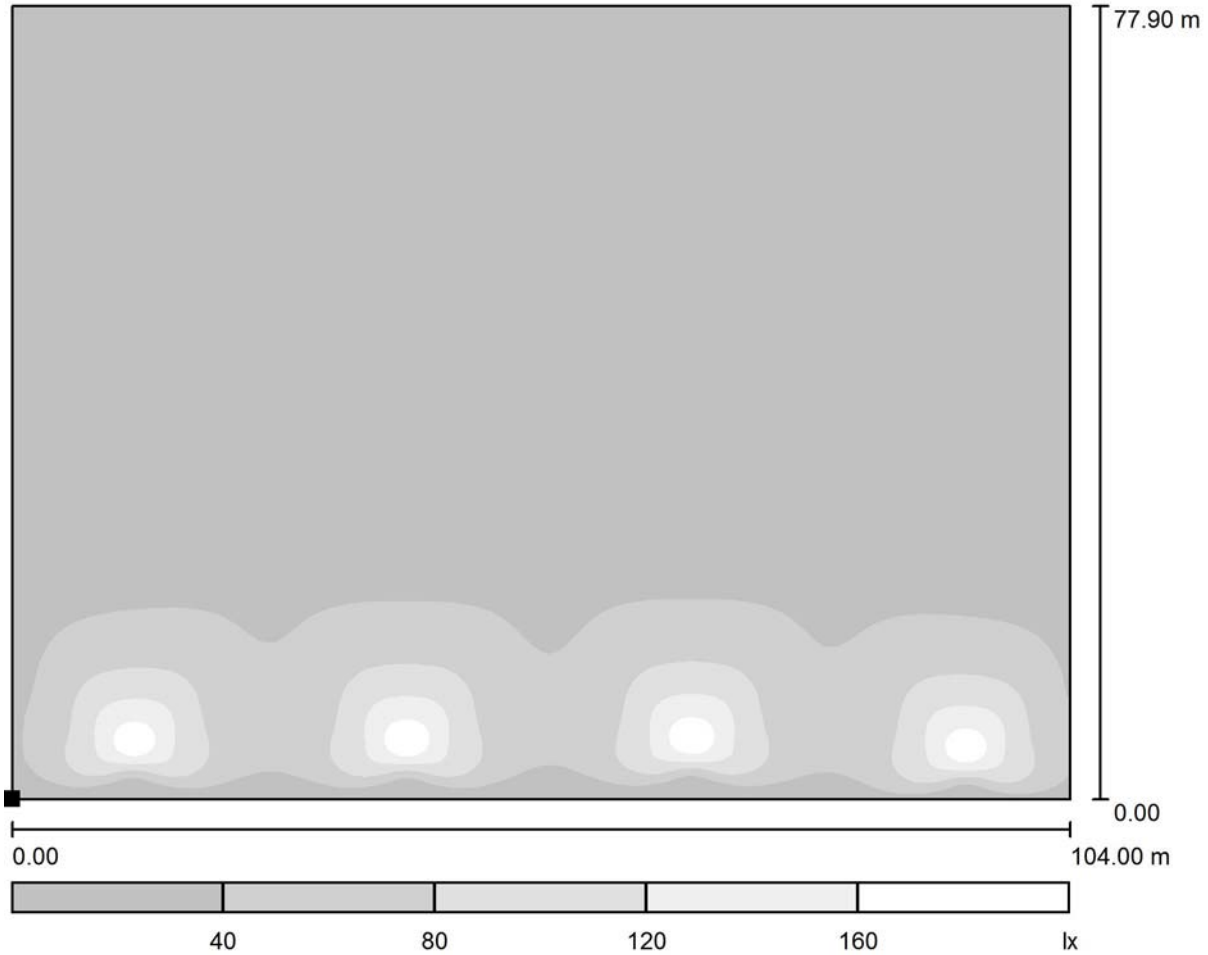


Grid: 128 x 128 Points

$E_{av}$ [lx]	$E_{min}$ [lx]	$E_{max}$ [lx]	u0	$E_{min} / E_{max}$
23	1.52	192	0.065	0.008

Operator  
Telephone  
Fax  
e-Mail

Exterior Scene 1 / Ground Element 1 / Surface 1 / Greyscale (E)



Scale 1 : 744

Position of surface in external scene:  
Marked point:  
(-24.200 m, 19.500 m, 0.000 m)

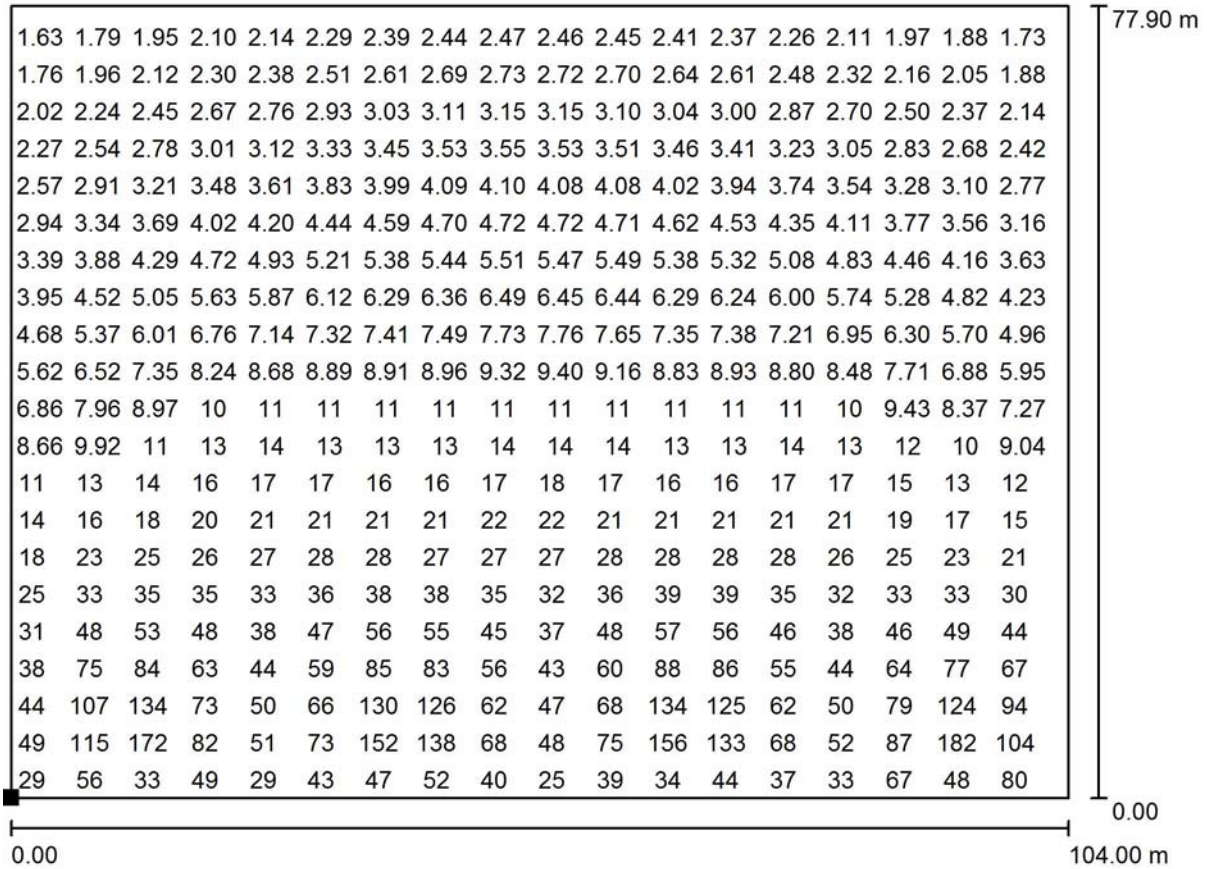


Grid: 128 x 128 Points

$E_{av}$ [lx]	$E_{min}$ [lx]	$E_{max}$ [lx]	u0	$E_{min} / E_{max}$
23	1.52	192	0.065	0.008

Operator  
Telephone  
Fax  
e-Mail

**Exterior Scene 1 / Ground Element 1 / Surface 1 / Value Chart (E)**



Values in Lux, Scale 1 : 744

Not all calculated values could be displayed.

Position of surface in external scene:  
Marked point:  
(-24.200 m, 19.500 m, 0.000 m)



Grid: 128 x 128 Points

$E_{av}$  [lx]  
23

$E_{min}$  [lx]  
1.52

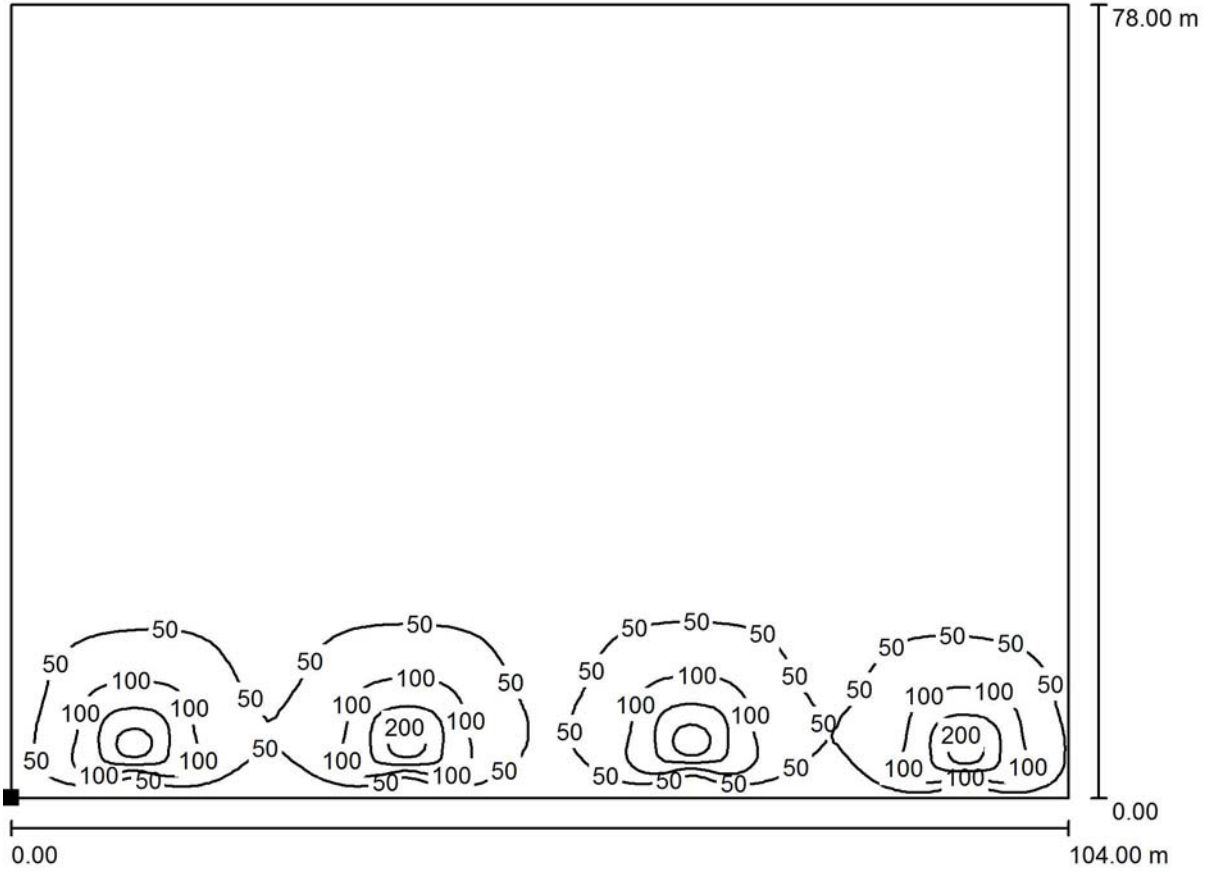
$E_{max}$  [lx]  
192

$u_0$   
0.065

$E_{min} / E_{max}$   
0.008

Operator  
 Telephone  
 Fax  
 e-Mail

**Exterior Scene 1 / Calculation Surface 1 / Isolines (E, Perpendicular)**



Values in Lux, Scale 1 : 744

Position of surface in external scene:  
 Marked point:  
 (-24.300 m, 19.300 m, 0.850 m)

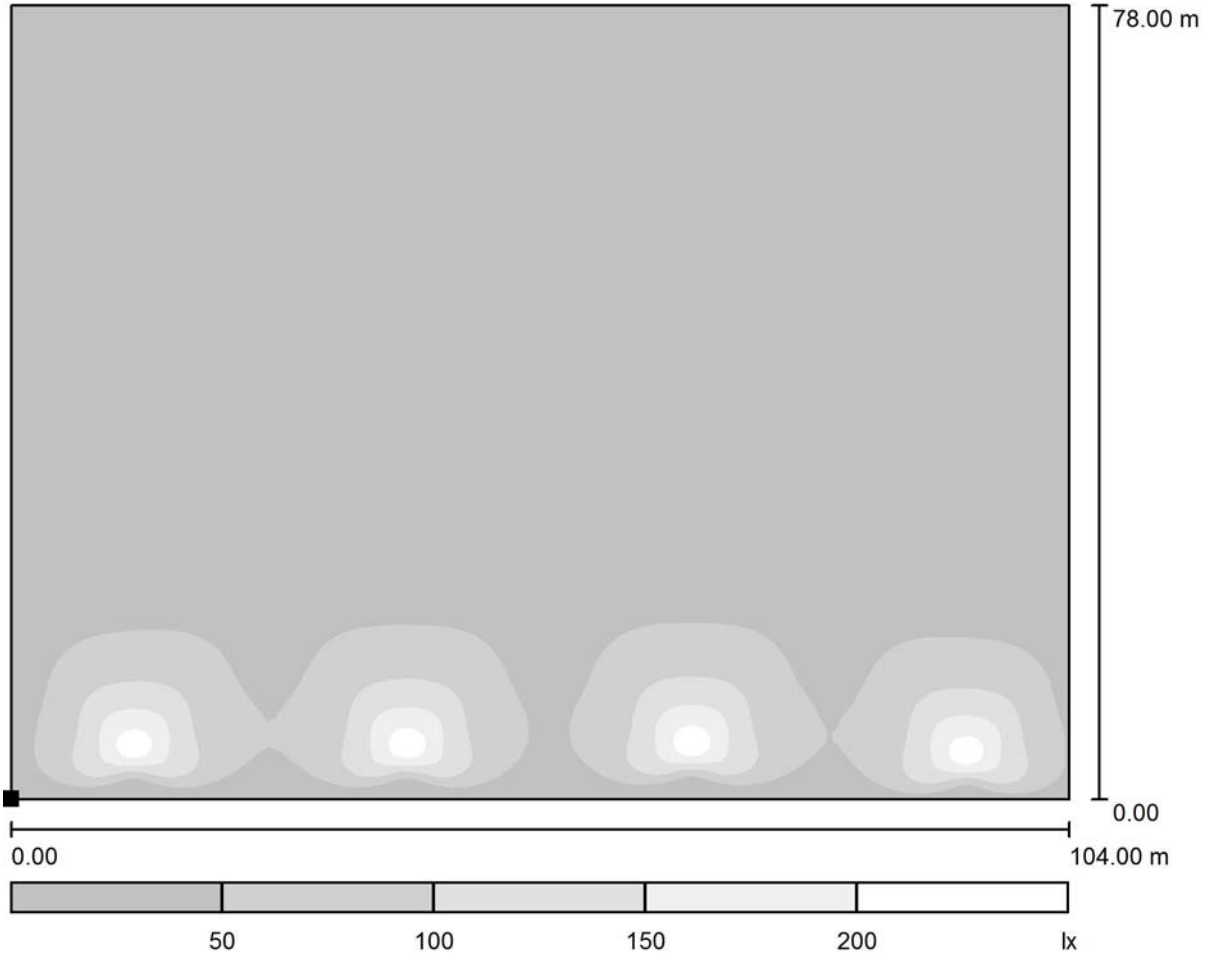


Grid: 128 x 128 Points

$E_{av}$ [lx]	$E_{min}$ [lx]	$E_{max}$ [lx]	$u_0$	$E_{min} / E_{max}$
24	1.41	238	0.059	0.006

Operator  
Telephone  
Fax  
e-Mail

Exterior Scene 1 / Calculation Surface 1 / Greyscale (E, Perpendicular)



Scale 1 : 744

Position of surface in external scene:  
Marked point:  
(-24.300 m, 19.300 m, 0.850 m)

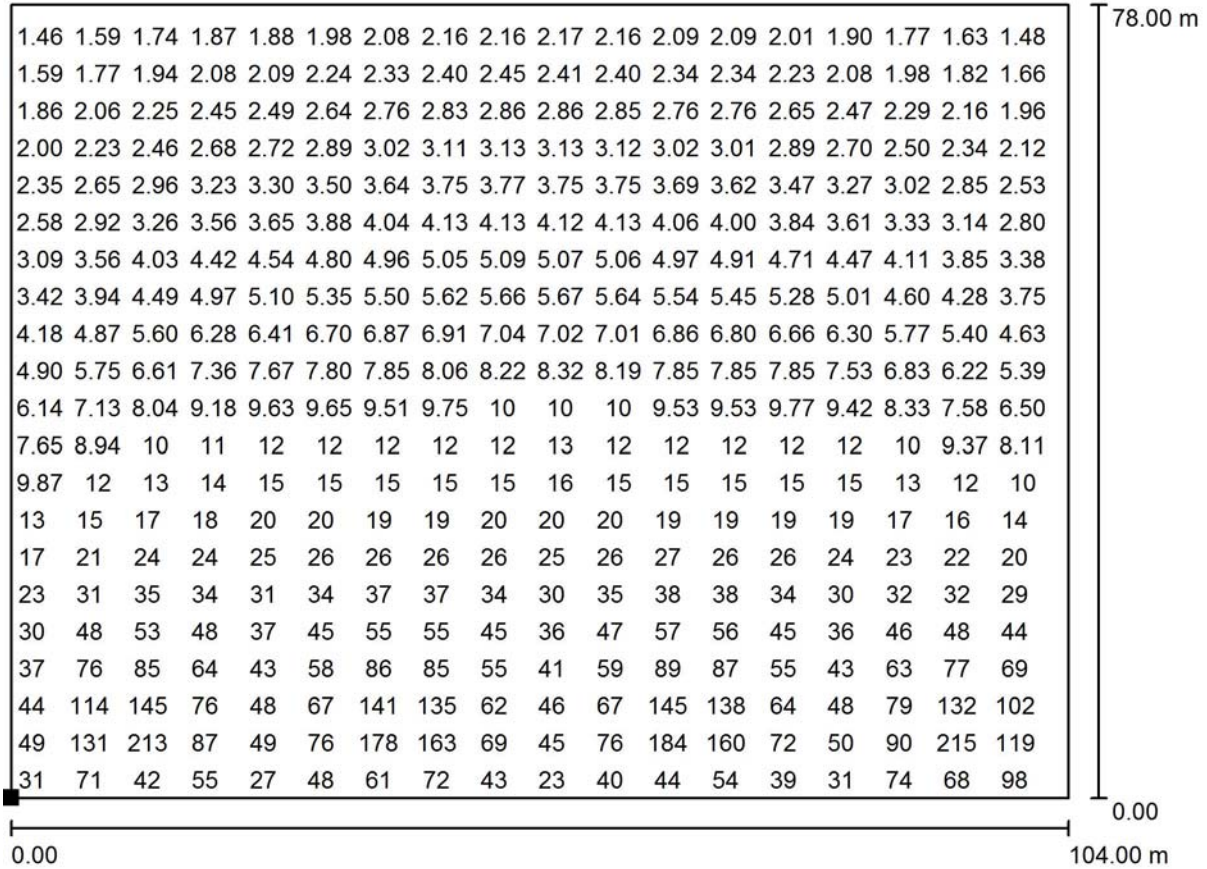


Grid: 128 x 128 Points

$E_{av}$ [lx]	$E_{min}$ [lx]	$E_{max}$ [lx]	u0	$E_{min} / E_{max}$
24	1.41	238	0.059	0.006

Operator  
Telephone  
Fax  
e-Mail

**Exterior Scene 1 / Calculation Surface 1 / Value Chart (E, Perpendicular)**



Values in Lux, Scale 1 : 744

Not all calculated values could be displayed.

Position of surface in external scene:  
Marked point:  
(-24.300 m, 19.300 m, 0.850 m)



Grid: 128 x 128 Points

$E_{av}$  [lx]  
24

$E_{min}$  [lx]  
1.41

$E_{max}$  [lx]  
238

$u_0$   
0.059

$E_{min} / E_{max}$   
0.006