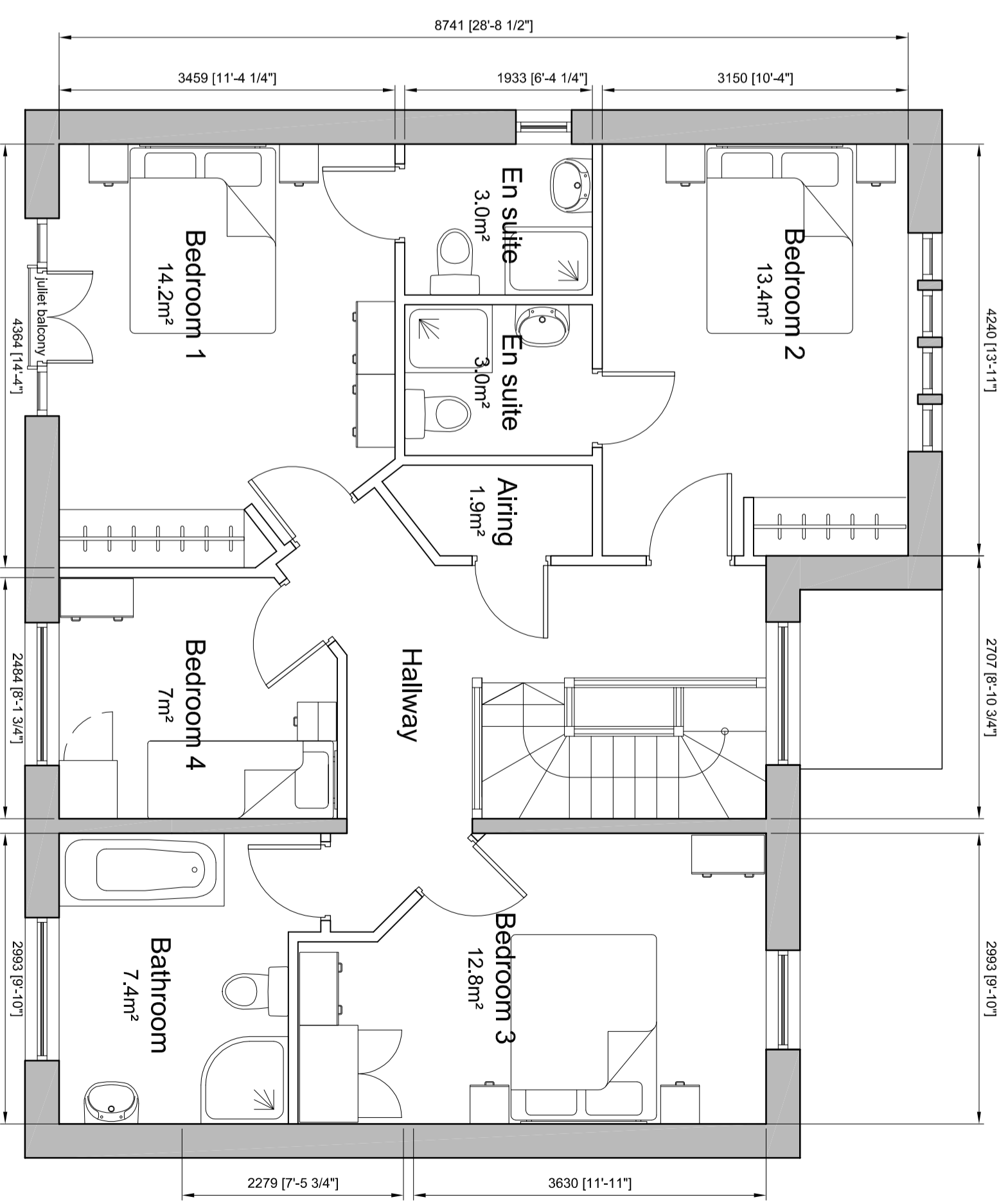


**Ground floor**  
**Type C3 'The Cashmere'**  
 3B Detached house  
 142m<sup>2</sup>/ 1506 sqft



**First floor**

REVISIONS

This design is copyright ©

**Mark Oliver Homes**  
 Residential Development  
 Cowlersley Lane  
 Cowlersley, Huddersfield.

**Floor Plans**  
 Type E 'The Cashmere'  
 4-Bed Detached House

Drawn: GJ  
 Date: 18.12.15  
 Scale: 1:50@A2  
 Checked: [blank]

**brewsterbye architects**  
 5 NORTH HILL ROAD  
 HEADINGLEY  
 LEADEN  
 LS15 2EN  
 0113 272400  
 0113 284450  
 info@brewsterbye.co.uk  
 www.brewsterbye.co.uk

Dwg No: 486/01(02)015 #