

0m Scale 1:50 4m
 0m Scale 1:100 8m
 0m Scale 1:200 16m
 0m Scale 1:1250 100m

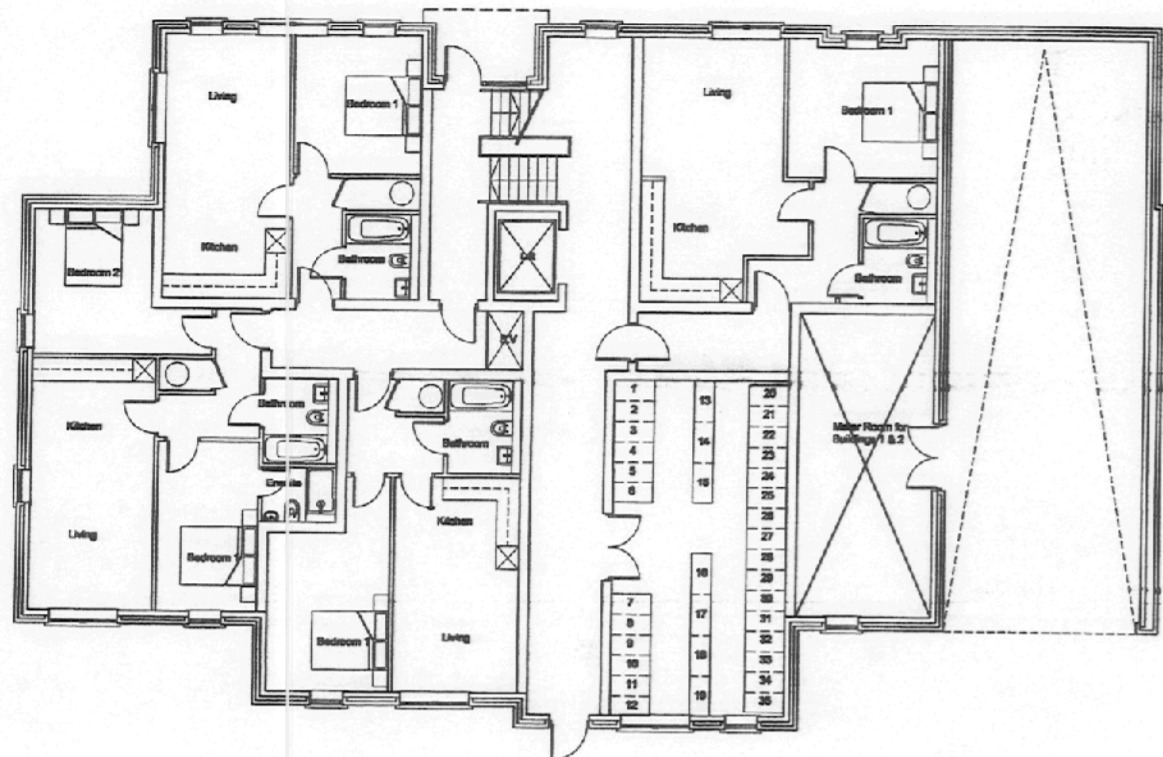
[When to scale of original plan, bar = 8cm]

© Copyright Kirklees Metropolitan Council

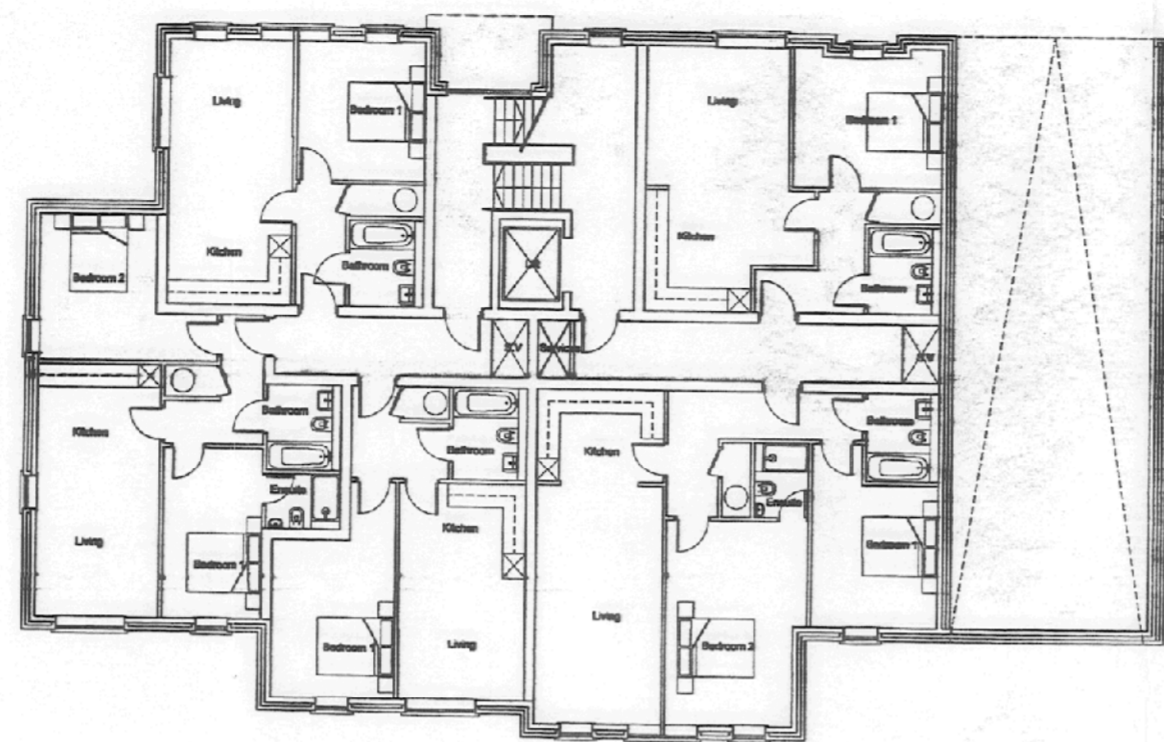
08/61/90245/E2

1. DO NOT SCALE FROM THIS DRAWING - USE FIGURED DIMENSIONS ONLY
2. TO BE READ IN CONJUNCTION WITH ALL OTHER CONSULTANTS / SPECIALISTS DRAWINGS. REPORT ANY DISCREPANCIES BEFORE AFFECTED WORK COMMENCES
3. ALL SETTING OUT DIMENSIONS TO BE CHECKED ON SITE BY CONTRACTOR BEFORE WORK COMMENCES

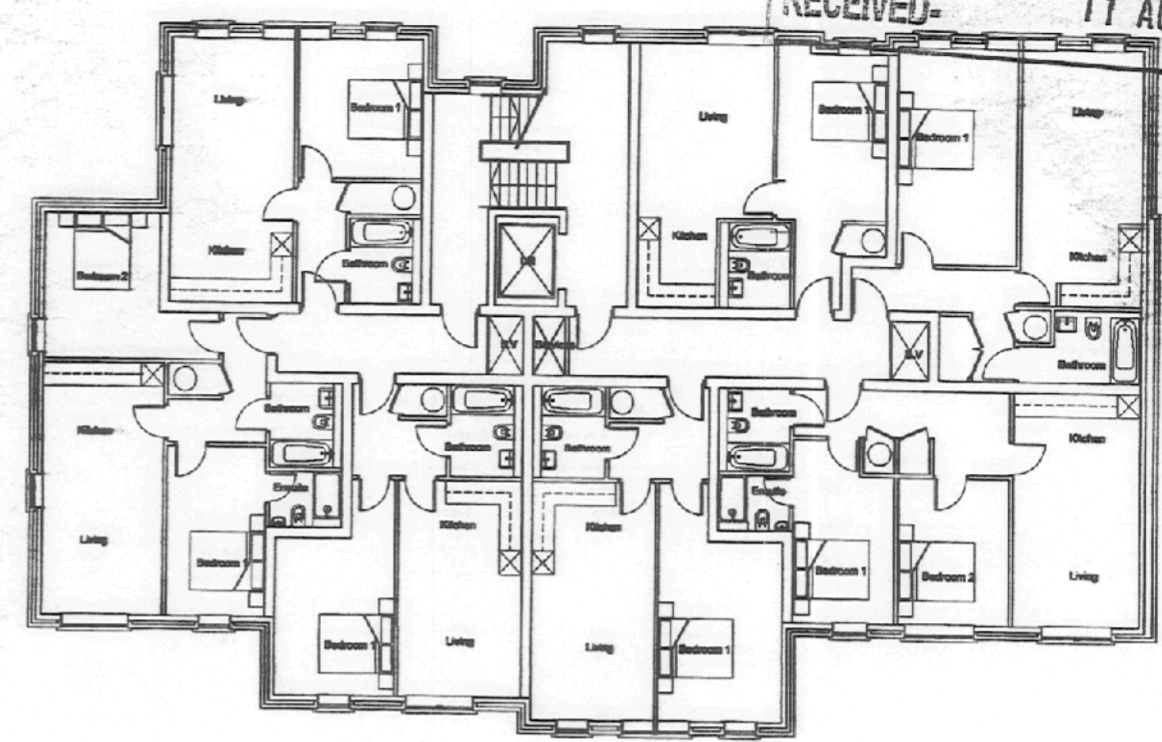
AMENDED PLAN
 RECEIVED - 11 AUG 2008



Ground Floor



First Floor



Second Floor

Schedule of Accommodation

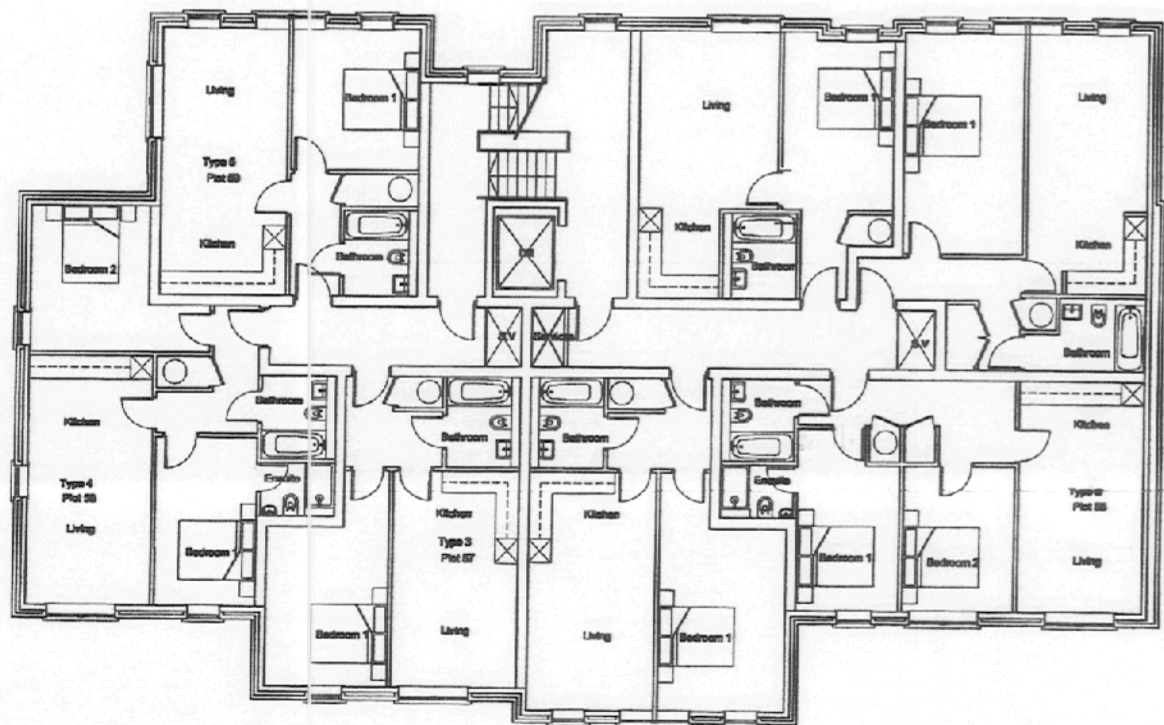
26 No 1 Bed Apartments
 11 No 2 Bed Apartments

37 Apartments in Total

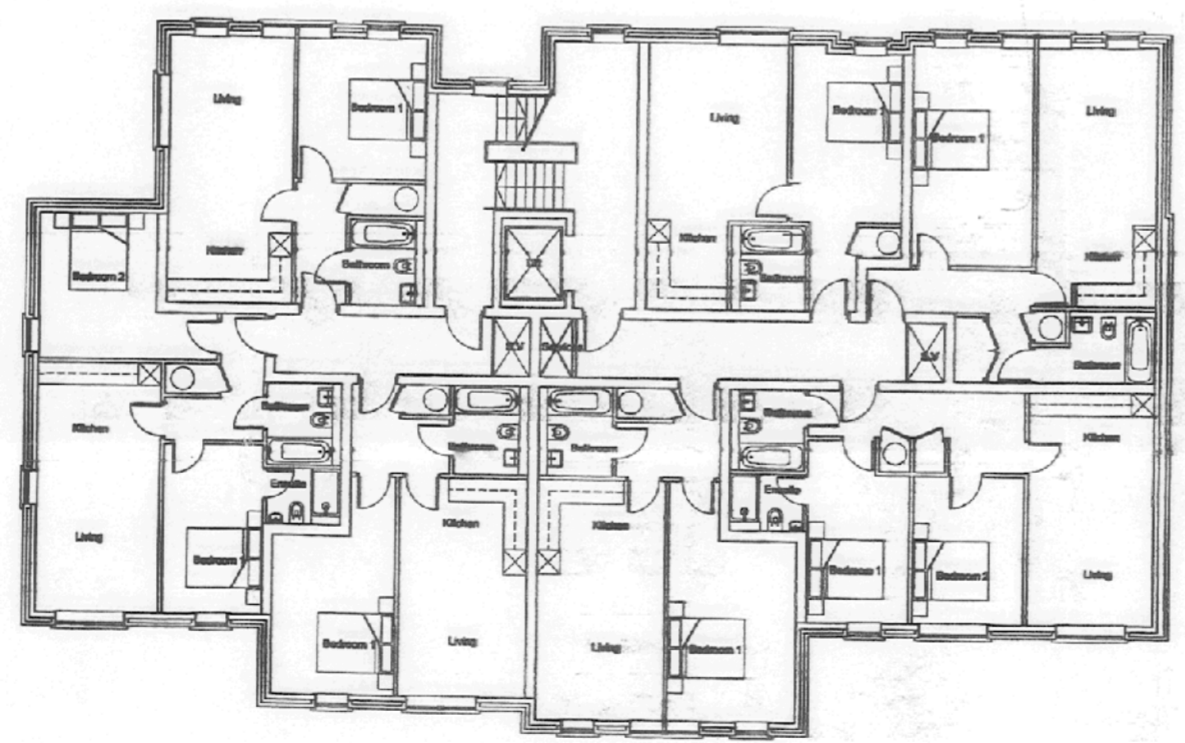
Overall reduction of 1 Apartment

Cycle Spaces

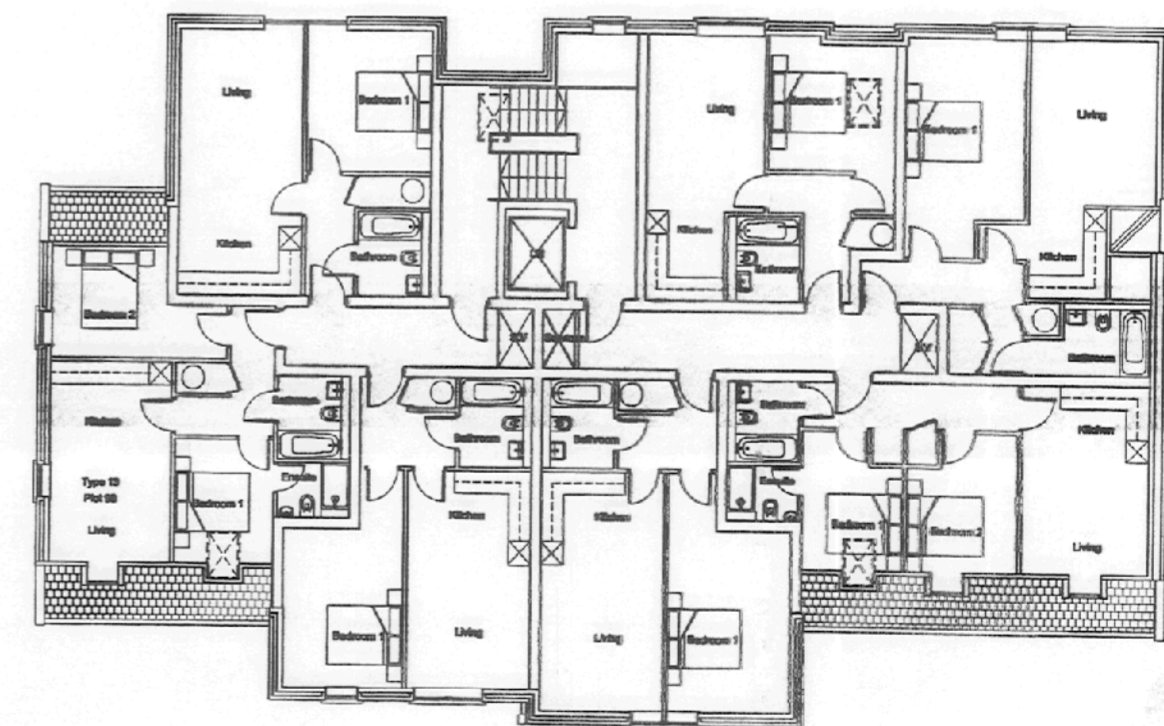
35 "vertical cycle lockers"



Third Floor



Fourth Floor



Fifth Floor

rev. description

client	Amco Developments (Dewsbury) Limited
project	Carlton Road, Dewsbury
drawing title	Building One - Plans
drawing number	060136_230
revision	-
drawing status	Planning
scale	1:200 @ A2
date	8th August 2008
drawn by	AK

seven
 Seven Architecture offices at:
 The White House, Wilderspool Park, WARRINGTON, Cheshire, WA9 6SL
 t: 01925 436106
 Suite 1, The Exchange, Station Parade, HARRROGATE, North Yorkshire, HG1 1TS
 t: 01423 700697
 e: info@sevenarchitecture.co.uk www.sevenarchitecture.co.uk