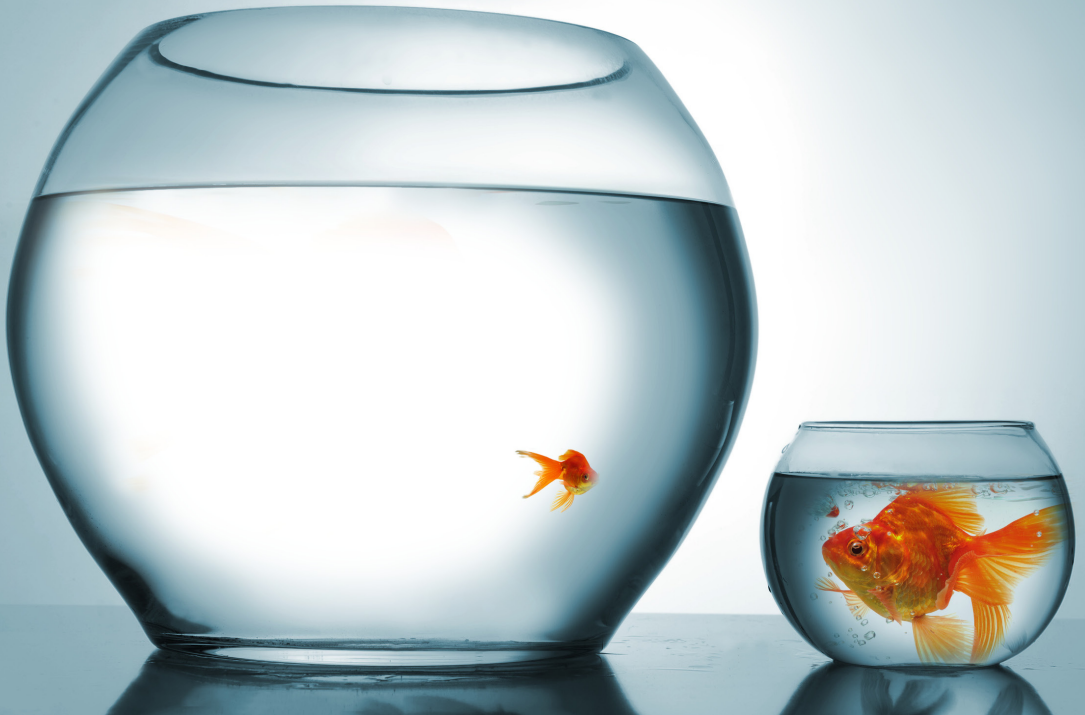


Is your home **too big?**



Are you a Kirklees Neighbourhood Housing, or a housing association tenant within Kirklees?
Are you living in a property that is too big for your needs?

If yes then we can help.

Kirklees Council's Homefit scheme may be able to assist you.

Why move?

- The property is too big for your needs
- Not all bedrooms/rooms are used
- Utility bills are too expensive e.g. it is cheaper to heat a one bedroom property than a 3 bed
- The garden has become difficult to maintain
- You may have a disability or mobility issues and your home is no longer suitable
- Adaptations can't be carried out because the property is not suitable
- You need to be nearer family/friends, shops or doctors, etc.

We can offer

- A smaller property that is cheaper and easier to manage
- A higher level of priority for housing
- Assistance with removals, decorating and carpeting
- Help and support from dedicated officers
- Advice about moving to a home in an area you prefer

home
fitme



Helping your house move happen

**For more information contact
the Homefit team on
01924 324343 or 01924 324317**