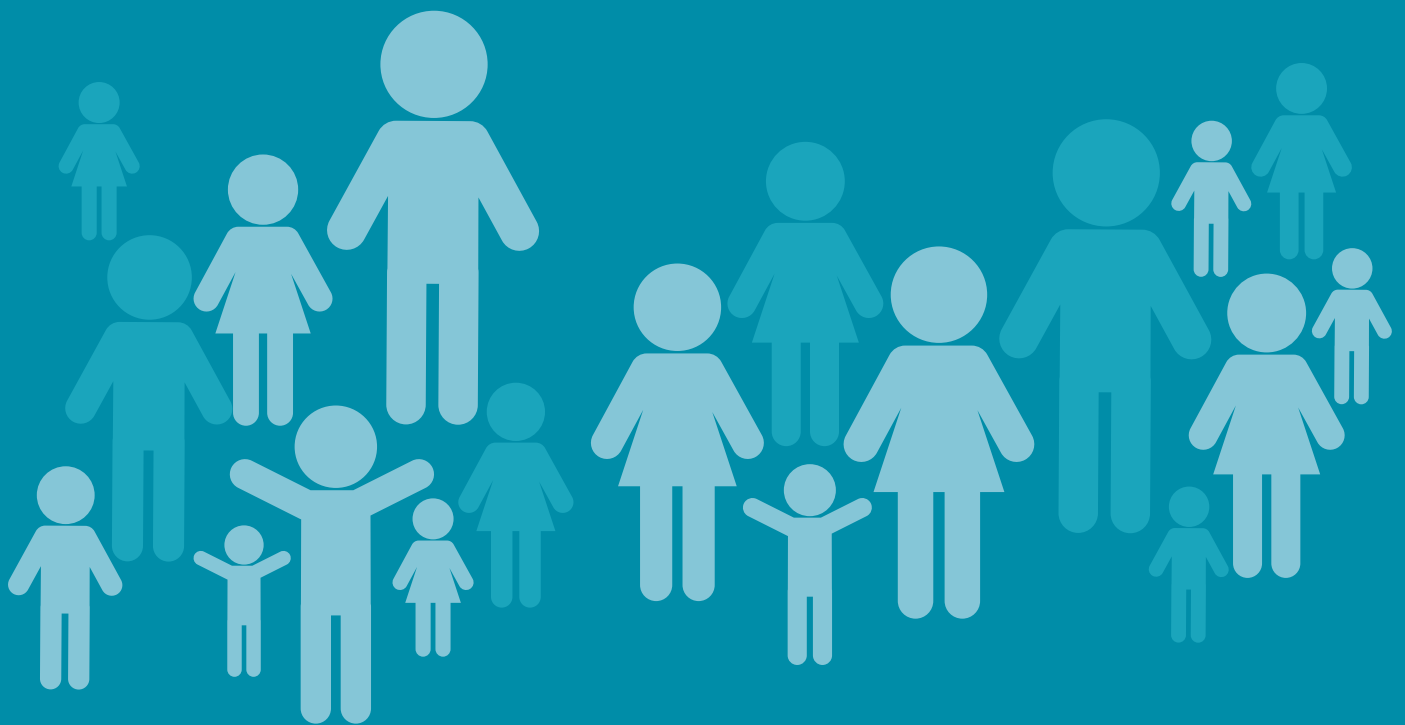


Kirklees Council

Directorate for Children and Young People Services

Ofsted local area inspection of SEND services

Fact sheet



Background

New duties on local areas regarding provision for children and young people with special educational needs and/or disabilities came into force in September 2014. Ofsted and the Care Quality Commission (CQC) are inspecting local areas on their effectiveness in fulfilling these duties.

The inspections evaluate how effectively the local area – not just the local authority - meets its responsibilities. The local area includes the local authority, CCGs, public health, NHS England for specialist services, early years settings, schools and further education providers.

The inspections look at how well a local area carries out its statutory duties in order to support the development of children and young people with SEND. It reviews how local areas support these children and young people to achieve the best possible educational and other outcomes, such as being able to live independently, secure meaningful employment and be well prepared for their adult lives.

When could the inspection happen in Kirklees?

All local areas will be inspected at least once during a five-year period. The next possible period for Kirklees is in September 2016.

Where evidence suggests that there are concerns about a local area, it may be inspected earlier than planned. This may occur where Ofsted or CQC have significant concerns about how well an area is fulfilling its responsibilities, including in relation to:

- the academic achievement of relevant children and young people over time, taking account of both attainment and progress
- rates of attendance and exclusion for relevant children and young people
- the destinations of relevant children and young people including data for young people not in education, employment or training (NEET)
- the outcomes of any inspections of local authorities and of educational establishments, and health services carried out by Ofsted or CQC
- complaints received about providers or services that are regulated or inspected by CQC and/or Ofsted
- local area performance in the completion of assessments and the making of education, health and care plans within the statutory timescales
- rates of appeal to the First-Tier Tribunal (Health Education and Social Care Chamber)
- any other significant and relevant concerns

The lead HMI will normally contact the local authority's director of children's services by telephone to announce the inspection five working days before the inspection

Scope of inspection

The inspection team will be led by an HMI from Ofsted and will include a Children's Services Inspector from the CQC, and an Ofsted Inspector usually recruited from a local authority but without connection to the local area being inspected. Inspections do not normally last longer than five days.

Inspectors will consider how effectively the local area identifies, meets the needs of and improves the outcomes of the wide range of different groups of children and young people with SEND. They will focus on the contribution of education, social care and health services.

Inspectors will visit nurseries, schools, colleges and specialist services, such as speech and language therapy, CAMHS services, occupational therapy, physiotherapy, specialist equipment, emergency provision and a range of nursing support. These activities are to assess how all local providers and agencies work collaboratively. It is important to note that when inspectors visit providers, these providers are not under inspection but remain subject to their separate inspection arrangements.

The starting point for inspection is an expectation that the local area should have a good understanding of how effective it is. Leaders for the local area should be able to accurately assess how well the local area meets its responsibilities and should have an understanding of strengths and aspects that require further development.

Before the inspection – Ofsted's preparation

The inspectors will view a wide range of material relevant to children and young people with SEND. This will include:

- schools data (outcomes, attendance, exclusions)
- Destinations after leaving education, including NEETs
- Timescales for statutory assessment
- Local Offer
- Local Authority short break statement
- JSNA
- Joint Health and Well-Being Strategy
- SEND Strategy
- Relevant Serious Case Reviews
- Performance data – Healthy Child Programme, School Nursing Service, Neo-natal screening programme, 0 – 25 services for CAMHS, SALT, OT, Physiotherapy
- Complaints to Ofsted and CQC

Before the inspection – what do YOU need to do?

The Project Board has developed a Self-Evaluation Form as an overarching statement of our position. This is supported by a detailed Implementation Plan and further supporting evidence trails.

Those officers and managers who were invited to an inspection briefing must:

- Read the supporting documentation and work sheets that were issued at the briefing – the links to the Ofsted handbook and framework are at the bottom of this fact sheet.
- Complete the work sheet with reference to their own team (not all of the work sheet will be relevant to you)
- Ensure that the worksheets are continually updated – you will need these as a prompt should you be called to speak to an inspector during the inspection
- Prioritise any emails you receive about the inspection – these will provide you with useful updates and information
- Liaise with [Kim Dyson](#), SEND Inspection Project Officer, when required. Initially this will be during August and September in order to contribute to the self-evaluation document
- Contact Kim if you need any further information. Kim will direct you to the right person to help with your query: kimberley.dyson@kirklees.gov.uk

If you were not invited to a briefing, but your role includes working with children and young people (up to 25 years of age) with SEND, speak to your manager about the part your team will play in any future inspection or get in touch with us.

What will be involved in the inspection?

The inspection will cover and report on the following **key judgements**:

- effectiveness in identifying children and young people who have special educational needs and/or disabilities
- effectiveness in assessing and meeting their needs
- effectiveness in improving their outcomes

The inspection team will use a range of methods to evaluate effectiveness:

- meetings with a range of leaders from education, health and social care agencies to discuss and evaluate their impact in leading provision
- meetings with children and young people to discuss their views and experiences
- meetings with parents and carers to hear their views, discuss their involvement in identifying and assessing their children's needs and review how well they are engaged in working with leaders across the local area

- scrutinising documentary evidence used by the local area to plan and evaluate the impact of their work
- visit a range of agencies and providers to meet with staff and review documentary evidence
- interview staff across the local area to understand the impact of the local area's effectiveness

In reaching their judgements, inspectors will pay particular attention to:

- the accuracy and rigour of the local area's self-evaluation, the extent to which the local area knows its strengths and weaknesses, and what it needs to do further to improve the life chances of children and young people with SEND
- to what extent the outcomes for children and young people are improving as a result of the collective actions and support of local agencies and bodies
- the efficiency of identifying special educational needs and disabilities
- the timeliness and usefulness of assessment
- how well local agencies and bodies plan and coordinate their work
- how well the local area engages with children and young people, and their parents and carers, to inform decisions
- how well the local area involves the individual child or young person, and their parents and carers, in the process of assessing their needs
- how well the local area communicates with children and young people, and their parents or carers, to ensure that these primary users are clear about the identification and assessment processes and the criteria used to make decisions
- the extent to which the local area gives due regard to its duties under the Equality Act 2010 to children and young people with SEND

What happens afterwards?

The outcomes of the inspection will be in narrative form – the local area will not be assessed in terms of outstanding, good, requires improvement or inadequate. The outcome will include areas of strength and key priorities for improvement. It will be published on the Ofsted and CQC websites, usually within 33 days of the end of an inspection.

More information

For more information about the SEND inspection please contact [Mandy Cameron](#) or [Claire Fisher](#)

Helpful links

[Ofsted Framework for SEND inspections](#)

[Ofsted Handbook for SEND inspections](#)

[Ofsted article on first SEND inspections](#)