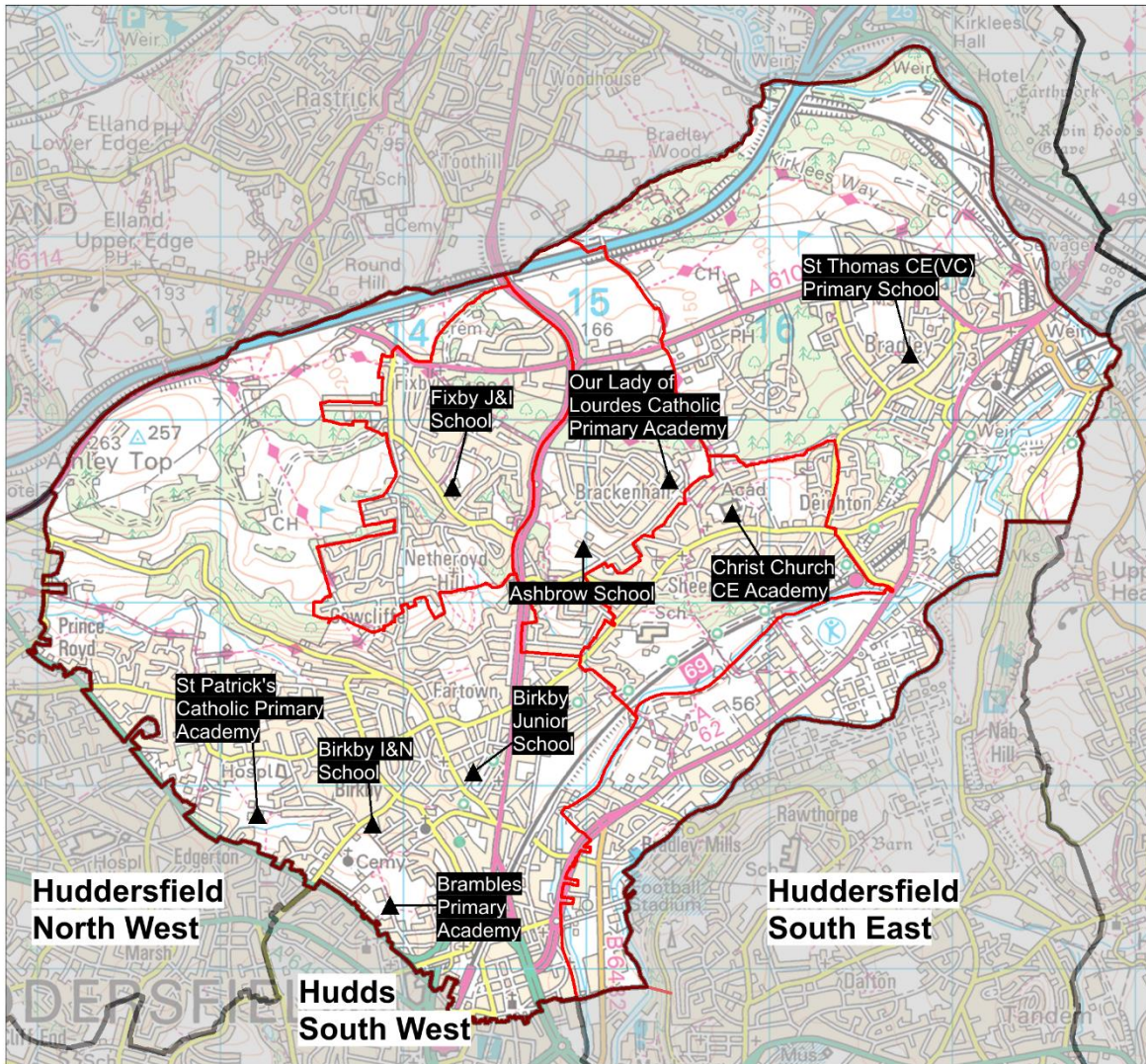


Planning Area 14: Huddersfield North



Contains Ordnance Survey data
© Crown Copyright and database right 2023

- ❖ Ashbrow School
- ❖ Birkby I & N School
- ❖ Birkby Junior School
- ❖ Brambles Primary Academy
- ❖ Christ Church CE Academy
- ❖ Fixby J & I School
- ❖ Our Lady of Lourdes Catholic Primary Academy
- ❖ St Patrick's Catholic Primary Academy (*Hudds*)
- ❖ St Thomas CE(VC) Primary School

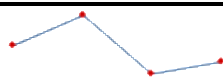
Overview: The chart on page 149 (and Table B on page 150) shows the demand for Reception places from children resident in this planning area is expected to decline with some fluctuations.

A PAN reduction has been determined for Birkby I & N School from 2024/25. The PAN will reduce from 150 to 120.

In **2022/23** there were a number of unfilled places at most schools.

In **2023/24** there were unfilled places at national offer day across over half of the schools that admit Reception age children. The pattern of pupil distribution illustrates that the majority of children (70%) living in the planning area attend schools in the area, with a number of pupils (13%) attending schools here from neighbouring planning areas. Parental preference continues to be a factor in the migration to neighbouring planning areas and schools in Calderdale LA which borders this planning area, however, this may change over time.

For **2024, 2025 and 2026** population data indicate a continued declining trend overall. There are three housing development sites with planning permission. Two sites, providing approximately 320 dwellings in total, have commenced and are expected to be completed in around two years. The third, providing 252 dwellings, has also commenced but isn't expected to be completed for around three years. Where demand may exceed capacity in the neighbouring Huddersfield North West planning area, capacity remains available in schools in this planning area that can meet this need, with a re-balancing of demand and parental preference over time. There is also a proposed strategic housing development site in the Local Plan, the impact of this site on school places remains under constant review. There is no need for additional places at this time.

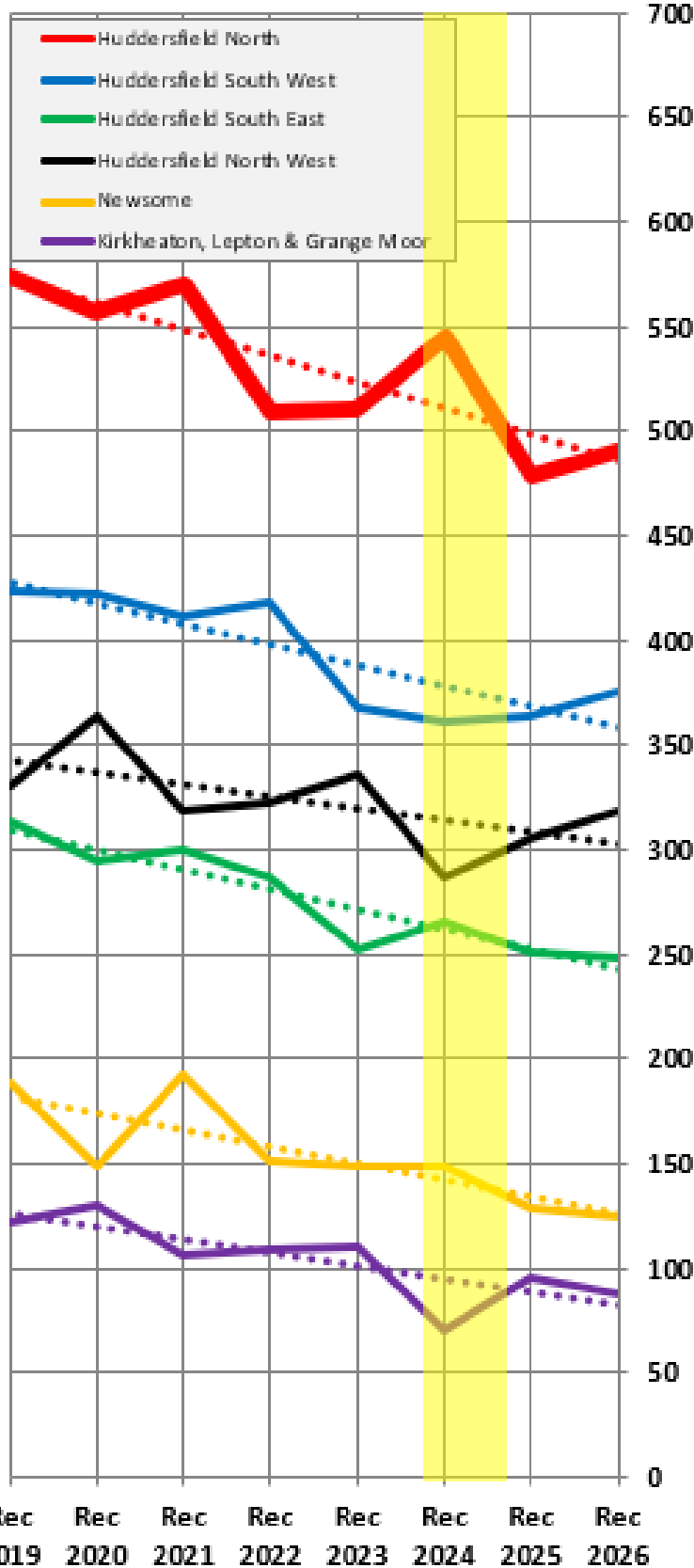
Place planning summary for Planning Area 14. Huddersfield North	
Place planning data for three cohorts of children: Reception, Y1 and Y2 <i>From NHS Oct 2022 and School Census Jan 2023</i> <i>Note numbers in [square brackets] show the average number of children per year group</i>	
1701 [567] children live in this PA (NHS) <ul style="list-style-type: none"> 1192 [397] go to schools in this PA 165 [55] go to schools in other Kirklees PAs 5 [2] go to schools in non-mainstream provisions 101 [34] go to schools in other LAs 238 [79] are unknown 	1392 [464] children go to school in this PA (Census) <ul style="list-style-type: none"> 1192 [397] Live in this PA 186 [62] Live in other PAs 14 [5] Live outside Kirklees
Average number of places used per year group Number of reception places available Trend in number of children living in this PA per year group	464 465  Decline with fluctuations
Place planning strategy (assuming current patterns of migration, housing occupancy, parental preference etc) <ul style="list-style-type: none"> Based on population data the projected need for places is below the capacity of available places On balance, slightly more children travel IN to schools in the PA from neighbouring PAs than travel out to schools in other PAs No need for additional places. This will be kept under review in light of all potential and ongoing housing development. 	

Planning Area 14. Huddersfield North
Chart showing pupil population trends and available school places

population trends in neighbouring planning areas
 Reception 2019 to Reception 2026 (NHS)

number of
 reception
 places in
 planning area
 (PAN 2024/25)

The dotted lines show the
 underlying trend in the size of
 the population for the area



The chart above shows the size of each year group in the child population in the planning area and the neighbouring planning areas for Reception cohorts Sep 2019 to Sep 2026. The dotted line shows the underlying trend in the size of the pupil population for each area.

The bar chart shows the number of Reception class places available in each planning area, based on the Published Admission Numbers (PANs) of the schools in the area. The yellow shading highlights the data for Reception classes in September 2024.

Planning Area 14, Huddersfield North																		
Table A. Number on roll - pupil census January 2023																		
School Name	PAN 2024/25	Admission Limit / PAN	Nursery					Primary										Total Pupils
	KS1	KS2	< 2 PT	2+ PT	3+ PT	4+ PT	FT	4+ PT	4+ FT	5+	6+	7+	8+	9+	10+			
Ashbrow School	60	60	0	1	23	0	0	0	40	59	58	59	58	60	61	419		
Birkby I & N School	120		0	16	67	0	5	0	122	136	143	1	0	0	0	490		
Birkby Junior School		150	0	0	0	0	0	0	0	0	0	136	140	149	149	574		
Brambles Primary Academy	60	60	0	0	0	0	0	0	59	58	57	51	33	0	0	258		
Christ Church CE Academy	30	30	0	2	18	0	0	0	30	27	30	23	29	30	30	219		
Fixby J & I School	45	45	0	0	0	0	0	0	44	44	45	45	44	47	45	314		
Our Lady Of Lourdes Catholic Primary School	30	30	0	3	16	0	0	0	28	30	31	29	30	30	29	226		
St Patrick's Catholic Primary School (Huddersfield)	60	60	0	0	0	0	0	0	58	61	58	60	60	60	60	417		
St Thomas CE(VC) Primary School	60	60	0	0	0	0	0	0	53	60	60	59	60	58	59	409		
	465	495	0	22	124	0	5	0	434	475	482	463	454	434	433			

Planning Area 14 Huddersfield North															
Table B. Number of pupils in each year cohort resident in the planning area - school year 2022-23 - (NHS Oct2022)															
future reception year groups				Infant 2022/23			Junior 2022/23				Secondary 2022/23				
Reception Sep 2026	Reception Sep 2025	Reception Sep 2024	Reception Sep 2023	Early years/KS1			Key Stage 2				Key Stage 3			KS4	
				Reception 2022/23	Year 1	Year 2	Year 3	Year 4	Year 5	Year 6	Year 7	Year 8	Year 9	Year 10	Year 11
491	478	545	511	509	570	557	574	576	596	554	590	599	593	496	534

Planning Area 14. Huddersfield North

**Table C: Where do children living in the Huddersfield North planning area go to school?
Reception - Year 6 (Jan 2023)**

School Attended	Ashbrow School	Birkby I & N School / Birkby Junior School	Christ Church CE Academy	Fixby J & I School	St Thomas CE (VC) Primary School	Grand Total
All Hallows' CE(VA) Primary School		1			3	4
Ashbrow School	150	77	116	4	26	373
Battysford CE(VC) Primary School					9	9
Beaumont Primary Academy	2	9	2	1	3	17
Berry Brow I & N School		2	1			3
Birdsedge First School		1				1
Birkby I & N School	17	347	3	1	10	378
Birkby Junior School	11	492	12	6	20	541
Brambles Primary Academy	10	127	5	2	6	150
Carlinghow Academy			2			2
Christ Church CE Academy	22	18	132		18	190
Crossley Fields J & I School					1	1
Crow Lane Primary and Foundation Stage School		2				2
Dalton School	1	2			3	6
Farnley Tyas CE (VC) First School					2	2
Fixby J & I School	55	136	35	46	15	287
Golcar J I & N School		1				1
Gomersal Primary School					1	1
Hartshead J & I School			1		4	5
Heaton Avenue, A SHARE Primary Academy				1		1
Hillside Primary School		4				4
Honley CofE (VC) Junior, Infant and Nursery School		3				3
Howard Park Community School		1	1			2
Kirkheaton Primary School	1		3	1	9	14
Lepton CE Primary Academy		2			1	3
Lindley Church of England Infant School	1	15				16
Lindley Junior School	1	33		3		37
Linthwaite Ardron CE (VA) J & I School			1			1
Linthwaite Clough J I & Early Years Unit					1	1
Lowerhouses CE (VC) J I & EY School		2				2
Luck Lane, A SHARE Primary Academy		26	1		3	30
Meltham Moor Primary School		2				2
Moldgreen Community Primary School		5			6	11
Moorlands Primary School	2	20				22
Mount Pleasant Primary School		6	4	1	3	14
Netherhall Learning Campus Junior School	2	15	7		42	66
Netherhall St James C of E (VC) Infant and Nursery School	3	3	6		35	47
Netherthong Primary School		1				1
Newsome Junior School	1	4	1		1	7
Norrithorpe J & I School					2	2
Oak CofE Primary School		10				10
Old Bank Academy					2	2
Our Lady of Lourdes Catholic Primary Academy	82	20	77	1	22	202
Paddock J I & N School		10			1	11
Purlwell I & N School				1		1
Ravensthorpe CE (VC) Junior School			1			1
Reinwood Community Junior School		19		1	3	23
Reinwood I & N School		10	1			11
Rowley Lane J I & N School		2				2
Scapegoat Hill J & I School		3				3
Shelley First School		2				2
Spring Grove J I & N School		16				16
St Aidan's Church of England Academy			1			1
St John's CE(VA) J & I School		1				1
St Joseph's Catholic Primary Academy Huddersfield	1	8			2	11
St Patrick's Catholic Primary Academy (Huddersfield)	6	197	9	7	13	232
St Thomas CE (VC) Primary School	17	9	38	4	326	394
Westmoor Primary School					2	2
Windmill CE(VC) Primary School	1					1
Grand Total	386	1664	460	80	595	3185

Planning Area 14. Huddersfield North

Table D: Where do children attending school in Huddersfield North live?

Reception - Year 6 (Jan 2023)

School Attended

PAA of Residence	Ashbrow School	Birkby I & N School	Birkby Junior School	Brambles Primary Academy	Christ Church CE Academy	Fixby J & I School	Our Lady of Lourdes Catholic Primary Academy	St Patrick's Catholic Primary Academy (Huddersfield)	St Thomas CE (VC) Primary School	Grand Total
All Hallows' CE (VA) Primary School / Hill View Academy KS2			1	1				3		5
Ashbrow School	150	17	11	10	22	55	82	6	17	370
Battysford C E (VC) Primary School	1									1
Berry Brow I & N School / Newsome Junior School	1	2					1	1	1	6
Birkby I & N School / Birkby Junior School	77	347	492	127	18	136	20	197	9	1423
Birkenshaw CE(C) Primary School									1	1
Brockholes CE (VC) J & I School				1						1
Christ Church CE Academy	116	3	12	5	132	35	77	9	38	427
Crow Lane Primary and Foundation Stage School			2					5		7
Dalton Junior Infant and Nursery School		1	2	1		2		3	1	10
Emley First School		2								2
Fixby J & I School	4	1	6	2		46	1	7	4	71
Golcar J I & N School				1				2		3
Gomersal St Mary's CE(VC) Primary School / Gomersal Primary School						3				3
Grange Moor Primary School						2				2
High Bank J I & N School					1					1
Hill View Academy		1	1					1	2	5
Hillside Primary School	1	1	1	2	2			2		9
Kirkheaton Primary School								1		1
Lepton CofE Primary Academy								2		2
Lindley Church of England Infant School / Lindley Junior School	1	3	5	16		1		40		66
Linthwaite Clough J I & Early Years Unit								4		4
Lowerhouses CE (VC) Junior Infant and Early Years School	3		2	3	1			5		14
Luck Lane, A SHARE Primary Academy	1	1	5				1	4		12
Marsden I & N School / Marsden Junior School				2						2
Moldgreen Community Primary School				1				1		2
Moorlands Primary School	1	1	3	5				13	2	25
Mount Pleasant Primary School								2		2
Netherhall St James CE(VC) I & N School / Netherhall Learning Campus Junior School	1	1	1	3	1	3	1	2		13
Netherton I & N School / South Crosland CE (VA) Junior School	1							2		3
Nields J I & N School				2						2
Norristhorpe J & I School	2									2
Oak CE (VC) Primary School (Junior)/Beaumont Primary Academy			2	10	2	2	2	16		34
Old Bank Academy									7	7
Paddock J I & N School		2	1	8		1		14		26
Reinwood I & N School / Reinwood Community Junior School		6	3	16				43		68
Rowley Lane J I & N School	1									1
Spring Grove J I & N School		2	2	33				10		47
St Thomas CE (VC) Primary School	26	10	20	6	18	15	22	13	326	456
Wellhouse J & I School								2		2
Whitechapel Church of England Primary School					2					2
Woodside Green, A SHARE Primary Academy	1		2	2				2		7
Grand Total	388	401	574	257	199	301	207	412	408	3147

Tables E(i) to E(iii) below show how Reception places were allocated in this planning area at each of the last three National Offer Days, compared to the number of Reception places available at each school and the number of applicants resident in each school's Priority Admission Area (PAA). Blanks in the tables indicate a school does not have a PAA.

Table E(i)

2023/24	PAN	No of applicants living in PAA	No of places allocated	Vacancies	Waiting list
Huddersfield North					
Ashbrow School	60	63	57	3	0
Birkby I & N School	150	208	120	30	0
Brambles Primary Academy	60		55	5	0
Christ Church CE Academy	30	76	30	0	1
Fixby J & I School	45	25	45	0	9
Our Lady of Lourdes Catholic Primary Academy	30		30	0	1
St Patrick's Catholic Primary Academy (Huddersfield)	60		42	18	0
St Thomas CE (VC) Primary School	60	79	51	9	0
	495	451	430	65	11

Table E(ii)

2022/23	PAN	No of applicants living in PAA	No of places allocated	Vacancies	Waiting list
Huddersfield North					
Ashbrow School	60	46	37	23	0
Birkby I & N School	150	207	111	39	0
Brambles Primary Academy	60		49	11	0
Christ Church CE Academy	30	64	26	4	0
Fixby J & I School	45	14	39	6	0
Our Lady of Lourdes Catholic Primary Academy	30		30	0	1
St Patrick's Catholic Primary Academy (Huddersfield)	60		60	0	0
St Thomas CE (VC) Primary School	60	83	48	12	0
	495	414	400	95	1

Table E(iii)

2021/22	PAN	No of applicants living in PAA	No of places allocated	Vacancies	Waiting list
Huddersfield North					
Ashbrow School	60	62	60	0	2
Birkby I & N School	150	216	125	25	0
Brambles Primary Academy	60		34	26	0
Christ Church CE Academy	30	54	23	7	0
Fixby J & I School	45	28	43	2	0
Our Lady of Lourdes Catholic Primary School	30		26	4	0
St Patrick's Catholic Primary School (Huddersfield)	60		56	4	0
St Thomas CE (VC) Primary School	60	93	55	5	0
	495	453	422	73	2