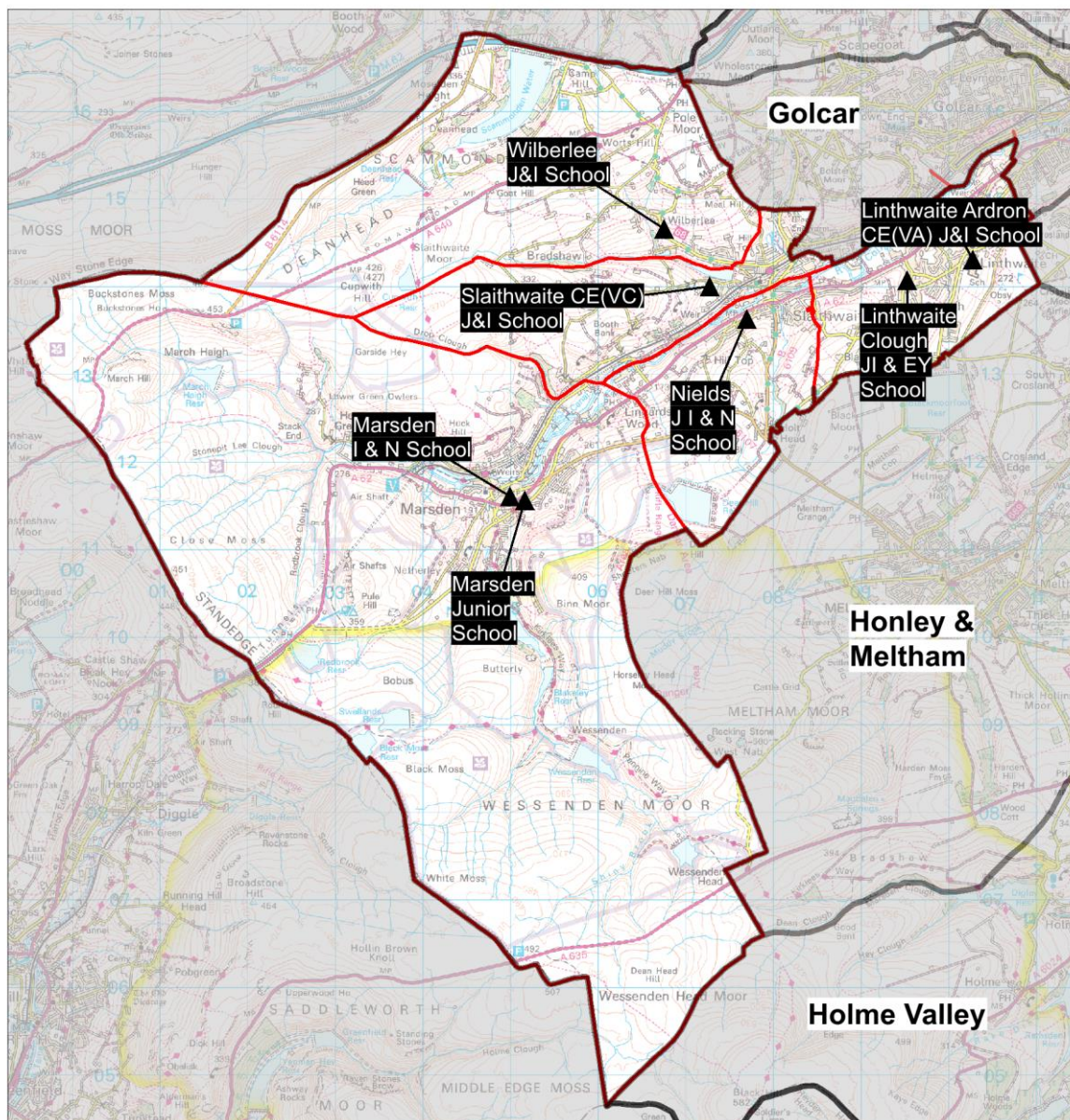


Planning Area 6: Colne Valley



Contains Ordnance Survey data

© Crown Copyright and database right 2023

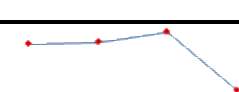
- ❖ Linthwaite Ardron CE(VA) J & I School
- ❖ Linthwaite Clough J I & EY Unit
- ❖ Marsden I & N School
- ❖ Marsden Junior School
- ❖ Nields J I & N School
- ❖ Slaitwaite CE(VC) J & I School
- ❖ Wilberlee J & I School

Overview: The chart on page 92 (and Table B on page 93) shows the demand for Reception places from children resident in this planning area is expected to decline overall. This planning area includes more rural parts of the authority, where several schools serve villages that are some distance apart.

In 2022/23 there were a number of unfilled places across almost all schools.

In 2023/24 there were a number of unfilled places at national offer day at half of the schools that admit Reception age children. The pattern of pupil distribution illustrates that the majority of children (78%) living in the planning area attend schools in the area, with a number of pupils (17%) attending schools here from neighbouring planning areas.

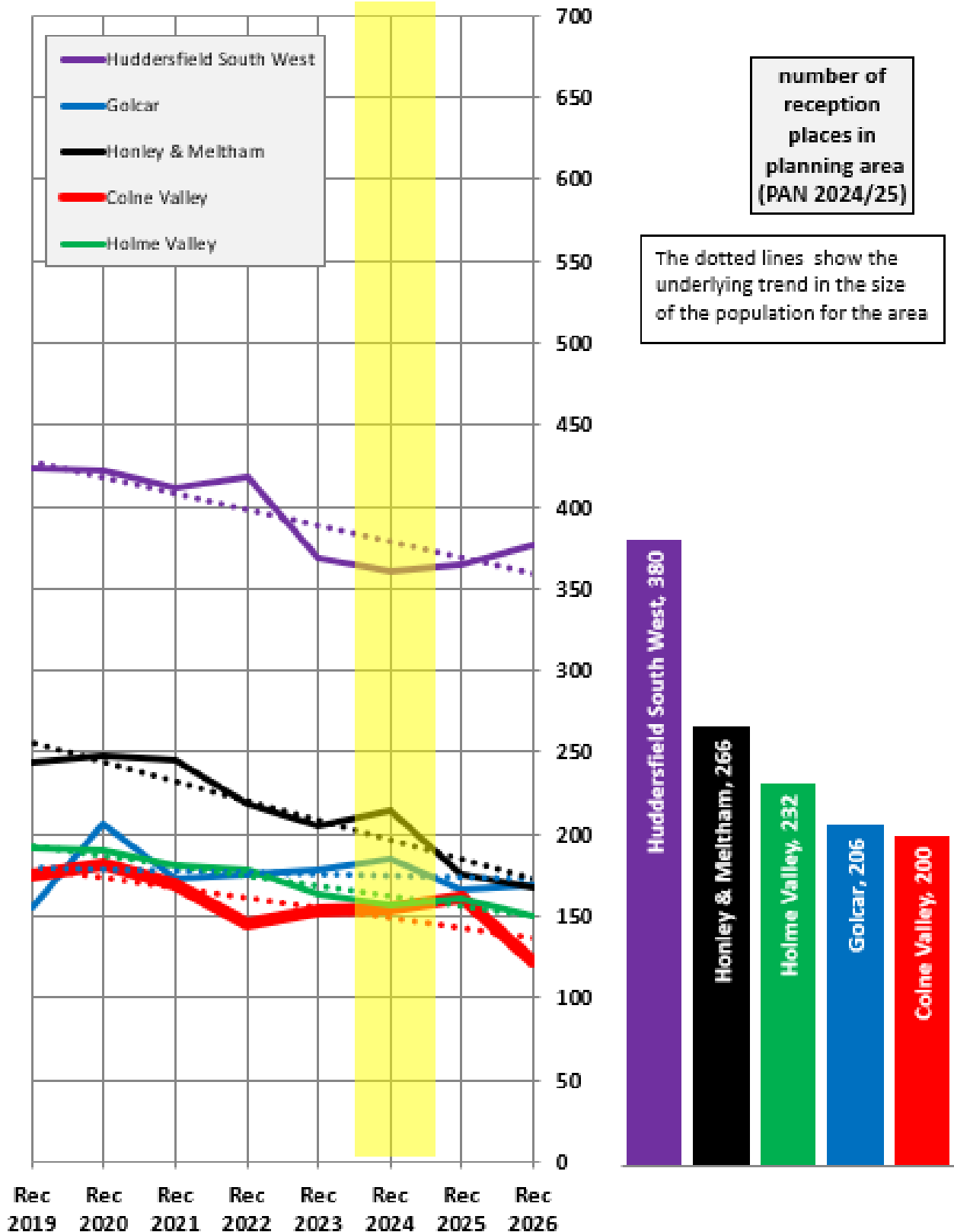
For 2024, 2025 and 2026 population data indicate a declining trend towards 2026 albeit with a small peak in 2025. There is a housing development site with planning permission for 125 dwellings where building has commenced and is expected to take around two years to complete. Engagement is required with the local school system about the level of surplus places in this planning area and opportunities that may exist.

Place planning summary for Planning Area 6. Colne Valley	
Place planning data for three cohorts of children: Reception, Y1 and Y2 From NHS Oct 2022 and School Census Jan 2023 Note numbers in [square brackets] show the average number of children per year group	
527 [176] children live in this PA (NHS) <ul style="list-style-type: none"> 412 [137] go to schools in this PA 50 [17] go to schools in other Kirklees PAs 1 [0] go to schools in non-mainstream provisions 14 [5] go to schools in other LAs 50 [17] are unknown 	497 [166] children go to school in this PA (Census) <ul style="list-style-type: none"> 412 [137] Live in this PA 85 [28] Live in other PAs 0 [0] Live outside Kirklees
Average number of places used per year group Number of reception places available Trend in number of children living in this PA per year group	<div style="display: flex; align-items: center;"> <div style="margin-right: 20px;"> 166 200 </div>  </div> <p>Decline with fluctuations</p>
Place planning strategy (assuming current patterns of migration, housing occupancy, parental preference etc) <ul style="list-style-type: none"> Based on population data the projected need for places is below the capacity of available places On balance, slightly more children travel IN to schools in the PA from neighbouring PAs than travel out to schools in other PAs Engagement is required with the local school system about the level of surplus places in this planning area and opportunities that may exist. 	

Planning Area 6. Colne Valley

Chart showing pupil population trends and available school places

population trends in neighbouring planning areas
Reception 2019 to Reception 2026 (NHS)



number of
reception
places in
planning area
(PAN 2024/25)

The dotted lines show the
underlying trend in the size
of the population for the area

The chart above shows the size of each year group in the child population in the planning area and the neighbouring planning areas for Reception cohorts Sep 2019 to Sep 2026. The dotted line shows the underlying trend in the size of the pupil population for each area.

The bar chart shows the number of Reception class places available in each planning area, based on the Published Admission Numbers (PANs) of the schools in the area. The yellow shading highlights the data for Reception classes in September 2024.

Planning Area 6. Colne Valley																		
Table A. Number on roll - pupil census January 2023																		
School Name	PAN		Nursery					Primary								Total Pupils		
	2024/25	Admission Limit / PAN	< 2 PT	2+ PT	3+ PT	4+ PT	FT	4+ PT	4+ FT	5+	6+	7+	8+	9+	10+			
	KS1	KS2																
Linthwaite Ardron CE (A) J & I School	30	30	0	0	0	0	0	0	25	27	30	26	30	26	24	188		
Linthwaite Clough J I & E Y School	45	45	0	3	8	0	1	0	29	36	44	42	43	43	34	283		
Marsden I & N School	60		0	0	0	0	0	0	36	52	34	0	0	0	0	122		
Marsden Junior School		60	0	0	0	0	0	0	0	0	0	40	38	57	45	180		
Nields J I & N School	30	30	0	0	0	0	0	0	26	22	30	28	26	31	28	191		
Slaitthwaite CE (VC) J & I School	23	23	0	0	0	0	0	0	23	25	24	24	23	23	24	166		
Witberlee J & I School	12	12	0	0	0	0	0	0	12	9	12	12	11	11	11	78		
	200	200	0	3	8	0	1	0	151	171	174	172	171	191	166			

Planning Area 6 Colne Valley															
Table B. Number of pupils in each year cohort resident in the planning area - school year 2022-23 - (NHS Oct2022)															
future reception year groups				Infant 2022/23			Junior 2022/23				Secondary 2022/23				
				Early years/KS1			Key Stage 2				Key Stage 3			KS4	
Reception Sep 2026	Reception Sep 2025	Reception Sep 2024	Reception Sep 2023	Reception 2022/23	Year 1	Year 2	Year 3	Year 4	Year 5	Year 6	Year 7	Year 8	Year 9	Year 10	Year 11
122	162	155	153	146	170	182	175	175	191	171	189	189	200	184	181

Planning Area 6. Colne Valley

Table C: Where do children living in the Colne Valley planning area go to school?

Reception - Year 6 (Jan 2023)

School Attended	Linthwaite Clough J I & Early Years Unit	Marsden I & N School / Marsden Junior School	Nields J I & N School	Slaithwaite CE (VC) J & I School	Wilberlee J & I School	Grand Total
Beaumont Primary Academy	2					2
Brambles Primary Academy		2	2			4
Clough Head J & I School	4		4	1	9	18
Crow Lane Primary and Foundation Stage School	1					1
Dalton School	1					1
Golcar J I & N School	7		2	1	1	11
Helme Church of England Academy	9	3	2	5		19
Holme J & I School	2					2
Lepton CE Primary Academy	1					1
Linthwaite Ardron CE (VA) J & I School	97		1	4		102
Linthwaite Clough J I & Early Years Unit	184	2	6	7	4	203
Marsden I & N School	5	107	4	1		117
Marsden Junior School	5	164	3		1	173
Meltham CE (VC) Primary School	1		2			3
Moorlands Primary School					3	3
Mount Pleasant Primary School		1				1
Netherthong Primary School			1	2		3
Nields J I & N School	13	7	123	16	8	167
Paddock J I & N School	2		1			3
Reinwood Community Junior School	2	1				3
Reinwood I & N School		1				1
Scapegoat Hill J & I School	1				1	2
Slaithwaite CE (VC) J & I School	8	2	15	108	17	150
South Crosland CE (VA) Junior School	4		1			5
St John's CE(VA) J & I School	3	1		1		5
St Patrick's Catholic Primary Academy (Huddersfield)	4					4
Wellhouse J & I School	14		1	7	5	27
Wilberlee J & I School	9	1	7	21	35	73
Woodside Green, A SHARE Primary Academy	10					10
Grand Total	389	292	175	174	84	1118

Planning Area 6. Colne Valley

Table D: Where do children attending school in Colne Valley live?

Reception - Year 6 (Jan 2023)

School Attended

PAA of Residence	Linthwaite Ardron CE (VA) J & I School	Linthwaite Clough J I & Early Years Unit	Marsden I & N School	Marsden Junior School	Nields J I & N School	Slaithwaite CE (VC) J & I School	Wilberlee J & I School	Grand Total
All Hallows' CE (VA) Primary School / Hill View Academy KS2		1						1
Berry Brow I & N School / Newsome Junior School		2						2
Christ Church CE Academy	1							1
Crow Lane Primary and Foundation Stage School	2	2			2			6
Denby Dale First and Nursery School			1					1
Golcar J I & N School	4	4		2	4	5	1	20
Hillside Primary School					1			1
Honley CE(VC) Junior, Infant & Nursery School		1				1		2
Lindley Church of England Infant School / Lindley Junior School	3							3
Linthwaite Clough J I & Early Years Unit	97	184	5	5	13	8	9	321
Luck Lane, A SHARE Primary Academy	1	2						3
Marsden I & N School / Marsden Junior School		2	107	164	7	2	1	283
Meltham CE (VC) Primary School					1	2		3
Meltham Moor Primary School		4		1	2	3		10
Moorlands Primary School	2					2		4
Netherthong Primary School			1					1
Netherton I & N School / South Crosland CE (VA) Junior School	1	1						2
Nields J I & N School	1	6	4	3	123	15	7	159
Oak CE (VC) Primary School (Junior)/Beaumont Primary Academy	12	14	1		2			29
Paddock J I & N School	3	1			2			6
Reinwood I & N School / Reinwood Community Junior School	2	2						4
Scapegoat Hill J & I School					2	2		4
Slaithwaite CE (VC) J & I School	4	7	1		16	108	21	157
St Thomas CE (VC) Primary School		1						1
Wellhouse J & I School		7			6	1	4	18
Wilberlee J & I School		4		1	8	17	35	65
Woodside Green, A SHARE Primary Academy	55	26	2	4	1			88
Grand Total	188	271	122	180	190	166	78	1195

Tables E(i) to E(iii) below show how Reception places were allocated in this planning area at each of the last three National Offer Days, compared to the number of Reception places available at each school and the number of applicants resident in each school's Priority Admission Area (PAA). Blanks in the tables indicate a school does not have a PAA.

Table E(i)

2023/24	PAN	No of applicants living in PAA	No of places allocated	Vacancies	Waiting list
Colne Valley					
Linthwaite Ardron CE (VA) J & I School	30		30	0	4
Linthwaite Clough J I & Early Years Unit	45	57	31	14	0
Marsden I & N School	60	27	28	32	0
Nields J I & N School	30	14	21	9	0
Slaithwaite CE (VC) J & I School	23	27	23	0	22
Wilberlee J & I School	12	22	12	0	12
	200	147	145	55	38

Table E(ii)

2022/23	PAN	No of applicants living in PAA	No of places allocated	Vacancies	Waiting list
Colne Valley					
Linthwaite Ardron CE (VA) J & I School	30		22	8	0
Linthwaite Clough J I & Early Years Unit	45	55	31	14	0
Marsden I & N School	60	34	34	26	0
Nields J I & N School	30	20	25	5	0
Slaithwaite CE (VC) J & I School	23	19	23	0	2
Wilberlee J & I School	12	15	12	0	0
	200	143	147	53	2

Table E(iii)

2021/22	PAN	No of applicants living in PAA	No of places allocated	Vacancies	Waiting list
Colne Valley					
Linthwaite Ardron CE (VA) J & I School	30		24	6	0
Linthwaite Clough J I & Early Years Unit	45	57	41	4	0
Marsden I & N School	60	54	51	9	0
Nields J I & N School	30	17	23	7	0
Slaithwaite CE (VC) J & I School	23	15	23	0	0
Wilberlee J & I School	12	17	12	0	0
	200	160	174	26	0