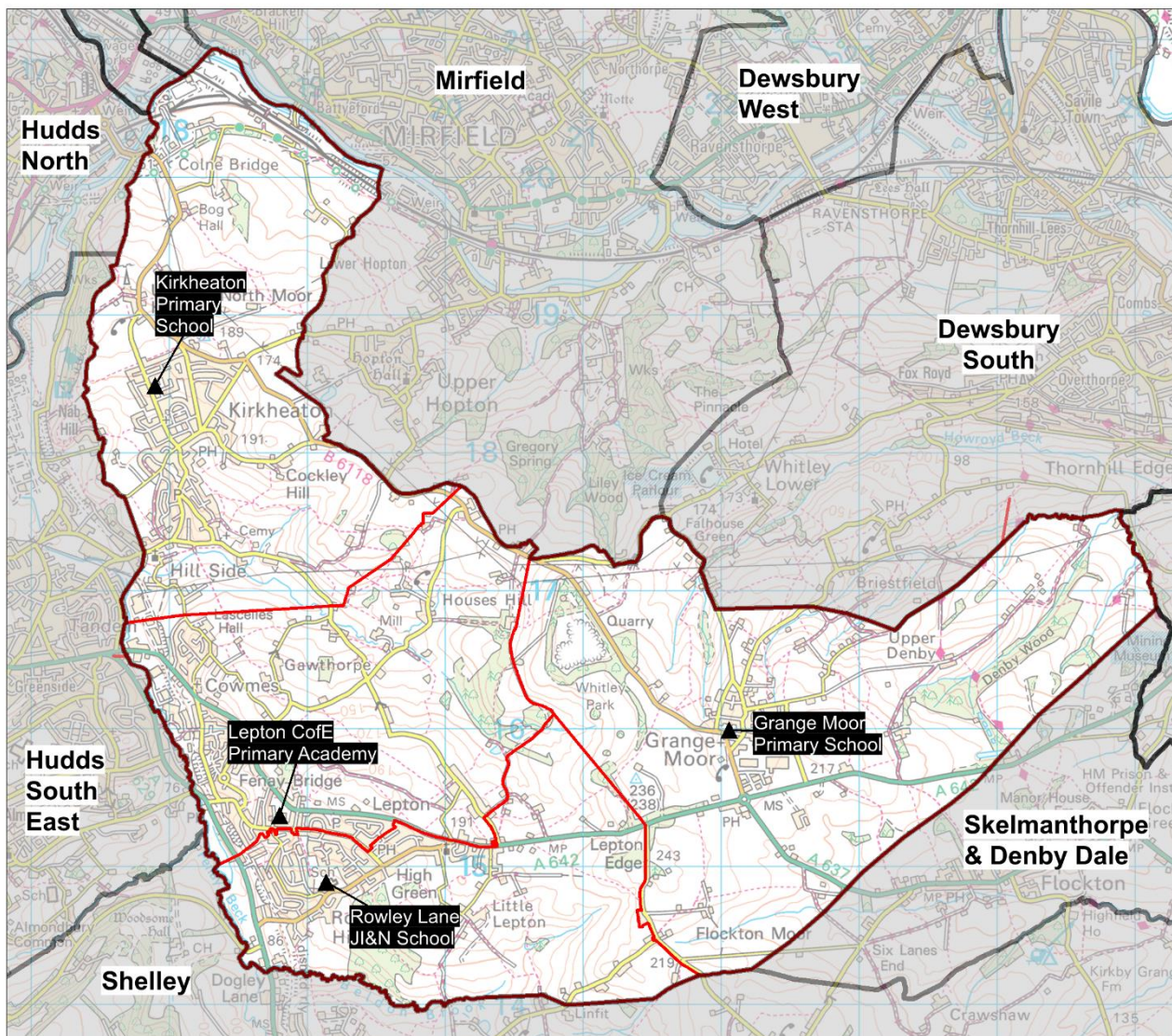


Planning Area 18: Kirkheaton, Lepton & Grange Moor



Contains Ordnance Survey data

© Crown Copyright and database right 2023

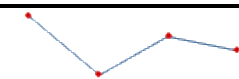
- ❖ Grange Moor Primary School
- ❖ Kirkheaton Primary School
- ❖ Lepton C of E Primary Academy
- ❖ Rowley Lane J I & N School

Overview: The chart on page 177 (and Table B on page 178) shows the demand for Reception places from children resident in this planning area is expected to decline slightly overall, but with some fluctuations. Schools are popular in this area with pupils securing places here from the neighbouring planning areas, mainly Huddersfield South East.

In 2022/23 there were a modest number of unfilled places at most schools.

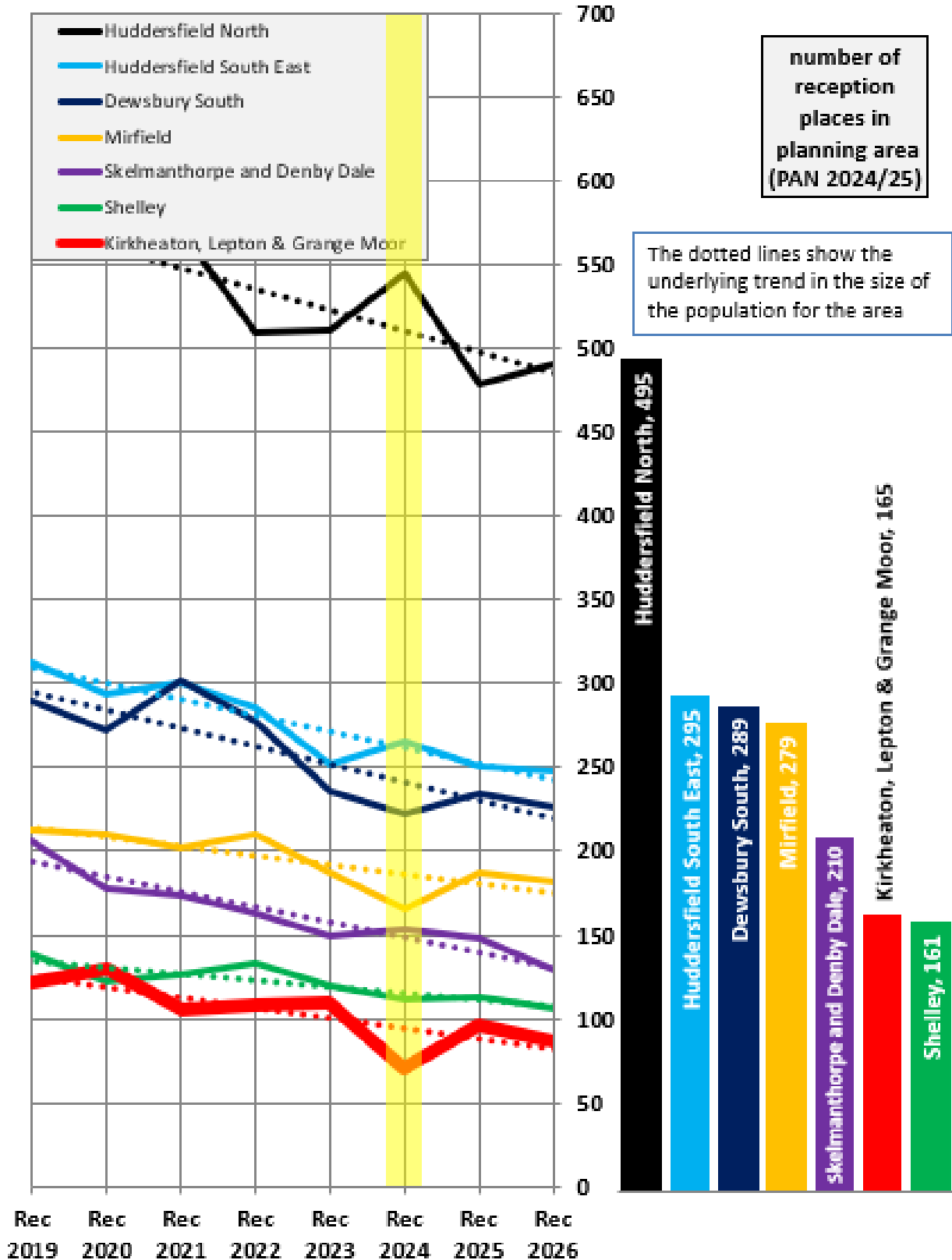
In 2023/24 there were a number of unfilled places at two schools at national offer day despite parental preference showing a continuing trend to secure places in this planning area from other areas. The pattern of pupil distribution illustrates that the majority of children (77%) living in the planning area attend schools in the area, with a significant number of pupils (36%) attending schools here from neighbouring planning areas.

For 2024, 2025 and 2026 population data indicate a slightly declining trend towards 2026, with a more significant single year dip in 2024. There are a number of housing developments proposed in the Local Plan which are likely to have an impact on demand in the longer term. However, with surplus places available and significant inward migration of children from outside the area, there is no need for any additional places.

Place planning summary for Planning Area 18. Kirkheaton, Lepton & Grange Moor	
Place planning data for three cohorts of children: Reception, Y1 and Y2 From NHS Oct 2022 and School Census Jan 2023 Note numbers in [square brackets] show the average number of children per year group	
358 [119] children live in this PA (NHS) <ul style="list-style-type: none"> 274 [91] go to schools in this PA 45 [15] go to schools in other Kirklees PAs 2 [1] go to schools in non-mainstream provisions 4 [1] go to schools in other LAs 33 [11] are unknown 	434 [145] children go to school in this PA (Census) <ul style="list-style-type: none"> 274 [91] Live in this PA 157 [52] Live in other PAs 3 [1] Live outside Kirklees
Average number of places used per year group Number of reception places available Trend in number of children living in this PA per year group	<div style="display: flex; align-items: center;"> <div style="margin-right: 20px;"> 145 165 </div>  </div> <p>Slight decline with fluctuations</p>
Place planning strategy (assuming current patterns of migration, housing occupancy, parental preference etc) <ul style="list-style-type: none"> Based on population data the projected need for places is below the capacity of available places On balance, considerably more children travel IN to schools in the PA from neighbouring PAs than travel out to schools in other PAs No need for additional places 	

Planning Area 18. Kirkheaton, Lepton & Grange Moor
Chart showing pupil population trends and available school places

population trends in neighbouring planning areas
 Reception 2019 to Reception 2026 (NHS)



The chart above shows the size of each year group in the child population in the planning area and the neighbouring planning areas for Reception cohorts Sep 2019 to Sep 2026. The dotted line shows the underlying trend in the size of the pupil population for each area.

The bar chart shows the number of Reception class places available in each planning area, based on the Published Admission Numbers (PANs) of the schools in the area. The yellow shading highlights the data for Reception classes in September 2024.

Planning Area 18. Kirkheaton, Lepton & Grange Moor																	
Table A. Number on roll - pupil census January 2023																	
School Name	PAN 2024/25	Admission Limit / PAN	Nursery					Primary									Total Pupils
	KS1	KS2	< 2 PT	2+ PT	3+ PT	4+ PT	FT	4+ PT	4+ FT	5+	6+	7+	8+	9+	10+		
Grange Moor Primary School	15	15	0	0	0	0	0	0	11	14	9	14	11	13	16	88	
Kirkheaton Primary School	60	60	0	2	27	0	1	0	48	45	57	52	41	52	52	377	
Lepton Cofe Primary Academy	30	33	0	0	0	0	0	0	24	24	24	29	22	34	26	183	
Rowley Lane J I & N School	60	66	0	0	20	0	12	0	59	58	58	64	58	62	56	447	
	165	174	0	2	47	0	13	0	142	141	148	159	132	161	150		

Planning Area 18 Kirkheaton, Lepton & Grange Moor															
Table B. Number of pupils in each year cohort resident in the planning area - school year 2022-23 - (NHS Oct2022)															
future reception year groups				Infant 2022/23			Junior 2022/23				Secondary 2022/23				
				Early years/KS1			Key Stage 2				Key Stage 3			KS4	
Reception Sep 2026	Reception Sep 2025	Reception Sep 2024	Reception Sep 2023	Reception 2022/23	Year 1	Year 2	Year 3	Year 4	Year 5	Year 6	Year 7	Year 8	Year 9	Year 10	Year 11
87	96	70	110	108	106	130	122	107	129	123	129	133	148	164	141

Planning Area 18. Kirkheaton, Lepton & Grange Moor

Table C: Where do children living in the Kirkheaton, Lepton & Grange Moor planning area go to school?

Reception - Year 6 (Jan 2023)

School Attended	Grange Moor Primary School	Kirkheaton Primary School	Lepton CofE Primary Academy	Rowley Lane J I & N School	Grand Total
All Hallows' CE(VA) Primary School			1		1
Ashbrow School				1	1
Battysford CE(VC) Primary School		4			4
Berry Brow I & N School		1			1
Birdsedge First School				1	1
Crossley Fields J & I School		3			3
Crowlees CE (VC) J & I School		4	1		5
Dalton School		7	11	4	22
Denby Dale First & Nursery School			1		1
Emley First School	1		2	2	5
Farnley Tyas CE (VC) First School				2	2
Fixby J & I School	2				2
Grange Moor Primary School	55	4	2	1	62
Highburton CE First Academy			3	8	11
Hill View Academy		3	2		5
Hopton Primary School		8			8
Kirkburton CE (VA) First School	1		4	2	7
Kirkburton Middle School			3	1	4
Kirkheaton Primary School	2	203	13	1	219
Lepton CE Primary Academy	2	3	85	11	101
Lindley Church of England Infant School			1		1
Lindley Junior School			1		1
Lowerhouses CE (VC) J I & EY School				1	1
Moldgreen Community Primary School			3		3
Netherhall Learning Campus Junior School	1	1	1		3
Netherthong Primary School			1		1
New Mill Junior School				1	1
Newsome Junior School		1	1		2
Oak CofE Primary School	3				3
Rowley Lane J I & N School	5	12	133	119	269
Scapegoat Hill J & I School		2			2
Scissett CE Academy			1		1
Shelley First School		2	4		6
St Joseph's Catholic Primary Academy Huddersfield		6	3	2	11
St Patrick's Catholic Primary Academy (Huddersfield)		1	2		3
Thurstonland Endowed (VC) First School				2	2
Grand Total	72	265	279	159	775

Planning Area 18. Kirkheaton, Lepton & Grange Moor

Table D: Where do children attending school in Kirkheaton, Lepton & Grange Moor live?

Reception - Year 6 (Jan 2023)

School Attended

PAA of Residence	Grange Moor Primary School	Kirkheaton Primary School	Lepton CE Primary Academy	Rowley Lane J I & N School	Grand Total
All Hallows' CE (VA) Primary School / Hill View Academy KS2		14	20	50	84
Ashbrow School		1			1
Battysford C E (VC) Primary School		1	1		2
Berry Brow I & N School / Newsome Junior School	1	1			2
Birkby I & N School / Birkby Junior School			2	2	4
Brockholes CE (VC) J & I School	2				2
Christ Church CE Academy		3			3
Crossley Fields J & I School		1			1
Dalton Junior Infant and Nursery School	1	40	22	23	86
Diamond Wood Community Academy / Ravensthorpe CE (VC) Junior School		1			1
Fixby J & I School		1			1
Flockton CE (VC) First School	7			1	8
Grange Moor Primary School	55	2	2	5	64
Highburton CE First Academy		2	1	7	10
Hill View Academy		21	22	43	86
Hillside Primary School		2	3		5
Hinchliffe Mill J & I School		1			1
Honley CE(VC) Junior, Infant & Nursery School				1	1
Hopton Primary School	1	7			8
Kirkburton CE (VA) First School	1		1	2	4
Kirkheaton Primary School	4	203	3	12	222
Lepton CofE Primary Academy	2	13	85	133	233
Lindley Church of England Infant School / Lindley Junior School			1		1
Linthwaite Clough J I & Early Years Unit			1		1
Lowerhouses CE (VC) Junior Infant and Early Years School				1	1
Moldgreen Community Primary School		5	2	4	11
Moorlands Primary School		1			1
Netherhall St James CE(VC) I & N School / Netherhall Learning Campus Junior School	1	15	1	4	21
Oak CE (VC) Primary School (Junior)/Beaumont Primary Academy			1	1	2
Overthorpe C of E Academy	4				4
Reinwood I & N School / Reinwood Community Junior School		1			1
Rowley Lane J I & N School	1	1	11	119	132
Scholes J & I School				1	1
Shelley First School				2	2
Shepley First School			1		1
Skelmanthorpe Academy School				2	2
Spring Grove J I & N School				1	1
St Thomas CE (VC) Primary School		9	1		10
Thornhill J & I School	2		1		3
Thornhill Lees CE (VC) I & N School / Headfield CE (VC) Junior School	1				1
Thurstonland Endowed (VC) First School				1	1
Upperthong J & I School				1	1
Grand Total	83	346	182	416	1027

Tables E(i) to E(iii) below show how Reception places were allocated in this planning area at each of the last three National Offer Days, compared to the number of Reception places available at each school and the number of applicants resident in each school's Priority Admission Area (PAA). Blanks in the tables indicate a school does not have a PAA.

Table E(i)

2023/24	PAN	No of applicants living in PAA	No of places allocated	Vacancies	Waiting list
Kirkheaton, Lepton & Grange Moor					
Grange Moor Primary School	15	14	11	4	0
Kirkheaton Primary School	60	29	46	14	0
Lepton CE Primary Academy	30	44	30	0	6
Rowley Lane J I & N School	60	26	60	0	6
	165	113	147	18	12

Table E(ii)

2022/23	PAN	No of applicants living in PAA	No of places allocated	Vacancies	Waiting list
Kirkheaton, Lepton & Grange Moor					
Grange Moor Primary School	15	8	13	2	0
Kirkheaton Primary School	60	38	47	13	0
Lepton CofE Primary Academy	30	35	18	12	0
Rowley Lane J I & N School	60	21	60	0	0
	165	102	138	27	0

Table E(iii)

2021/22	PAN	No of applicants living in PAA	No of places allocated	Vacancies	Waiting list
Kirkheaton, Lepton & Grange Moor					
Grange Moor Primary School	15	14	15	0	3
Kirkheaton Primary School	60	30	45	15	0
Lepton CofE Primary Academy	30	37	23	7	0
Rowley Lane J I & N School	60	23	60	0	16
	165	104	143	22	19